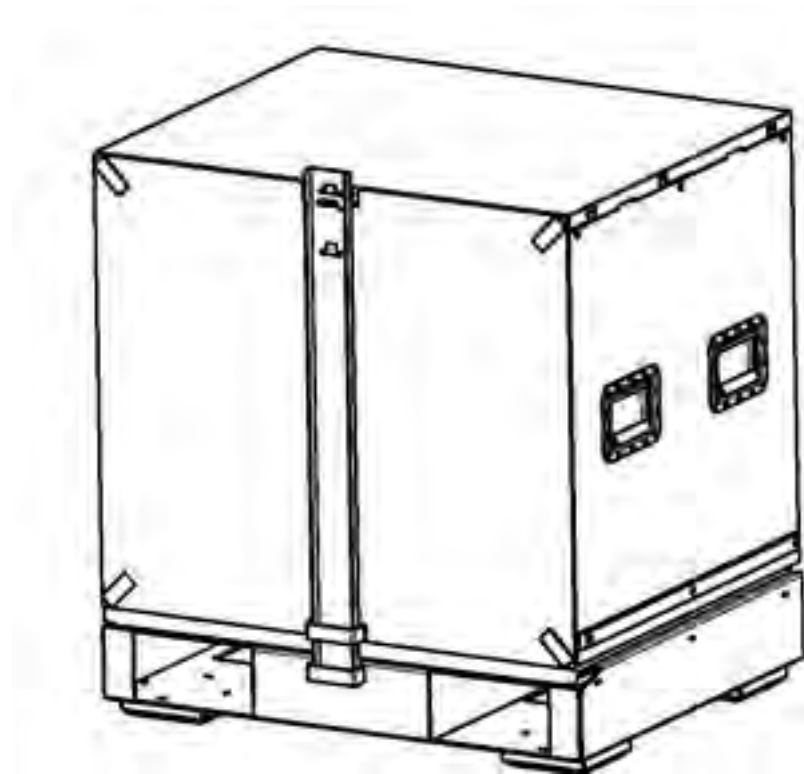

PARTS SUPPORTING INFORMATION

**FPU® SYSTEMS OPERATION MANUAL
(INCLUDING REPAIR PARTS & SPECIAL TOOL LIST)
SMALL CABINET MODULE (SCM)
BOH FPU Field Pack-up Units**

BOH FPU SCM 36" MODULE ASSEMBLIES



**SCM 36" MODULE ASSEMBLY
FIGURES 28 through 34**

BOH FPU SCM 36" MODULE CONFIGURATION #1

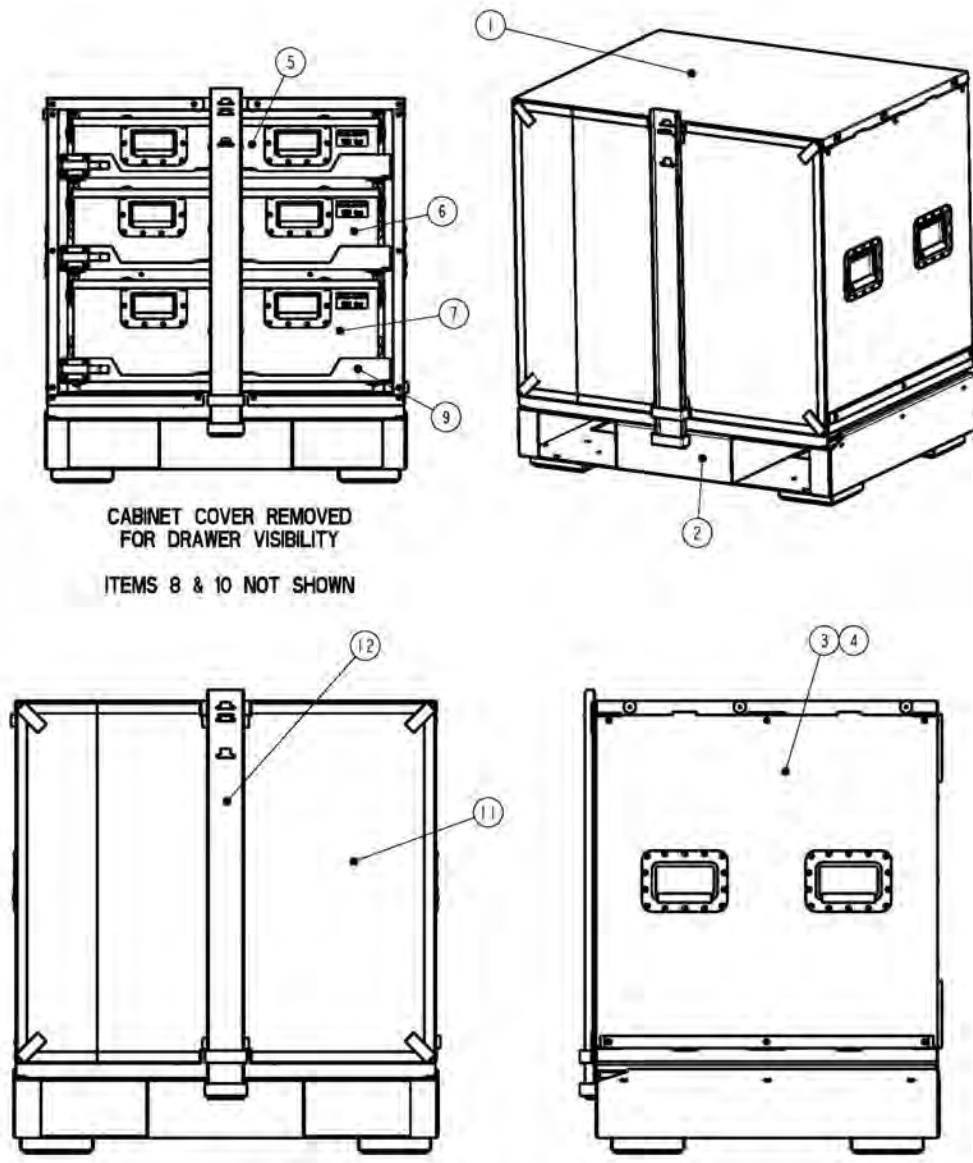


FIGURE 28 BOH FPU SCM 36" CONFIGURATION #1

**FIGURE 28 GROUP 03
SCM 36" MODULE CONFIGURATION #1**

ITEM	NSN	CAGE	PART NO.	DESCRIPTION	QTY
1	PENDING	INSG3	18100001-001	..BOH FPU SMALL CABINET MODULE, 36 CONFIG #1 - GREEN	1
2	NOT ASSIGNED	INSG3	18000100-001	..SCM BASE ASSEMBLY - GREEN	1
3	NOT ASSIGNED	INSG3	17000016-001	..30" CABINET CONFIGURATION #1A - GREEN	1
4	NOT ASSIGNED	INSG3	17000010-001	..30" HULL ASSEMBLY - GREEN	1
5	NOT ASSIGNED	INSG3	17000655-001	..DRAWER ASSEMBLY, 6" - GREEN	1
6	NOT ASSIGNED	INSG3	17000656-001	..DRAWER ASSEMBLY, 8" - GREEN	1
7	NOT ASSIGNED	INSG3	17000657-001	..DRAWER ASSEMBLY, 10" - GREEN	1
8	NOT ASSIGNED	INSG3	15980802-001	..DRAWER RETAINER KIT - GREEN	3
9	NOT ASSIGNED	INSG3	15980803-001	..DRAWER TRAY KIT - GREEN	3
10	NOT ASSIGNED	INSG3	15980804-001	..SLIDE KIT - GREEN	3
11	NOT ASSIGNED	INSG3	17000349	..SCM CABINET COVER, 30" - GREEN	1
12	NOT ASSIGNED	INSG3	17000165-001	..36 BAR ASSEMBLY, 30" LOW PRO - GREEN	1
1	PENDING	INSG3	18100001-002	..BOH FPU SMALL CABINET MODULE, 36 CONFIG #1 - TAN	1
2	NOT ASSIGNED	INSG3	18000100-002	..SCM BASE ASSEMBLY - TAN	1
3	NOT ASSIGNED	INSG3	17000016-002	..30" CABINET CONFIGURATION #1A - TAN	1
4	NOT ASSIGNED	INSG3	17000010-002	..30" HULL ASSEMBLY - TAN	1
5	NOT ASSIGNED	INSG3	17000655-002	..DRAWER ASSEMBLY, 6" - TAN	1
6	NOT ASSIGNED	INSG3	17000656-002	..DRAWER ASSEMBLY, 8" - TAN	1
7	NOT ASSIGNED	INSG3	17000657-002	..DRAWER ASSEMBLY, 10" - TAN	1
8	NOT ASSIGNED	INSG3	15980802-002	..DRAWER RETAINER KIT - TAN	3
9	NOT ASSIGNED	INSG3	15980803-002	..DRAWER TRAY KIT - TAN	3
10	NOT ASSIGNED	INSG3	15980804-002	..SLIDE KIT - TAN	3
11	NOT ASSIGNED	INSG3	17000343	..SCM CABINET COVER, 30" - TAN	1
12	NOT ASSIGNED	INSG3	17000165-002	..36 BAR ASSEMBLY, 30" LOW PRO - TAN	1

END OF FIGURE 28

BOH FPU SCM 36" MODULE CONFIGURATION #2

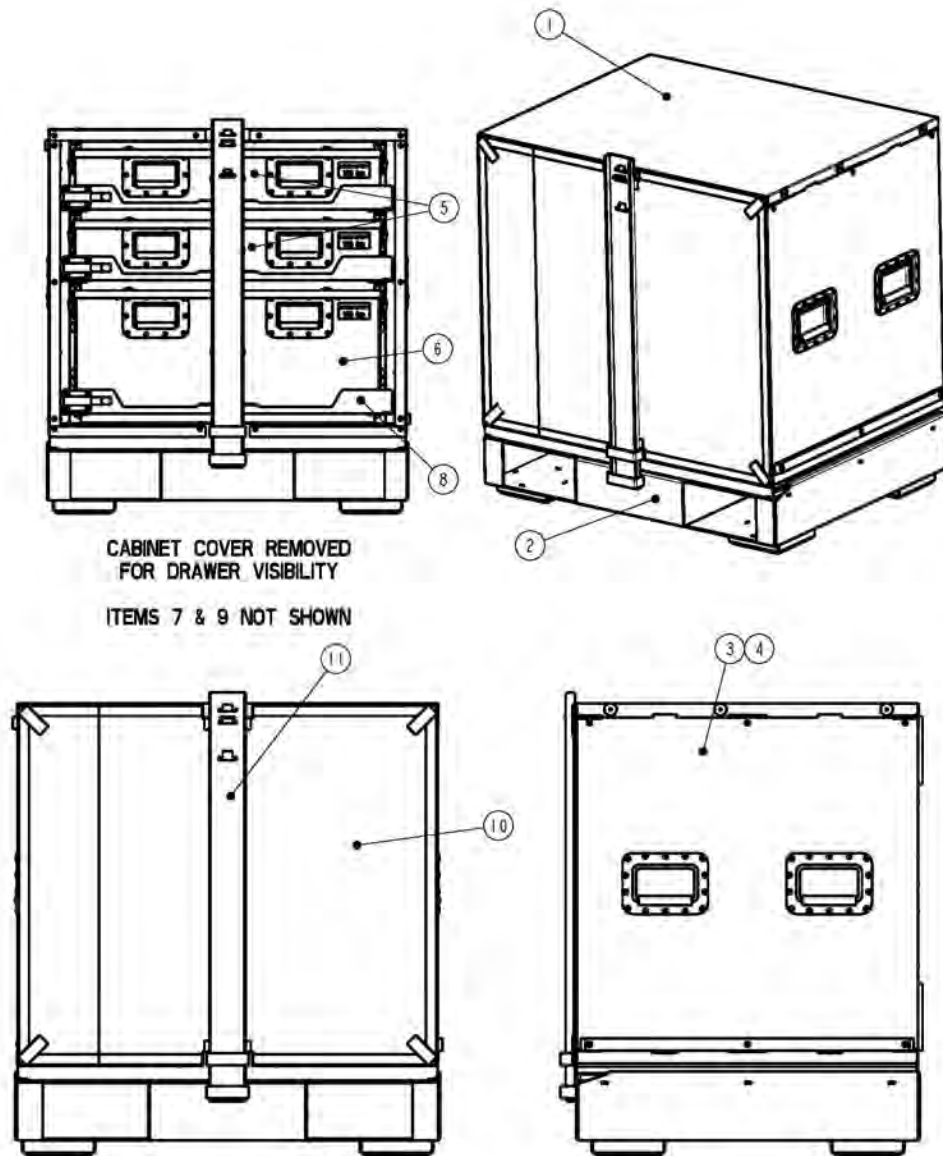


FIGURE 29 BOH FPU SCM 36" CONFIGURATION #2

**FIGURE 29 GROUP 03
SCM 36" MODULE CONFIGURATION #2**

ITEM	NSN	CAGE	PART NO.	DESCRIPTION	QTY
1	PENDING	INSG3	18100002-001	.BOH FPU SMALL CABINET MODULE, 36 CONFIG #2 - GREEN	1
2	NOT ASSIGNED	INSG3	18000100-001	..SCM BASE ASSEMBLY - GREEN	1
3	NOT ASSIGNED	INSG3	17000017-001	..30" CABINET CONFIGURATION #2A - GREEN	1
4	NOT ASSIGNED	INSG3	170000110-001	...30" HULL ASSEMBLY - GREEN	1
5	NOT ASSIGNED	INSG3	17000655-001	...DRAWER ASSEMBLY, 6" - GREEN	2
6	NOT ASSIGNED	INSG3	17000658-001	...DRAWER ASSEMBLY, 12" - GREEN	1
7	NOT ASSIGNED	INSG3	15980802-001	...DRAWER RETAINER KIT - GREEN	3
8	NOT ASSIGNED	INSG3	15980803-001	...DRAWER TRAY KIT - GREEN	3
9	NOT ASSIGNED	INSG3	15980804-001	...SLIDE KIT - GREEN	3
10	NOT ASSIGNED	INSG3	17000349	..SCM CABINET COVER, 30" - GREEN	1
11	NOT ASSIGNED	INSG3	17000165-001	..36 BAR ASSEMBLY, 30" LOW PRO - GREEN	1
1	PENDING	INSG3	18100002-002	.BOH FPU SMALL CABINET MODULE, 36 CONFIG #2 - TAN	1
2	NOT ASSIGNED	INSG3	18000100-002	..SCM BASE ASSEMBLY - TAN	1
3	NOT ASSIGNED	INSG3	17000017-002	..30" CABINET CONFIGURATION #2A - TAN	1
4	NOT ASSIGNED	INSG3	170000110-002	...30" HULL ASSEMBLY - TAN	1
5	NOT ASSIGNED	INSG3	17000655-002	...DRAWER ASSEMBLY, 6" - TAN	2
6	NOT ASSIGNED	INSG3	17000658-002	...DRAWER ASSEMBLY, 12" - TAN	1
7	NOT ASSIGNED	INSG3	15980802-002	...DRAWER RETAINER KIT - TAN	3
8	NOT ASSIGNED	INSG3	15980803-002	...DRAWER TRAY KIT - TAN	3
9	NOT ASSIGNED	INSG3	15980804-002	...SLIDE KIT - TAN	3
10	NOT ASSIGNED	INSG3	17000343	..SCM CABINET COVER, 30" - TAN	1
11	NOT ASSIGNED	INSG3	17000165-002	..36 BAR ASSEMBLY, 30" LOW PRO - TAN	1

END OF FIGURE 29

BOH FPU SCM 36" MODULE CONFIGURATION #3

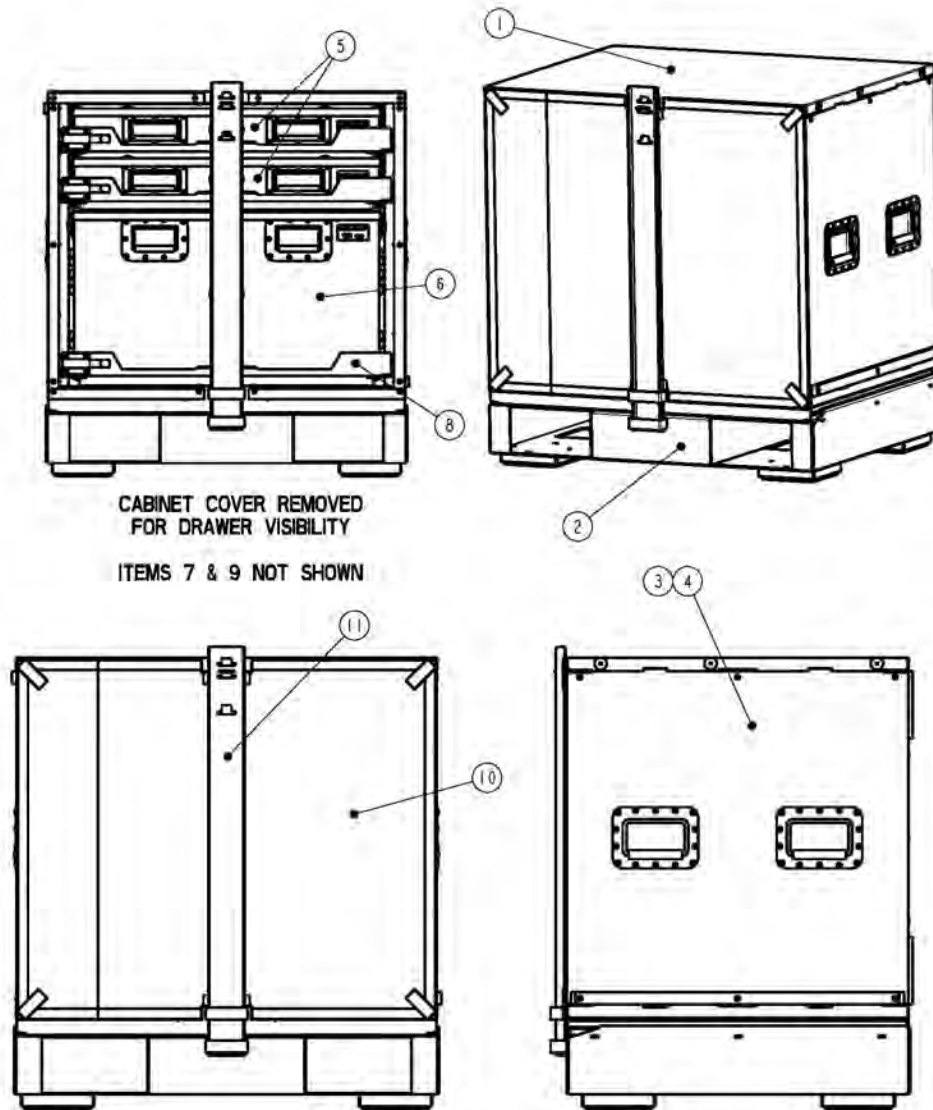


FIGURE 30 BOH FPU SCM 36" CONFIGURATION #3

**FIGURE 30 GROUP 03
SCM 36" MODULE CONFIGURATION #3**

ITEM	NSN	CAGE	PART NO.	DESCRIPTION	QTY
1	PENDING	INSG3	18100003-001	.BOH FPU SMALL CABINET MODULE, 36 CONFIG #3 - GREEN	1
2	NOT ASSIGNED	INSG3	18000100-001	..SCM BASE ASSEMBLY - GREEN	1
3	NOT ASSIGNED	INSG3	17000018-001	..30" CABINET CONFIGURATION #3A - GREEN	1
4	NOT ASSIGNED	INSG3	170000110-001	...30" HULL ASSEMBLY - GREEN	1
5	NOT ASSIGNED	INSG3	17000654-001	...DRAWER ASSEMBLY, 4" - GREEN	2
6	NOT ASSIGNED	INSG3	17000659-001	...DRAWER ASSEMBLY, 16" - GREEN	1
7	NOT ASSIGNED	INSG3	15980802-001	...DRAWER RETAINER KIT - GREEN	3
8	NOT ASSIGNED	INSG3	15980803-001	...DRAWER TRAY KIT - GREEN	3
9	NOT ASSIGNED	INSG3	15980804-001	...SLIDE KIT - GREEN	3
10	NOT ASSIGNED	INSG3	17000349	..SCM CABINET COVER, 30" - GREEN	1
11	NOT ASSIGNED	INSG3	17000165-001	..3G BAR ASSEMBLY, 30" LOW PRO - GREEN	1
1	PENDING	INSG3	18100003-002	.BOH FPU SMALL CABINET MODULE, 36 CONFIG #3 - TAN	1
2	NOT ASSIGNED	INSG3	18000100-002	..SCM BASE ASSEMBLY - TAN	1
3	NOT ASSIGNED	INSG3	17000018-002	..30" CABINET CONFIGURATION #3A - TAN	1
4	NOT ASSIGNED	INSG3	170000110-002	...30" HULL ASSEMBLY - TAN	1
5	NOT ASSIGNED	INSG3	17000654-002	...DRAWER ASSEMBLY, 4" - TAN	2
6	NOT ASSIGNED	INSG3	17000659-002	...DRAWER ASSEMBLY, 16" - TAN	1
7	NOT ASSIGNED	INSG3	15980802-002	...DRAWER RETAINER KIT - TAN	3
8	NOT ASSIGNED	INSG3	15980803-002	...DRAWER TRAY KIT - TAN	3
9	NOT ASSIGNED	INSG3	15980804-002	...SLIDE KIT - TAN	3
10	NOT ASSIGNED	INSG3	17000343	..SCM CABINET COVER, 30" - TAN	1
11	NOT ASSIGNED	INSG3	17000165-002	..3G BAR ASSEMBLY, 30" LOW PRO - TAN	1

END OF FIGURE 30

BOH FPU SCM 36" MODULE CONFIGURATION #4

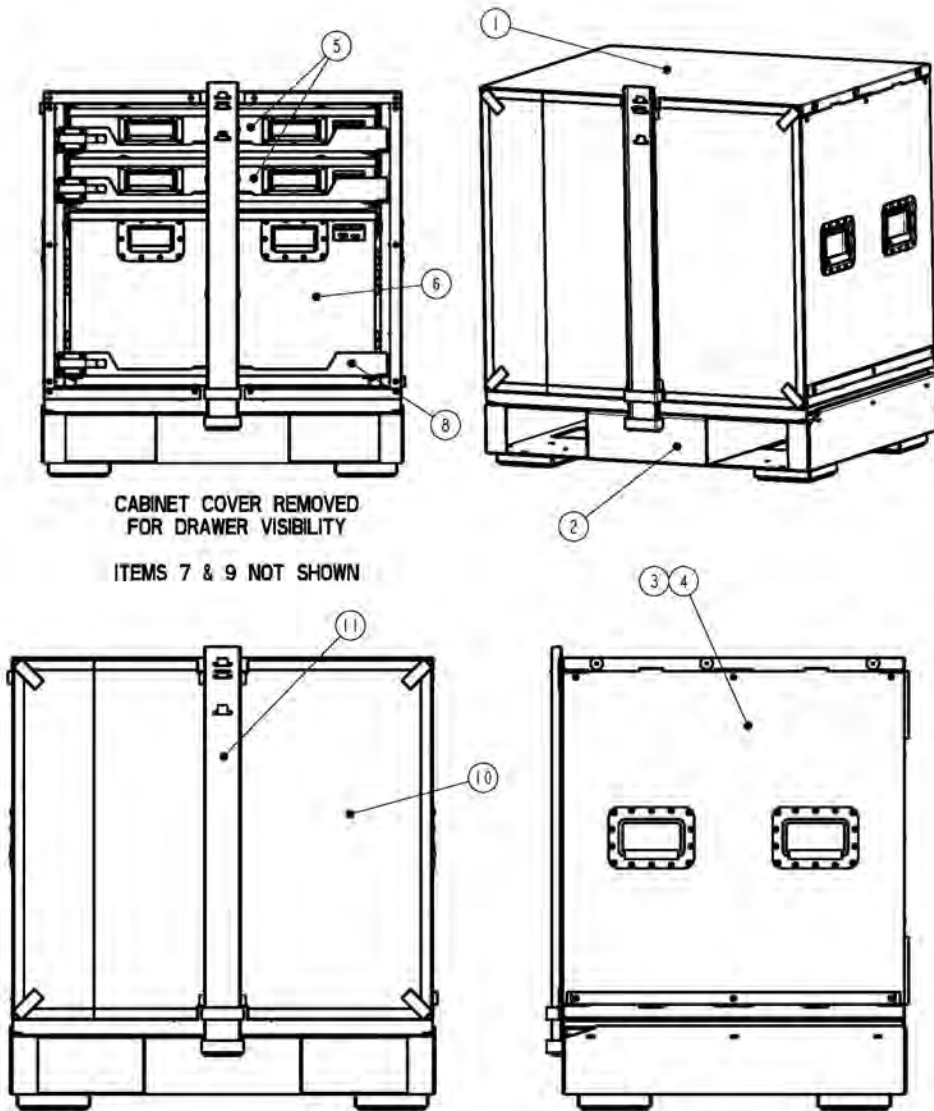


FIGURE 31 BOH FPU SCM 36" MODULE CONFIGURATION #4

**FIGURE 31 GROUP 03
SCM 36" MODULE CONFIGURATION #4**

ITEM	NSN	CAGE	PART NO.	DESCRIPTION	QTY
1	PENDING	INSG3	18100004-001	.BOH FPU SMALL CABINET MODULE, 36 CONFIG #4 - GREEN	1
2	NOT ASSIGNED	INSG3	18000100-001	..SCM BASE ASSEMBLY - GREEN	1
3	NOT ASSIGNED	INSG3	17000019-001	..30" CABINET CONFIGURATION #4A - GREEN	1
4	NOT ASSIGNED	INSG3	170000110-001	...30" HULL ASSEMBLY - GREEN	1
5	NOT ASSIGNED	INSG3	17000654-001	...DRAWER ASSEMBLY, 4" - GREEN	1
6	NOT ASSIGNED	INSG3	17000656-001	...DRAWER ASSEMBLY, 8" - GREEN	1
7	NOT ASSIGNED	INSG3	17000658-001	...DRAWER ASSEMBLY, 12" - GREEN	1
8	NOT ASSIGNED	INSG3	15980802-001	...DRAWER RETAINER KIT - GREEN	3
9	NOT ASSIGNED	INSG3	15980803-001	...DRAWER TRAY KIT - GREEN	3
10	NOT ASSIGNED	INSG3	15980804-001	...SLIDE KIT - GREEN	3
11	NOT ASSIGNED	INSG3	17000349	..SCM CABINET COVER, 30" - GREEN	1
12	NOT ASSIGNED	INSG3	17000165-001	..3G BAR ASSEMBLY, 30" LOW PRO - GREEN	1
1	PENDING	INSG3	18100004-002	.BOH FPU SMALL CABINET MODULE, 36 CONFIG #4 - TAN	1
2	NOT ASSIGNED	INSG3	18000100-002	..SCM BASE ASSEMBLY - TAN	1
3	NOT ASSIGNED	INSG3	17000019-002	..30" CABINET CONFIGURATION #4A - TAN	1
4	NOT ASSIGNED	INSG3	170000110-002	...30" HULL ASSEMBLY - TAN	1
5	NOT ASSIGNED	INSG3	17000654-002	...DRAWER ASSEMBLY, 4" - TAN	1
6	NOT ASSIGNED	INSG3	17000656-002	...DRAWER ASSEMBLY, 8" - TAN	1
7	NOT ASSIGNED	INSG3	17000658-002	...DRAWER ASSEMBLY, 12" - TAN	1
8	NOT ASSIGNED	INSG3	15980802-002	...DRAWER RETAINER KIT - TAN	3
9	NOT ASSIGNED	INSG3	15980803-002	...DRAWER TRAY KIT - TAN	3
10	NOT ASSIGNED	INSG3	15980804-002	...SLIDE KIT - TAN	3
11	NOT ASSIGNED	INSG3	17000343	..SCM CABINET COVER, 30" - TAN	1
12	NOT ASSIGNED	INSG3	17000165-002	..3G BAR ASSEMBLY, 30" LOW PRO - TAN	1

END OF FIGURE 31

BOH FPU SCM 36" MODULE CONFIGURATION #5

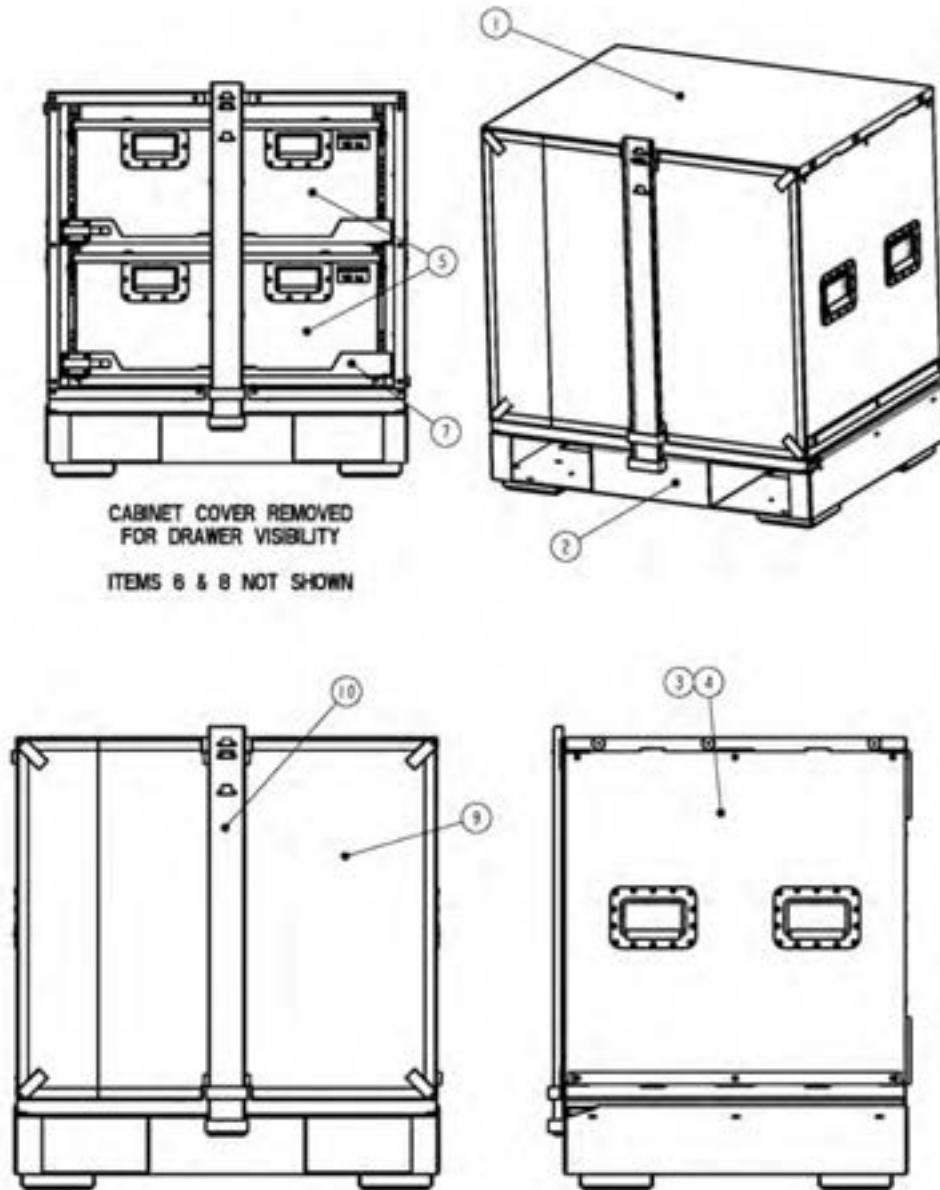


FIGURE 32 BOH FPU SCM 36" CONFIGURATION #5

**FIGURE 32 GROUP 03
SCM 36" MODULE CONFIGURATION #5**

ITEM	NSN	CAGE	PART NO.	DESCRIPTION	QTY
1	PENDING	INSG3	18100005-001	.BOH FPU SMALL CABINET MODULE, 36 CONFIG #5 - GREEN	1
2	NOT ASSIGNED	INSG3	18000100-001	..SCM BASE ASSEMBLY - GREEN	1
3	NOT ASSIGNED	INSG3	17000020-001	..30" CABINET CONFIGURATION #5A - GREEN	1
4	NOT ASSIGNED	INSG3	17000010-001	...30" HULL ASSEMBLY - GREEN	1
5	NOT ASSIGNED	INSG3	17000658-001	...DRAWER ASSEMBLY, 12" - GREEN	2
6	NOT ASSIGNED	INSG3	15980802-001	...DRAWER RETAINER KIT - GREEN	2
7	NOT ASSIGNED	INSG3	15980803-001	...DRAWER TRAY KIT - GREEN	2
8	NOT ASSIGNED	INSG3	15980804-001	...SLIDE KIT - GREEN	2
9	NOT ASSIGNED	INSG3	17000349	..SCM CABINET COVER, 30" - GREEN	1
10	NOT ASSIGNED	INSG3	17000165-001	..3G BAR ASSEMBLY, 30" LOW PRO - GREEN	1
1	PENDING	INSG3	18100005-002	.BOH FPU SMALL CABINET MODULE, 36 CONFIG #5 - TAN	1
2	NOT ASSIGNED	INSG3	18000100-002	..SCM BASE ASSEMBLY - TAN	1
3	NOT ASSIGNED	INSG3	17000020-002	..30" CABINET CONFIGURATION #5A - TAN	1
4	NOT ASSIGNED	INSG3	17000010-002	...30" HULL ASSEMBLY - TAN	1
5	NOT ASSIGNED	INSG3	17000658-002	...DRAWER ASSEMBLY, 12" - TAN	2
6	NOT ASSIGNED	INSG3	15980802-002	...DRAWER RETAINER KIT - TAN	2
7	NOT ASSIGNED	INSG3	15980803-002	...DRAWER TRAY KIT - TAN	2
8	NOT ASSIGNED	INSG3	15980804-002	...SLIDE KIT - TAN	2
9	NOT ASSIGNED	INSG3	17000343	..SCM CABINET COVER, 30" - TAN	1
10	NOT ASSIGNED	INSG3	17000165-002	..3G BAR ASSEMBLY, 30" LOW PRO - TAN	1

END OF FIGURE 32

BOH FPU SCM 36" MODULE CONFIGURATION #6

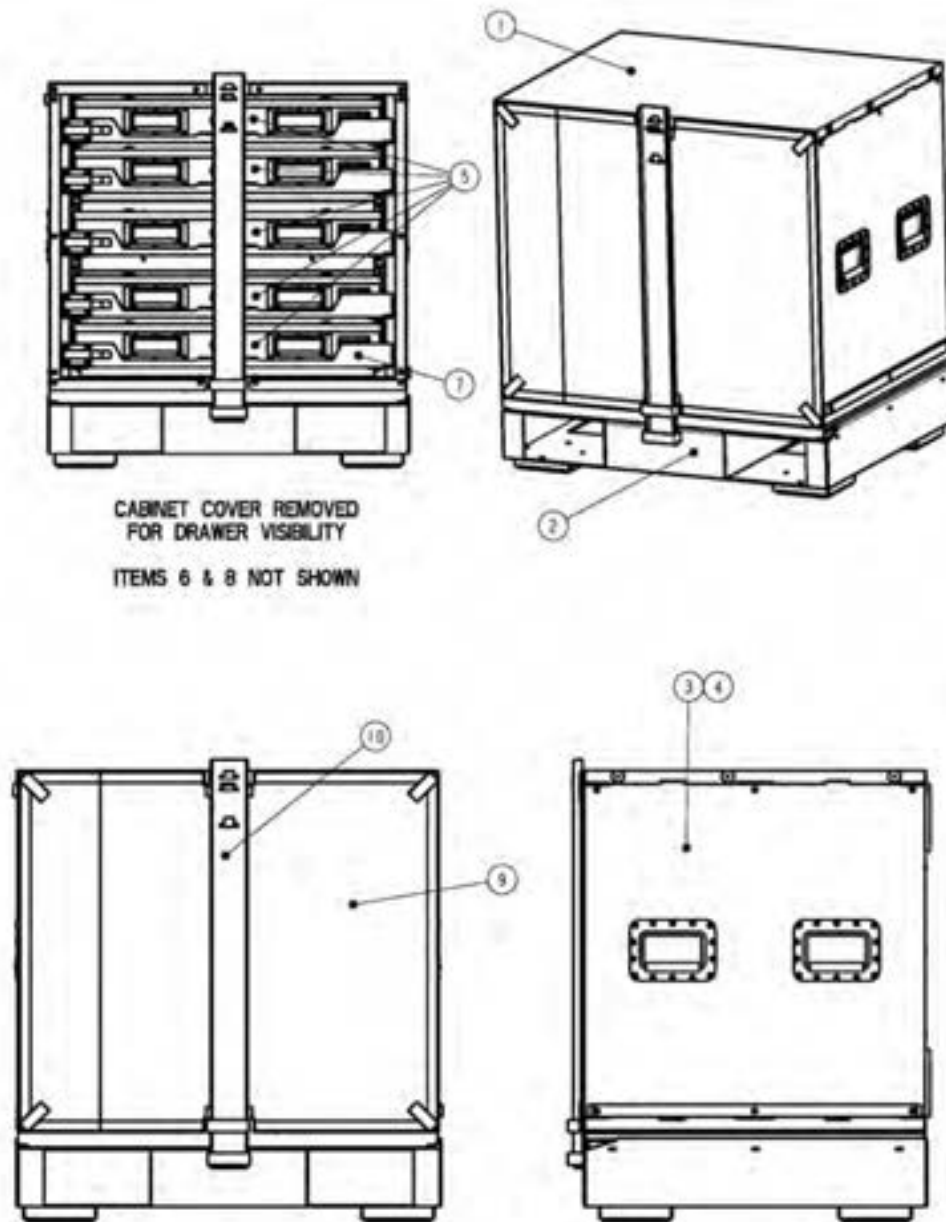


FIGURE 33 BOH FPU SCM 36" MODULE CONFIGURATION #6

**FIGURE 33 GROUP 03
SCM 36" MODULE CONFIGURATION #6**

ITEM	NSN	CAGE	PART NO.	DESCRIPTION	QTY
1	PENDING	INSG3	18100006-001	.BOH FPU SMALL CABINET MODULE, 36 CONFIG #6 - GREEN	1
2	NOT ASSIGNED	INSG3	18000100-001	..SCM BASE ASSEMBLY - GREEN	1
3	NOT ASSIGNED	INSG3	18000020-001	..30" CABINET CONFIGURATION #6A - GREEN	1
4	NOT ASSIGNED	INSG3	170000110-001	...30" HULL ASSEMBLY - GREEN	1
5	NOT ASSIGNED	INSG3	17000654-001	...DRAWER ASSEMBLY, 4" - GREEN	5
6	NOT ASSIGNED	INSG3	15980802-001	...DRAWER RETAINER KIT - GREEN	5
7	NOT ASSIGNED	INSG3	15980803-001	...DRAWER TRAY KIT - GREEN	5
8	NOT ASSIGNED	INSG3	15980804-001	...SLIDE KIT - GREEN	5
9	NOT ASSIGNED	INSG3	17000349	..SCM CABINET COVER, 30" - GREEN	1
10	NOT ASSIGNED	INSG3	17000165-001	..3G BAR ASSEMBLY, 30" LOW PRO - GREEN	1
1	PENDING	INSG3	18100006-002	.BOH FPU SMALL CABINET MODULE, 36 CONFIG #6 - TAN	1
2	NOT ASSIGNED	INSG3	18000100-002	..SCM BASE ASSEMBLY - TAN	1
3	NOT ASSIGNED	INSG3	18000020-002	..30" CABINET CONFIGURATION #6A - TAN	1
4	NOT ASSIGNED	INSG3	170000110-002	...30" HULL ASSEMBLY - TAN	1
5	NOT ASSIGNED	INSG3	17000654-002	...DRAWER ASSEMBLY, 4" - TAN	5
6	NOT ASSIGNED	INSG3	15980802-002	...DRAWER RETAINER KIT - TAN	5
7	NOT ASSIGNED	INSG3	15980803-002	...DRAWER TRAY KIT - TAN	5
8	NOT ASSIGNED	INSG3	15980804-002	...SLIDE KIT - TAN	5
9	NOT ASSIGNED	INSG3	17000343	..SCM CABINET COVER, 30" - TAN	1
10	NOT ASSIGNED	INSG3	17000165-002	..3G BAR ASSEMBLY, 30" LOW PRO - TAN	1

END OF FIGURE 33

BOH FPU SCM 36" MODULE CONFIGURATION #7

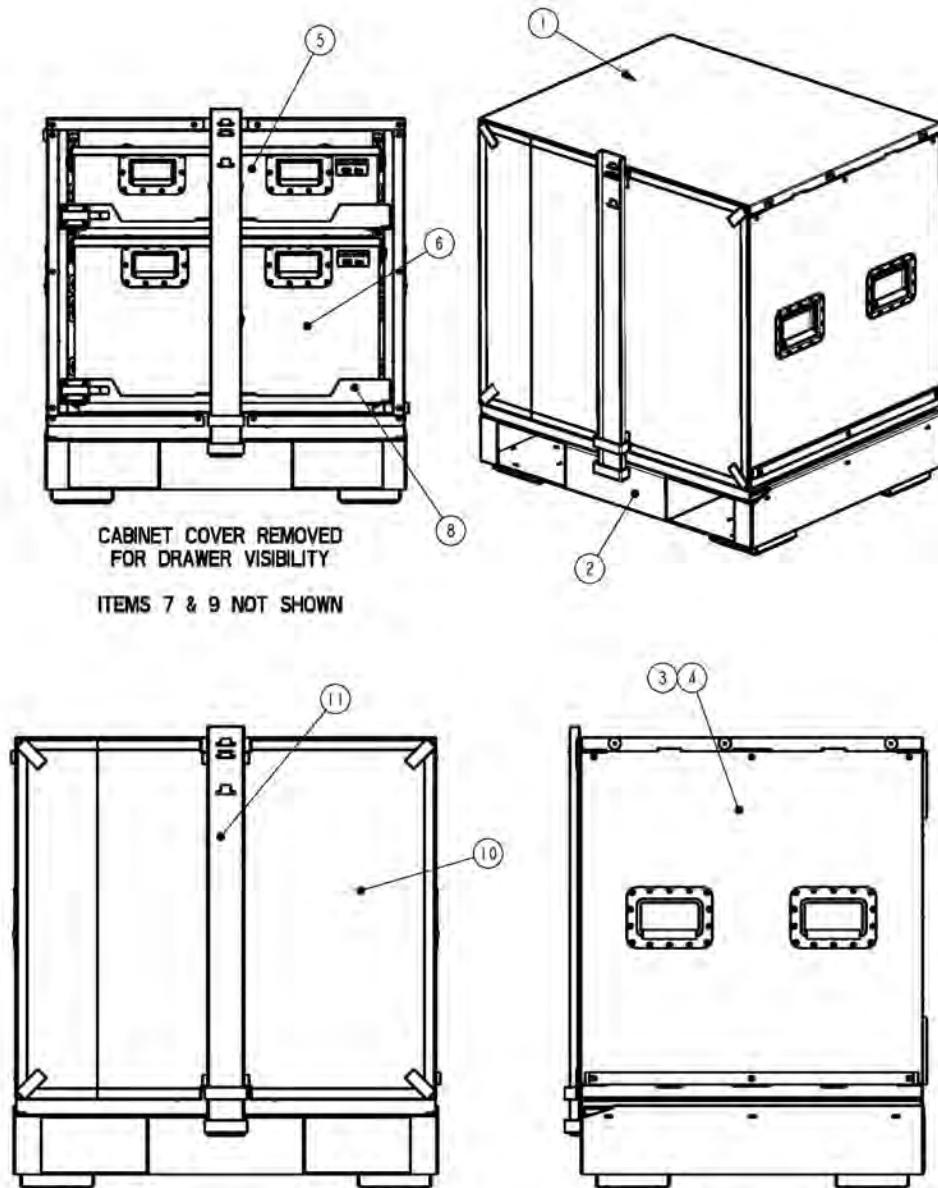


FIGURE 34 BOH FPU SCM 36" MODULE CONFIGURATION #7

**FIGURE 34 GROUP 03
SCM 36" MODULE CONFIGURATION #7**

ITEM	NSN	CAGE	PART NO.	DESCRIPTION	QTY
1	PENDING	INSG3	18100007-001	BOH FPU SMALL CABINET MODULE, 36 CONFIG #7 - GREEN	1
2	NOT ASSIGNED	INSG3	18000100-001	...SCM BASE ASSEMBLY - GREEN	1
3	NOT ASSIGNED	INSG3	18000021-001	...30" CABINET CONFIGURATION #7A - GREEN	1
4	NOT ASSIGNED	INSG3	170000110-001	...30" HULL ASSEMBLY - GREEN	1
5	NOT ASSIGNED	INSG3	17000656-001	...DRAWER ASSEMBLY, 8" - GREEN	1
6	NOT ASSIGNED	INSG3	17000659-001	...DRAWER ASSEMBLY, 16" - GREEN	1
7	NOT ASSIGNED	INSG3	15980802-001	...DRAWER RETAINER KIT - GREEN	2
8	NOT ASSIGNED	INSG3	15980803-001	...DRAWER TRAY KIT - GREEN	2
9	NOT ASSIGNED	INSG3	15980804-001	...SLIDE KIT - GREEN	2
10	NOT ASSIGNED	INSG3	17000349	...SCM CABINET COVER, 30" - GREEN	1
11	NOT ASSIGNED	INSG3	17000165-001	...3G BAR ASSEMBLY, 30" LOW PRO - GREEN	1
1	PENDING	INSG3	18100007-002	BOH FPU SMALL CABINET MODULE, 36 CONFIG #7 - TAN	1
2	NOT ASSIGNED	INSG3	18000100-002	...SCM BASE ASSEMBLY - TAN	1
3	NOT ASSIGNED	INSG3	18000021-002	...30" CABINET CONFIGURATION #7A - TAN	1
4	NOT ASSIGNED	INSG3	170000110-002	...30" HULL ASSEMBLY - TAN	1
5	NOT ASSIGNED	INSG3	17000656-002	...DRAWER ASSEMBLY, 8" - TAN	1
6	NOT ASSIGNED	INSG3	17000659-002	...DRAWER ASSEMBLY, 16" - TAN	1
7	NOT ASSIGNED	INSG3	15980802-002	...DRAWER RETAINER KIT - TAN	2
8	NOT ASSIGNED	INSG3	15980803-002	...DRAWER TRAY KIT - TAN	2
9	NOT ASSIGNED	INSG3	15980804-002	...SLIDE KIT - TAN	2
10	NOT ASSIGNED	INSG3	17000343	...SCM CABINET COVER, 30" - TAN	1
11	NOT ASSIGNED	INSG3	17000165-002	...3G BAR ASSEMBLY, 30" LOW PRO - TAN	1

END OF FIGURE 34

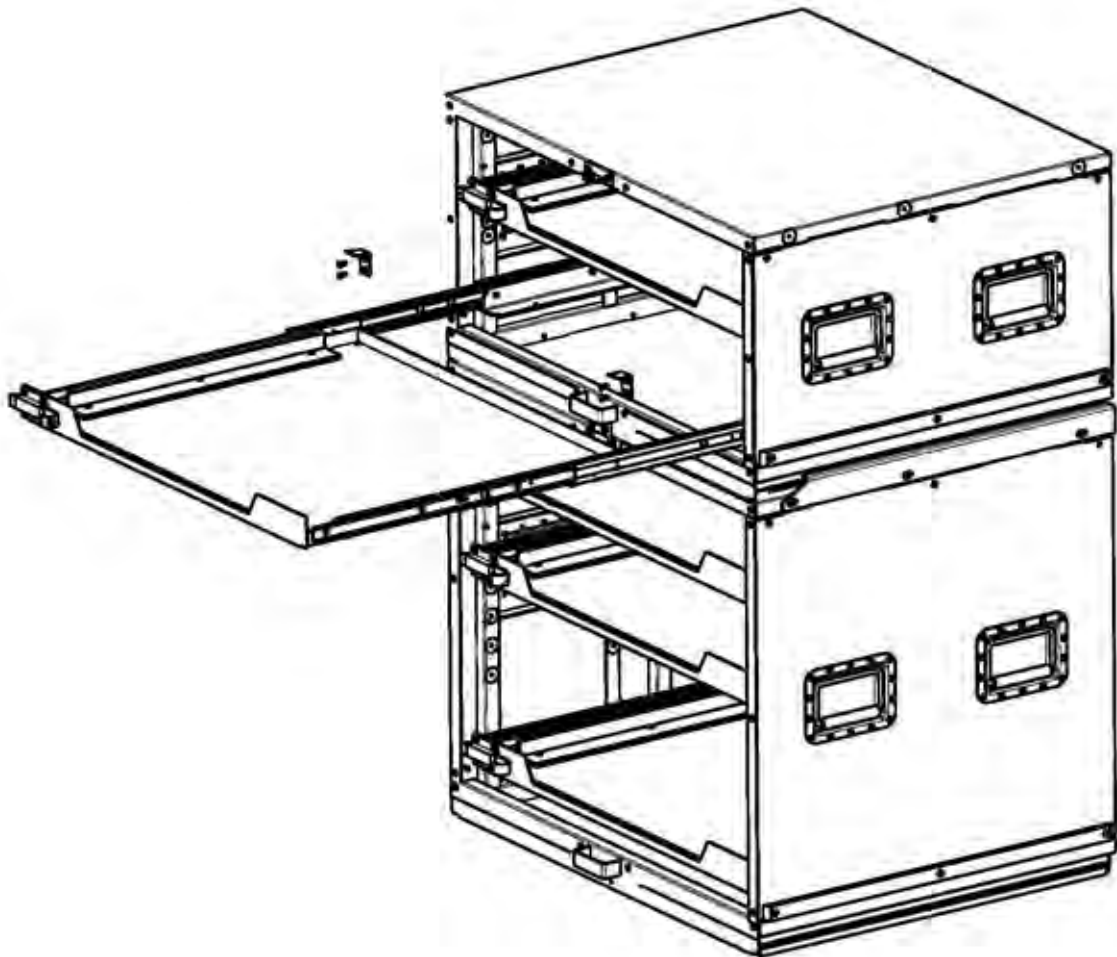
END OF WORK PACKAGE

This page was intentionally left blank

PARTS SUPPORTING INFORMATION

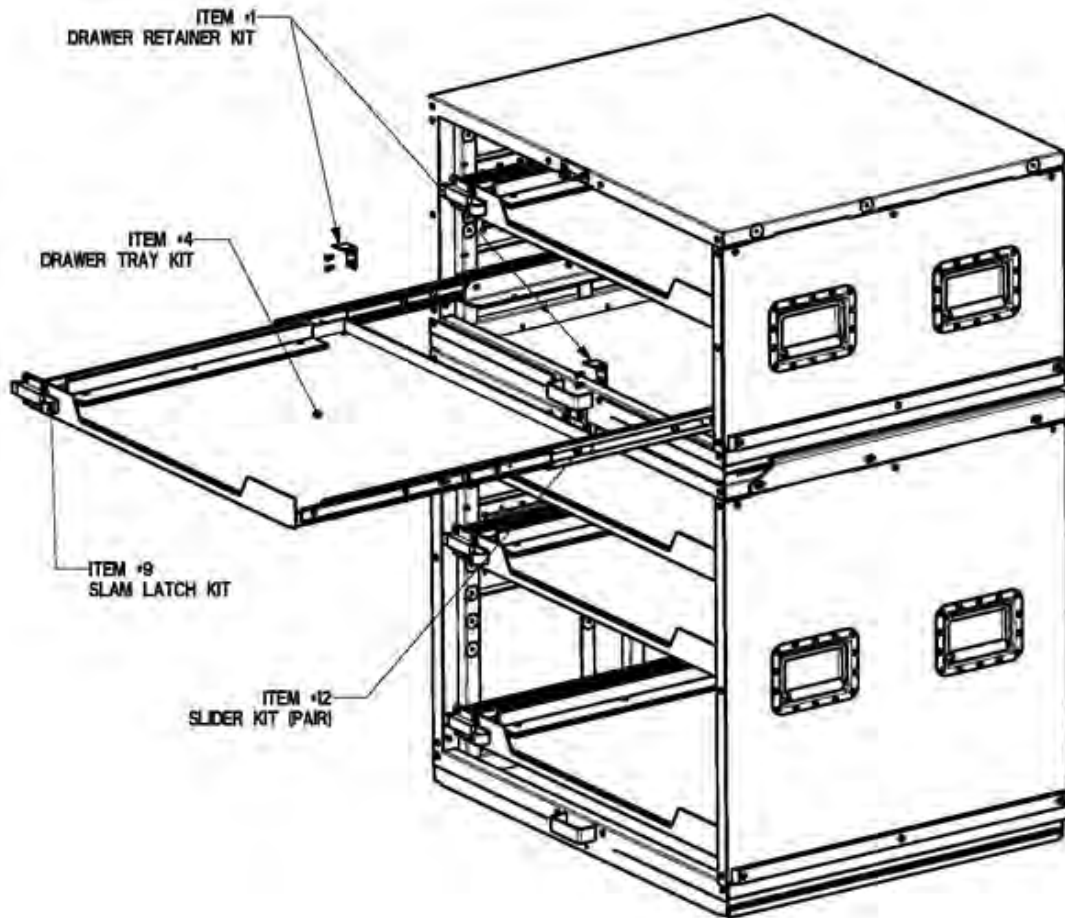
**FPU® SYSTEMS OPERATION MANUAL
(INCLUDING REPAIR PARTS & SPECIAL TOOL LIST)
SMALL CABINET MODULE (SCM)
BOH FPU Field Pack-up Units**

BOH FPU SCM HULL ASSEMBLIES



**SCM 18" and 30" HULL ASSEMBLIES
FIGURES 35a, 35b and 35c**

SCM HULL ASSEMBLIES



NOTE:
DRAWERS REMOVED FOR CLARITY.
DETAILED KIT INFO ON NEXT PAGE.

FIGURE 35a SCM HULL ASSEMBLIES

SCM TRAY AND DRAWER RETAINER

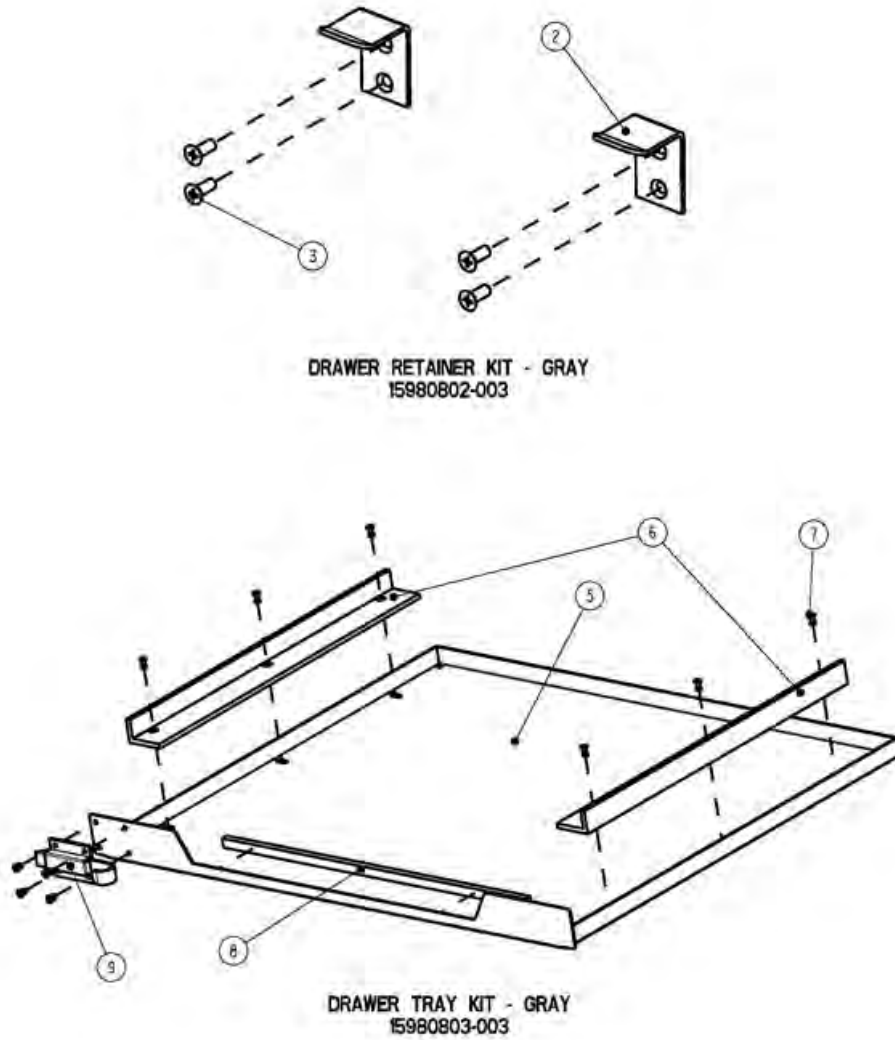


FIGURE 35b SCM TRAY AND DRAWER RETAINER

SCM SLAM LATCHES AND SLIDES

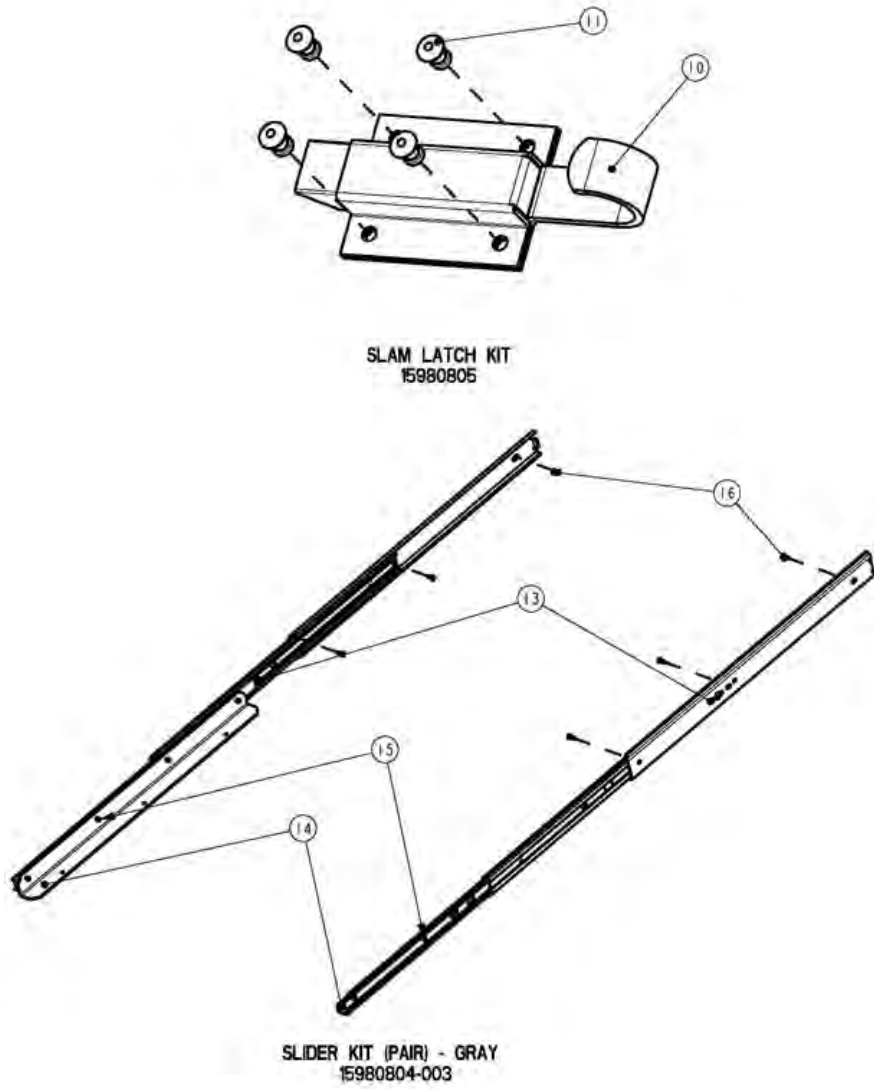


FIGURE 35c SCM SLAM LATCHES AND SLIDES

**FIGURE 35a, 35b and 35c GROUP 04
SCM HULL ASSEMBLIES**

ITEM	NSN	CAGE	PART NO.	DESCRIPTION	QTY
1	NOT ASSIGNED	INSG3	15980802	.DRAWER RETAINER KIT	1
2	NOT ASSIGNED	INSG3	NOT ASSIGNED	..L BRACKET	2
3	NOT ASSIGNED	INSG3	NOT ASSIGNED	..10-32 X 1/2" 1g MACHINE SCREW	4
4	NOT ASSIGNED	INSG3	15980803	.DRAWER TRAY KIT	1
5	NOT ASSIGNED	INSG3	NOT ASSIGNED	..DRAWER TRAY	1
6	NOT ASSIGNED	INSG3	NOT ASSIGNED	..PLASTIC TRAY SLIDER	2
7	NOT ASSIGNED	INSG3	NOT ASSIGNED	..3/16" RIVET SB66	6
8	NOT ASSIGNED	INSG3	NOT ASSIGNED	..NEOPRENE TRAY GUARD STRIP	1
9	NOT ASSIGNED	INSG3	15980805	..SLAM LATCH KIT	1
10	NOT ASSIGNED	INSG3	NOT ASSIGNED	...FINGER PULL SLAM LATCH	1
11	NOT ASSIGNED	INSG3	NOT ASSIGNED	...3/16" RIVET	4
12	NOT ASSIGNED	INSG3	15980804	.SLIDE KIT	1
13	NOT ASSIGNED	INSG3	NOT ASSIGNED	..SLIDE PAIR, LEFT AND RIGHT	1
14	NOT ASSIGNED	INSG3	NOT ASSIGNED	..SLIDE SUPPORT ANGLE	2
15	NOT ASSIGNED	INSG3	NOT ASSIGNED	...RIVET, SC64 COUNTERSUNK	2
16	NOT ASSIGNED	INSG3	NOT ASSIGNED	...1/4-20 X 5/8" PH SCREW	6

END OF FIGURE 35a, 35b and 35c

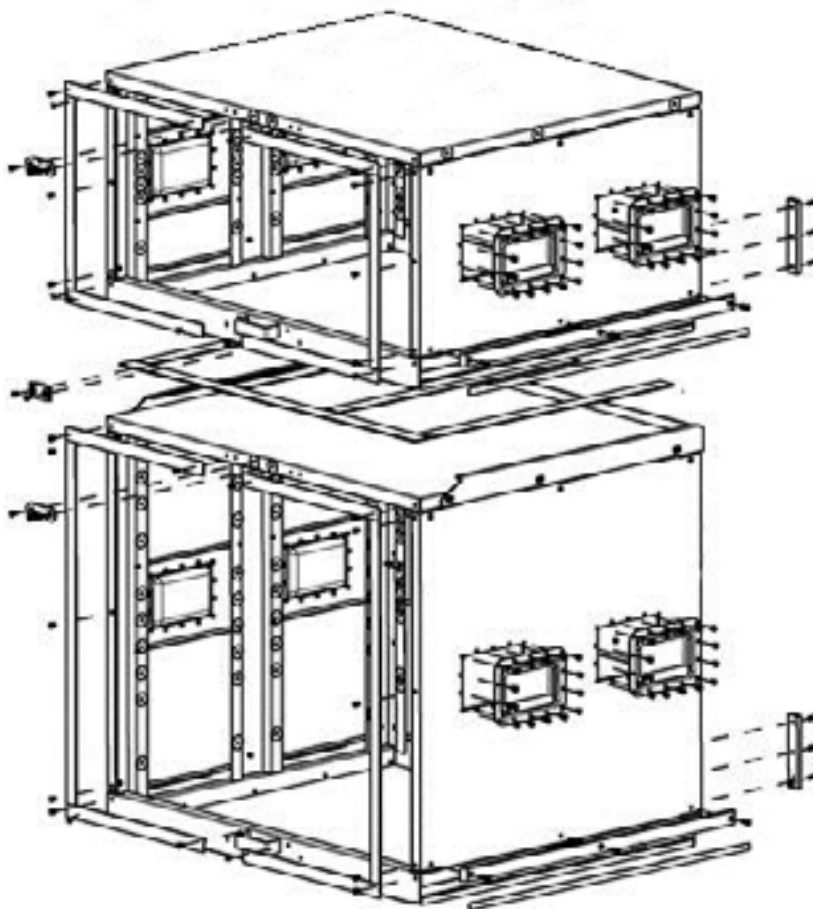
END OF WORK PACKAGE

This page was intentionally left blank

PARTS SUPPORTING INFORMATION

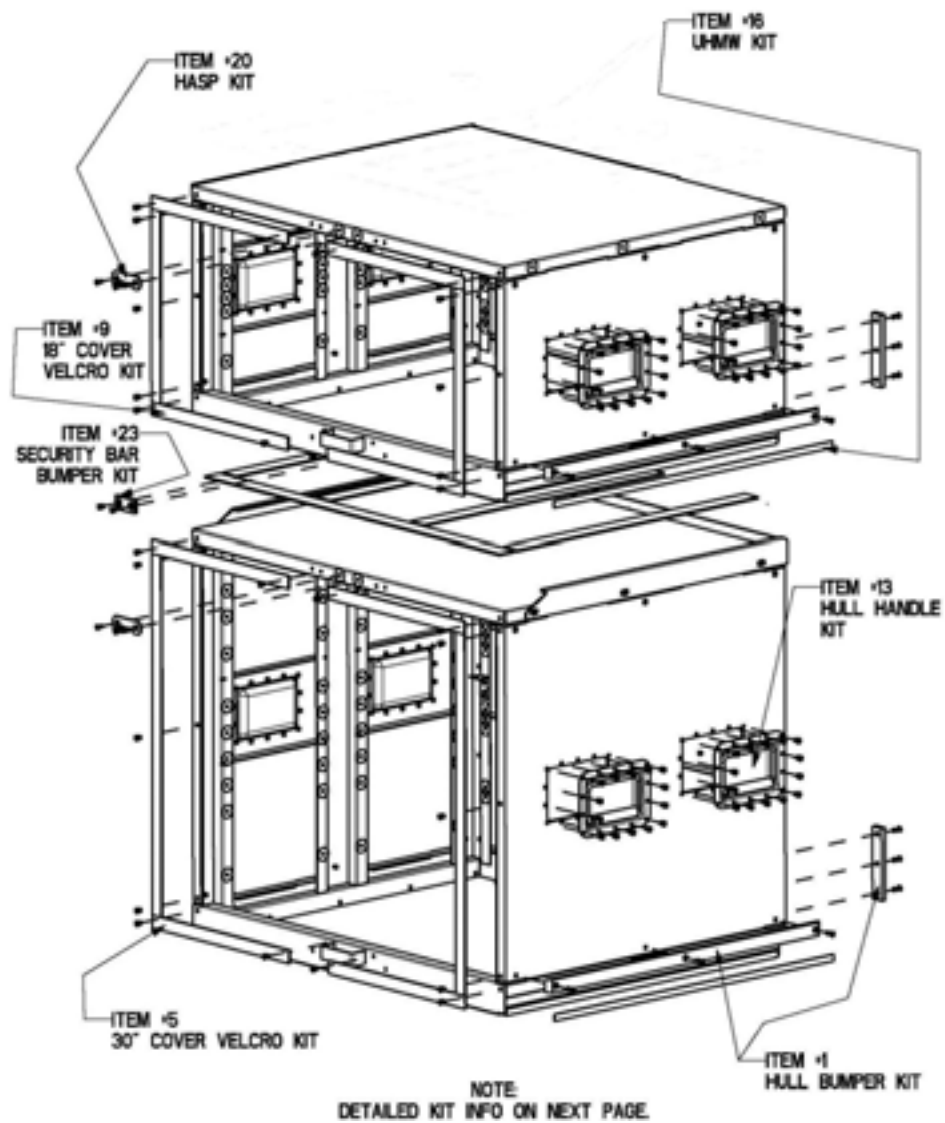
FPU® SYSTEMS OPERATION MANUAL
(INCLUDING REPAIR PARTS & SPECIAL TOOL LIST)
SMALL CABINET MODULE (SCM)
BOH FPU Field Pack-up Units

BOH FPU SCM HULL ACCESSORIES



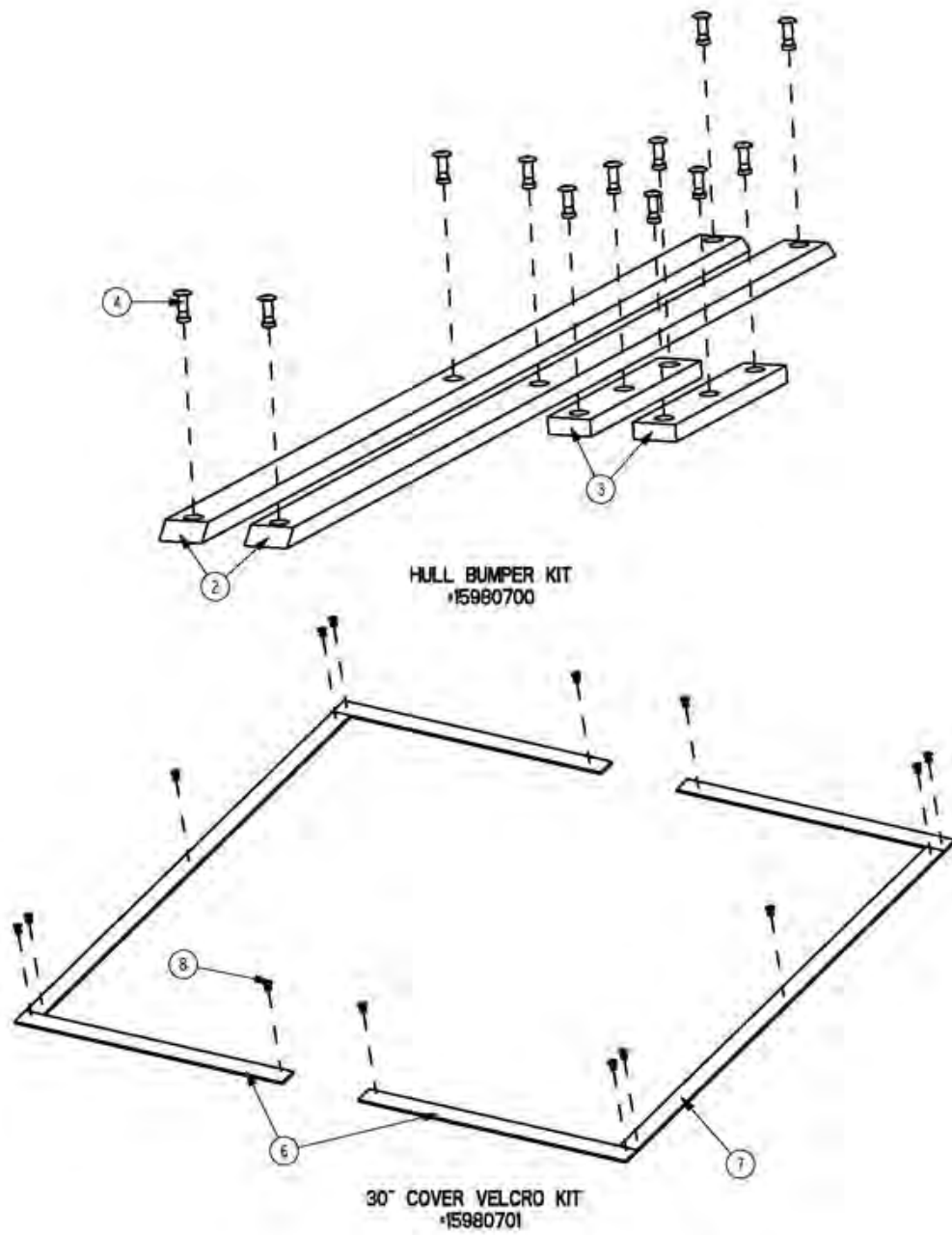
SCM HULL ACCESSORIES
FIGURES 36a, 36b, 36c, 36d and 36e

SCM HULL ACCESSORIES



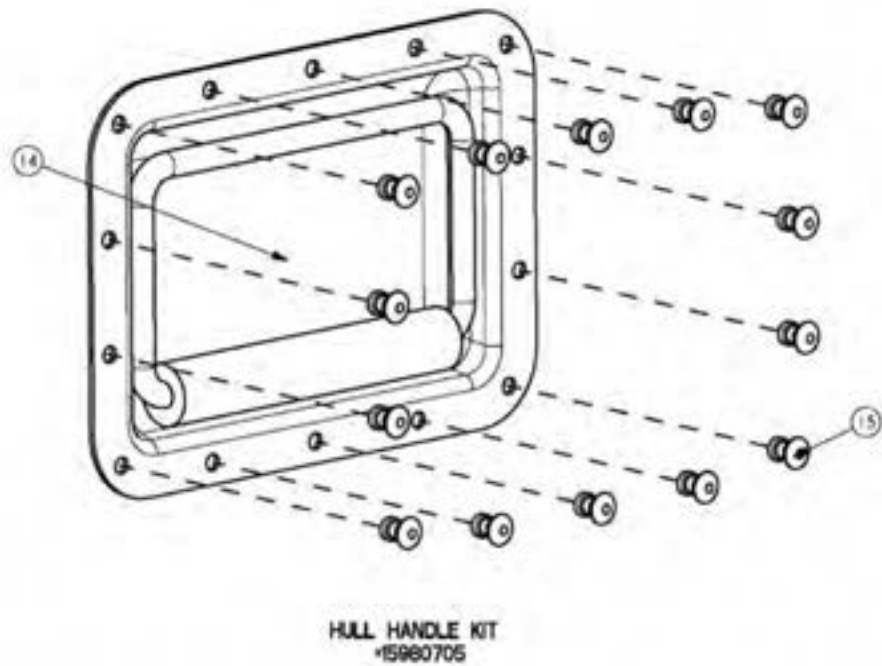
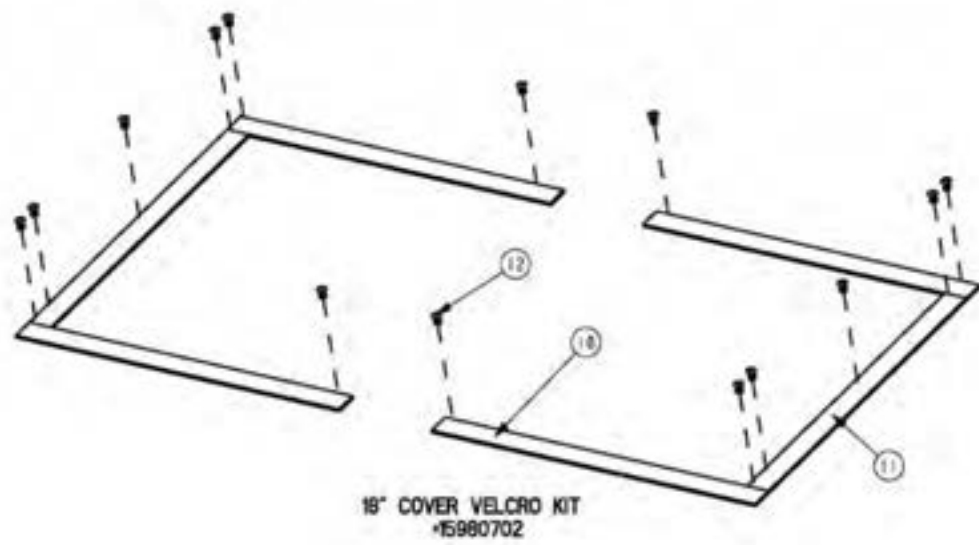
FIGURES 36a SCM HULL ACCESSORIES

SCM HULL ACCESSORIES



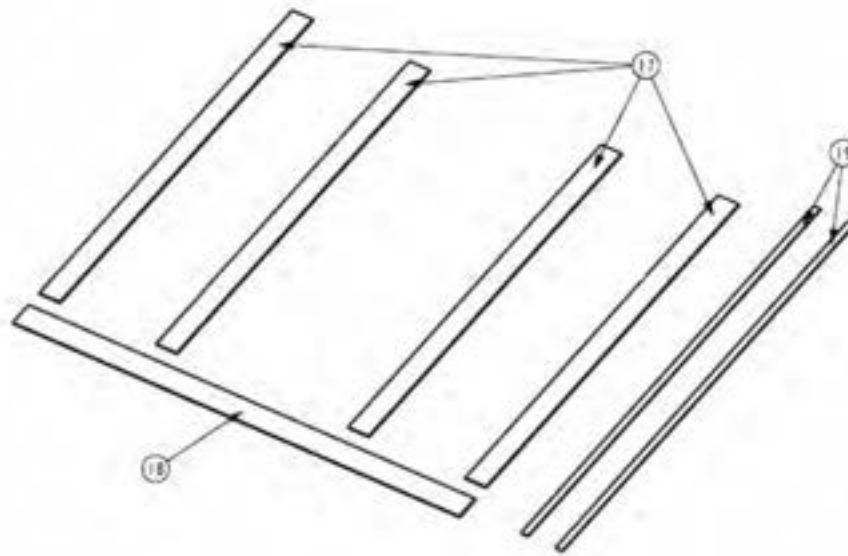
FIGURES 36b SCM HULL ACCESSORIES

SCM HULL ACCESSORIES

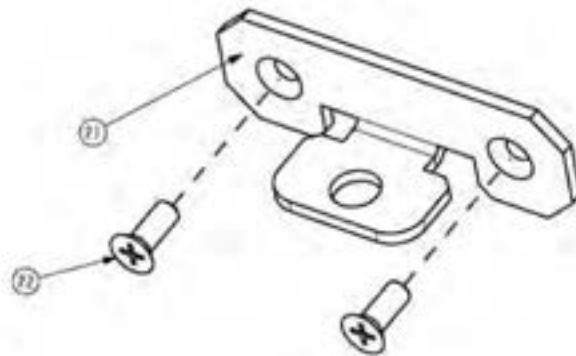


FIGURES 36c SCM HULL ACCESSORIES

SCM HULL ACCESSORIES



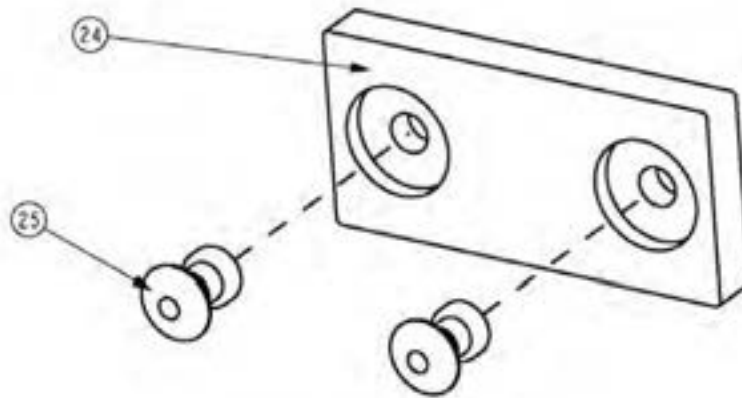
UPHMM KIT
#5980706



HASP KIT - GRAY
#5980801 -003

FIGURES 36d SCM HULL ACCESSORIES

SECURITY BAR BUMPER



SECURITY BAR BUMPER KIT
•15980707

FIGURE 36e SECURITY BAR BUMPER

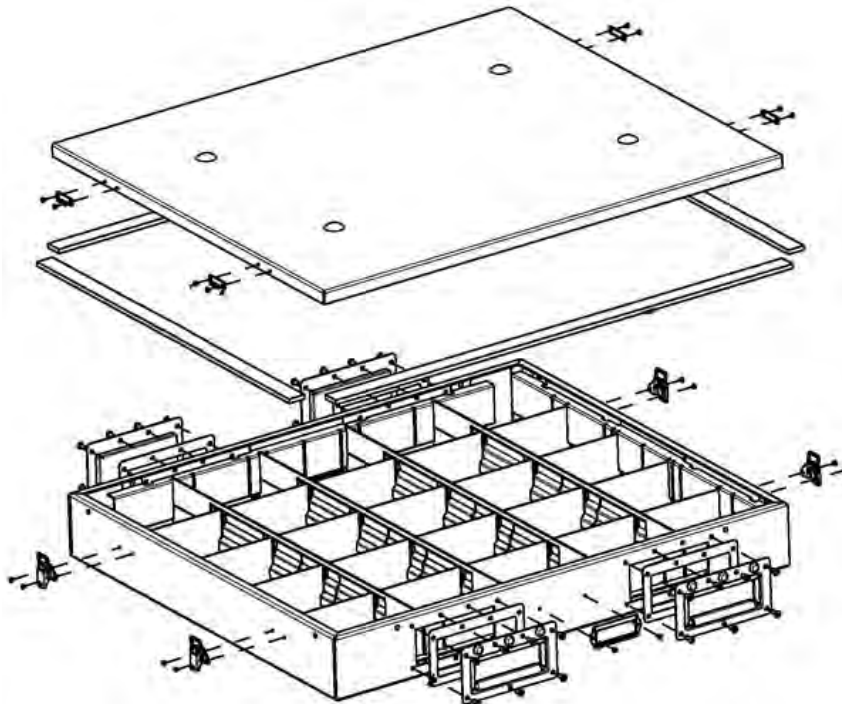
**FIGURES 36a, 36b, 36c, 36d and 36e GROUP 05
SCM HULL ACCESSORIES**

ITEM	NSN	CAGE	PART NO.	DESCRIPTION	QTY
1	NOT ASSIGNED	INSG3	15980700	.HULL BUMPER KIT	1
2	NOT ASSIGNED	INSG3	NOT ASSIGNED	..SIDE BUMPER KIT	2
3	NOT ASSIGNED	INSG3	NOT ASSIGNED	..REAR BUMPER KIT	2
4	NOT ASSIGNED	INSG3	NOT ASSIGNED	..RIVET, 3/16" X 1/2" LG	12
5	NOT ASSIGNED	INSG3	15980701	.30" COVER VELCRO KIT	1
6	NOT ASSIGNED	INSG3	NOT ASSIGNED	..HOOK HORIZONTAL	4
7	NOT ASSIGNED	INSG3	NOT ASSIGNED	..HOOK, VERTICAL	2
8	NOT ASSIGNED	INSG3	NOT ASSIGNED	..RIVET, 3/16" X 1/4" LG	14
9	NOT ASSIGNED	INSG3	15980702	.18" COVER VELCRO KIT	1
10	NOT ASSIGNED	INSG3	NOT ASSIGNED	..HOOK HORIZONTAL	4
11	NOT ASSIGNED	INSG3	NOT ASSIGNED	..HOOK, VERTICAL	2
12	NOT ASSIGNED	INSG3	NOT ASSIGNED	..RIVET, 3/16" X 1/4" LG	14
13	NOT ASSIGNED	INSG3	15980705	.HULL HANDLE KIT	1
14	NOT ASSIGNED	INSG3	NOT ASSIGNED	..CASE HANDLE	1
15	NOT ASSIGNED	INSG3	NOT ASSIGNED	..RIVET, 3/16" X 1/4" LG	14
16	NOT ASSIGNED	INSG3	15980706	.UHMW KIT	1
17	NOT ASSIGNED	INSG3	NOT ASSIGNED	..1-1/2" STRIP X 27-1 2 LG	4
18	NOT ASSIGNED	INSG3	NOT ASSIGNED	..1-1/2" STRIP X 31 LG	1
19	NOT ASSIGNED	INSG3	NOT ASSIGNED	..1/2" STRIP	2
20	NOT ASSIGNED	INSG3	15980801	.HASP KIT	1
21	NOT ASSIGNED	INSG3	NOT ASSIGNED	..HASP	1
22	NOT ASSIGNED	INSG3	NOT ASSIGNED	..SCREW, 10-32 X 1/2", FLAT	2
23	NOT ASSIGNED	INSG3	15980707	.SECURITY BAR BUMPER KIT	1
24	NOT ASSIGNED	INSG3	NOT ASSIGNED	..HDPE BUMPER	1
25	NOT ASSIGNED	INSG3	NOT ASSIGNED	..RIVET, 3/16" X 1/4" LG	2

END OF FIGURES 36a, 36b, 36c, 36d and 36e

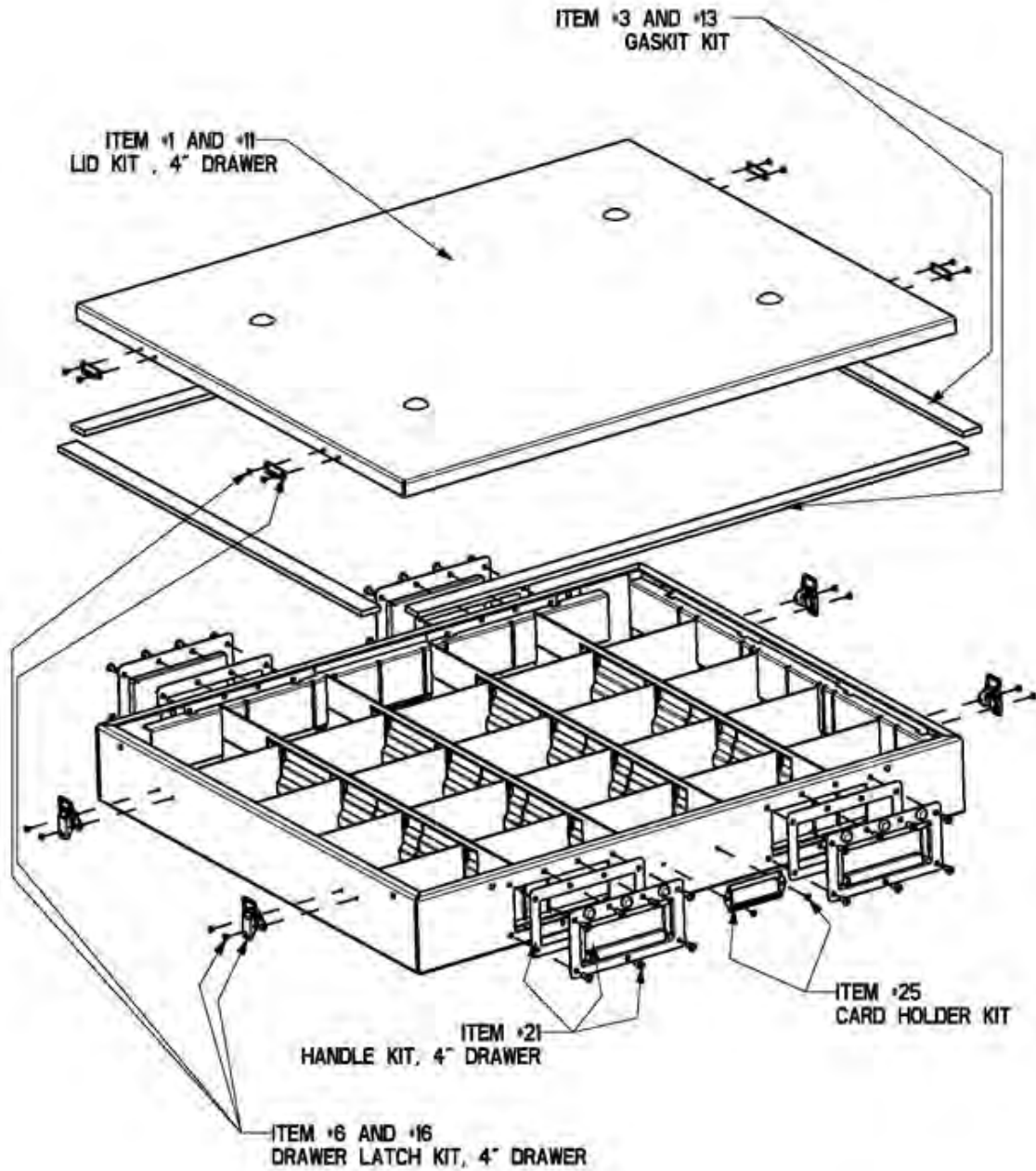
END OF WORK PACKAGE

PARTS SUPPORTING INFORMATION**FPU® SYSTEMS OPERATION MANUAL
(INCLUDING REPAIR PARTS & SPECIAL TOOL LIST)
SMALL CABINET MODULE (SCM)
BOH FPU Field Pack-up Units****BOH FPU SCM DRAWER ASSEMBLIES**



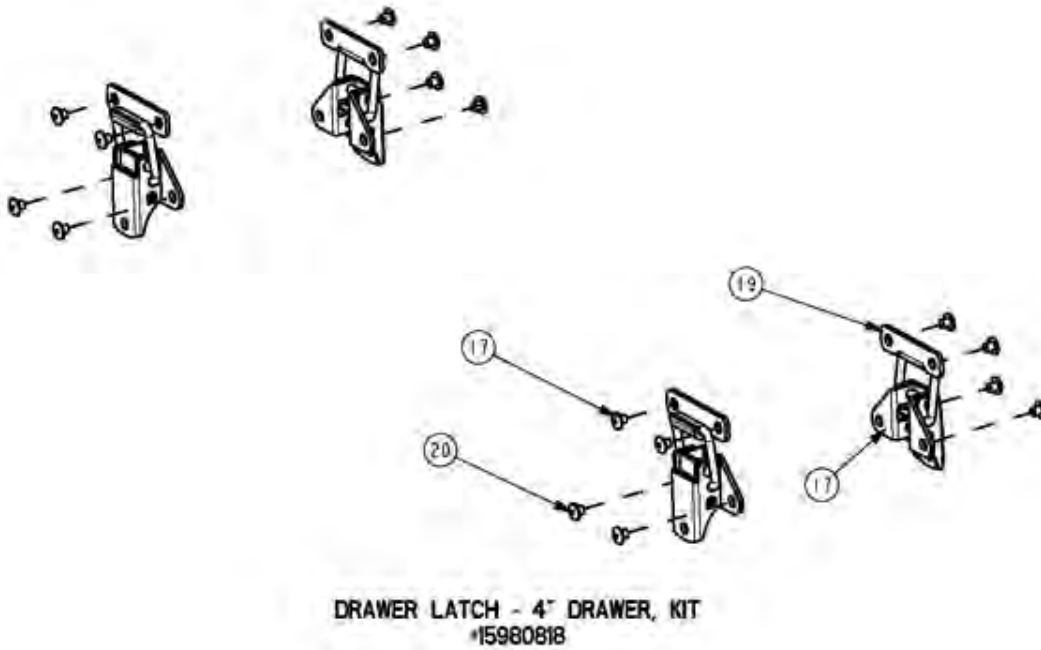
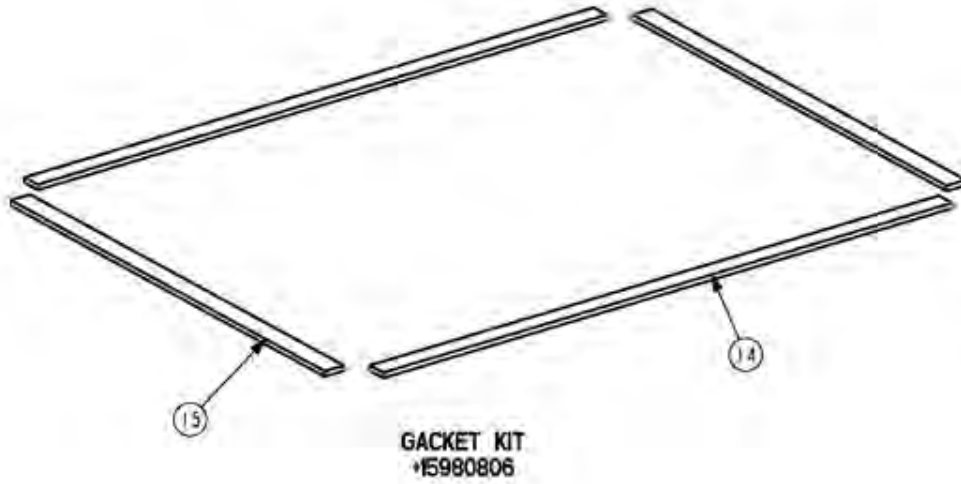
**SCM DRAWER ACCESSORIES
FIGURES 37a, 37b, 37c, 37d, 37e and 37f**

SCM 4" DRAWER ACCESSORIES



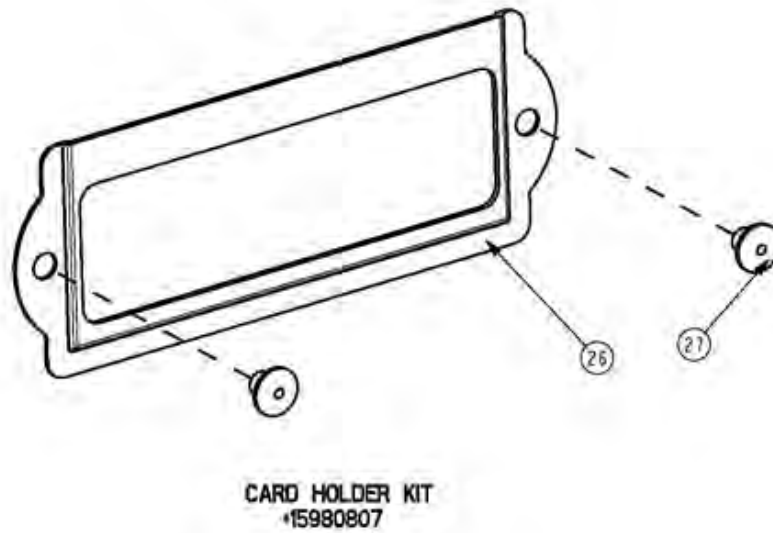
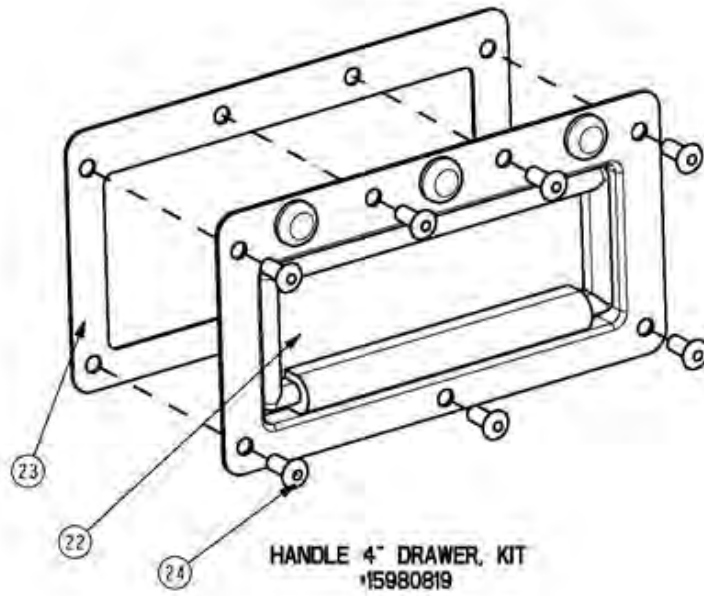
FIGURES 37a SCM 4" DRAWER ACCESSORIES

SCM 4" DRAWER ACCESSORIES



FIGURES 37b SCM 4" DRAWER ACCESSORIES

SCM 4" DRAWER ACCESSORIES



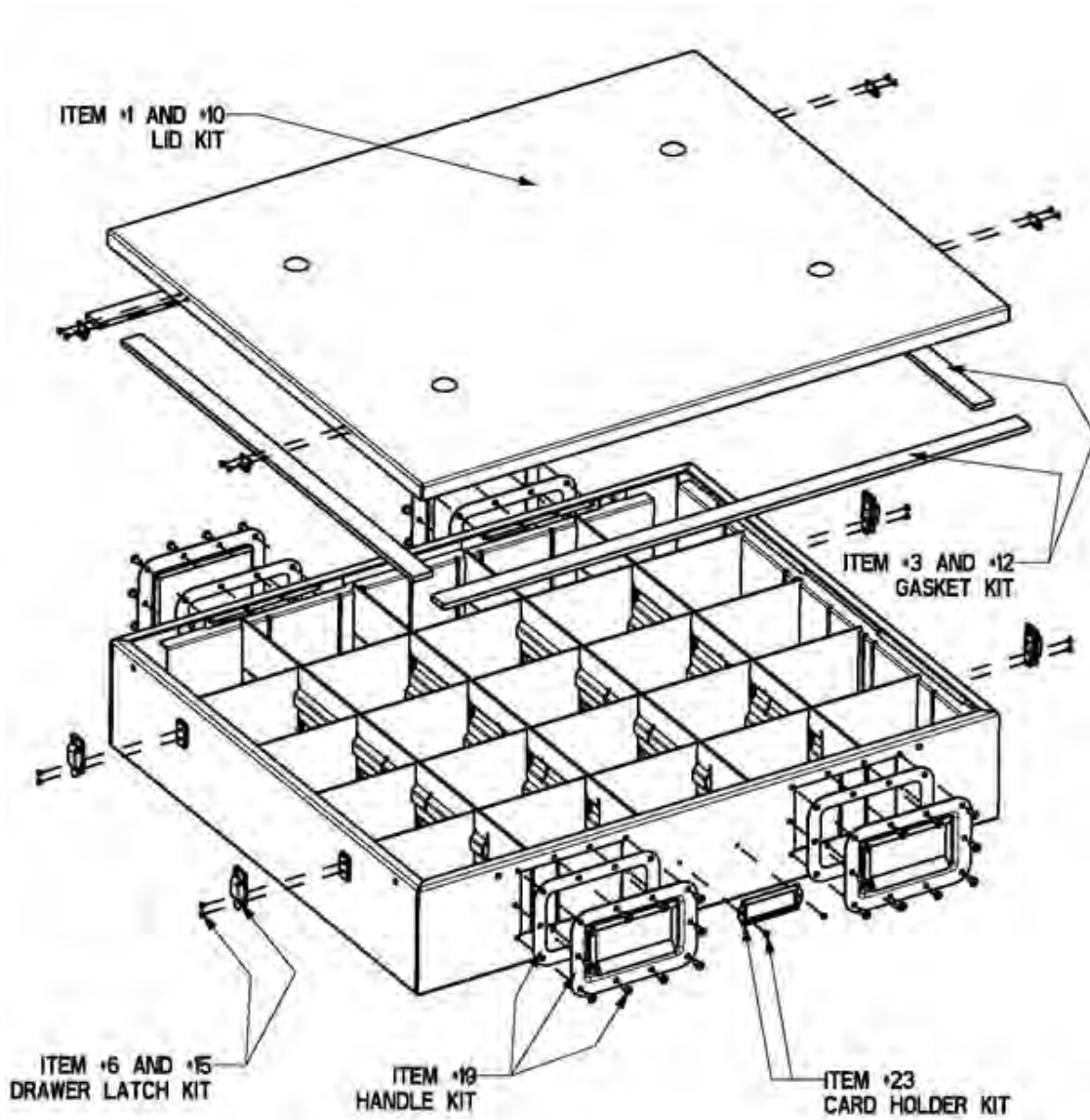
FIGURES 37c SCM 4" DRAWER ACCESSORIES

**FIGURES 37a, 37b and 37c GROUP 06
SCM 4" DRAWER ASSEMBLIES**

ITEM	NSN	CAGE	PART NO.	DESCRIPTION	QTY
1	NOT ASSIGNED	INSG3	15980820-001	.LID KIT, 4" DRAWER, GREEN	1
2	NOT ASSIGNED	INSG3	NOT ASSIGNED	..LID 4", GREEN	1
3	NOT ASSIGNED	INSG3	15980806	...GASKET KIT	1
4	NOT ASSIGNED	INSG3	NOT ASSIGNED	...GASKET, DRAWER FOAM A	2
5	NOT ASSIGNED	INSG3	NOT ASSIGNED	...GASKET, DRAWER FOAM B	2
6	NOT ASSIGNED	INSG3	15980818	..DRAWER LATCH KIT, 4" DRAWER	1
7	NOT ASSIGNED	INSG3	NOT ASSIGNED	...DRAWER LATCH	4
8	NOT ASSIGNED	INSG3	NOT ASSIGNED	...CATCH PLATE	4
9	NOT ASSIGNED	INSG3	NOT ASSIGNED	...RIVET, 1/8" X 1/8" GRIP	8
10	NOT ASSIGNED	INSG3	NOT ASSIGNED	...RIVET, 1/8" X 3/16" GRIP	8
11	NOT ASSIGNED	INSG3	15980820-002	.LID KIT, 4" DRAWER, TAN	1
12	NOT ASSIGNED	INSG3	NOT ASSIGNED	..LID, TAN	1
13	NOT ASSIGNED	INSG3	15980806	...GASKET KIT	1
14	NOT ASSIGNED	INSG3	NOT ASSIGNED	...GASKET, DRAWER FOAM A	2
15	NOT ASSIGNED	INSG3	NOT ASSIGNED	...GASKET, DRAWER FOAM B	2
16	NOT ASSIGNED	INSG3	15980818	..DRAWER LATCH KIT, 4" DRAWER	1
17	NOT ASSIGNED	INSG3	NOT ASSIGNED	...DRAWER LATCH	4
18	NOT ASSIGNED	INSG3	NOT ASSIGNED	...RIVET, 1/8" X 1/8" GRIP	8
19	NOT ASSIGNED	INSG3	NOT ASSIGNED	...CATCH PLATE	4
20	NOT ASSIGNED	INSG3	NOT ASSIGNED	...RIVET, 1/8" X 3/16" GRIP	8
21	NOT ASSIGNED	INSG3	15980819	.HANDLE KIT, 4" DRAWER	1
22	NOT ASSIGNED	INSG3	NOT ASSIGNED	..HANDLE, 4" DRAWER	1
23	NOT ASSIGNED	INSG3	NOT ASSIGNED	..GASKET, 4" DRAWER HANDLE	1
24	NOT ASSIGNED	INSG3	NOT ASSIGNED	..RIVET, 3/16" X 1/4" GRIP	7
25	NOT ASSIGNED	INSG3	15980807	.CARD HOLDER KIT	1
26	NOT ASSIGNED	INSG3	NOT ASSIGNED	..CARD HOLDER	1
27	NOT ASSIGNED	INSG3	NOT ASSIGNED	..RIVET, 1/8" X 3/16" GRIP	2

END OF FIGURE 37a, 37b and 37c

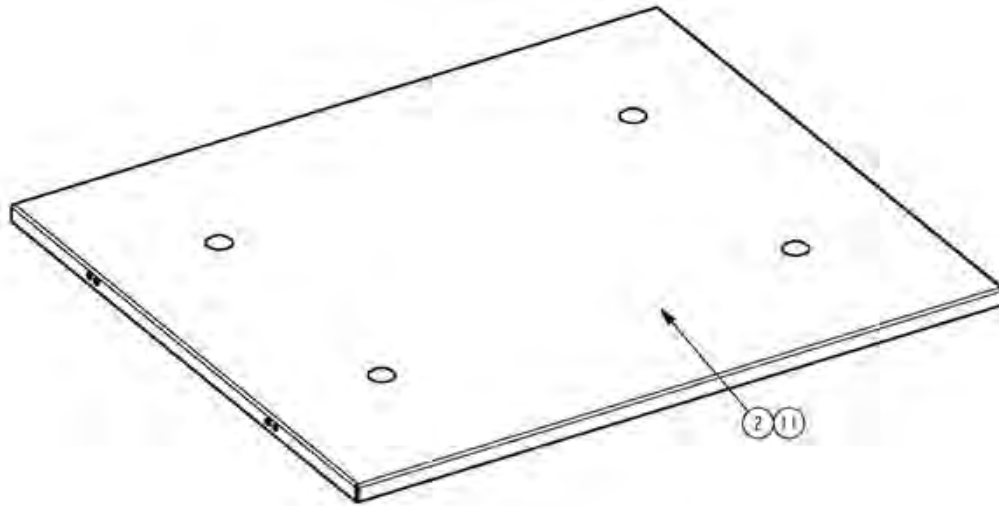
SCM 6" through 16" DRAWER ACCESSORIES



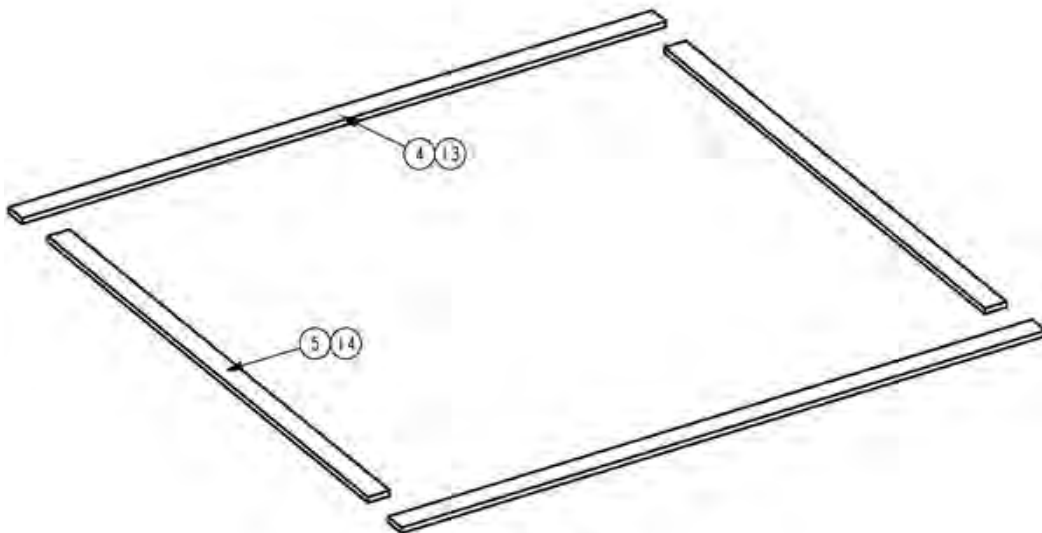
NOTE:
DETAILED KIT INFO ON NEXT PAGE.

FIGURES 37d, 37e and 37f SCM 6" through 16" DRAWER ACCESSORIES

SCM 6" through 16" DRAWER ACCESSORIES



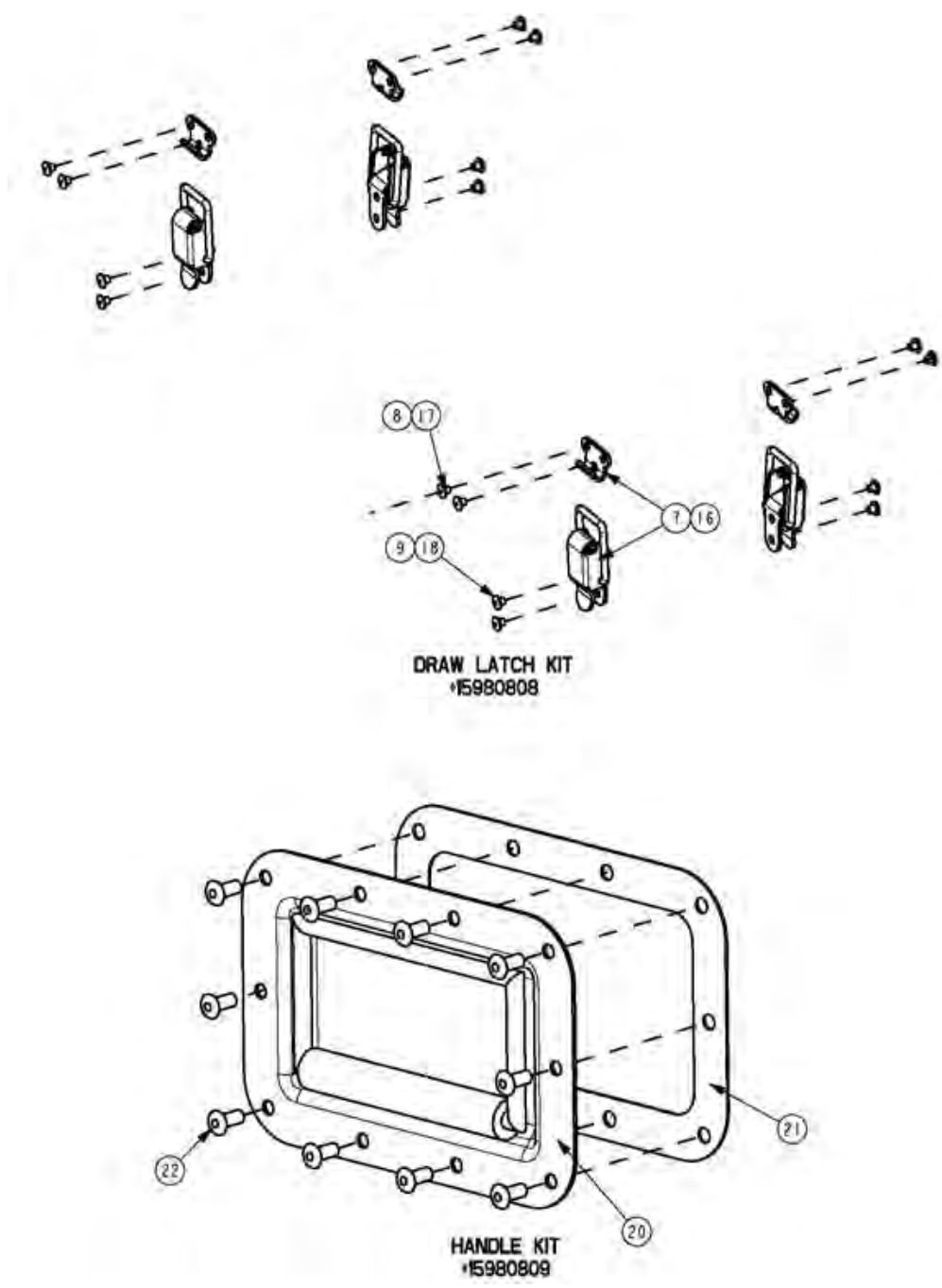
LID KIT - GREEN/TAN
#15980821 - 001/002



GASKET KIT
#15980806

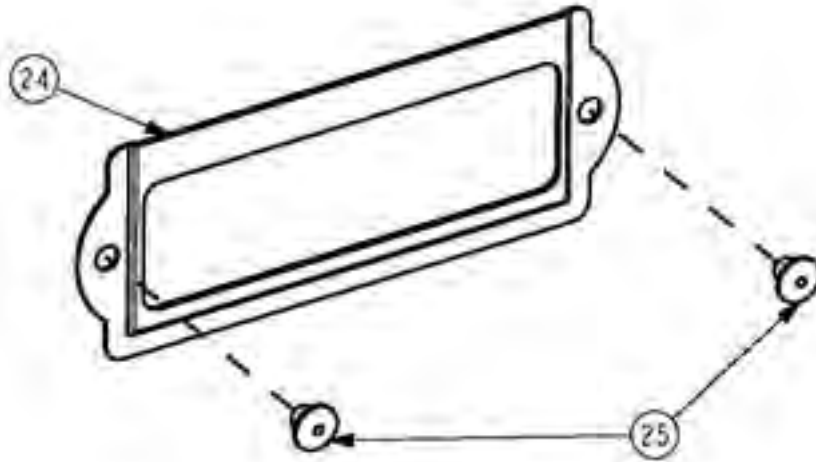
FIGURES 37d SCM 6" through 16" DRAWER ACCESSORIES

SCM 6" through 16" DRAWER ACCESSORIES



FIGURES 37e SCM 6" through 16" DRAWER ACCESSORIES

SCM 6" through 16" DRAWER ACCESSORIES



CARD HOLDER KIT
#15980807

FIGURES 37f SCM 6" through 16" DRAWER ACCESSORIES

**FIGURES 37d, 37e, and 37f GROUP 06
SCM 6" through 16" DRAWER ACCESSORIES**

ITEM	NSN	CAGE	PART NO.	DESCRIPTION	QTY
1	NOT ASSIGNED	INSG3	15980821-001	..LID KIT, DRAWER, GREEN	1
2	NOT ASSIGNED	INSG3	NOT ASSIGNED	...LID, GREEN	1
3	NOT ASSIGNED	INSG3	15980806	...GASKET KIT	1
4	NOT ASSIGNED	INSG3	NOT ASSIGNED	...GASKET, DRAWER FOAM A	2
5	NOT ASSIGNED	INSG3	NOT ASSIGNED	...GASKET, DRAWER FOAM B	2
6	NOT ASSIGNED	INSG3	15980808	..DRAWER LATCH KIT, DRAWER	1
7	NOT ASSIGNED	INSG3	NOT ASSIGNED	...DRAWER LATCH	4
8	NOT ASSIGNED	INSG3	NOT ASSIGNED	...RIVET, 1/8" X 1/8" GRIP	8
9	NOT ASSIGNED	INSG3	NOT ASSIGNED	...RIVET, 1/8" X 3/16" GRIP	8
10	NOT ASSIGNED	INSG3	15980821-002	..LID KIT, DRAWER, TAN	1
11	NOT ASSIGNED	INSG3	NOT ASSIGNED	...LID, TAN	1
12	NOT ASSIGNED	INSG3	15980806	...GASKET KIT	1
13	NOT ASSIGNED	INSG3	NOT ASSIGNED	...GASKET, DRAWER FOAM A	2
14	NOT ASSIGNED	INSG3	NOT ASSIGNED	...GASKET, DRAWER FOAM B	2
15	NOT ASSIGNED	INSG3	15980808	..DRAWER LATCH KIT, DRAWER	1
16	NOT ASSIGNED	INSG3	NOT ASSIGNED	...DRAWER LATCH	4
17	NOT ASSIGNED	INSG3	NOT ASSIGNED	...RIVET, 1/8" X 1/8" GRIP	8
18	NOT ASSIGNED	INSG3	NOT ASSIGNED	...RIVET, 1/8" X 3/16" GRIP	8
19	NOT ASSIGNED	INSG3	15980809	..HANDLE KIT, DRAWER	1
20	NOT ASSIGNED	INSG3	NOT ASSIGNED	..HANDLE, DRAWER	1
21	NOT ASSIGNED	INSG3	NOT ASSIGNED	..GASKET, DRAWER HANDLE	1
22	NOT ASSIGNED	INSG3	NOT ASSIGNED	..RIVET, 3/16" X 1/4" GRIP	10
23	NOT ASSIGNED	INSG3	15980807	..CARD HOLDER KIT	1
24	NOT ASSIGNED	INSG3	NOT ASSIGNED	..CARD HOLDER	1
25	NOT ASSIGNED	INSG3	NOT ASSIGNED	..RIVET, 1/8" X 3/16" GRIP	2

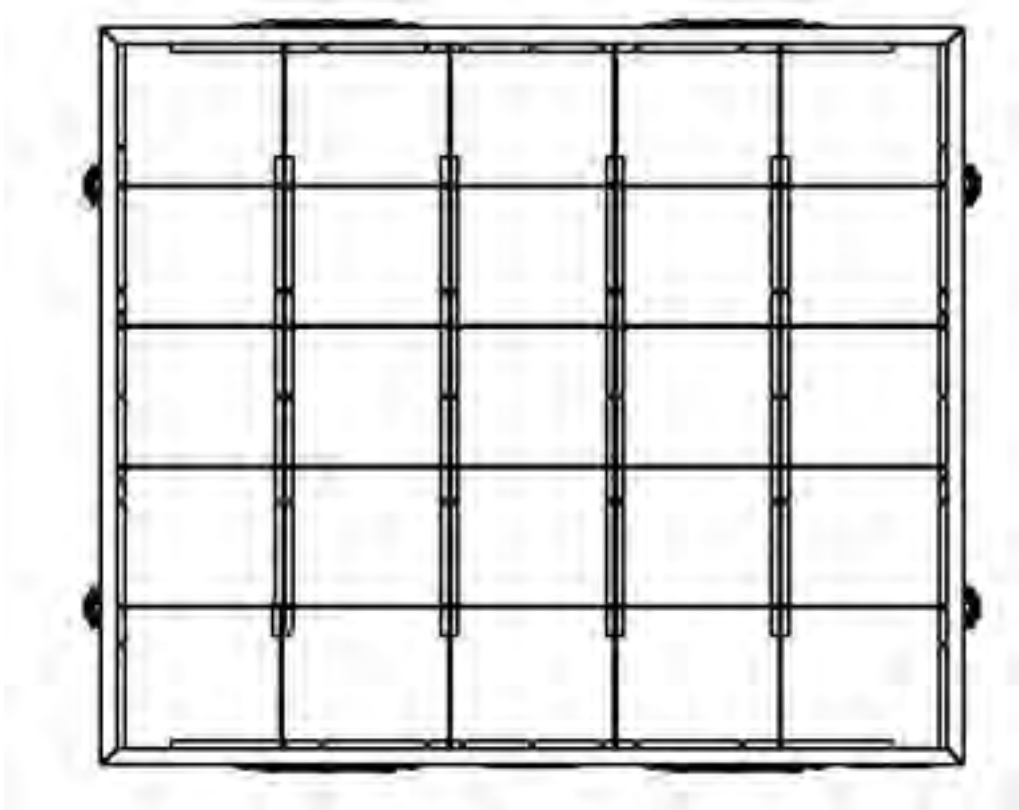
END OF FIGURE 37d, 37e and 37f

END OF WORK PACKAGE

PARTS SUPPORTING INFORMATION

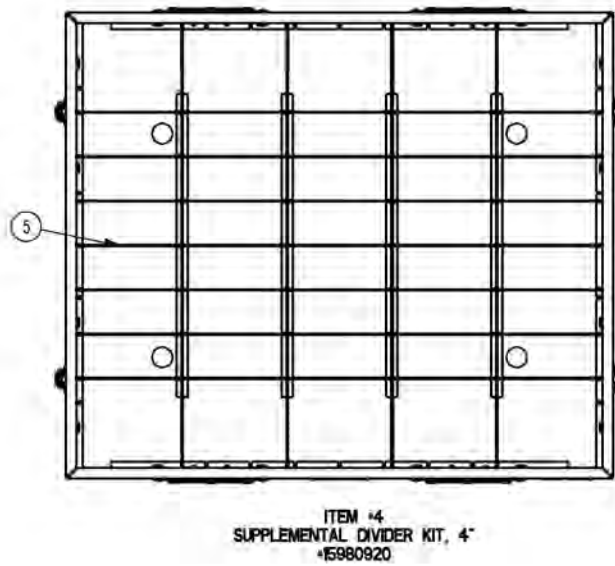
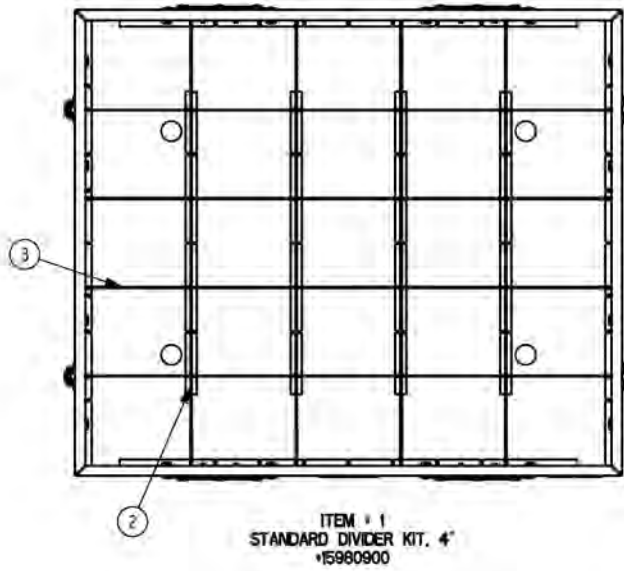
**FPU® SYSTEMS OPERATION MANUAL
(INCLUDING REPAIR PARTS & SPECIAL TOOL LIST)
SMALL CABINET MODULE (SCM)
BOH FPU Field Pack-up Units**

BOH FPU SCM DRAWER DIVIDER KITS



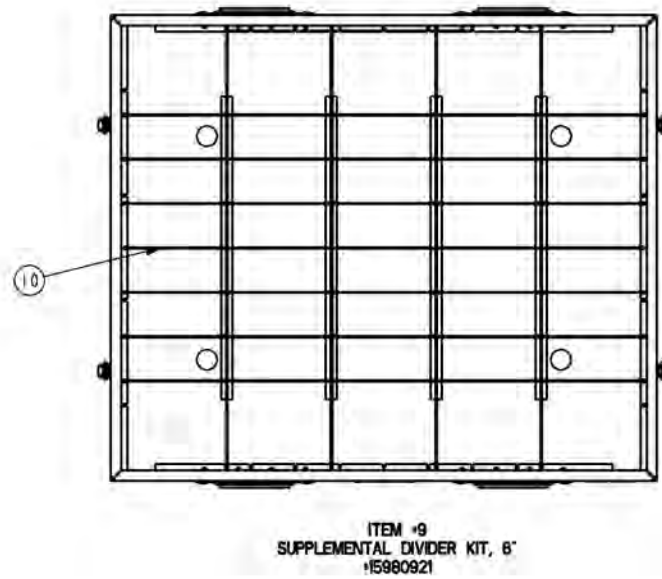
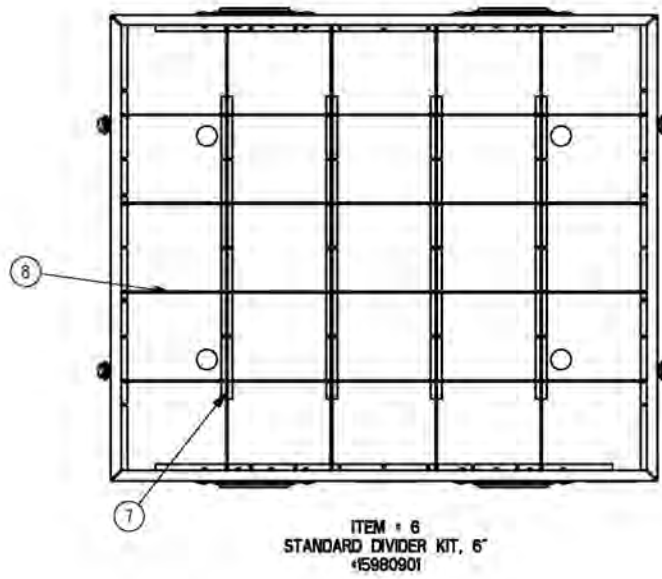
**SCM 4" through 16" DRAWER DIVIDER KITS
FIGURES 38a, 38b, 38c, 38d, 38e and 38f**

SCM 4" DRAWER DIVIDER KIT



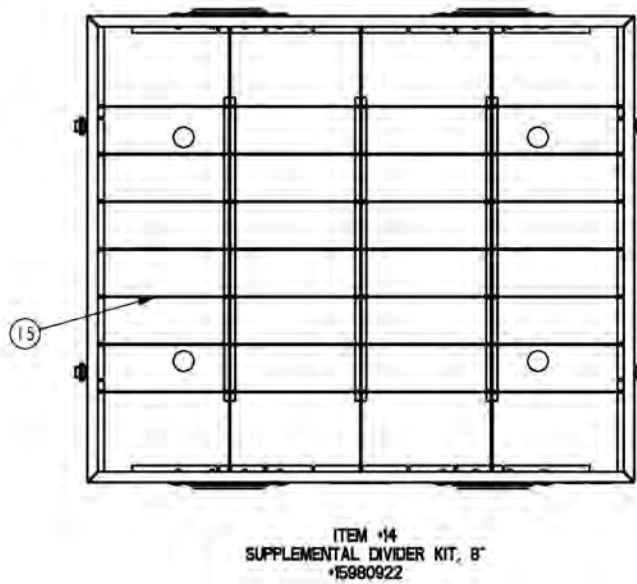
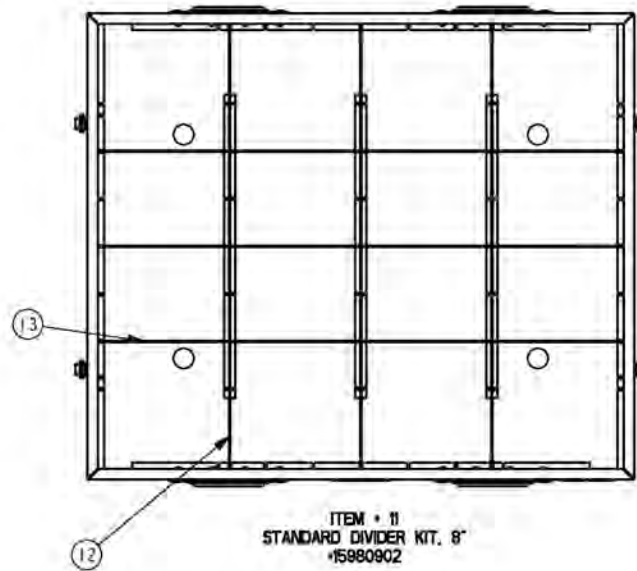
FIGURES 38a SCM 4" DRAWER DIVIDER KIT

SCM 6" DRAWER DIVIDER KIT



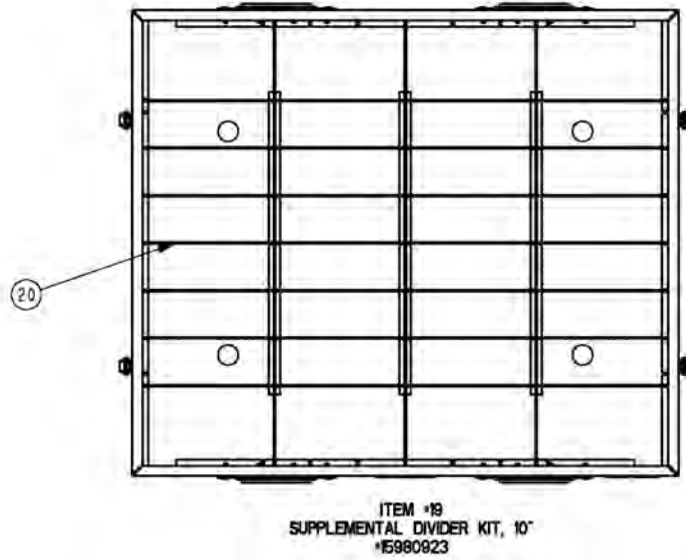
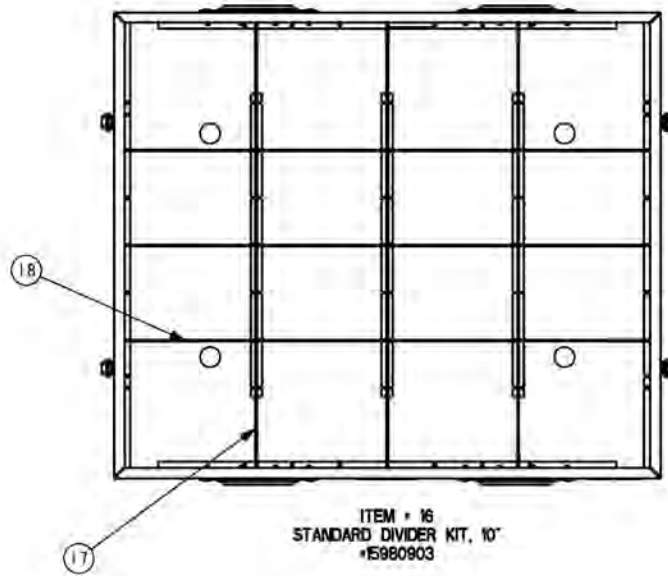
FIGURES 38b SCM 6" DRAWER DIVIDER KIT

SCM 8" DRAWER DIVIDER KIT



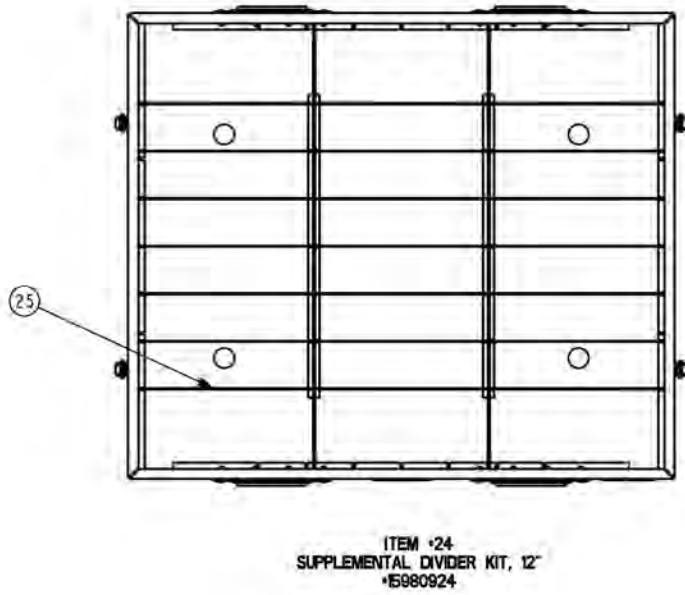
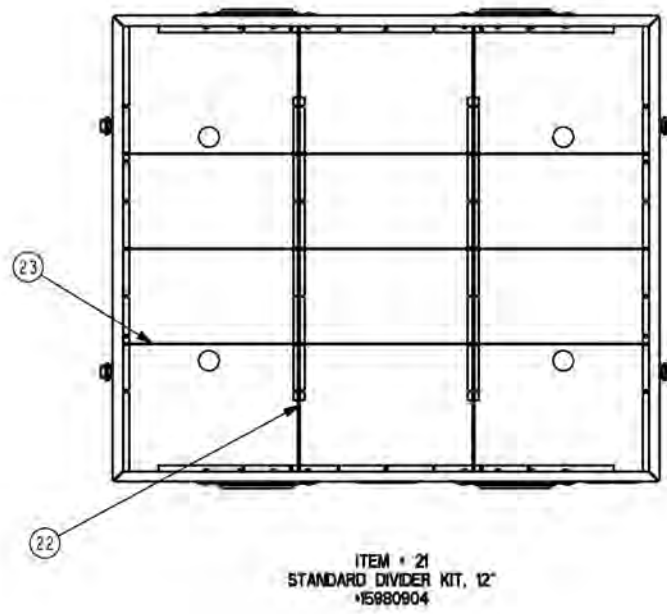
FIGURES 38c SCM 8" DRAWER DIVIDER KIT

SCM 10" DRAWER DIVIDER KIT



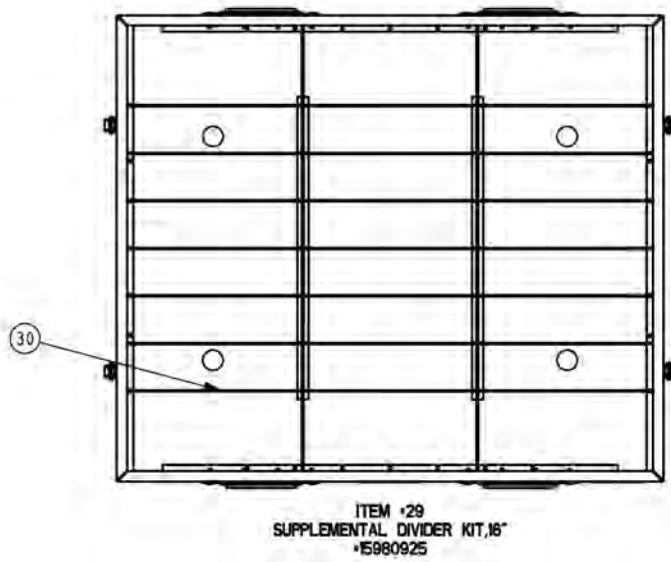
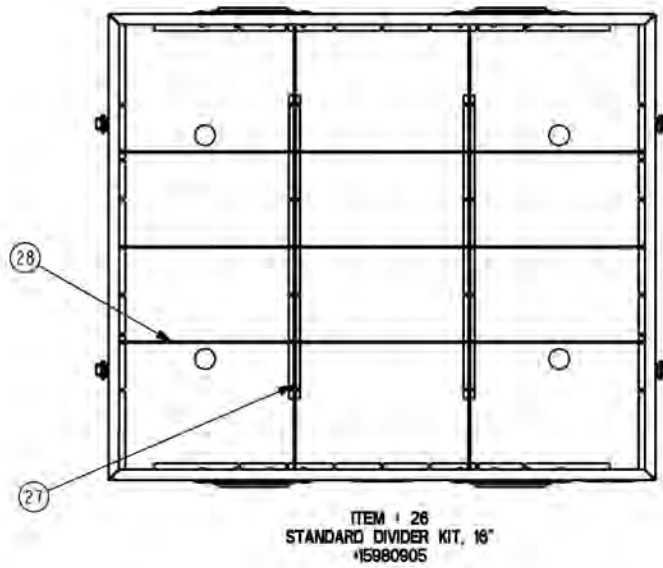
FIGURES 38d SCM 10" DRAWER DIVIDER KIT

SCM 12" DRAWER DIVIDER KIT



FIGURES 38e SCM 12" DRAWER DIVIDER KIT

SCM 16" DRAWER DIVIDER KIT



FIGURES 38f SCM 16" DRAWER DIVIDER KIT

**FIGURES 38a through 38f GROUP 07
SCM 4" through 16" DRAWER DIVIDER KITS**

ITEM	NSN	CAGE	PART NO.	DESCRIPTION	QTY
1	NOT ASSIGNED	INSG3	15980900	STANDARD DIVIDER KIT, 4"	1
2	NOT ASSIGNED	INSG3	NOT ASSIGNED	DIVIDER, 4" DRAWER	4
3	NOT ASSIGNED	INSG3	NOT ASSIGNED	INSERT, 4" DRAWER	20
4	NOT ASSIGNED	INSG3	15980920	SUPPLEMENTAL INSERT KIT, 4"	1
5	NOT ASSIGNED	INSG3	NOT ASSIGNED	INSERT, 4" DRAWER	15
6	NOT ASSIGNED	INSG3	15980901	STANDARD DIVIDER KIT, 6"	1
7	NOT ASSIGNED	INSG3	NOT ASSIGNED	DIVIDER, 6" DRAWER	4
8	NOT ASSIGNED	INSG3	NOT ASSIGNED	INSERT, 6" DRAWER	20
9	NOT ASSIGNED	INSG3	15980921	SUPPLEMENTAL INSERT KIT, 6"	1
10	NOT ASSIGNED	INSG3	NOT ASSIGNED	INSERT, 6" DRAWER	15
11	NOT ASSIGNED	INSG3	15980902	STANDARD DIVIDER KIT, 8"	1
12	NOT ASSIGNED	INSG3	NOT ASSIGNED	DIVIDER, 8" DRAWER	3
13	NOT ASSIGNED	INSG3	NOT ASSIGNED	INSERT, 8" DRAWER	12
14	NOT ASSIGNED	INSG3	15980922	SUPPLEMENTAL INSERT KIT, 8"	1
15	NOT ASSIGNED	INSG3	NOT ASSIGNED	INSERT, 8" DRAWER	16
16	NOT ASSIGNED	INSG3	15980903	STANDARD DIVIDER KIT, 10"	1
17	NOT ASSIGNED	INSG3	NOT ASSIGNED	DIVIDER, 10" DRAWER	3
18	NOT ASSIGNED	INSG3	NOT ASSIGNED	INSERT, 10" DRAWER	12
19	NOT ASSIGNED	INSG3	15980923	SUPPLEMENTAL INSERT KIT, 10"	1
20	NOT ASSIGNED	INSG3	NOT ASSIGNED	DIVIDER, 10" DRAWER	16
21	NOT ASSIGNED	INSG3	15980904	STANDARD DIVIDER KIT, 12"	1
22	NOT ASSIGNED	INSG3	NOT ASSIGNED	DIVIDER, 12" DRAWER	2
23	NOT ASSIGNED	INSG3	NOT ASSIGNED	INSERT, 12" DRAWER	9
24	NOT ASSIGNED	INSG3	15980924	SUPPLEMENTAL INSERT KIT, 12"	1
25	NOT ASSIGNED	INSG3	NOT ASSIGNED	INSERT, 12" DRAWER	12
26	NOT ASSIGNED	INSG3	15980905	STANDARD DIVIDER KIT, 16"	1
27	NOT ASSIGNED	INSG3	NOT ASSIGNED	DIVIDER, 16" DRAWER	2
28	NOT ASSIGNED	INSG3	NOT ASSIGNED	INSERT, 16" DRAWER	9
29	NOT ASSIGNED	INSG3	15980925	SUPPLEMENTAL INSERT KIT, 16"	1
30	NOT ASSIGNED	INSG3	NOT ASSIGNED	INSERT, 16" DRAWER	12

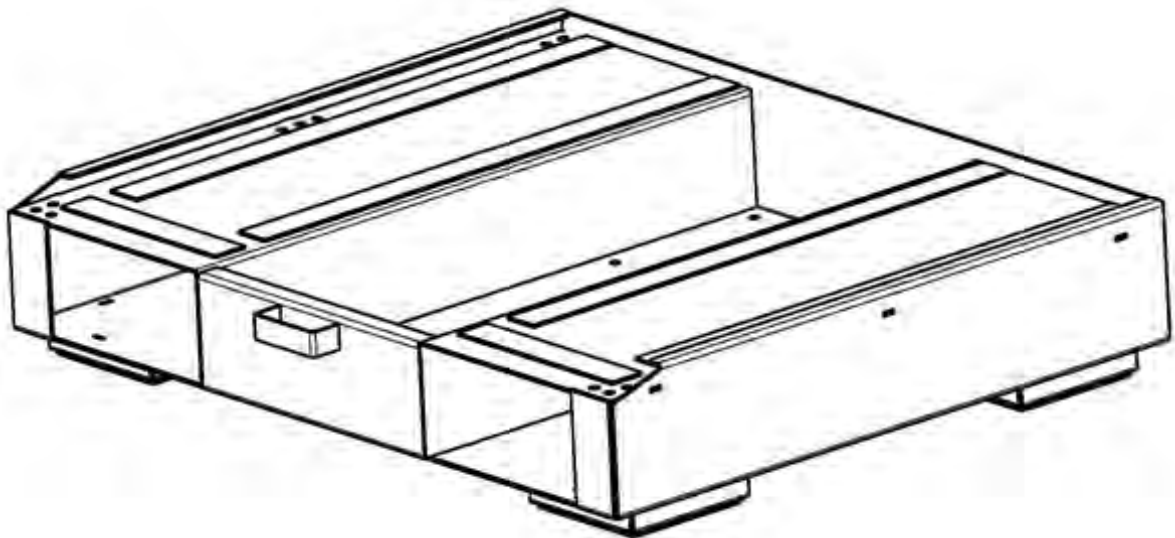
END OF FIGURE 38a through 38f

END OF WORK PACKAGE

PARTS SUPPORTING INFORMATION

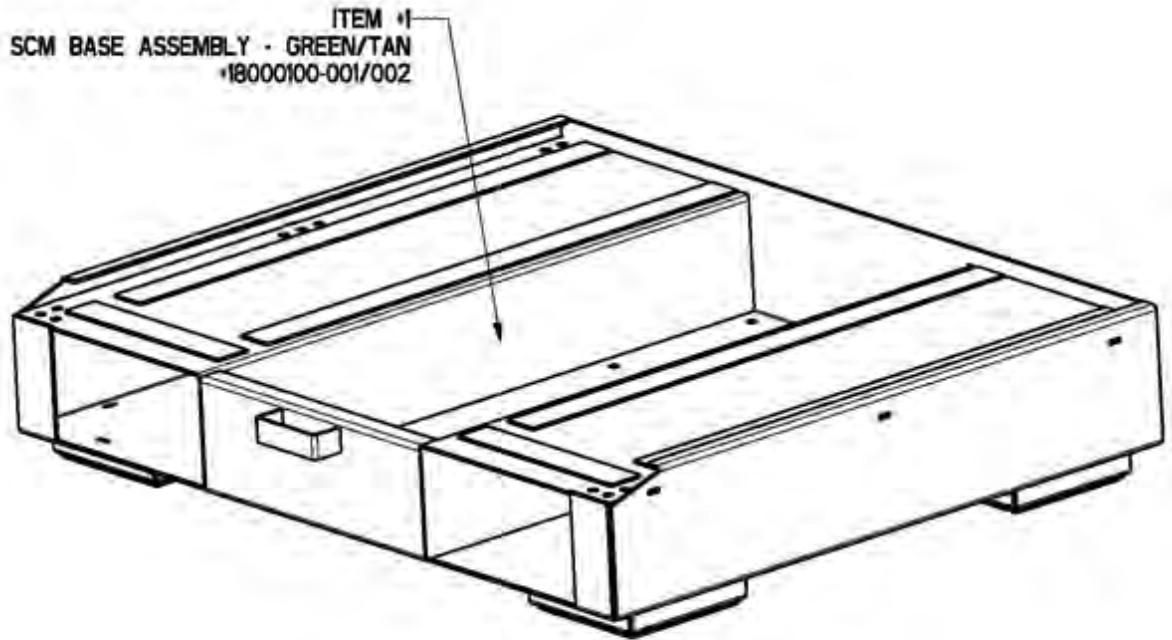
**FPU® SYSTEMS OPERATION MANUAL
(INCLUDING REPAIR PARTS & SPECIAL TOOL LIST)
SMALL CABINET MODULE (SCM)
BOH FPU Field Pack-up Units**

BOH FPU SCM CABINET BASE



**BOH FPU SCM CABINET BASE
FIGURES 39a 39b, and 39c**

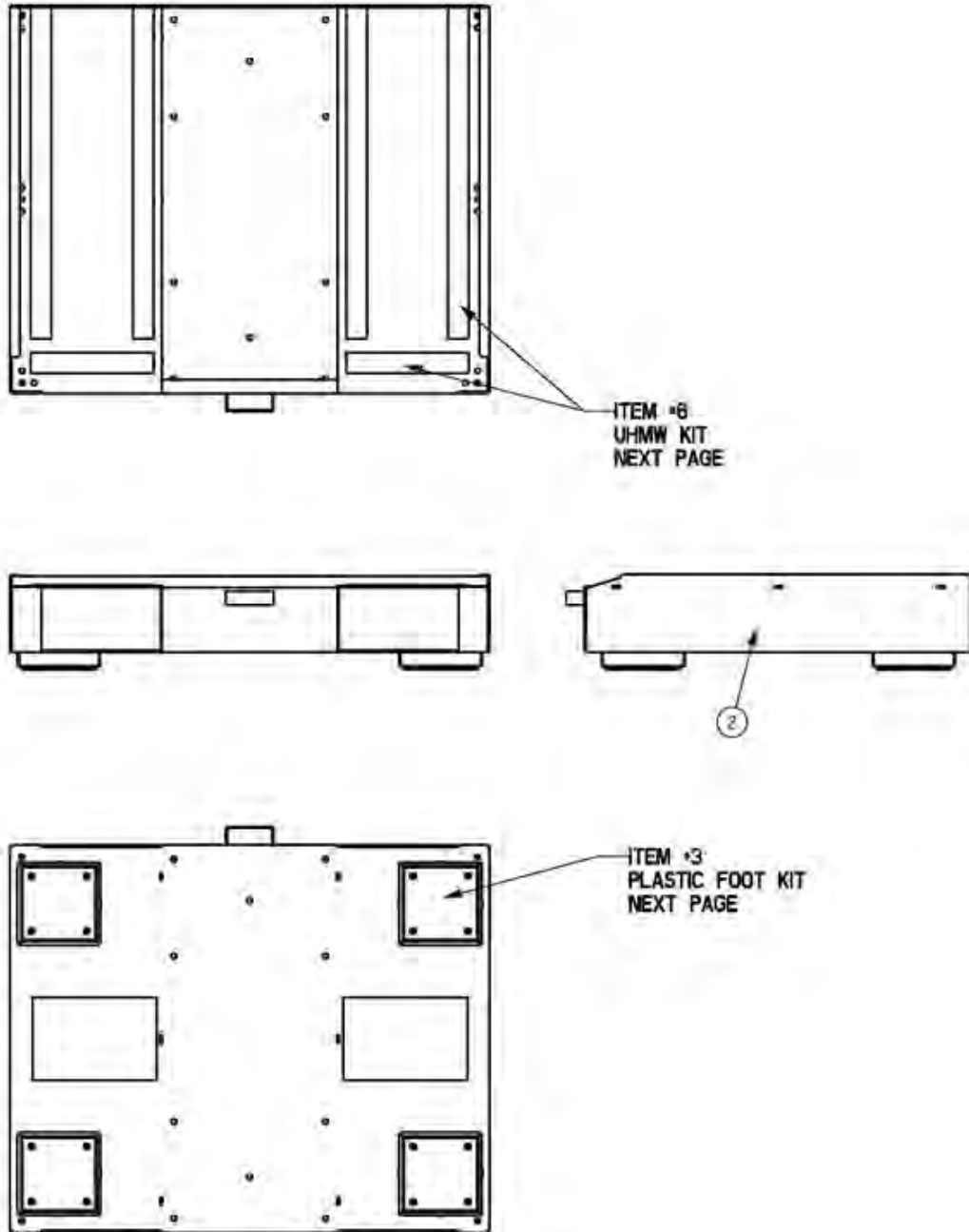
SCM CABINET BASE



DETAIL INFO ON NEXT PAGE

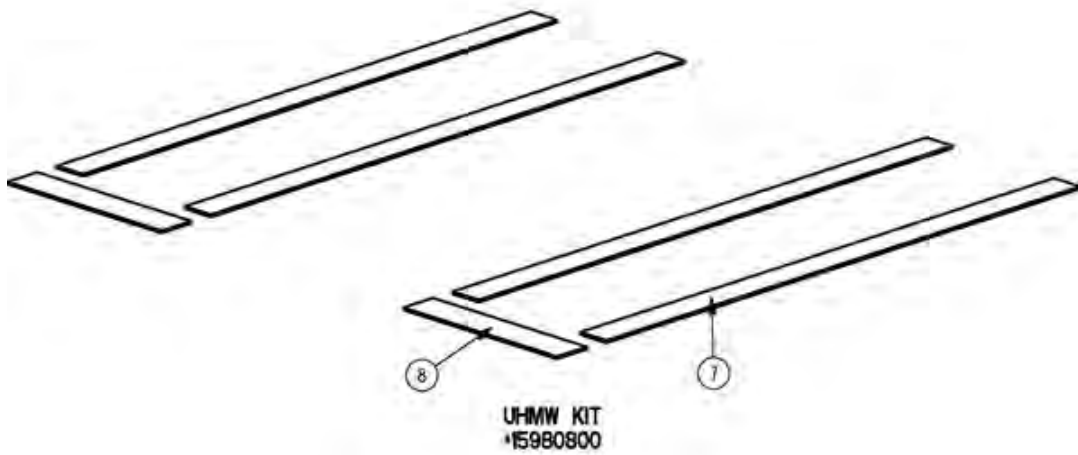
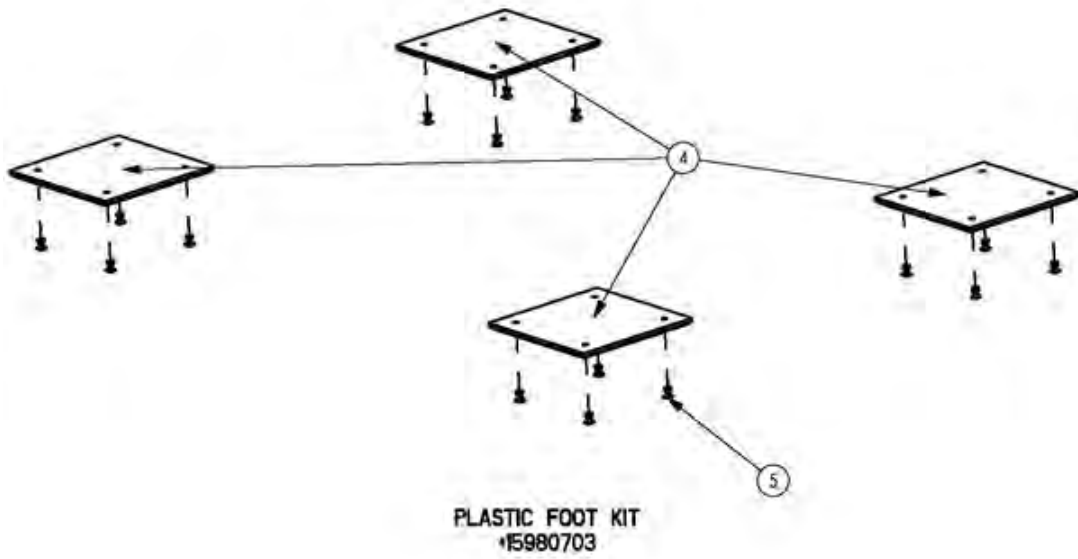
FIGURES 39a SCM CABINET BASE

SCM CABINET BASE



FIGURES 39b SCM CABINET BASE

SCM CABINET BASE



FIGURES 39c SCM CABINET BASE

**FIGURES 39a 39b, and 39c GROUP 08
SCM CABINET BASE**

ITEM	NSN	CAGE	PART NO.	DESCRIPTION	QTY
1	NOT ASSIGNED	INSG3	18000100-001/002	.SCM BASE ASSEMBLY, GREEN/TAN	1
2	NOT ASSIGNED	INSG3	NOT ASSIGNED	..BASE WELDMENT	1
3	NOT ASSIGNED	INSG3	15980703	..PLASTIC FOOT KIT	1
4	NOT ASSIGNED	INSG3	NOT ASSIGNED	...PLASTIC FOOT	4
5	NOT ASSIGNED	INSG3	NOT ASSIGNED	...3/16 RIVET	16
6	NOT ASSIGNED	INSG3	15980800	..UHMW KIT	1
7	NOT ASSIGNED	INSG3	NOT ASSIGNED	..UHMW SLIDE TAPE VERTICAL, 24"	4
8	NOT ASSIGNED	INSG3	NOT ASSIGNED	..UHMW SLIDE TAPE, 8-7/8"	2

END OF FIGURE 39a 39b, and 39c**END OF WORK PACKAGE**

This page was intentionally left blank

This page was intentionally left blank

PARTS SUPPORTING INFORMATION

**FPU® SYSTEMS OPERATION MANUAL
(INCLUDING REPAIR PARTS & SPECIAL TOOL LIST)
SMALL CABINET MODULE (SCM)
BOH FPU Field Pack-up Units**

PART NUMBER INDEX

Part Number	Fig.	Item
15980700	36b	1
15980701	36b	5
15980702	36a	9
15980703	39c	3
15980705	36a	13
15980706	36c	16
15980800	39c	6
15980802	1	17
15980802	1	17
15980803	1	18
15980803	1	18
15980804	1	19
15980804	1	19
15980806	37b	3
15980806	37b	13
15980806	37d	3
15980806	36d	12
15980807	37c	25
15980807	37e	23
15980808	37e	6
15980808	37e	15
15980809	37e	19
15980818	37b	6
15980818	37b	16
15980819	37c	21
15980900	38a	1
15980901	38b	6

Part Number	Fig.	Item
15980902	38c	11
15980903	38d	16
15980904	38e	21
15980905	38f	26
15980920	38a	4
15980921	38b	9
15980801-001/002	36	20
15980802-001	1	8
15980802-001	3	7
15980802-001	3	16
15980802-001	4	7
15980802-001	4	16
15980802-001	5	6
15980802-001	5	15
15980802-001	6	8
15980802-001	6	17
15980802-001	7	7
15980802-001	7	16
15980802-001	8	7
15980802-001	8	16
15980802-001	9	7
15980802-001	9	16
15980802-001	10	6
15980802-001	10	15
15980802-001	11	8
15980802-001	11	18
15980802-001	12	7

Part Number	Fig.	Item
15980802-001	12	17
15980802-001	13	7
15980802-001	13	17
15980802-001	14	8
15980802-001	14	18
15980802-001	15	6
15980802-001	15	16
15980802-001	16	6
15980802-001	16	15
15980802-001	17	7
15980802-001	17	16
15980802-001	28	8
15980802-001	29	7
15980802-001	30	7
15980802-001	31	8
15980802-001	32	6
15980802-001	33	6
15980802-001	34	7
15980802-001/002	35a	1
15980802-002	1	8
15980802-002	3	7
15980802-002	3	16
15980802-002	4	7
15980802-002	4	16
15980802-002	5	6
15980802-002	5	15
15980802-002	6	8
15980802-002	6	17
15980802-002	7	7
15980802-002	7	16
15980802-002	8	7
15980802-002	8	16
15980802-002	9	7
15980802-002	9	16
15980802-002	10	6
15980802-002	10	15
15980802-002	11	8

Part Number	Fig.	Item
15980802-002	11	18
15980802-002	12	7
15980802-002	12	18
15980802-002	13	7
15980802-002	13	17
15980802-002	14	8
15980802-002	14	18
15980802-002	15	6
15980802-002	15	16
15980802-002	16	6
15980802-002	16	15
15980802-002	17	7
15980802-002	17	16
15980802-002	28	8
15980802-002	29	7
15980802-002	30	7
15980802-002	31	8
15980802-002	32	6
15980802-002	33	6
15980802-002	34	7
15980803-001	1	9
15980803-001	3	8
15980803-001	3	17
15980803-001	4	8
15980803-001	4	17
15980803-001	5	7
15980803-001	5	16
15980803-001	6	9
15980803-001	6	18
15980803-001	7	8
15980803-001	7	17
15980803-001	8	8
15980803-001	8	17
15980803-001	9	8
15980803-001	9	17
15980803-001	10	7
15980803-001	10	16

Part Number	Fig.	Item
15980803-001	11	9
15980803-001	11	19
15980803-001	12	8
15980803-001	12	18
15980803-001	13	8
15980803-001	13	18
15980803-001	14	9
15980803-001	14	19
15980803-001	15	7
15980803-001	15	17
15980803-001	16	7
15980803-001	16	16
15980803-001	17	8
15980803-001	17	17
15980803-001	28	9
15980803-001	29	8
15980803-001	30	8
15980803-001	31	9
15980803-001	32	7
15980803-001	33	7
15980803-001	34	8
15980803-001/002	35b	4
15980803-002	1	9
15980803-002	3	8
15980803-002	3	17
15980803-002	4	8
15980803-002	4	17
15980803-002	5	7
15980803-002	5	16
15980803-002	6	9
15980803-002	6	18
15980803-002	7	8
15980803-002	7	17
15980803-002	8	8
15980803-002	8	17
15980803-002	9	8
15980803-002	9	17

Part Number	Fig.	Item
15980803-002	10	7
15980803-002	10	16
15980803-002	11	9
15980803-002	11	19
15980803-002	12	8
15980803-002	12	19
15980803-002	13	8
15980803-002	13	18
15980803-002	14	9
15980803-002	14	19
15980803-002	15	7
15980803-002	15	17
15980803-002	16	7
15980803-002	16	16
15980803-002	17	8
15980803-002	17	17
15980803-002	28	9
15980803-002	29	8
15980803-002	30	8
15980803-002	31	9
15980803-002	32	7
15980803-002	33	7
15980803-002	34	8
15980804-001	1	10
15980804-001	3	9
15980804-001	3	18
15980804-001	4	9
15980804-001	4	18
15980804-001	5	8
15980804-001	5	17
15980804-001	6	10
15980804-001	6	19
15980804-001	7	9
15980804-001	7	18
15980804-001	8	9
15980804-001	8	18
15980804-001	9	9

Part Number	Fig.	Item
15980804-001	9	18
15980804-001	10	8
15980804-001	10	17
15980804-001	11	10
15980804-001	11	20
15980804-001	12	9
15980804-001	12	19
15980804-001	13	9
15980804-001	13	19
15980804-001	14	10
15980804-001	14	20
15980804-001	15	8
15980804-001	15	18
15980804-001	16	8
15980804-001	16	17
15980804-001	17	9
15980804-001	17	18
15980804-001	28	10
15980804-001	29	9
15980804-001	30	9
15980804-001	31	10
15980804-001	32	8
15980804-001	33	8
15980804-001	34	9
15980804-001/002	35c	12
15980804-002	1	10
15980804-002	3	9
15980804-002	3	18
15980804-002	4	9
15980804-002	4	18
15980804-002	5	8
15980804-002	5	17
15980804-002	6	10
15980804-002	6	19

Part Number	Fig.	Item
15980804-002	7	9
15980804-002	7	18
15980804-002	8	9
15980804-002	8	18
15980804-002	9	9
15980804-002	9	18
15980804-002	10	8
15980804-002	10	17
15980804-002	11	10
15980804-002	11	20
15980804-002	12	9
15980804-002	12	20
15980804-002	13	9
15980804-002	13	19
15980804-002	14	10
15980804-002	14	20
15980804-002	15	8
15980804-002	15	18
15980804-002	16	8
15980804-002	16	17
15980804-002	17	9
15980804-002	17	18
15980804-002	28	10
15980804-002	29	9
15980804-002	30	9
15980804-002	31	10
15980804-002	32	8
15980804-002	33	8
15980804-002	34	9
15980805-001/002	35c	9
15980820-001	37a	1
15980820-002	37a	11
15980821-001	37d	1
15980821-002	37d	10

Part Number	Fig.	Item
17000016-001	1	3
17000016-001	6	3
17000016-001	11	3
17000016-001	18	1
17000016-001	28	3
17000016-002	1	3
17000016-002	6	3
17000016-002	11	3
17000016-002	18	1
17000016-002	28	3
17000017-001	2	3
17000017-001	7	3
17000017-001	12	3
17000017-001	19	1
17000017-001	29	3
17000017-002	2	3
17000017-002	7	3
17000017-002	12	3
17000017-002	19	1
17000017-002	29	3
17000018-001	3	3
17000018-001	8	3
17000018-001	13	3
17000018-001	20	1
17000018-001	30	3
17000018-002	3	3
17000018-002	8	3
17000018-002	13	3
17000018-002	20	1
17000018-002	30	3
17000019-001	4	2
17000019-001	14	3
17000019-001	21	1
17000019-001	31	3

Part Number	Fig.	Item
17000019-002	4	2
17000019-002	14	3
17000019-002	21	1
17000019-002	31	3
17000020-001	5	3
17000020-001	10	3
17000020-001	15	3
17000020-001	16	3
17000020-001	22	1
17000020-001	23	1
17000020-001	32	3
17000020-001	33	3
17000020-002	5	3
17000020-002	10	3
17000020-002	15	3
17000020-002	16	3
17000020-002	22	1
17000020-002	23	1
17000020-002	32	3
17000020-002	33	3
17000021-001	1	14
17000021-001	2	8
17000021-001	3	13
17000021-001	4	13
17000021-001	5	12
17000021-001	6	14
17000021-001	17	3
17000021-001	17	12
17000021-001	24	1
17000021-001	25	1
17000021-001	34	3
17000021-002	1	14
17000021-002	2	8
17000021-001	2	8

Part Number	Fig.	Item
17000021-002	3	13
17000021-002	4	13
17000021-002	5	12
17000021-002	6	14
17000021-002	17	3
17000021-002	17	13
17000021-002	24	1
17000021-002	25	1
17000021-002	34	3
17000022-001	7	13
17000022-001	8	13
17000022-001	9	13
17000022-001	10	12
17000022-001	16	11
17000022-001	26	1
17000022-002	7	13
17000022-002	8	13
17000022-002	9	13
17000022-002	10	13
17000022-002	16	12
17000022-002	26	1
17000023-001	11	14
17000023-001	12	13
17000023-001	13	13
17000023-001	14	14
17000023-001	15	11
17000023-001	27	1
17000023-002	11	14
17000023-002	12	14
17000023-002	13	13
17000023-002	14	14
17000023-002	15	12
17000023-002	27	1
17000110-001	1	4

Part Number	Fig.	Item
17000110-001	3	4
17000110-001	4	3
17000110-001	5	4
17000110-001	6	4
17000110-001	7	4
17000110-001	8	4
17000110-001	9	3
17000110-001	10	4
17000110-001	11	4
17000110-001	12	4
17000110-001	13	4
17000110-001	14	4
17000110-001	15	4
17000110-001	16	4
17000110-001	17	4
17000110-001	18	2
17000110-001	19	2
17000110-001	20	2
17000110-001	21	2
17000110-001	22	2
17000110-001	23	2
17000110-001	24	2
17000110-001	28	4
17000110-001	29	4
17000110-001	30	4
17000110-001	31	4
17000110-001	32	4
17000110-001	33	4
17000110-001	34	4
17000110-002	1	4
17000110-002	3	4
17000110-002	4	3
17000110-002	5	4
17000110-002	6	4

Part Number	Fig.	Item
17000110-002	7	4
17000110-002	8	4
17000110-002	9	3
17000110-002	10	4
17000110-002	11	4
17000110-002	12	4
17000110-002	13	4
17000110-002	14	4
17000110-002	15	4
17000110-002	16	4
17000110-002	17	4
17000110-002	18	2
17000110-002	19	2
17000110-002	20	2
17000110-002	21	2
17000110-002	22	2
17000110-002	23	2
17000110-002	24	2
17000110-002	28	4
17000110-002	29	4
17000110-002	30	4
17000110-002	31	4
17000110-002	32	4
17000110-002	33	4
17000110-002	34	4
17000120-001	3	14
17000120-001	4	14
17000120-001	5	13
17000120-001	6	15
17000120-001	7	14
17000120-001	8	14
17000120-001	9	14
17000120-001	10	13
17000120-001	11	15

Part Number	Fig.	Item
17000120-001	12	14
17000120-001	13	14
17000120-001	14	15
17000120-001	15	12
17000120-001	16	12
17000120-001	17	14
17000120-001	25	2
17000120-001	26	2
17000120-001	27	2
17000120-002	3	14
17000120-002	4	14
17000120-002	5	13
17000120-002	6	15
17000120-002	7	14
17000120-002	8	14
17000120-002	9	14
17000120-002	10	14
17000120-002	11	15
17000120-002	12	15
17000120-002	13	14
17000120-002	14	15
17000120-002	15	13
17000120-002	16	13
17000120-002	17	14
17000120-002	25	2
17000120-002	26	2
17000120-002	27	2
17000165-001	1	12
17000165-001	2	5
17000165-001	3	11
17000165-001	4	11
17000165-001	5	10
17000165-001	6	12
17000165-001	7	10

Part Number	Fig.	Item
17000165-001	8	10
17000165-001	9	10
17000165-001	10	9
17000165-001	11	11
17000165-001	12	10
17000165-001	13	10
17000165-001	14	11
17000165-001	15	9
17000165-001	16	9
17000165-001	17	10
17000165-001	28	12
17000165-001	29	11
17000165-001	30	11
17000165-001	31	12
17000165-001	32	10
17000165-001	33	10
17000165-001	34	11
17000165-002	1	12
17000165-002	2	5
17000165-002	3	11
17000165-002	4	11
17000165-002	5	10
17000165-002	6	12
17000165-002	7	10
17000165-002	8	10
17000165-002	9	10
17000165-002	10	9
17000165-002	11	11
17000165-002	12	10
17000165-002	13	10
17000165-002	14	11
17000165-002	15	9
17000165-002	16	9
17000165-002	17	10

Part Number	Fig.	Item
17000165-002	28	12
17000165-002	29	11
17000165-002	30	11
17000165-002	31	12
17000165-002	32	10
17000165-002	33	10
17000165-002	34	11
17000170-001	1	21
17000170-001	2	10
17000170-001	3	20
17000170-001	4	20
17000170-001	5	19
17000170-001	6	21
17000170-001	7	19
17000170-001	8	19
17000170-001	9	19
17000170-001	10	18
17000170-001	11	21
17000170-001	12	20
17000170-001	13	20
17000170-001	14	21
17000170-001	15	19
17000170-001	16	18
17000170-001	17	19
17000170-002	1	21
17000170-002	2	10
17000170-002	3	20
17000170-002	4	20
17000170-002	5	19
17000170-002	6	21
17000170-002	7	19
17000170-002	8	19
17000170-002	9	19
17000170-002	10	18

Part Number	Fig.	Item
17000170-002	11	21
17000170-002	12	21
17000170-002	13	20
17000170-002	14	21
17000170-002	15	19
17000170-002	16	18
17000170-002	17	19
17000220-001	1	15
17000220-002	1	15
17000224-001	1	13
17000224-001	2	6
17000224-001	3	12
17000224-001	4	12
17000224-001	5	11
17000224-001	6	13
17000224-001	7	11
17000224-001	8	11
17000224-001	9	11
17000224-001	10	10
17000224-001	11	12
17000224-001	12	11
17000224-001	13	11
17000224-001	14	12
17000224-001	15	10
17000224-001	16	10
17000224-001	17	11
17000224-002	1	13
17000224-002	2	7
17000224-002	3	12
17000224-002	4	12
17000224-002	5	11
17000224-002	6	13
17000224-002	7	11
17000224-002	8	11

Part Number	Fig.	Item
17000224-002	9	11
17000224-002	10	10
17000224-002	11	12
17000224-002	12	11
17000224-002	13	11
17000224-002	14	12
17000224-002	15	10
17000224-002	16	10
17000224-002	17	11
17000349	1	11
17000349	2	4
17000349	3	10
17000349	4	10
17000349	5	9
17000349	6	11
17000349	7	12
17000349	8	12
17000349	9	12
17000349	10	11
17000349	11	13
17000349	12	12
17000349	13	12
17000349	14	13
17000349	15	11
17000349	16	11
17000349	17	12
17000349	28	11
17000349	29	10
17000349	30	10
17000349	31	11
17000349	32	9
17000349	33	9
17000349	34	10
17000351	1	20

Part Number	Fig.	Item
17000351	2	9
17000351	3	19
17000351	4	19
17000351	5	18
17000351	6	20
17000351	7	20
17000351	8	20
17000351	9	20
17000351	10	19
17000351	11	22
17000351	12	22
17000351	13	21
17000351	14	22
17000351	15	20
17000351	16	19
17000351	17	20
17000654-001	3	5
17000654-001	4	4
17000654-001	8	5
17000654-001	9	4
17000654-001	11	16
17000654-001	12	15
17000654-001	13	5
17000654-001	13	15
17000654-001	14	5
17000654-001	14	16
17000654-001	15	14
17000654-001	16	5
17000654-001	20	3
17000654-001	21	3
17000654-001	23	3
17000654-001	27	3
17000654-001	30	5
17000654-001	31	5

Part Number	Fig.	Item
17000654-001	33	5
17000654-002	3	5
17000654-002	4	4
17000654-002	8	5
17000654-002	9	4
17000654-002	11	16
17000654-002	12	16
17000654-002	13	5
17000654-002	13	15
17000654-002	14	5
17000654-002	14	16
17000654-002	15	14
17000654-002	16	5
17000654-002	20	3
17000654-002	21	3
17000654-002	23	3
17000654-002	27	3
17000654-002	30	5
17000654-002	31	5
17000654-002	33	5
17000655-001	1	5
17000655-001	6	5
17000655-001	6	16
17000655-001	7	5
17000655-001	7	15
17000655-001	8	15
17000655-001	9	15
17000655-001	11	5
17000655-001	12	5
17000655-001	16	14
17000655-001	18	3
17000655-001	19	3
17000655-001	26	3
17000655-001	28	5

Part Number	Fig.	Item
17000655-001	29	5
17000655-002	1	5
17000655-002	6	5
17000655-002	6	16
17000655-002	7	5
17000655-002	7	15
17000655-002	8	15
17000655-002	9	15
17000655-002	10	14
17000655-002	11	5
17000655-002	12	5
17000655-002	16	14
17000655-002	18	3
17000655-002	19	3
17000655-002	26	3
17000655-002	28	5
17000655-002	29	5
17000656-001	1	6
17000656-001	4	5
17000656-001	6	6
17000656-001	9	5
17000656-001	11	6
17000656-001	13	16
17000656-001	14	6
17000656-001	14	17
17000656-001	15	15
17000656-001	17	5
17000656-001	18	4
17000656-001	21	4
17000656-001	24	3
17000656-001	27	4
17000656-001	28	6
17000656-001	31	6
17000656-001	34	5

Part Number	Fig.	Item
17000656-002	1	6
17000656-002	4	5
17000656-002	6	6
17000656-002	9	5
17000656-002	11	6
17000656-002	13	16
17000656-002	14	6
17000656-002	14	17
17000656-002	15	15
17000656-002	17	5
17000656-002	18	4
17000656-002	21	4
17000656-002	24	3
17000656-002	27	4
17000656-002	28	6
17000656-002	31	6
17000656-002	34	5
17000657-001	1	7
17000657-001	6	7
17000657-001	11	7
17000657-001	18	5
17000657-001	28	7
17000657-002	1	7
17000657-002	6	7
17000657-002	11	7
17000657-002	18	5
17000657-002	28	7
17000658-001	1	16
17000658-001	3	15
17000658-001	4	6
17000658-001	4	15
17000658-001	5	5
17000658-001	5	14
17000658-001	7	6

Part Number	Fig.	Item
17000658-001	9	6
17000658-001	10	5
17000658-001	11	17
17000658-001	12	6
17000658-001	12	16
17000658-001	13	6
17000658-001	14	7
17000658-001	15	5
17000658-001	17	15
17000658-001	19	4
17000658-001	21	5
17000658-001	22	3
17000658-001	25	3
17000658-001	29	6
17000658-001	31	7
17000658-001	32	5
17000658-002	1	16
17000658-002	3	15
17000658-002	4	6
17000658-002	4	15
17000658-002	5	5
17000658-002	5	14
17000658-002	7	6
17000658-002	9	6
17000658-002	10	5
17000658-002	11	17
17000658-002	12	6
17000658-002	12	17
17000658-002	13	6
17000658-002	14	7
17000658-002	15	5
17000658-002	17	15
17000658-002	19	4
17000658-002	21	5

Part Number	Fig.	Item
17000658-002	22	3
17000658-002	25	3
17000658-002	29	6
17000658-002	31	7
17000658-002	32	5
17000659-001	3	6
17000659-001	8	6
17000659-001	17	6
17000659-001	20	4
17000659-001	24	4
17000659-001	30	6
17000659-001	34	6
17000659-002	3	6
17000659-002	8	6
17000659-002	17	6
17000659-002	20	4
17000659-002	24	4
17000659-002	30	6
17000659-002	34	6
18000001-001	1	1
18000001-001	28	1
18000001-002	1	1
18000001-002	28	1
18000002-001	2	1
18000002-001	29	1
18000002-002	29	1
18000003-001	3	1
18000003-001	30	1
18000003-002	3	1
18000003-002	30	1
18000004-001	4	1
18000004-001	31	1
18000004-002	4	1
18000004-002	31	1

Part Number	Fig.	Item
18000005-001	5	1
18000005-001	32	1
18000005-002	5	1
18000005-002	32	1
18000006-001	6	1
18000006-001	33	1
18000006-002	6	1
18000006-002	33	1
18000007-001	7	1
18000007-001	34	1
18000007-002	7	1
18000007-002	34	1
18000008-001	8	1
18000008-002	8	1
18000009-001	9	1
18000009-002	9	1
18000010-001	10	1
18000010-002	10	1
18000011-001	11	1
18000011-002	11	1
18000012-001	12	1
18000012-002	12	1
18000013-001	13	1
18000013-002	13	1
18000014-001	14	1
18000014-002	14	1
18000015-001	15	1
18000015-002	15	1
18000016-001	16	1
18000016-002	16	1
18000017-001	17	1
18000017-002	17	1
18000100-001	1	2
18000100-001	2	2

Part Number	Fig.	Item
18000100-001	3	2
18000100-001	5	2
18000100-001	6	2
18000100-001	7	2
18000100-001	8	2
18000100-001	9	2
18000100-001	10	2
18000100-001	11	2
18000100-001	12	2
18000100-001	13	2
18000100-001	14	2
18000100-001	15	2
18000100-001	16	2
18000100-001	17	2
18000100-001	28	2
18000100-001	29	2
18000100-001	30	2
18000100-001	31	2
18000100-001	32	2
18000100-001	33	2
18000100-001	34	2
18000100-002	1	2
18000100-002	2	2
18000100-002	3	2
18000100-002	5	2
18000100-002	6	2
18000100-002	7	2
18000100-002	8	2
18000100-002	9	2
18000100-002	10	2
18000100-002	11	2
18000100-002	12	2
18000100-002	13	2
18000100-002	14	2

Part Number	Fig.	Item
18000100-002	15	2
18000100-002	16	2
18000100-002	17	2
18000100-002	28	2
18000100-002	29	2
18000100-002	30	2
18000100-002	31	2
18000100-002	32	2
18000100-002	33	2
18000100-002	34	2

END OF WORK PACKAGE

Boh Environmental, LLC

MANUFACTURER'S LIMITED WARRANTY TERMS

(BOH-QF-23 Rev. 1.03)

Boh Environmental, LLC (BOH) warrants that the Products it manufactures, including the Field Pack-Up (FPU[®]) System, Containerized Mission Systems, Module Kits, and Bare Base Equipment, shall be free from defects in materials and workmanship for a period of one year from date of purchase when normally used and operated by the Customer. Unused Product containing missing or defective components shall be returned, within the warranty period, with proof of purchase, to BOH with transportation charges prepaid. BOH, at its option, shall supply a replacement item(s) or refund the purchase price of the Product. BOH shall in its sole discretion determine whether to replace the defective item(s) with identical items, or with items of identical quality and providing identical performance and functional capabilities. BOH will determine, at its sole discretion, whether or not the claim is a valid warranty item. If so, BOH will pay costs (actual transportation plus handling charge) for shipping of the replacement item, when this option is selected.

This warranty is void if Products have been damaged by the Customer as the result of improper or unreasonable use, or other causes not arising out of defects in material or workmanship. The warranty is also void if the Product has at any time been stored or used other than in accordance with the directions set out in the literature relating to the Product (e.g., user/operation manuals). BOH makes no other warranty or representation concerning the Products except that each will meet the performance specifications set forth in the literature relating to the Product. There are no further warranties, including any warranty of merchantability or fitness for a particular purpose covering the Product.

BOH will, at its option, either (1) credit user in the amount paid for any Product which does not perform to these specifications, or (2) replace such Product, provided user so notifies BOH within twelve (12) months of the Products purchase date. BOH shall not be responsible for any consequential damages to user arising as a result of such performance. The Customer will return the item at their cost, if required. Boh may elect to have its representative inspect the item to validate the claim.

Other product components included in the fabrication of items purchased under contract (e.g., air conditioners and generators) that are not manufactured by Boh Environmental are warranted by their individual manufacturer. Copies of such warranties are supplied with the finished Product or are available through BOH.

Please contact BOH for other contract specific warranty terms

This page was intentionally left blank

THE METRIC SYSTEM AND EQUIVALENTS

Linear Measure

1 centimeter = 10 millimeters = .39 inch
1 decimeter = 10 centimeters = 3.94 inches
1 meter = 10 decimeters = 39.37 inches
1 decameter = 10 meters = 32.8 feet
1 hectometer = 10 decameters = 328.08 feet
1 kilometer = 10 hectometers = 3,280.8 feet

Weights

1 centigram = 10 milligrams = .15 grain
1 decigram = 10 centigrams = 1.54 grains
1 gram = 10 decigrams = .035 ounce
1 dekagram = 10 grams = .35 ounce
1 hectogram = 10 dekagrams = 3.52 ounces
1 kilogram = 10 hectograms = 2.2 pounds
1 quintal = 100 kilograms = 220.46 pounds
1 metric ton = 10 quintals = 1.1 short tons

Liquid Measure

1 centiliter = 10 milliliters = .34 fl. ounce
1 deciliter = 10 centiliters = 3.38 fl. ounces
1 liter = 10 deciliters = 33.81 fl. ounces
1 deciliter = 10 liters = 2.64 gallons
1 hectoliter = 10 deciliters = 26.42 gallons
1 kiloliter = 10 hectoliters = 264.18 gallons

Square Measure

1 sq. centimeter = 100 sq. millimeters = .155 sq. inch
1 sq. decimeter = 100 sq. centimeters = 15.5 sq. inches
1 sq. meter (centare) = 100 sq. decimeters = 10.76 sq. feet
1 sq. decameter (are) = 100 sq. meters = 1,076.4 sq. feet
1 sq. hectometer (hectare) = 100 sq. decameters = 2.47 acres
1 sq. kilometer = 100 sq. hectometers = .386 sq. mile

Cubic Measure

1 cu. centimeter = 1000 cu. millimeters = .06 cu. inch
1 cu. decimeter = 1000 cu. centimeters = 61.02 cu. inches
1 cu. meter = 1000 cu. decimeters = 35.31 feet

Approximate Conversion Factors

To change	To	Multiply by	To change	To	Multiply by
Inches	centimeters	2.540	ounce-inches	Newton-meters	0.007062
feet	meters	0.305	centimeters	inches	0.394
yards	meters	0.914	meters	feet	3.280
miles	kilometers	1.609	meters	yards	1.094
square inches	square centimeters	6.451	kilometers	miles	0.621
square feet	square meters	0.093	square centimeters	square inches	0.155
square yards	square meters	0.836	square meters	square feet	10.764
square miles	square kilometers	2.590	square meters	square yards	1.196
acres	square hectometers	0.405	square kilometers	square miles	0.386
cubic feet	cubic meters	0.028	square hectometers	acres	2.471
cubic yards	cubic meters	0.765	cubic meters	cubic feet	35.315
fluid ounces	milliliters	29.573	cubic meters	cubic yards	1.308
pints	liters	0.473	milliliters	fluid ounces	0.034
quarts	liters	0.946	liters	pints	2.113
gallons	liters	3.785	liters	quarts	1.057
ounces	grams	28.349	liters	gallons	0.264
pounds	kilograms	0.454	grams	ounces	0.035
short tons	metric tons	0.907	kilograms	pounds	2.205
pound-feet	Newton-meters	1.356	metric tons	short tons	1.102
pound-inches	Newton -meters	0.11296			

Temperature (Exact)

$\frac{5}{9} (\text{after subtracting } 32)$

_F Fahrenheit temperature Celsius temperature _C