

**FPU® SYSTEMS OPERATION MANUAL
BOH OFFICE MODULE
(INCLUDING REPAIR PARTS & SPECIAL TOOL LIST)
BOH FPU Field Pack-up Units**

CHAPTER 6

PARTS SUPPORTING INFORMATION

This page was intentionally left blank

PARTS SUPPORTING INFORMATION**FPU® SYSTEMS OPERATION MANUAL
BOH OFFICE MODULE
(INCLUDING REPAIR PARTS & SPECIAL TOOL LIST)
BOH FPU Field Pack-up Units****INTRODUCTION TO MAINTENANCE ALLOCATION CHART (MAC)**

INTRODUCTION**The BOH Environmental LLC recommended MAC**

This introduction provides a general explanation of all maintenance and repair functions authorized at various maintenance levels under the standard Army Maintenance System concept.

The MAC (WP 0027 00, immediately following the introduction) designates overall authority and responsibility for the performance of maintenance functions on the Office Module. The application of the maintenance functions to the Office Module shall be consistent with the capacities and capabilities of the designated maintenance levels, which are shown on the MAC in column (4) as:

Unit – includes two sub columns, C (operator/crew) and O (unit) maintenance.
Direct Support – includes an F sub column.
General Support – includes an H sub column.
Depot – includes a D sub column.

Maintenance Functions

Maintenance functions are limited to and defined as follows:

1. **Inspect:** To determine the serviceability of an item by comparing its physical and mechanical characteristics with established standards through examination (e.g., by sight, sound, or feel). This includes scheduled inspections.
2. **Test:** To verify serviceability by measuring the mechanical characteristics of an item and comparing those characteristics with prescribed standards on a scheduled basis, i.e., load testing of lift devices and hydrostatic testing of pressure hoses.
3. **Service:** Operations required periodically to keep an item in proper operating condition; e.g., to clean (includes decontaminate, when required), to preserve, to drain, to paint, or to replenish fuel, lubricants, chemical fluids, or gases.
4. **Adjust:** To maintain or regulate, within prescribed limits, by bringing into proper position, or by setting the operating characteristics to specific parameters.
5. **Align:** To adjust specified variable elements of an item to bring about optimum or desired performance.
6. **Calibrate:** To determine and cause corrections to be made or to be adjusted on instruments of test, measuring, and diagnostic equipment used in precision measurement. Consists of comparisons of two instruments, one of which is a certified standard of known accuracy, to detect and adjust any discrepancy in the accuracy of the instrument being compared.
7. **Remove/Install:** To remove and install the same item when required to perform service or other maintenance functions. Install may be the act of emplacing, seating, or fixing into position a spare, repair part, or module (component or assembly) in a manner to allow the proper functioning of an equipment or system.

8. Replace: To remove an unserviceable item and install a serviceable counterpart in its place. "Replace" is authorized by the MAC and assigned maintenance level is shown as the third position code of the Source, Maintenance and Recoverability (SMR) code.
9. Repair: The application of maintenance services, including fault location-Troubleshooting, removal/installation, disassembly/assembly procedures, and maintenance actions to identify troubles and restore serviceability to an item by correcting specific damage, fault, malfunction, or failure in a part, subassembly, module (component or assembly), end item, or system.

NOTE

The following definitions are applicable to the "REPAIR" maintenance functions of Service, Inspect, Test, Adjust, Align, Calibrate, and/or Replace:

Fault location-Troubleshooting – The process of investigating and detecting the cause of equipment malfunctioning; the act of isolating a fault within a system or Unit Under Test (UUT).

Disassembly/Assembly – The step-by-step breakdown (taking apart) of a spare/functional group coded item to the level of its least component, that is assigned an SMR code for the level of maintenance under consideration (i.e., identified as maintenance significant).

Actions – Welding, grinding, riveting, straightening, facing, machining, and/or resurfacing.

10. Overhaul: That maintenance effort (service/action) prescribed to restore an item to a completely serviceable/operational condition as required by maintenance standards in appropriate technical publications. Overhaul is normally the highest degree of maintenance performed by the Army. Overhaul does not normally return an item to like new condition.
11. Rebuild: Consists of those services/actions necessary for the restoration of unserviceable equipment to a like new condition in accordance with original manufacturing standards. Rebuild is the highest degree of materiel maintenance applied to Army equipment. The rebuild operation includes the act of returning to zero those age measurements (e.g., hours/miles) considered in classifying Army equipment/components.

Explanation of Columns in the MAC

Column (1) – Group Number. Column (1) lists Functional Group Code (FGC) numbers, the purpose of which is to identify maintenance significant components, assemblies, subassemblies, and modules with the Next Higher Assembly (NHA).

Column (2) – Component/Assembly. Column (2) contains the item names of components, assemblies, subassemblies, and modules for which maintenance is authorized.

Column (3) – Maintenance Function. Column (3) lists the functions to be performed on the item listed in column (2). (For a detailed explanation of these functions refer to "Maintenance Functions" outlined above).

Column (4) – Maintenance Level. Column (4) specifies each level of maintenance authorized to perform each function listed in column (3), by indicating work time required (expressed as man-hours in whole hours or decimals) in the appropriate sub column. This work time figure represents the active time required to perform that maintenance function at the indicated level of maintenance. If the number or complexity of the tasks within the listed maintenance function varies at different maintenance levels, appropriate work time figures are to be shown for each level. The work time figure represents the average time required to restore an item (assembly, subassembly, component, module, end item, or system) to a serviceable condition under typical field operating conditions. This time includes preparation time (including any necessary disassembly/assembly time), troubleshooting/fault location time, and quality assurance time in addition to the time required to perform the specific tasks identified for the maintenance functions authorized in the MAC. The symbol designations for the various maintenance levels are as follows:

- **C – Operator or crew maintenance**
- **O– Unit maintenance**
- **F – Direct Support maintenance**
- **L – Specialized repair activity (SRA)**
- **H – General support maintenance**
- **K – Commercial depot maintenance**

NOTE

The "L" maintenance level is not included in column (4) of the MAC. Functions to this level of maintenance are identified by a work time figure in the "H" column of column (4), and an associated reference code is used in the REMARKS column (6). This code is keyed to the remarks and the SRA complete repair application is explained there.

Column (5) – Tools and Equipment Reference Code. Column (5) specifies, by code, those common tool sets (not individual tools), common Test, Measurement and Diagnostic Equipment (TMDE), and special tools, special TMDE and special support equipment required to perform the designated function. When applicable, codes are keyed to the entries in the tools and test equipment table.

Column (6) – Remarks Code. When applicable, this column contains a letter code, in alphabetical order, which is keyed to the remarks table entries.

END OF WORK PACKAGE

This page was intentionally left blank

PARTS SUPPORTING INFORMATION

FPU® SYSTEMS OPERATION MANUAL
BOH OFFICE MODULE
(INCLUDING REPAIR PARTS & SPECIAL TOOL LIST)
 BOH FPU Field Pack-up Units

MAINTENANCE ALLOCATION CHART (MAC)

(1) Group Number	(2) Component/Assembly	(3) Maintenance Function	(4) Maintenance Level					(5) Tools and Equipment Ref Code	(6) Remarks
			Unit		Direct Support	General Support	Depot		
			C	O	F	H	D		
00	Office Module System								
01	Office Module Exterior								
0101	Door Assembly	INSPECT	0.5	0.5					
		SERVICE		0.2					
		REPLACE			1.5				
0102	Ground Lug Kit	INSPECT	0.5	0.5					
		SERVICE		0.2					
		REPLACE		1.5					
02	Interior Parts								
0201	Desk	INSPECT	0.5	0.5					
		SERVICE		0.2					
		REPLACE			1.5				

(1) Group Number	(2) Component/Assembly	(3) Maintenance Function	(4) Maintenance Level					(5) Tools and Equipment Ref Code	(6) Remarks
			Unit		Direct Support	General Support	Depot		
			C	O	F	H	D		
0202	File Cabinet	INSPECT	0.5	0.5					
		SERVICE		0.5					
		REPLACE		1					
0203	Upper Shelf	INSPECT	0.5	0.5					
		SERVICE		0.5					
		REPLACE			1				
0204	Storage Cabinet	INSPECT	0.5	0.5					
		SERVICE		0.5					
		REPLACE			1				
03	Roof Elevation Parts								
0301	Jack Assembly	INSPECT	0.2	0.2					
		SERVICE		0.2					
		REPLACE			1.5				
0302	Wall Lock Assembly	INSPECT	0.2	0.2					
		SERVICE		0.2					
		REPLACE			1.5				
04	Office Module Interior Electrical Components								

0401	Rear Wall Electrical	INSPECT	0.5	0.5				
		SERVICE			0.5			
		REPLACE				1		

(1)	(2)	(3)	(4)					(5)	(6)
Group Number	Component/Assembly	Maintenance Function	Maintenance Level					Tools and Equipment Ref Code	Remarks
			Unit		Direct Support	General Support	Depot		
			C	O	F	H	D		
0402	Desk Side Wall	INSPECT	0.5	0.5					
		SERVICE			0.5				
		REPLACE				1			
0403	Front Wall Electrical	INSPECT	0.5	0.5					
		SERVICE			0.2				
		REPLACE			2				
0404	HVAC	INSPECT	0.5	0.5					
		SERVICE			0.5				
		REPLACE				1			
END OF MAC									

END OF WORK PACKAGE

This page was intentionally left blank

PARTS SUPPORTING INFORMATION

FPU SYSTEMS OPERATION MANUAL (INCLUDING REPAIR PARTS & SPECIAL TOOL LIST) STANDARD AND SPECIALIZED FPU MODULES BOH FPU Field Pack-up Units

INTRODUCTION TO REPAIR PARTS & SPECIAL TOOL LIST

INTRODUCTION

SCOPE

This Repair Parts & Special Tools List (RPSTL) lists and authorizes spares and repair parts; special tools; special test, measurement, and diagnostic equipment (TMDE); and other special support equipment required for performance of Operator, Unit, and Direct Support maintenance of the Field Pack Up system (FPU SYSTEMS). It authorizes the requisitioning, issue, and disposition of spares, repair parts, and special tools as indicated by the Source, Maintenance, and Recoverability (SMR) codes.

GENERAL

In addition to the introduction work package, this RPSTL is divided into the following work packages:

1. **Repair Parts List Work Packages.** Work packages containing lists of spares and repair parts authorized by this RPSTL for use in the performance of maintenance. These work packages also include parts which must be removed for replacement of the authorized parts. Parts lists are composed of functional groups in ascending alphanumeric sequence, with the parts in each group listed in ascending figure and item number sequence. Sending units, brackets, filters, and bolts are listed with the component they mount on. Bulk materials are listed by item name in FIG. Repair parts kits are listed separately in their own functional group and work package. Repair parts for reparable special tools are also listed in a separate work package. Items listed are shown on the associated illustrations.
2. **Cross-Reference Indexes Work Packages.** There are two cross-reference index work packages in this RPSTL: the National Stock Number (NSN) Index work package and the Part Number (P/N) Index work package. The National Stock Number Index work package refers you to the figure and item number. The Part Number Index work package refers you to the figure and item number.

EXPLANATION OF COLUMNS IN THE REPAIR PARTS LIST

ITEM NO. (Column (1)). Indicates the number used to identify items called out in the illustration.
NSN (Column (2)). The NSN for the item is listed in this column.

CAGE (Column (3)). The Commercial and Government Entity Code (CAGEC) is a five-digit code which is used to identify the manufacturer, distributor, or Government agency/activity that supplies the item.

PART NO. (Column (4)). Indicates the primary number used by the manufacturer (individual, company, firm, corporation, or Government activity), which controls the design and characteristics of the item by means of its engineering drawings, specifications, standards, and inspection requirements to identify an item or range of items.

NOTE

When you use an NSN to requisition an item, the item you receive may have a different P/N from the number listed.

DESCRIPTION (Column (5)). This column includes the following information:

The ITEM/Assembly Progression (.Item or Assembly, ..Next Lower Item, ...Next Lower Item)

1. The federal item name, and when required a minimum description to identify the item.
2. P/Ns of bulk materials are referenced in this column in the line entry to be manufactured or fabricated.
3. Hardness Critical Item (HCI). A support item that provides the equipment with special protection from electromagnetic pulse (EMP) damage during a nuclear attack.
4. The statement END OF FIGURE appears just below the last item description in column (6) for a given figure in both the repair parts list and special tools list work packages.

QTY (Column (6)). The QTY (quantity per figure) column indicates the quantity of the item used in the breakout shown on the illustration/figure, which is prepared for a functional group, sub-functional group, or an assembly. A "AR (as required)" appearing in this column instead of a quantity indicates that the quantity is variable and quantity may change from application to application.

EXPLANATION OF CROSS-REFERENCE INDEX WORK PACKAGES FORMAT AND COLUMNS.

1. National Stock Number (NSN) Index Work Package.

STOCK NUMBER Column. This column lists the NSN in National Item Identification Number (NIIN) sequence. The NIIN consists of the last nine digits of the NSN.

NSN
(e.g., 5385-01-574-1476)

When using this column to locate an item, ignore the first four digits of the NSN. However, the complete NSN should be used when ordering items by stock number.

FIG. Column. This column lists the number of the figure where the item is identified/located. The figures are in numerical order in the repair parts list and special tools list work packages.

ITEM Column. The item number identifies the item associated with the figure listed in the adjacent FIG. Column. This item is also identified by the NSN listed on the same line.

2. **Part Number (P/N) Index Work Package.** P/Ns in this index are listed in ascending alphanumeric sequence (vertical AIDS of letter and number combinations which places the first letter or digit of each group in order A through Z, followed by the numbers 0 through 9 and each following letter or digit in like order).

PART NUMBER Column. Indicates the P/N assigned to the item.

FIG. Column. This column lists the number of the figure where the item is identified/located in the repair parts list and special tools list work packages.

ITEM Column. The item number is the number assigned to the item as it appears in the figure referenced in the adjacent figure number column.

HOW TO LOCATE REPAIR PARTS

A. When NSNs or P/Ns Are Not Known.

1. Using the table of contents, determine the assembly group to which the item belongs. This is necessary since figures are prepared for assembly groups and subassembly groups, and lists are divided into the same groups.
2. Find the figure covering the functional group or the sub functional group to which the item belongs.
3. Identify the item on the figure and note the number(s).
4. Look in the repair parts list work packages for the figure and item numbers. The NSNs and part numbers are on the same line as the associated item numbers.

B. When NSN Is Known.

1. If you have the NSN, look in the STOCK NUMBER column of the NSN index work package. The NSN is arranged in NIIN sequence. Note the figure and item number next to the NSN.
2. Turn to the figure and locate the item number. Verify that the item is the one you are looking for.

C. When the P/N Is Known.

1. If you have the P/N and not the NSN, look in the PART NUMBER column of the P/N index work package. Identify the figure and item number.
2. Look up the item in the figure of the applicable repair parts list work package.

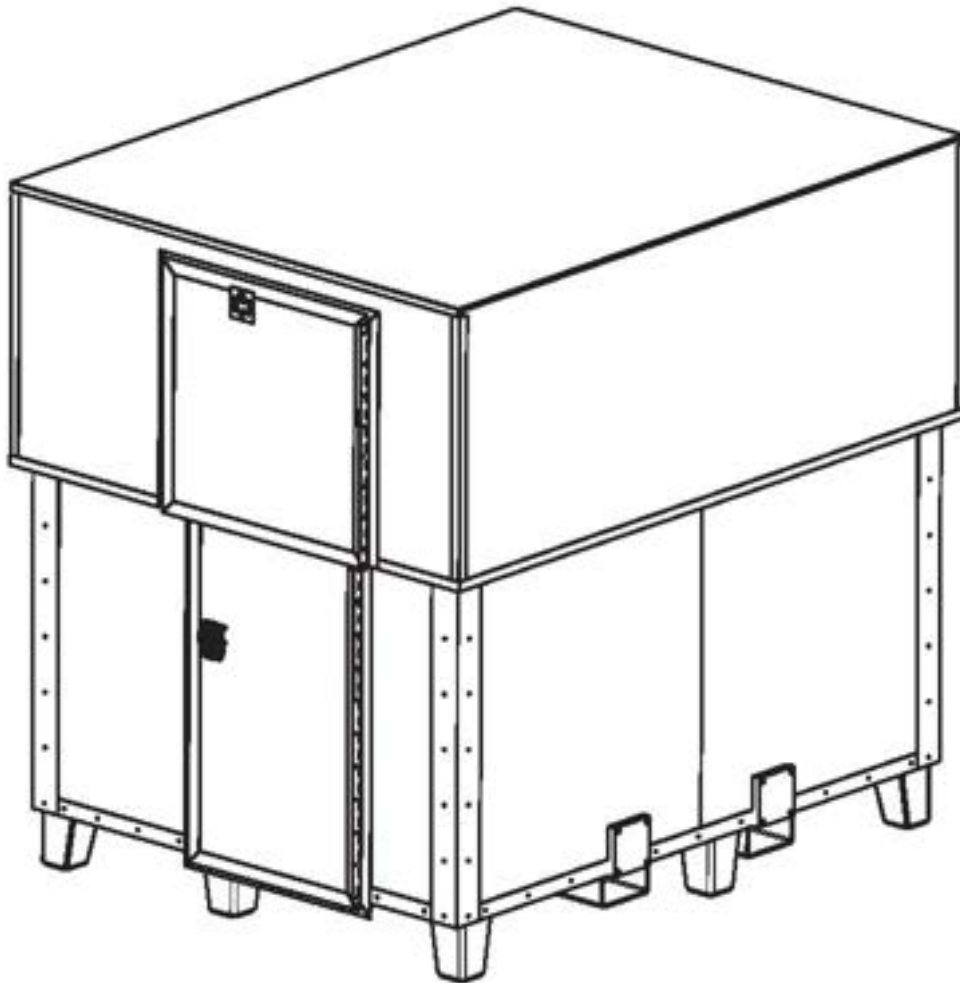
END OF WORK PACKAGE

This page was intentionally left blank

PARTS SUPPORTING INFORMATION

FPU® SYSTEMS OPERATION MANUAL
BOH OFFICE MODULE
(INCLUDING REPAIR PARTS & SPECIAL TOOL LIST)
BOH FPU Field Pack-up Units

OFFICE MODULE EXTERIOR REPAIR PARTS



OFFICE MODULE

FIGURES 01 TO 04

OFFICE MODULE

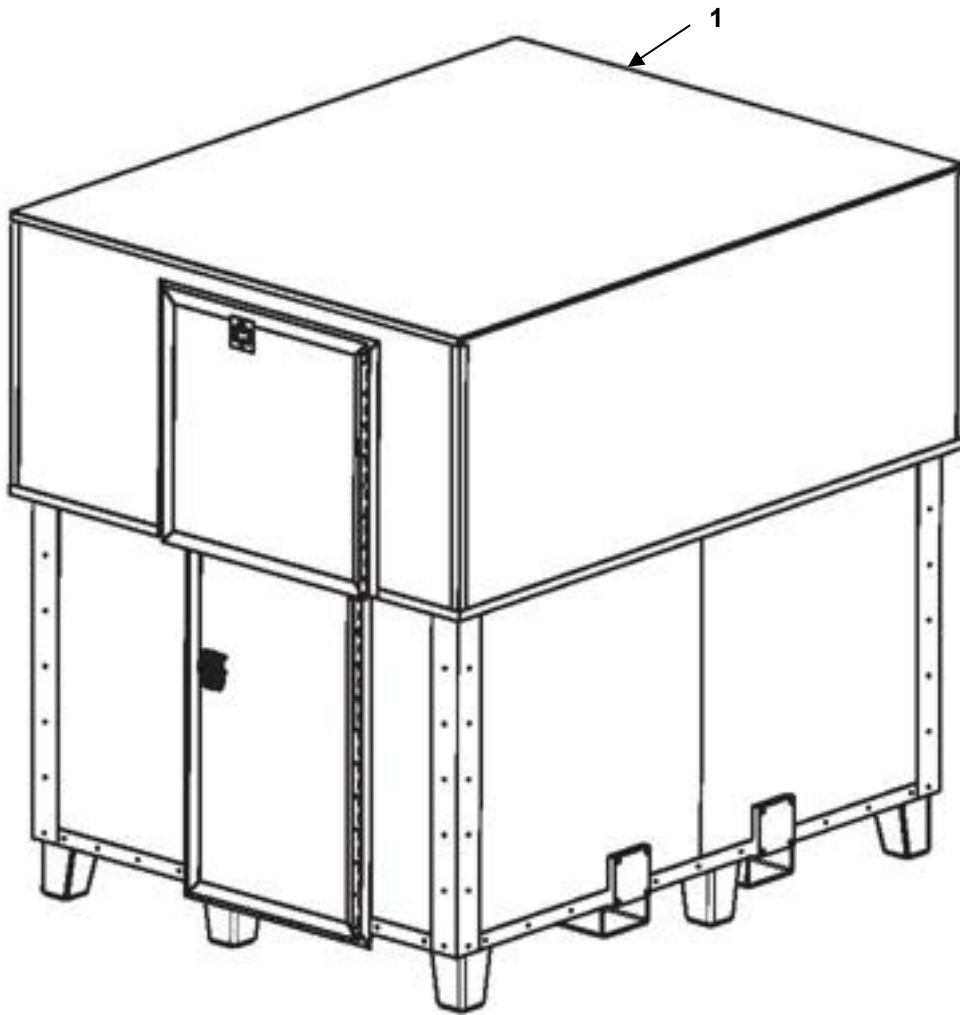


FIGURE 01

OFFICE MODULE

ITEM	NSN	CAGE	PART NO.	DESCRIPTION	QTY
				GROUP 01 FIGURE 01 OFFICE MODULE	
1	8145-01-478-3374	1NSG3	15500201-001	.OFFICE MODULE - GREEN	1
1	8145-01-478-3374	1NSG3	15500201-002	.OFFICE MODULE - TAN	1
END OF FIGURE 01					

LOWER DOOR ASSEMBLY

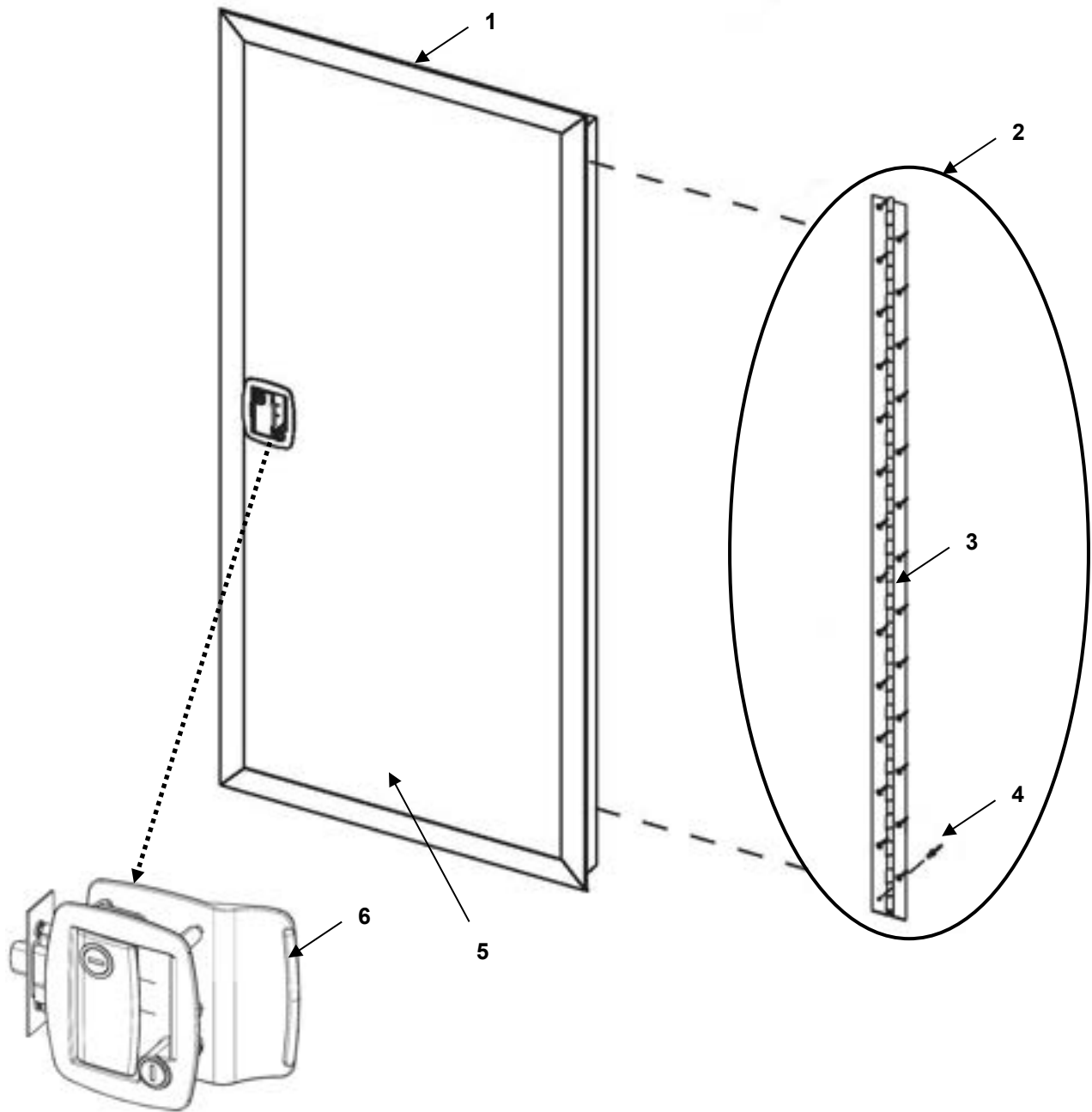


FIGURE 02

LOWER DOOR ASSEMBLY

ITEM	NSN	CAGE	PART NO.	DESCRIPTION	QTY
				GROUP 0101 FIGURE 02 LOWER DOOR ASSEMBLY	
1	Not Assigned	1NSG3	15988676-001	.LOWER DOOR ASSEMBLY - GREEN	1
1	Not Assigned	1NSG3	15988676-002	.LOWER DOOR ASSEMBLY - TAN	1
2	Not Assigned	1NSG3	15988284	..LOWER DOOR HINGE W/ MTG. HDW.	1
3	Not Assigned	NA	NA	...LOWER DOOR HINGE	1
4	Not Assigned	NA	NA	...POP RIVET - 3/16 X 1/4 SB64	27
5	Not Assigned	NA	NA	..LOWER DOOR	1
6	Not Assigned	1NSG3	15100323	..LOWER DOOR HANDLE ASSEMBLY	1
END OF FIGURE 02					

UPPER DOOR ASSEMBLY

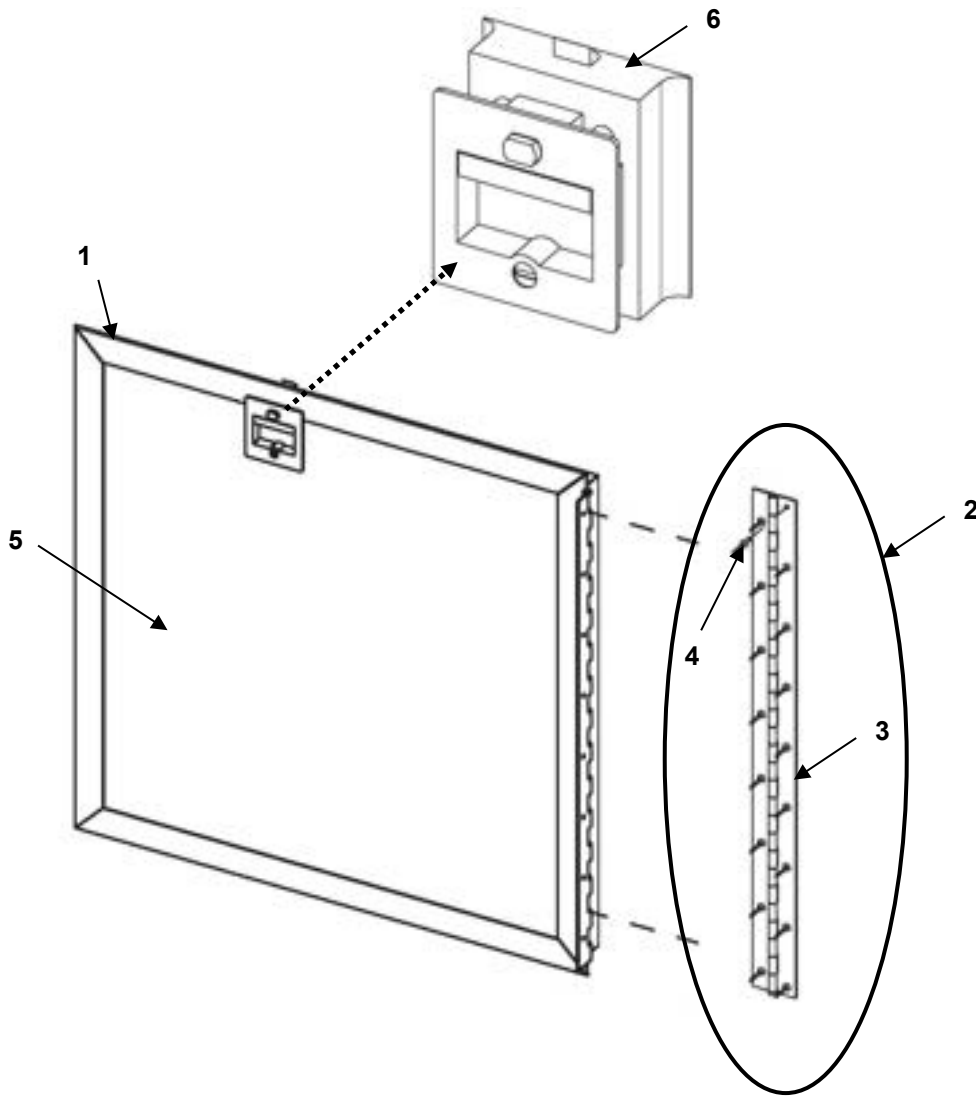


FIGURE 03

UPPER DOOR ASSEMBLY

ITEM	NSN	CAGE	PART NO.	DESCRIPTION	QTY
				GROUP 0101 FIGURE 03 UPPER DOOR ASSEMBLY	
1	Not Assigned	1NSG3	15988677-001	.UPPER DOOR ASSEMBLY - GREEN	1
1	Not Assigned	1NSG3	15988677-002	.UPPER DOOR ASSEMBLY - TAN	1
2	Not Assigned	1NSG3	15988283	..UPPER DOOR HINGE W/ MTG. HDW.	1
3	Not Assigned	NA	NA	...UPPER DOOR HINGE	1
4	Not Assigned	NA	NA	...POP RIVET - 3/16 X 1/4 SB64	17
5	Not Assigned	NA	NA	..UPPER DOOR	1
6	Not Assigned	1NSG3	15100318	..UPPER DOOR HANDLE ASSEMBLY	1
END OF FIGURE 03					

GROUND LUG

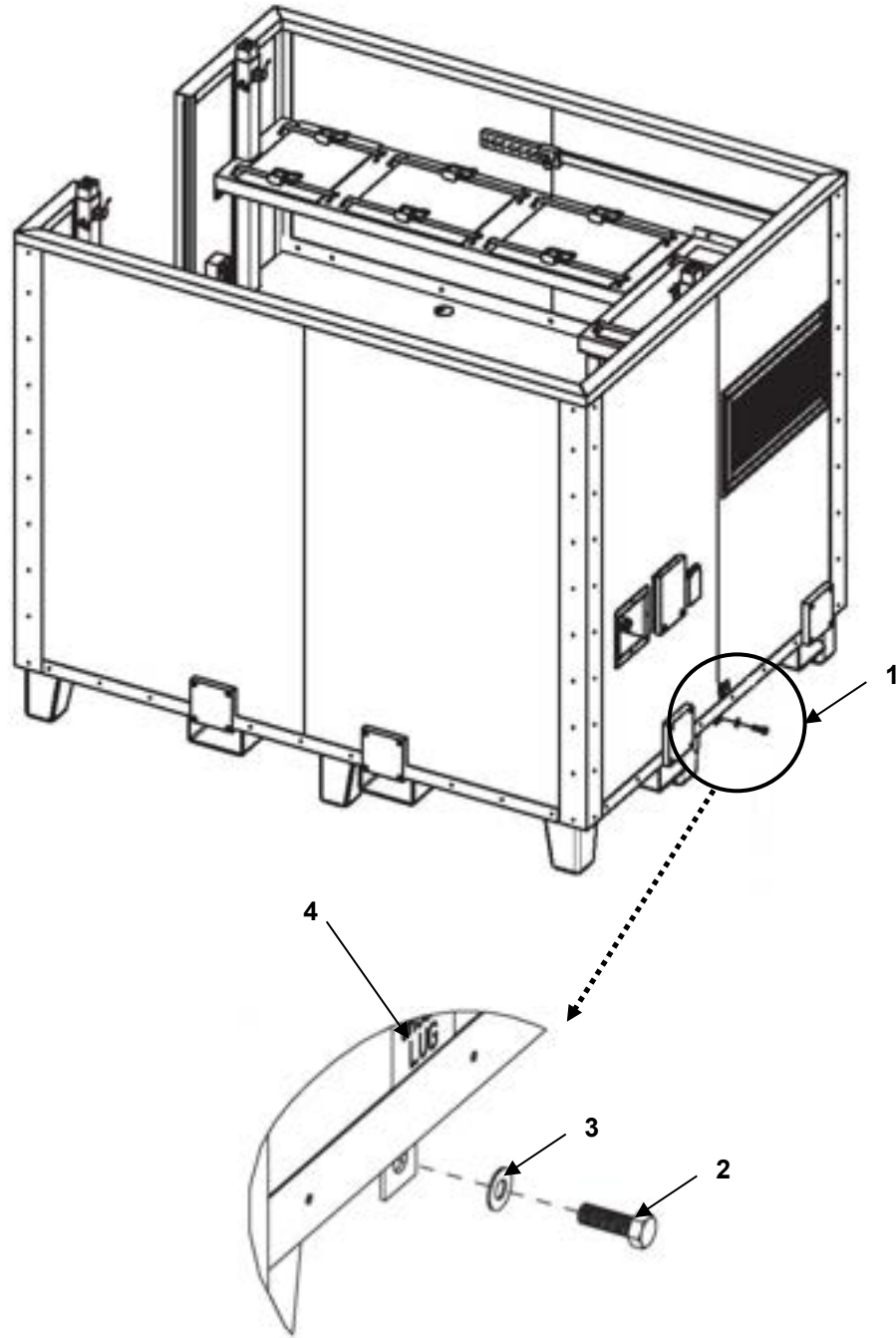


FIGURE 04

GROUND LUG

ITEM	NSN	CAGE	PART NO.	DESCRIPTION	QTY
				GROUP 0102 FIGURE 04 GROUND LUG KIT	
1	Not Assigned	1NSG3	15981863-001	.GROUND LUG KIT - GREEN	1
1	Not Assigned	1NSG3	15981863-002	.GROUND LUG KIT - TAN	1
2	Not Assigned	NA	NA	..BOLT, HHCS, BRASS, 1/2" X 1-1/2"	1
3	Not Assigned	NA	NA	..WASHER- FLAT, BRASS, 1/2"	1
4	Not Assigned	1NSG3	15200430	.GROUND LUG DECAL	1
END OF FIGURE 04					

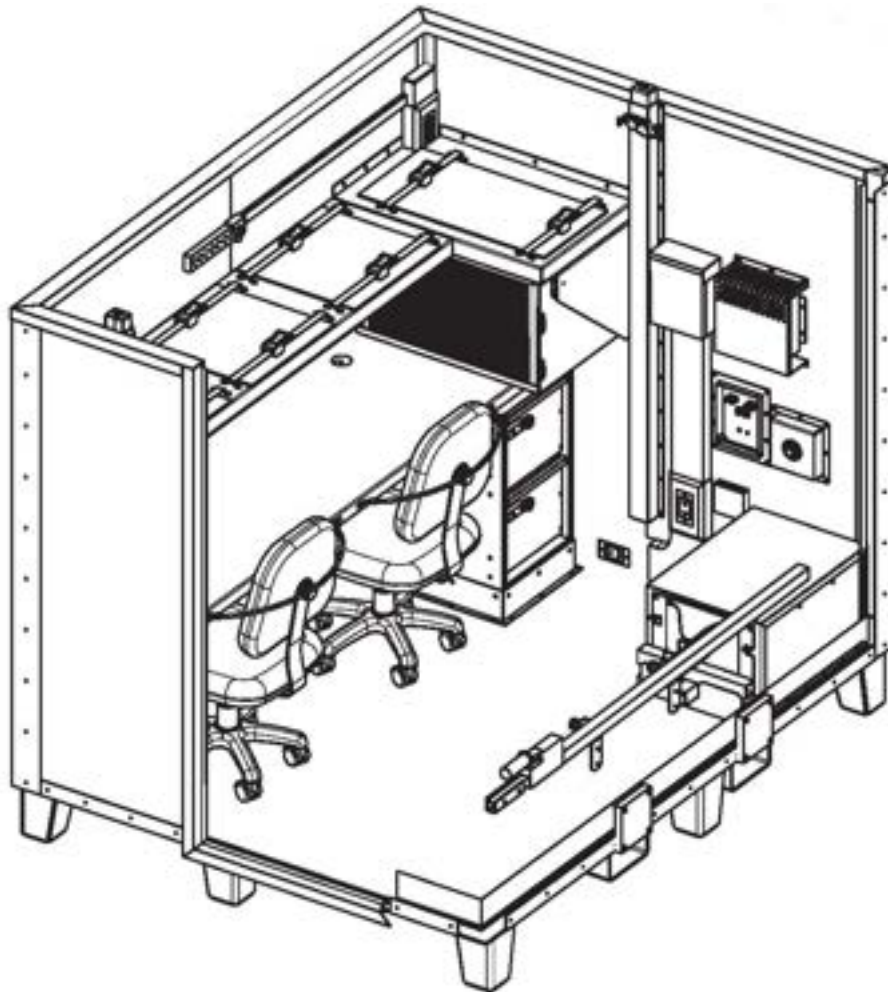
END OF WORK PACKAGE

This page was intentionally left blank

PARTS SUPPORTING INFORMATION

**FPU® SYSTEMS OPERATION MANUAL
BOH OFFICE MODULE
(INCLUDING REPAIR PARTS & SPECIAL TOOL LIST)
BOH FPU Field Pack-up Units**

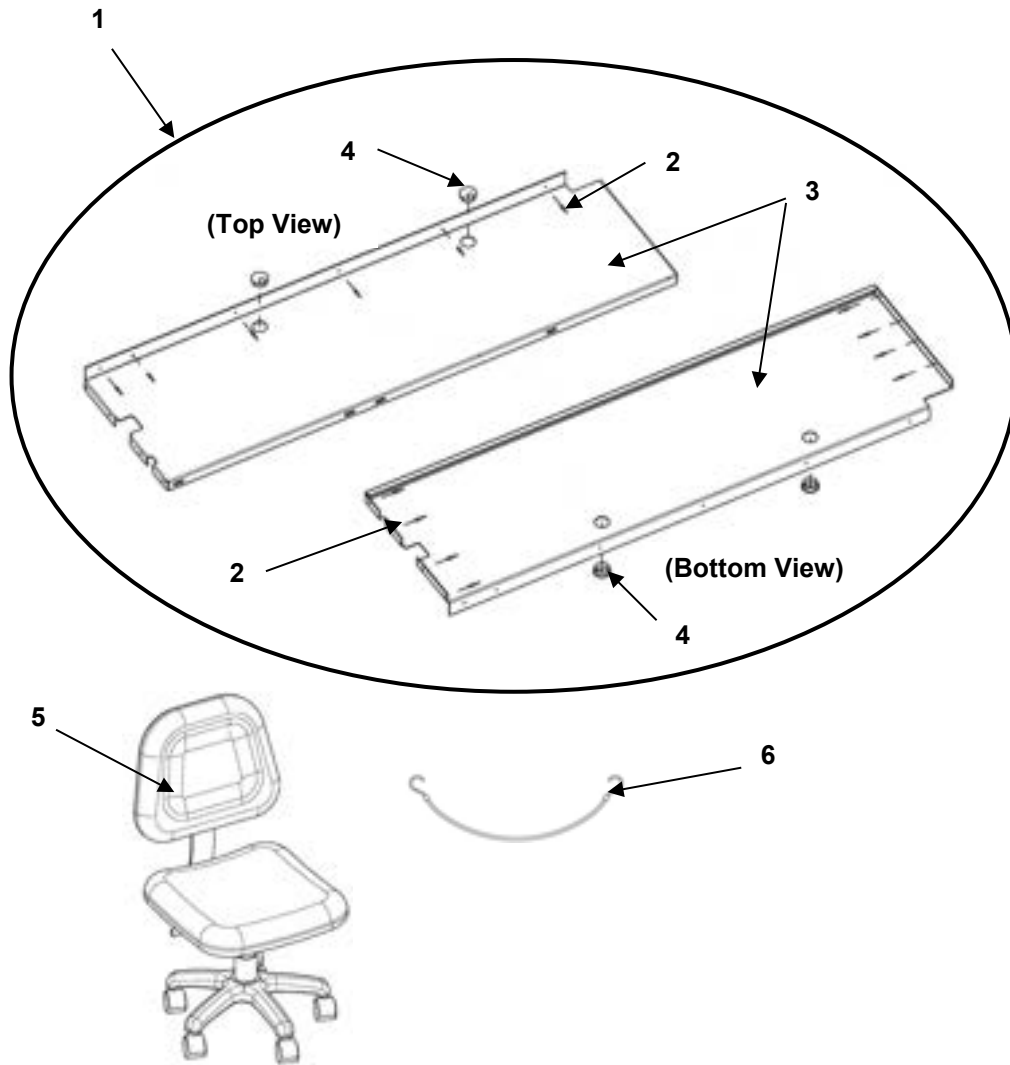
OFFICE MODULE INTERIOR REPAIR PARTS



INTERIOR PARTS

FIGURES 05 TO 10

DESK PARTS

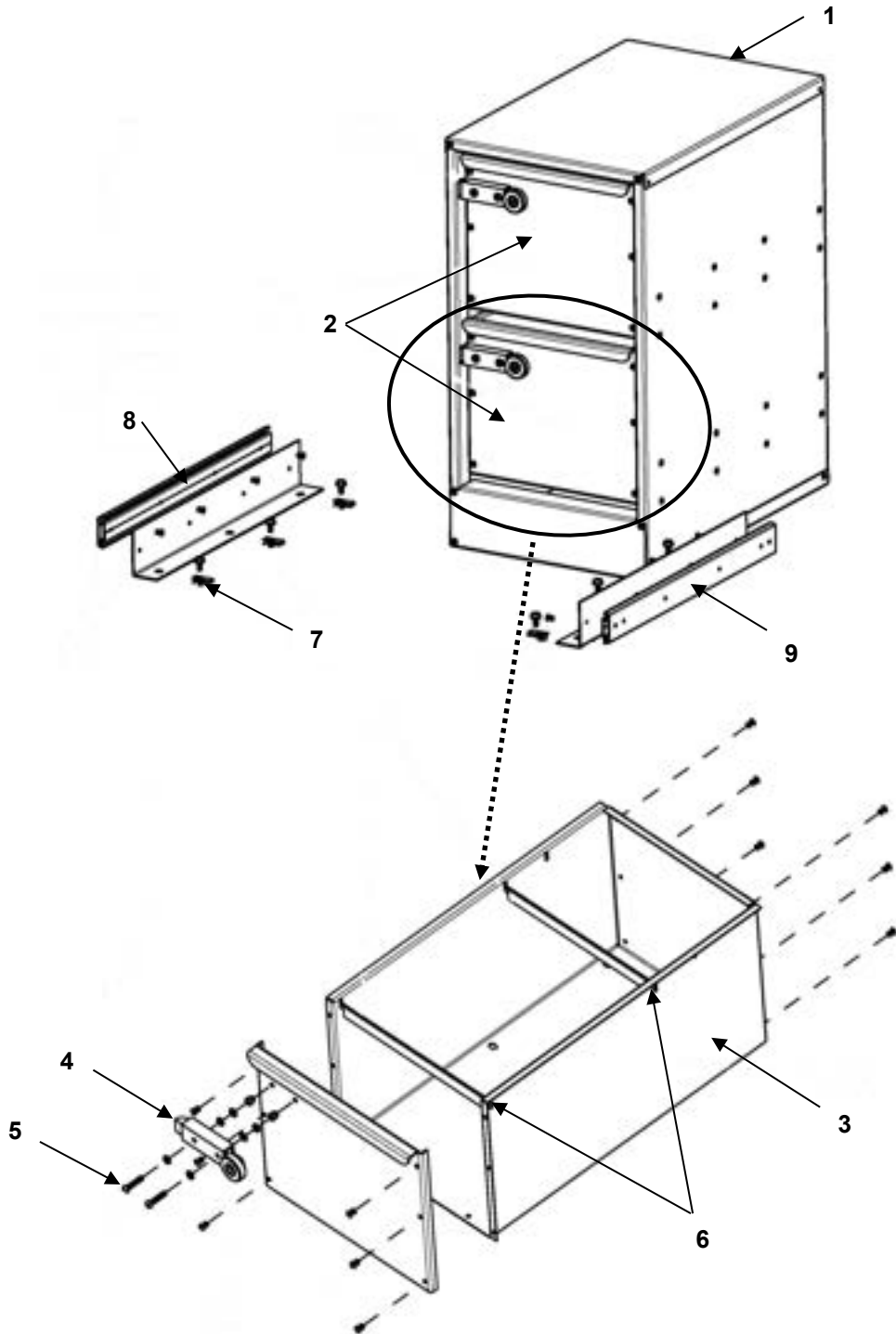


DESK PARTS

FIGURE 05

ITEM	NSN	CAGE	PART NO.	DESCRIPTION	QTY
				GROUP 0201 FIGURE 05 DESK PARTS	
1	Not Assigned	1NSG3	15988667	.DESK ASSEMBLY	1
2	Not Assigned	NA	NA	..POP RIVET - 3/16 x 1/4 SB64	14
3	Not Assigned	1NSG3	16100126	..OFFICE MODULE DESK TOP	1
4	Not Assigned	1NSG3	83160532	..WIRE MANAGEMENT GROMMET	2
5	Not Assigned	1NSG3	91020102	.SWIVEL DESK CHAIR	2
6	Not Assigned	1NSG3	46140142	.ELASTIC CHAIR RESTRAINT	2
END OF FIGURE 05					

FILE CABINET

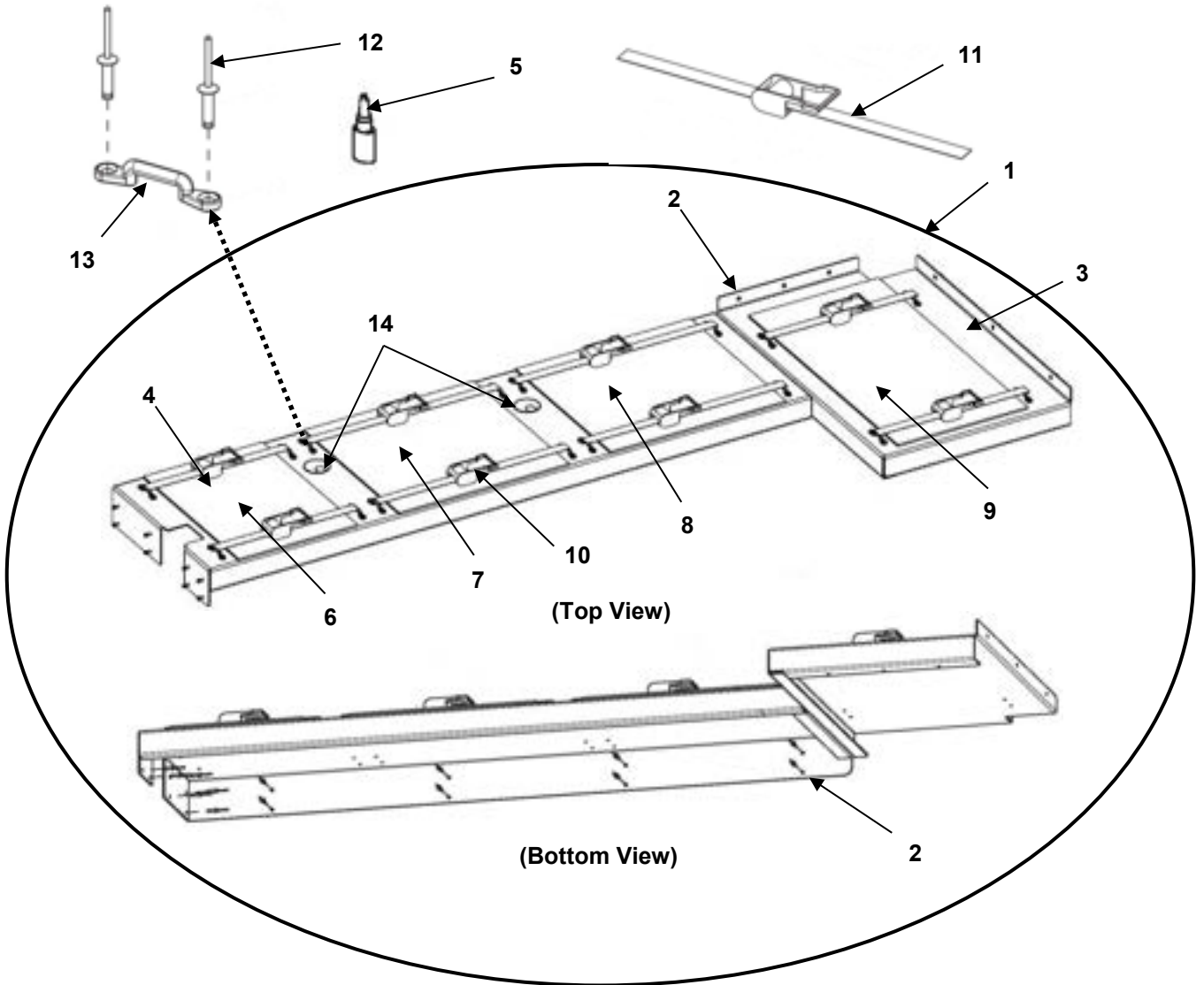


FILE CABINET

Figure 06

ITEM	NSN	CAGE	PART NO.	DESCRIPTION	QTY
				GROUP 0202 FIGURE 06 FILE CABINET	
1	Not Assigned	1NSG3	16335600	.FILE CABINET ASSEMBLY	1
2	Not Assigned	1NSG3	15988506	..DRAWER ASSEMBLY KIT W/ HDW.	2
3	Not Assigned	NA	NA	...DRAWER BODY	1
4	Not Assigned	1NSG3	15988356	...SLAM LATCH ASSEMBLY W/ HDW.	1
5	Not Assigned	NA	NASLAM LATCH HARDWARE KIT	1
6	Not Assigned	NA	NA	...CROSSBAR	2
7	Not Assigned	1NSG3	15988354	...FILE CABINET DRAWER KIT W/ HDW.	2
8	Not Assigned	1NSG3	15988508	...DRAWER SLIDE ASSEMBLY KIT - LEFT	2
9	Not Assigned	1NSG3	15988507	...DRAWER SLIDE ASSEMBLY KIT - RIGHT	2
END OF FIGURE 06					

UPPER SHELF

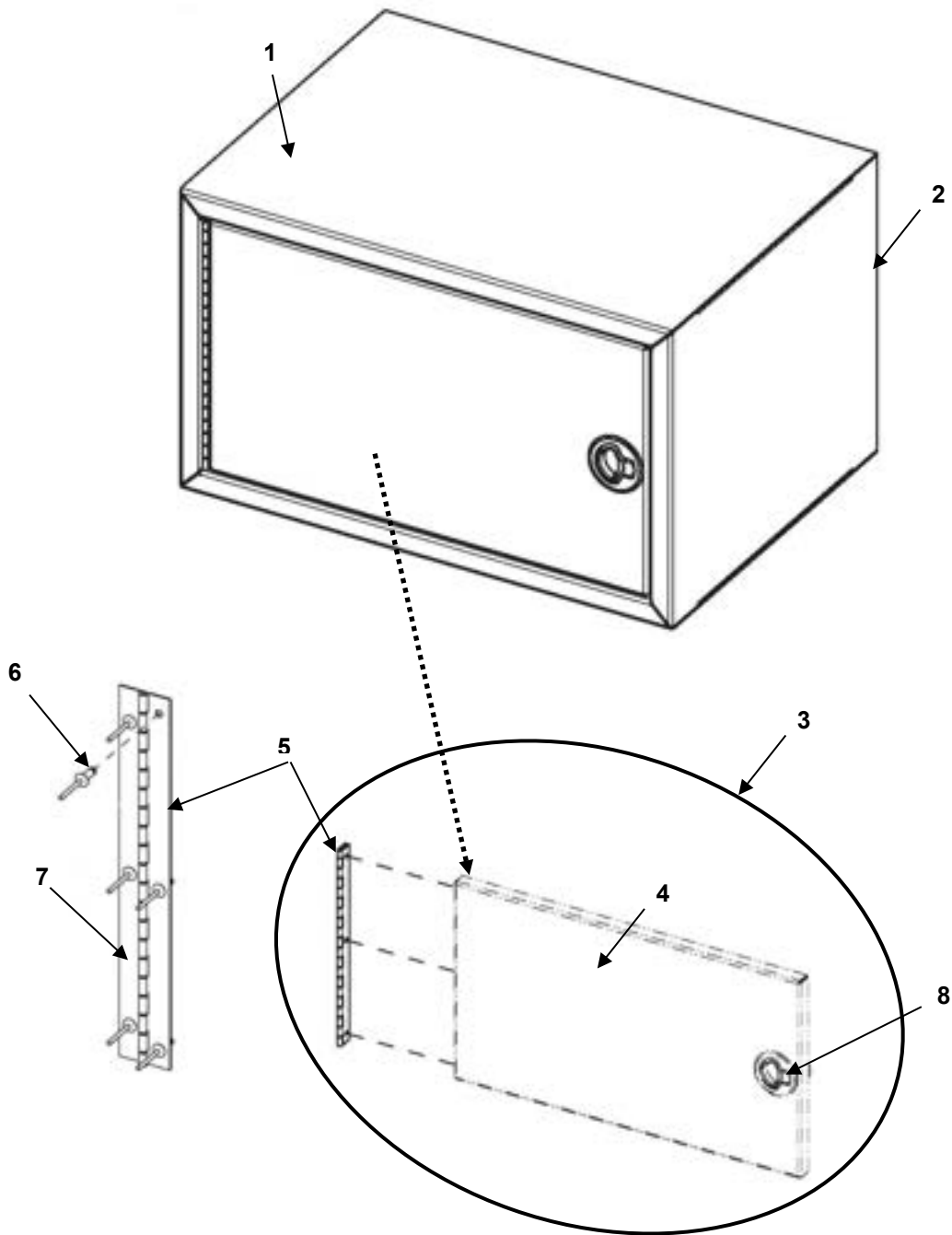


UPPER SHELF

FIGURE 07

ITEM	NSN	CAGE	PART NO.	DESCRIPTION	QTY
				GROUP 0203 FIGURE 07 UPPER SHELF	
1	Not Assigned	1NSG3	15988657	.UPPER SHELF ASSEMBLY W/ PADS, STRAPS AND MTG. HDW.	1
2	Not Assigned	NA	NA	..POP RIVET - 3/16 x 1/2 SB68	22
3	Not Assigned	1NSG3	15980169	..SHELF ASSEMBLY	1
4	Not Assigned	1NSG3	15988668	..RUBBER PAD KIT W/ ADHESIVE	1
5	Not Assigned	NA	NA	...TURBO FUSE ADHESIVE	1
6	Not Assigned	NA	NA	...SHELF PAD 1	1
7	Not Assigned	NA	NA	...SHELF PAD 2	1
8	Not Assigned	NA	NA	...SHELF PAD 3	1
9	Not Assigned	NA	NA	...SHELF PAD 4	1
10	Not Assigned	1NSG3	15988669	..RATCHET STRAP W/ MTG. HDW.	8
11	Not Assigned	1NSG3	15240155	...1" STRAP	1
12	Not Assigned	NA	NA	...POP RIVET - 3/16 X 1/2 SB68	4
13	Not Assigned	1NSG3	83201202	...FOOTMAN LOOP 1" (FOR WELDING)	2
14	Not Assigned	1NSG3	83160532	..WIRE MANAGEMENT GROMMET	2
END OF FIGURE 07					

STORAGE CABINET

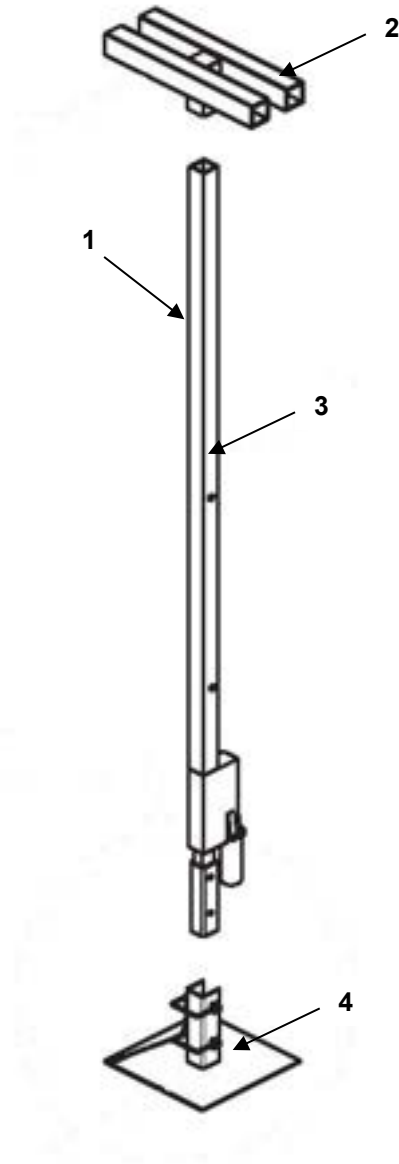


STORAGE CABINET

FIGURE 08

ITEM	NSN	CAGE	PART NO.	DESCRIPTION	QTY
				GROUP 0204 FIGURE 08 STORAGE CABINET	
1	Not Assigned	1NSG3	16100097	.OFFICE MODULE STORAGE CABINET	1
2	Not Assigned	NA	NA	..CABINET HULL	1
3	Not Assigned	NA	NA	..CABINET DOOR ASSEMBLY	1
4	Not Assigned	NA	NA	...CABINET DOOR	1
5	Not Assigned	1NSG3	15988358	...DOOR HINGE ASSEMBLY W/ MTG. HDW.	1
6	Not Assigned	NA	NAPOP RIVET - 3/16 X 1/4 - SB64	6
7	Not Assigned	NA	NADOOR HINGE	1
8	Not Assigned	1NSG3	74100402	...CABINET DOOR LATCH	1
END OF FIGURE 08					

ROOF ELEVATING JACK ASSEMBLY

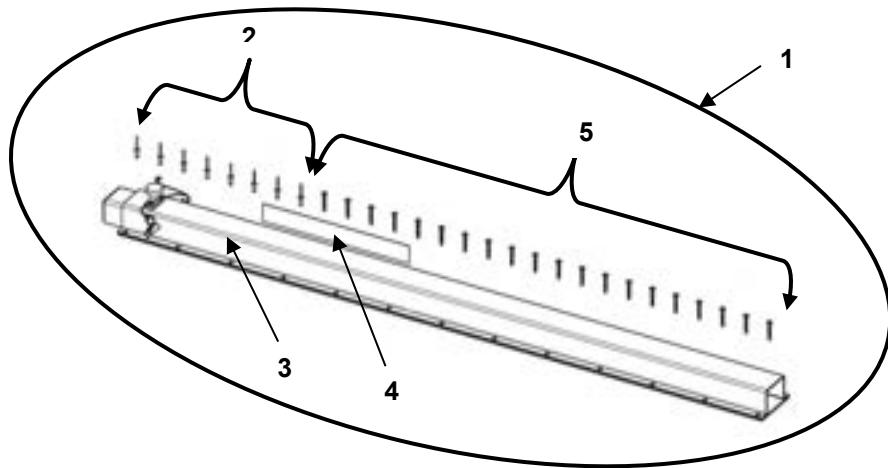
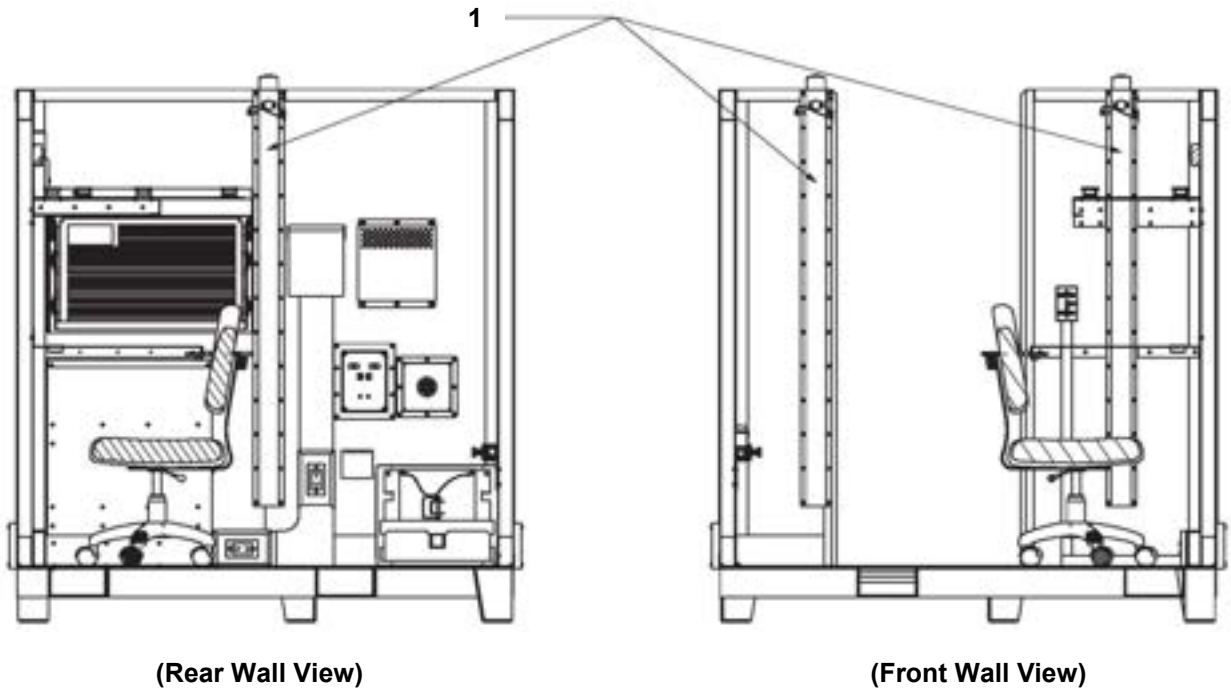


ROOF ELEVATING JACK ASSEMBLY

FIGURE 09

ITEM	NSN	CAGE	PART NO.	DESCRIPTION	QTY
				GROUP 0301 FIGURE 09 ROOF JACK ASSEMBLY	
1	Not Assigned	1NSG3	15988672	.KIT, ROOF JACK ASSEMBLY	1
2	Not Assigned	1NSG3	16100111	..JACK HAT ASSEMBLY	1
3	Not Assigned	1NSG3	16100228	..JACK SUB-ASSEMBLY	1
4	Not Assigned	1NSG3	16100229	..JACK BASE ASSEMBLY	1
END OF FIGURE 09					

ROOF ELEVATING LOCK ASSEMBLY



ROOF ELEVATING LOCK ASSEMBLY

FIGURE 10

ITEM	NSN	CAGE	PART NO.	DESCRIPTION	QTY
				GROUP 0302 FIGURE 10 ROOF ELEVATING LOCK ASSEMBLY	
1	Not Assigned	1NSG3	15988673	..ROOF ELEVATING LOCK ASSEMBLY W/ MTG. HDW.	3
2	Not Assigned	NA	NA	..POP RIVET 3/16 X 3/8 SB66	8
3	Not Assigned	1NSG3	16100130	..ROOF LOCK ASSEMBLY	1
4	Not Assigned	1NSG3	48010106	..TAPE - UHMW .030 X 1-1/2" WIDE "PSA"	1
5	Not Assigned	NA	NA	..SCREW-TEK P PH SS #10 X 1-1/2" S/S	20
END OF FIGURE 10					

END OF WORK PACKAGE

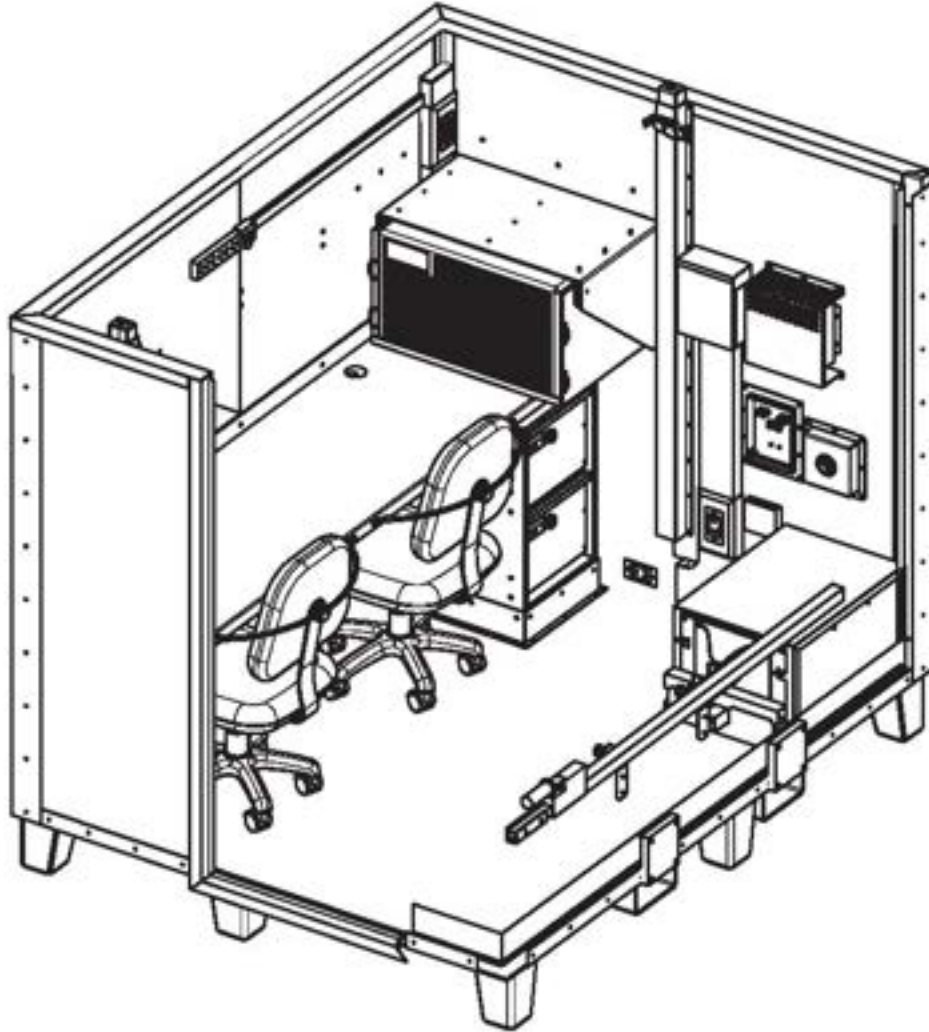
This page was intentionally left blank

PARTS SUPPORTING INFORMATION

**FPU® SYSTEMS OPERATION MANUAL
BOH OFFICE MODULE
(INCLUDING REPAIR PARTS & SPECIAL TOOL LIST)**

BOH FPU Field Pack-up Units

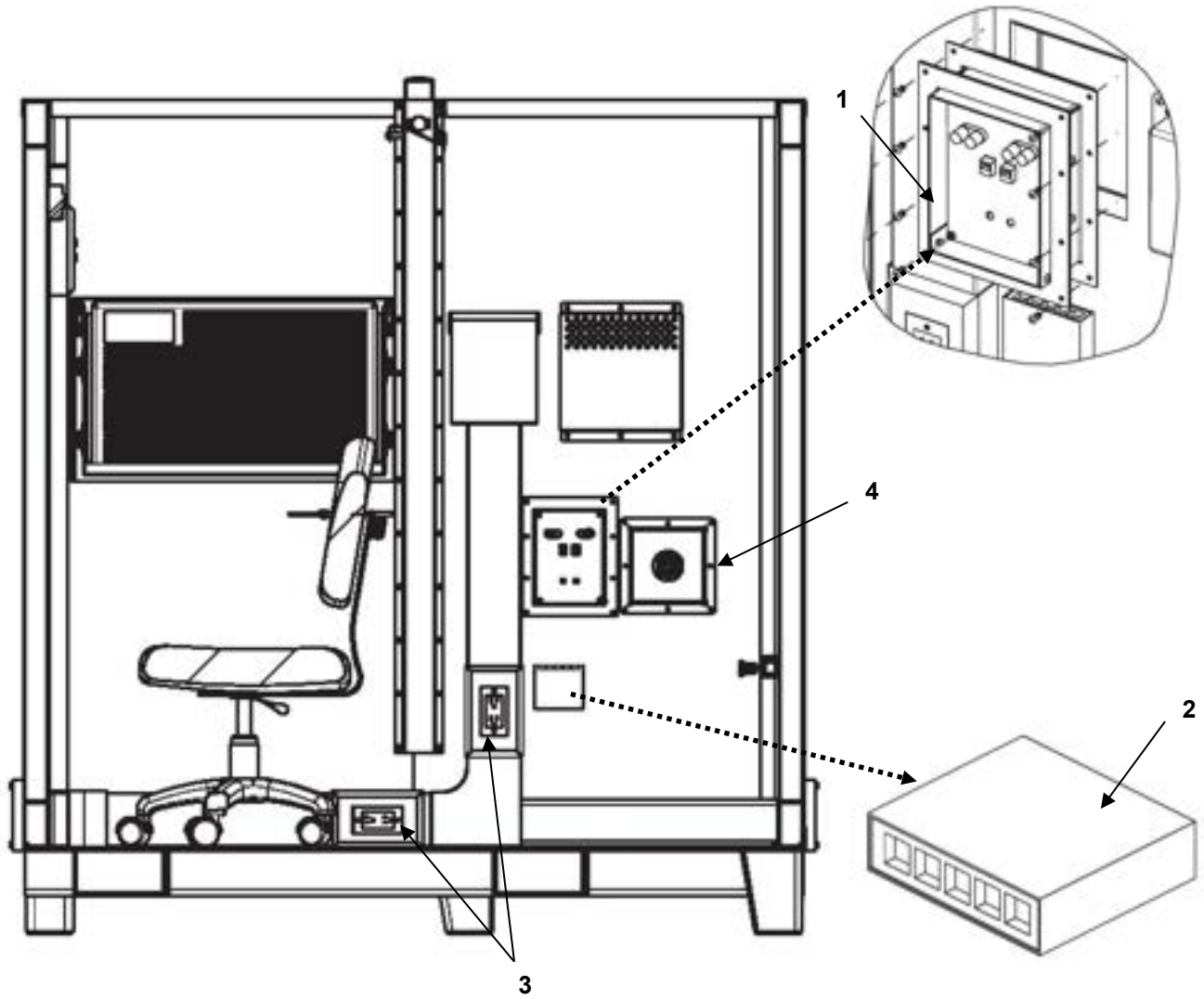
OFFICE MODULE INTERIOR ELECTRICAL COMPONENTS



INTERIOR ELECTRICAL COMPONENTS

FIGURES 11 TO 15

REAR WALL ELECTRICAL

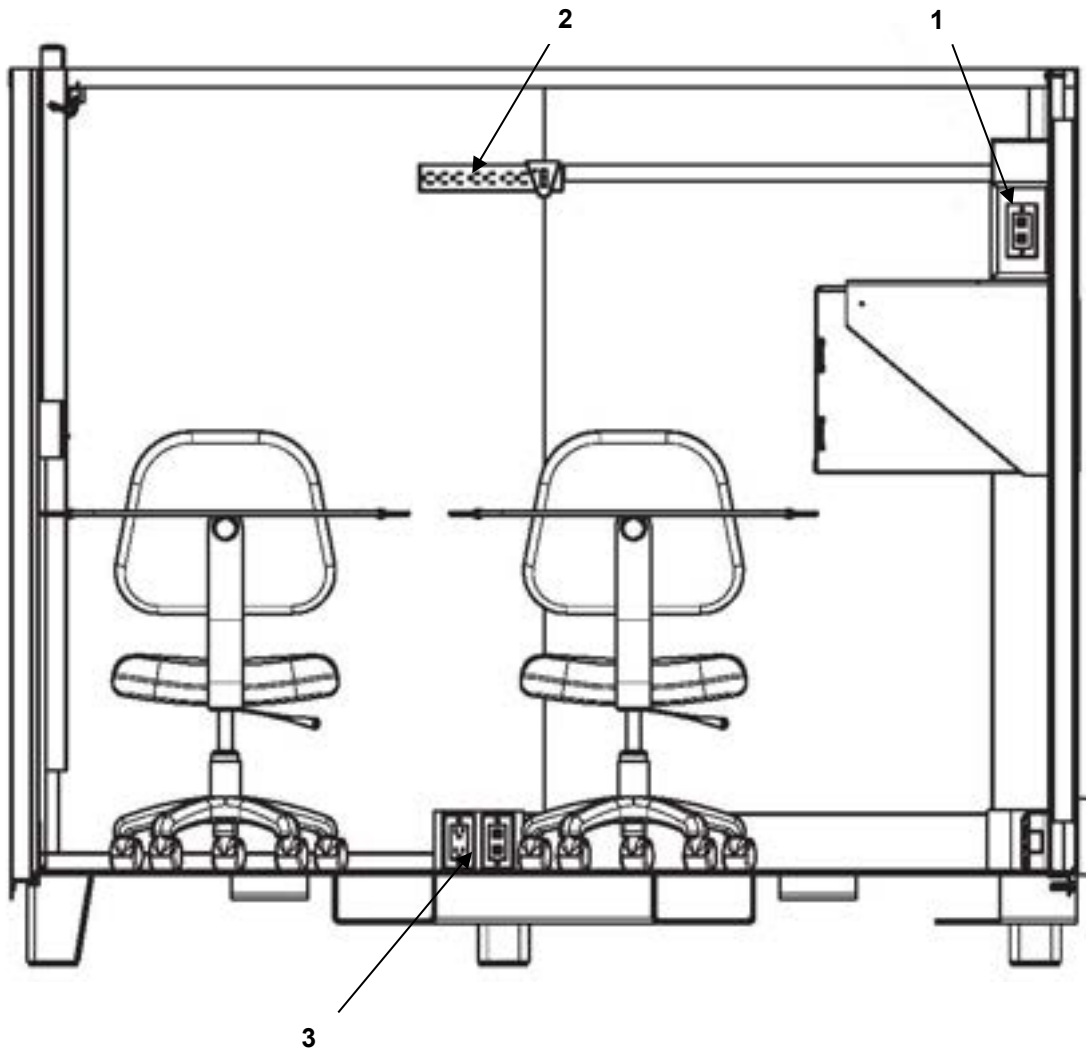


REAR WALL ELECTRICAL

FIGURE 11

ITEM	NSN	CAGE	PART NO.	DESCRIPTION	QTY
				GROUP 0401 FIGURE 11 REAR WALL ELECTRICAL	
1	Not Assigned	1NSG3	15980113-001	.COMM. BOX ASSEMBLY - GREEN	1
1	Not Assigned	1NSG3	15980113-002	.COMM. BOX ASSEMBLY - TAN	1
2	Not Assigned	1NSG3	15220422	.ETHERNET SWITCH, 5-PORT	1
3	Not Assigned	1NSG3	15988653	.SINGLE SURGE RECEPTACLE	2
4	Not Assigned	1NSG3	15988501	.CABLE PASS-THROUGH	1
END OF FIGURE 11					

DESK SIDE WALL ELECTRICAL

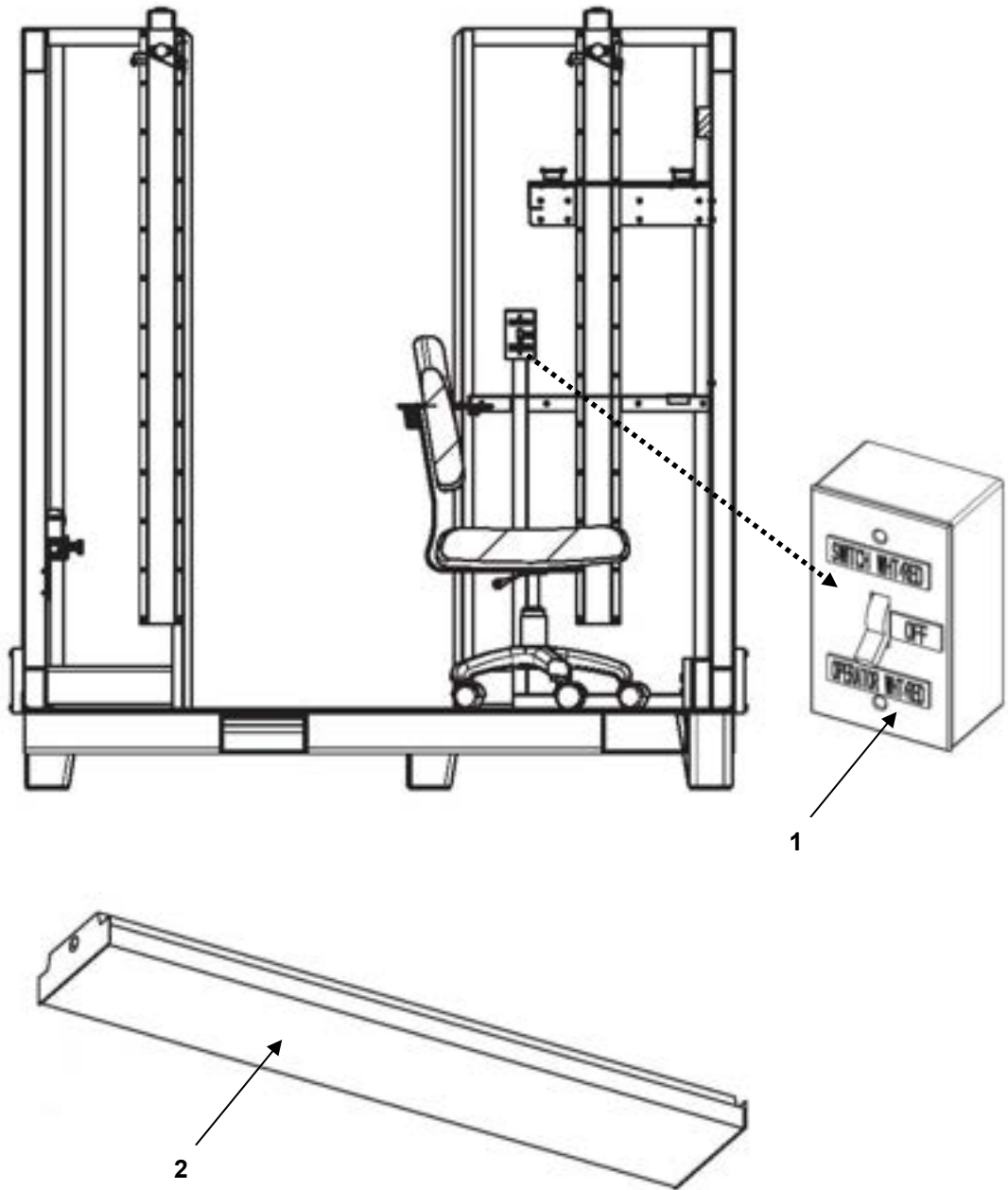


DESK SIDE WALL ELECTRICAL

FIGURE 12

ITEM	NSN	CAGE	PART NO.	DESCRIPTION	QTY
				GROUP 0402 FIGURE 12 DESK SIDE WALL ELECTRICAL	
1	Not Assigned	1NSG3	15988650	.CAT 5 COMM OUTLET ASSEMBLY	1
2	Not Assigned	1NSG3	15988479	.7 OUTLET SURGE STRIP	1
3	Not Assigned	1NSG3	15988654	.120V RECEPTACLE & CAT 3 JACK	1
END OF FIGURE 12					

FRONT WALL ELECTRICAL

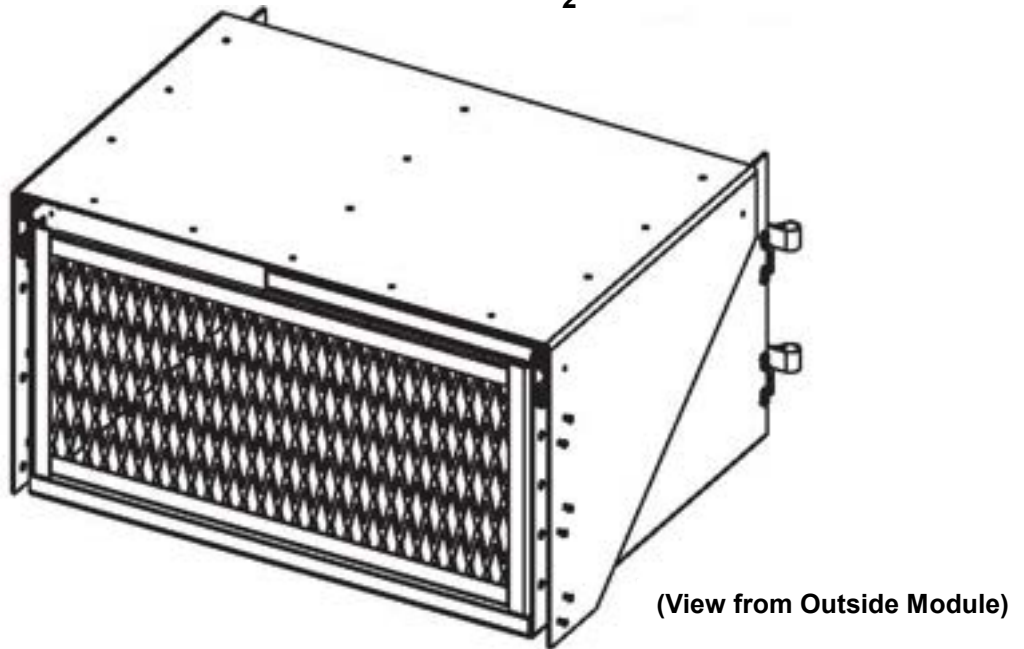
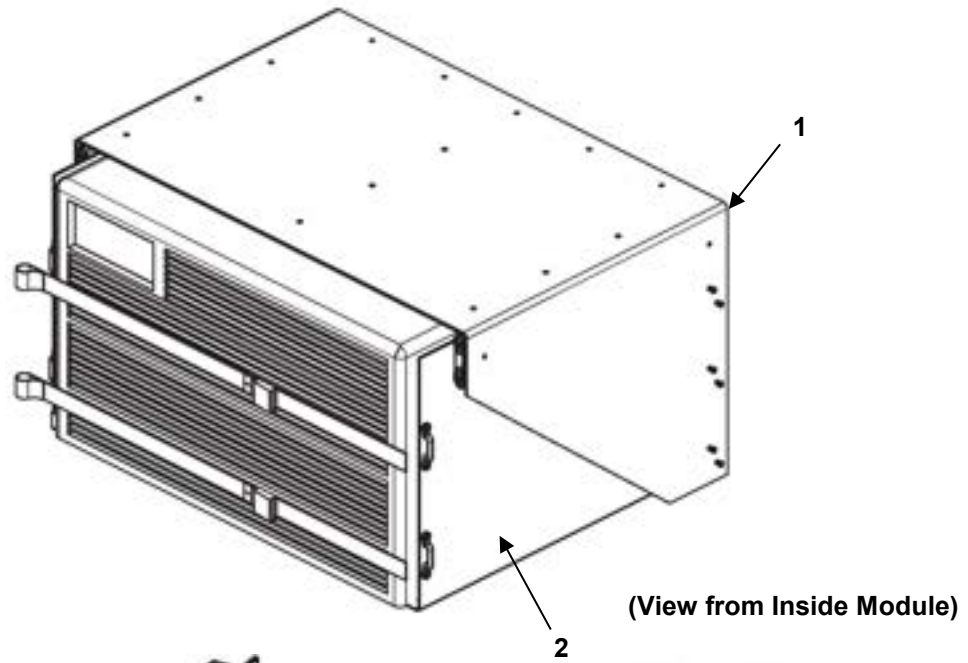


FRONT WALL ELECTRICAL

FIGURE 13

ITEM	NSN	CAGE	PART NO.	DESCRIPTION	QTY
				GROUP 0403 FIGURE 13 FRONT WALL ELECTRICAL	
1	Not Assigned	1NSG3	15988655	.3-WAY LIGHT SWITCH	1
2	Not Assigned	1NSG3	15980201	.LIGHT FIXTURE SUB-ASSY 120VAC 4-FT	2
END OF FIGURE 13					

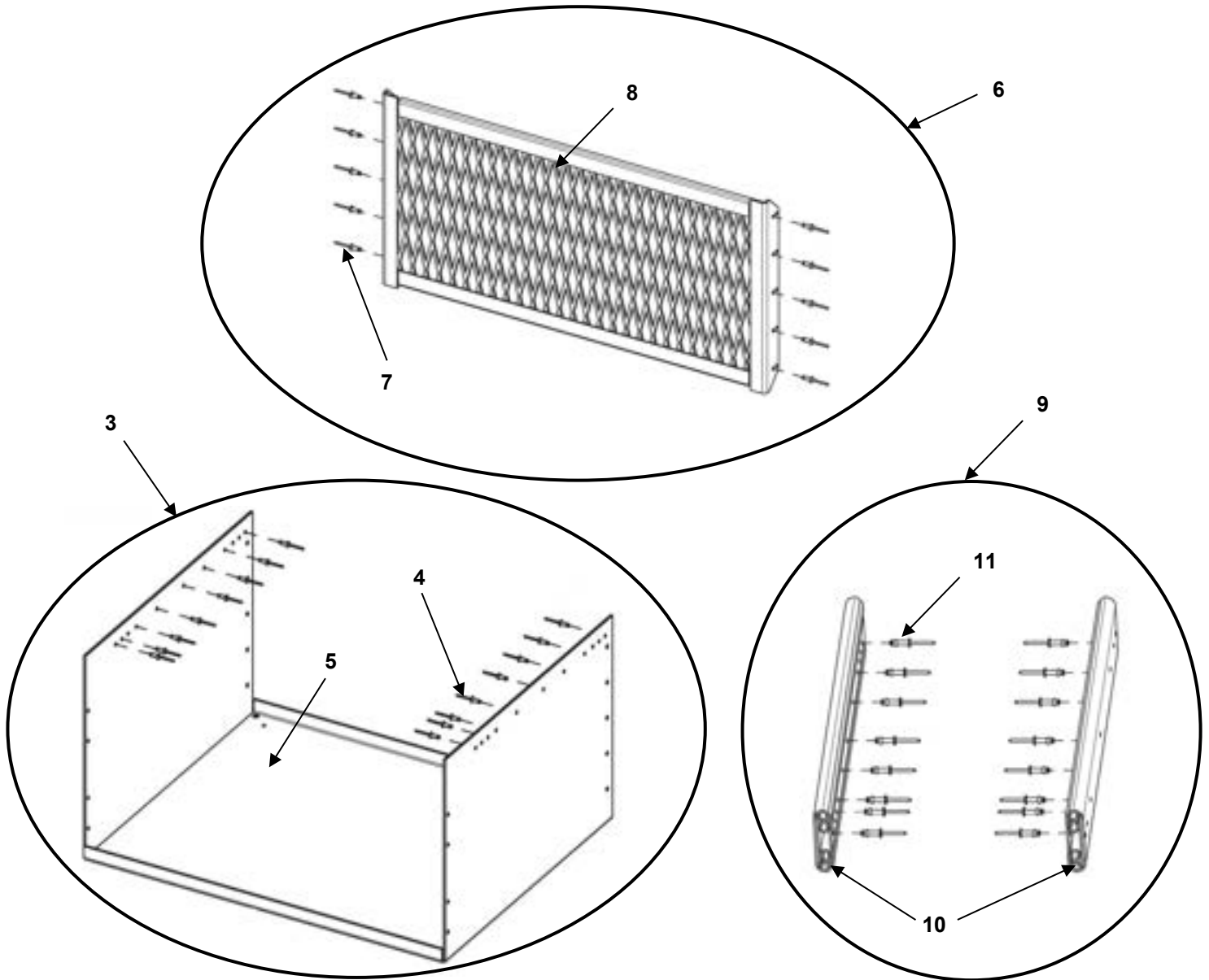
HVAC



HVAC

FIGURE 14

HVAC PARTS



HVAC PARTS

FIGURE 15

ITEM	NSN	CAGE	PART NO.	DESCRIPTION	QTY
				GROUP 0404 FIGURES 14 & 15 HVAC	
1	Not Assigned	1NSG3	15988566-001	..OFFICE MODULE HVAC ASSEMBLY-GREEN	1
1	Not Assigned	1NSG3	15988566-002	..OFFICE MODULE HVAC ASSEMBLY-TAN	1
2	Not Assigned	1NSG3	15220806	..A/C FRIGIDAIRE HEAT COOL #FFTH0822U1 *	1
3	Not Assigned	1NSG3	15988660-001	..A/C PAN COMPLETE W/ HDW.-GREEN	1
3	Not Assigned	1NSG3	15988660-002	..A/C PAN COMPLETE W/ HDW.-TAN	1
4	Not Assigned	NA	NA	...POP RIVET - 3/16 X 1/4 SB64	16
5	Not Assigned	NA	NA	...A/C PAN	1
6	Not Assigned	1NSG3	15988659-001	..EXTERIOR GRILL ASSEMBLY W/ HDW.-GREEN	1
6	Not Assigned	1NSG3	15988659-002	..EXTERIOR GRILL ASSEMBLY W/ HDW.-GREEN	1
7	Not Assigned	NA	NA	...POP RIVET - 3/16 X 1/4 SB64	10
8	Not Assigned	NA	NA	...GRILL GUARD ASSEMBLY	1
9	Not Assigned	1NSG3	15988679	..SLIDE ASSEMBLY W/ MTG. HDW.	1
10	Not Assigned	NA	NA	...DRAWER SLIDE FULL EXT. 18"	2
11	Not Assigned	NA	NA	...POP RIVET - 3/16 X 1/4 SB64	16
END OF FIGURES 14 & 15					

*Contact Frigidaire for HVAC repair parts

END OF WORK PACKAGE

PARTS SUPPORTING INFORMATION**FPU® SYSTEMS OPERATION MANUAL
BOH OFFICE MODULE
(INCLUDING REPAIR PARTS & SPECIAL TOOL LIST)
BOH FPU Field Pack-up Units****NSN INDEX**

NSN	FIG.	ITEM
8145-01-478-3374	01	1
END OF NSN TABLE		

END OF WORK PACKAGE

This page was intentionally left blank

PARTS SUPPORTING INFORMATION

**FPU® SYSTEMS OPERATION MANUAL
BOH OFFICE MODULE
(INCLUDING REPAIR PARTS & SPECIAL TOOL LIST)
BOH FPU Field Pack-up Units**

PART NUMBER INDEX

PART NUMBER	FIG.	ITEM
15100318	03	6
15100323	02	6
15200430	04	4
15220422	11	2
15220806	14	2
15240155	07	11
15500201-001	01	1
15500201-002	01	1
15980113-001	11	1
15980113-002	11	1
15980169	07	3
15980201	13	2
15981863-001	04	1
15981863-002	04	1
15988283	03	2
15988284	02	2
15988354	06	7
15988356	06	4
15988358	08	5
15988479	12	2
15988506	06	2
15988507	06	9
15988508	06	8
15988566-001	14	1
15988566-002	14	1
15988650	12	1
15988653	11	3
15988654	12	3
15988655	13	1

PART NUMBER	FIG.	ITEM
15988657	07	1
15988659-001	15	6
15988659-002	15	6
15988660-001	15	3
15988660-002	15	3
15988667	05	1
15988668	07	4
15988669	07	10
15988672	09	1
15988673	10	1
15988676-001	02	1
15988676-002	02	1
15988677-001	03	1
15988677-002	03	1
15988679	15	9
16100097	08	1
16100111	09	2
16100126	05	3
16100130	10	3
16100228	09	3
16100229	09	4
16335600	06	1
46140142	05	6
48010106	10	4
74100402	08	8
83160532	05	4
83160532	07	14
83201202	07	13
91020102	05	5
End of Part Number Table		

END OF WORK PACKAGE

This page was intentionally left blank

Boh Environmental, LLC

MANUFACTURER'S LIMITED WARRANTY TERMS

Boh Environmental, LLC (BOH) warrants that the Products offered, including the Field Pack-Up (FPU[®]) System, Containerized Mission Systems, Module Kits, and Bare Base Equipment, shall be free from defects in materials and workmanship for a period of twelve (12) months from date of purchase when normally used, maintained and operated by the Customer. Unused Product containing missing or defective components may be returned, within the warranty period, with proof of purchase, to BOH with transportation charges prepaid. BOH, at its option, shall supply a replacement item(s) or refund the purchase price of the Product. BOH shall in its sole discretion determine whether to replace the defective item(s) with identical items, or with items of identical quality and providing identical performance and functional capabilities. BOH will determine, at its sole discretion, whether or not the claim is a valid warranty item. If so, BOH will pay costs (actual transportation plus handling charge) for shipping of the replacement item, when this option is selected.

This warranty is void if Products have been damaged by the Customer as the result of improper or unreasonable use, or other causes not arising out of defects in material or workmanship. The warranty is also void if the Product has at any time been stored or used other than in accordance with the directions set out in the literature relating to the Product (e.g., user/operation manuals). BOH makes no other warranty or representation concerning the Products except that each will meet the performance specifications set forth in the literature relating to the Product. There are no further warranties, including any warranty of merchantability or fitness for a particular purpose covering the Product.

BOH will, at its option, either (1) credit user in the amount paid for any Product which does not perform to these specifications, or (2) replace or repair such Product, provided user so notifies BOH within twelve (12) months of the Products purchase date. BOH shall not be responsible for any consequential damages to user arising as a result of such performance. The Customer will return the item at their cost, if required. Boh may elect to have its representative inspect the item to validate the claim.

Other product components included in the fabrication of items purchased under contract (e.g., air conditioners and generators) that are not manufactured by Boh Environmental are warranted by their individual manufacturer. Copies of such warranties are supplied with the finished Product or are available through BOH.

Please contact BOH for other contract specific warranty terms

THE METRIC SYSTEM AND EQUIVALENTS

Linear Measure

1 centimeter = 10 millimeters = .39 inch

1 decimeter = 10 centimeters = 3.94 inches

1 meter = 10 decimeters = 39.37 inches

1 decameter = 10 meters = 32.8 feet

1 hectometer = 10 decameters = 328.08 feet

1 kilometer = 10 hectometers = 3,280.8 feet

Liquid Measure

1 centiliter = 10 milliliters = .34 fl. ounce

1 deciliter = 10 centiliters = 3.38 fl. ounces

1 liter = 10 deciliters = 33.81 fl. ounces

1 deciliter = 10 liters = 2.64 gallons

1 hectoliter = 10 deciliters = 26.42 gallons

1 kiloliter = 10 hectoliters = 264.18 gallons

Weights

1 centigram = 10 milligrams = .15 grain

1 decigram = 10 centigrams = 1.54 grains

1 gram = 10 decigrams = .035 ounce

1 dekagram = 10 grams = .35 ounce

1 hectogram = 10 dekagrams = 3.52 ounces

1 kilogram = 10 hectograms = 2.2 pounds

1 quintal = 100 kilograms = 220.46 pounds

1 metric ton = 10 quintals = 1.1 short tons

Square Measure

1 sq. centimeter = 100 sq. millimeters = .155 sq. inch

1 sq. decimeter = 100 sq. centimeters = 15.5 sq. inches

1 sq. meter (centare) = 100 sq. decimeters = 10.76 sq. feet

1 sq. decameter (are) = 100 sq. meters = 1,076.4 sq. feet

1 sq. hectometer (hectare) = 100 sq. decameters = 2.47 acres

1 sq. kilometer = 100 sq. hectometers = .386 sq. mile

Cubic Measure

1 cu. centimeter = 1000 cu. millimeters = .06 cu. inch

1 cu. decimeter = 1000 cu. centimeters = 61.02 cu. inches

1 cu. meter = 1000 cu. decimeters = 35.31 feet

Approximate Conversion Factors

To change	To	Multiply by	To change	To	Multiply by
Inches	centimeters	2.540	ounce/inches	Newton/meters	0.007062
feet	meters	0.305	centimeters	inches	0.394
yards	meters	0.914	meters	feet	3.280
miles	kilometers	1.609	meters	yards	1.094
square inches	square centimeters	6.451	kilometers	miles	0.621
square feet	square meters	0.093	square centimeters	square inches	0.155
square yards	square meters	0.836	square meters	square feet	10.764
square miles	square kilometers	2.590	square meters	square yards	1.196
acres	square hectometers	0.405	square kilometers	square miles	0.386
cubic feet	cubic meters	0.028	square hectometers	acres	2.471
cubic yards	cubic meters	0.765	cubic meters	cubic feet	35.315
fluid ounces	milliliters	29.573	cubic meters	cubic yards	1.308
pints	liters	0.473	milliliters	fluid ounces	0.034
quarts	liters	0.946	liters	pints	2.113
gallons	liters	3.785	liters	quarts	1.057
ounces	grams	28.349	liters	gallons	0.264
pounds	kilograms	0.454	grams	ounces	0.035
short tons	metric tons	0.907	kilograms	pounds	2.205
pound/foot	Newton/meters	1.356	metric tons	short tons	1.102
pound/inches	Newton /meters	0.11296			

Temperature (Exact)

$\frac{5}{9} (\text{after subtracting } 32)$ Celsius temperature $-\frac{9}{5} + 32$ Fahrenheit temperature

This page was intentionally left blank