

**FPU® SYSTEMS OPERATION MANUAL  
(INCLUDING REPAIR PARTS & SPECIAL TOOL LIST)  
BOH Modular Workshop Container (MWC)  
BOH FPU Field Pack-up Units**

**CHAPTER 6**

**PARTS SUPPORTING INFORMATION**

This page was intentionally left blank

---

**PARTS SUPPORTING INFORMATION****FPU® SYSTEMS OPERATION MANUAL  
(INCLUDING REPAIR PARTS & SPECIAL TOOL LIST)  
BOH Modular Workshop Container (MWC)  
BOH FPU Field Pack-up Units****INTRODUCTION TO MAINTENANCE ALLOCATION CHART (MAC)**

---

**INTRODUCTION****The BOH Environmental LLC recommended MAC**

This introduction provides a general explanation of all maintenance and repair functions authorized at various maintenance levels under the standard Army Maintenance System concept.

The MAC (WP 0022 00), immediately following the introduction) designates overall authority and responsibility for the performance of maintenance functions on the MWC System. The application of the maintenance functions to the MWC System shall be consistent with the capacities and capabilities of the designated maintenance levels, which are shown on the MAC in column (4) as:

Unit – includes two sub columns, C (operator/crew) and O (unit) maintenance.  
Direct Support – includes an F sub column.  
General Support – includes an H sub column.  
Depot – includes a D sub column.

**Maintenance Functions**

Maintenance functions are limited to and defined as follows:

1. **Inspect:** To determine the serviceability of an item by comparing its physical and mechanical characteristics with established standards through examination (e.g., by sight, sound, or feel). This includes scheduled inspections.
2. **Test:** To verify serviceability by measuring the mechanical characteristics of an item and comparing those characteristics with prescribed standards on a scheduled basis, i.e., load testing of lift devices and hydrostatic testing of pressure hoses.
3. **Service:** Operations required periodically to keep an item in proper operating condition; e.g., to clean (includes decontaminate, when required), to preserve, to drain, to paint, or to replenish fuel, lubricants, chemical fluids, or gases.
4. **Adjust:** To maintain or regulate, within prescribed limits, by bringing into proper position, or by setting the operating characteristics to specific parameters.
5. **Align:** To adjust specified variable elements of an item to bring about optimum or desired performance.
6. **Calibrate:** To determine and cause corrections to be made or to be adjusted on instruments of test, measuring, and diagnostic equipment used in precision measurement. Consists of comparisons of two instruments, one of which is a certified standard of known accuracy, to detect and adjust any discrepancy in the accuracy of the instrument being compared.
7. **Remove/Install:** To remove and install the same item when required to perform service or other

maintenance functions. Install may be the act of emplacing, seating, or fixing into position a spare, repair part, or module (component or assembly) in a manner to allow the proper functioning of an equipment or system.

8. Replace: To remove an unserviceable item and install a serviceable counterpart in its place. "Replace" is authorized by the MAC and assigned maintenance level is shown as the third position code of the Source, Maintenance and Recoverability (SMR) code.
9. Repair: The application of maintenance services, including fault location-Troubleshooting, removal/installation, disassembly/assembly procedures, and maintenance actions to identify troubles and restore serviceability to an item by correcting specific damage, fault, malfunction, or failure in a part, subassembly, module (component or assembly), end item, or system.

### **NOTE**

The following definitions are applicable to the "REPAIR" maintenance functions of Service, Inspect, Test, Adjust, Align, Calibrate, and/or Replace:

Fault location-Troubleshooting – The process of investigating and detecting the cause of equipment malfunctioning; the act of isolating a fault within a system or Unit Under Test (UUT).

Disassembly/Assembly – The step-by-step breakdown (taking apart) of a spare/functional group coded item to the level of its least component, that is assigned an SMR code for the level of maintenance under consideration (i.e., identified as maintenance significant).

Actions – Welding, grinding, riveting, straightening, facing, machining, and/or resurfacing.

10. Overhaul: That maintenance effort (service/action) prescribed to restore an item to a completely serviceable/operational condition as required by maintenance standards in appropriate technical publications. Overhaul is normally the highest degree of maintenance performed by the Army. Overhaul does not normally return an item to like new condition.
11. Rebuild: Consists of those services/actions necessary for the restoration of unserviceable equipment to a like new condition in accordance with original manufacturing standards. Rebuild is the highest degree of materiel maintenance applied to Army equipment. The rebuild operation includes the act of returning to zero those age measurements (e.g., hours/miles) considered in classifying Army equipment/components.

### **Explanation of Columns in the MAC**

Column (1) – Group Number. Column (1) lists Functional Group Code (FGC) numbers, the purpose of which is to identify maintenance significant components, assemblies, subassemblies, and modules with the Next Higher Assembly (NHA).

Column (2) – Component/Assembly. Column (2) contains the item names of components, assemblies, subassemblies, and modules for which maintenance is authorized.

Column (3) – Maintenance Function. Column (3) lists the functions to be performed on the item listed in column (2). (For a detailed explanation of these functions refer to "Maintenance Functions" outlined above).

Column (4) – Maintenance Level. Column (4) specifies each level of maintenance authorized to perform each function listed in column (3), by indicating work time required (expressed as man-hours in whole hours or decimals) in the appropriate sub column. This work time figure represents the active time required to perform that maintenance function at the indicated level of maintenance. If the number or complexity of the tasks within the listed maintenance function varies at different maintenance levels, appropriate work time figures are to be shown for each level. The work time figure represents the average time required to restore an item (assembly, subassembly, component, module, end item, or system) to a serviceable condition under typical field operating conditions. This time includes preparation time (including any necessary disassembly/assembly time), troubleshooting/fault location time, and quality assurance time in addition to the time required to perform the specific tasks identified for the maintenance functions authorized in the MAC. The symbol designations for the various maintenance levels are as follows:

- **C – Operator or crew maintenance**
- **O– Unit maintenance**
- **F – Direct Support maintenance**
- **L – Specialized repair activity (SRA)**
- **H – General support maintenance**
- **K – Commercial depot maintenance**

#### **NOTE**

The "L", maintenance level is not included in column (4) of the MAC. Functions to this level of maintenance are identified by a work time figure in the "H" column of column (4), and an associated reference code is used in the REMARKS column (6). This code is keyed to the remarks and the SRA complete repair application is explained there.

Column (5) – Tools and Equipment Reference Code. Column (5) specifies, by code, those common tool sets (not individual tools), common Test, Measurement and Diagnostic Equipment (TMDE), and special tools, special TMDE and special support equipment required to perform the designated function.

Column (6) – Remarks Code. When applicable, this column contains a letter code, in alphabetical order, which is keyed to the remarks table entries.

#### **Explanation of Columns in the Tools and Test Equipment Requirements**

Column (1) – Tool or Test Equipment Reference Code. The tool or test equipment reference code correlates with a code used in column (5) of the MAC.

Column (2) – Maintenance Level. The lowest level of maintenance authorized to use the tool or test equipment.

Column (3) – Nomenclature. Name or identification of the tool or test equipment.

Column (4) – National Stock Number (NSN). The NSN of the tool or test equipment.

Column (5) – Tool Number. The manufacturer's part number, model number, or type number.

Column (1) – Remarks Code. The code recorded in column (6) of the MAC.

Column (2) – Remarks. This column lists information pertinent to the maintenance function being performed as indicated in the MAC.

## EXPLANATION OF COLUMNS IN THE REPAIR PARTS LIST

**ITEM NO.** (Column (1)). Indicates the number used to identify items called out in the illustration.

**NSN** (Column (2)). The NSN for the item is listed in this column.

**CAGEC** (Column (3)). The Commercial and Government Entity Code (CAGEC) is a five-digit code which is used to identify the manufacturer, distributor, or Government agency/activity that supplies the item.

**PART NUMBER** (Column (4)). Indicates the primary number used by the manufacturer (individual, company, firm, corporation, or Government activity), which controls the design and characteristics of the item by means of its engineering drawings, specifications, standards, and inspection requirements to identify an item or range of items.

### NOTE

When you use an NSN to requisition an item, the item you receive may have a different P/N from the number listed.

## DESCRIPTION AND USABLE ON CODE (UOC)

**UOC** (Column (5)). This column includes the following information:

### The ITEM/Assembly Progression (.Item or Assembly, ..Next Lower Item, ...Next Lower Item)

1. The federal item name, and when required, a minimum description to identify the item.
2. P/Ns of bulk materials are referenced in this column in the line entry to be manufactured or fabricated.
3. Hardness Critical Item (HCI). A support item that provides the equipment with special protection from electromagnetic pulse (EMP) damage during a nuclear attack.
4. The statement END OF FIGURE appears just below the last item description in column (6) for a given figure in both the repair parts list and special tools list work packages.

**QTY** (Column (6)). The QTY (quantity per figure) column indicates the quantity of the item used in the breakout shown on the illustration/figure, which is prepared for a functional group, sub-functional group, or an assembly. An "AR" (as required) appearing in this column instead of a quantity indicates that the quantity is variable and quantity may change from application to application

## ABBREVIATIONS

### Abbreviation

AY  
KT  
FPU  
AR

### Explanation

ASSEMBLY  
KIT  
FIELD PACK-UP UNIT  
AS REQUIRED

## END OF WORK PACKAGE

## PARTS SUPPORTING INFORMATION

**FPU® SYSTEMS OPERATION MANUAL  
(INCLUDING REPAIR PARTS & SPECIAL TOOL LIST)  
BOH Modular Workshop Container (MWC)  
BOH FPU Field Pack-up Units**

## MAINTENANCE ALLOCATION CHART (MAC)

(1) Group Number	(2) Component/Assembly	(3) Maintenance Function	(4) Maintenance Level					(5) Tools and Equipment Ref Code	(6) Remarks
			Unit		Direct Support	General Support	Depot		
			C	O	F	H	D		
00	MWC SYSTEM								
01	MODULAR WORKSHOP CONTAINER (MWC)								
0101	HVAC VINYL COVER AND EYE ASSEMBLIES	INSPECT	0.5	0.5					
		SERVICE		0.5					
		REPLACE		1					
0102	STAIRWAY AND HAND RAIL	INSPECT	0.5	0.5					
		SERVICE		0.5					
		REPLACE		1					
0103	MWC DOOR ASSEMBLY	INSPECT	0.5	0.5					
		SERVICE		0.2					
		REPLACE			2				
0104	ELECTRICAL POWER CABLE BOX DOORS	INSPECT	0.2	0.2					
		SERVICE		0.2					
		REPLACE			1.5				
02	MWC INTERIOR PARTS								
0201	RIGHT SIDE CABINET/WORK BENCH	INSPECT	0.5	0.5					
		SERVICE		0.2					
		REPLACE		1.5					

(1)	(2)	(3)	(4)					(5)	(6)
Group Number	Component/Assembly	Maintenance Function	Maintenance Level					Tools and Equipment Ref Code	Remarks
			Unit		Direct Support	General Support	Depot		
			C	O	F	H	D		
020101	RIGHT SIDE WORK BENCH DRAWERS	INSPECT	0.5	0.5					
		SERVICE		0.2					
		REPLACE		1.5					
0202	RIGHT SIDE BOOK SHELF	INSPECT	0.5	0.5					
		SERVICE		0.2					
		REPLACE		0.5					
0203	UPPER CABINET R/L OPEN DOOR	INSPECT	0.2	0.2					
		SERVICE		0.5					
		REPLACE		.5					
0204	LEFT SIDE CABINET AND WORK BENCH	INSPECT	0.5	0.5					
		SERVICE		0.2					
		REPLACE		1.5					
020401	LEFT SIDE CABINET DRAWERS	INSPECT		0.1					
		SERVICE		0.1					
		REPLACE		0.5					
0205	LEFT SHELF CABINET	INSPECT		0.1					
		SERVICE		0.1					
		REPLACE		1.5					
0206	LEFT SIDE DESK ASSEMBLY	INSPECT		0.1					
		SERVICE		0.1					
		REPLACE		1.5					
020601	DESK DRAWERS	INSPECT		0.1					
		SERVICE		0.1					
		REPLACE		0.5					



(1)	(2)	(3)	(4)					(5)	(6)
Group Number	Component/Assembly	Maintenance Function	Maintenance Level					Tools and Equipment Ref Code	Remarks
			Unit		Direct Support	General Support	Depot		
			C	O	F	H	D		
03	Electrical System								
0301	INTERIOR ELECTRICAL COMPONENTS FRONT	INSPECT	0.5	0.5					
		SERVICE		0.2					
	EXHAUST FAN	REPLACE			1.5				
0302	INTERIOR ELECTRICAL COMPONENTS REAR	INSPECT	0.5	0.5					
		SERVICE		0.2					
		REPLACE			2				
0303	LIGHTING SYSTEM	INSPECT		0.1					
				0.1					
					1.5				
0304	EXTERIOR ELECTRICAL COMPONENTS REAR	INSPECT	0.5	0.5					
		SERVICE		0.2					
		REPLACE			2				
0305	LIGHTING INTERRUPTER DOOR SWITCH	INSPECT	0.2	0.2					
		SERVICE		0.2					
		REPLACE			1				
0306	RETROFIT HVAC	INSPECT	0.5	0.5					
		SERVICE		0.5					
		REPLACE			2				

(1)	(2)	(3)	(4)					(5)	(6)
Group Number	Component/Assembly	Maintenance Function	Maintenance Level					Tools and Equipment Ref Code	Remarks
			Unit		Direct Support	General Support	Depot		
			C	O	F	H	D		
04	Optional Accessories								
0401	OPTIONAL VAULT	INSPECT		0.1					
		SERVICE		0.1					
		REPLACE		0.5					
0401	OPTIONAL REFRIGERATOR	INSPECT	0.5	0.5					
		SERVICE		0.5					
		REPLACE		0.5					
0402	CABINET OPTIONS	INSPECT	0.5	0.5					
				0.2					
				1.5					
<b>END OF MAC</b>									

**END OF WORK PACKAGE**

---

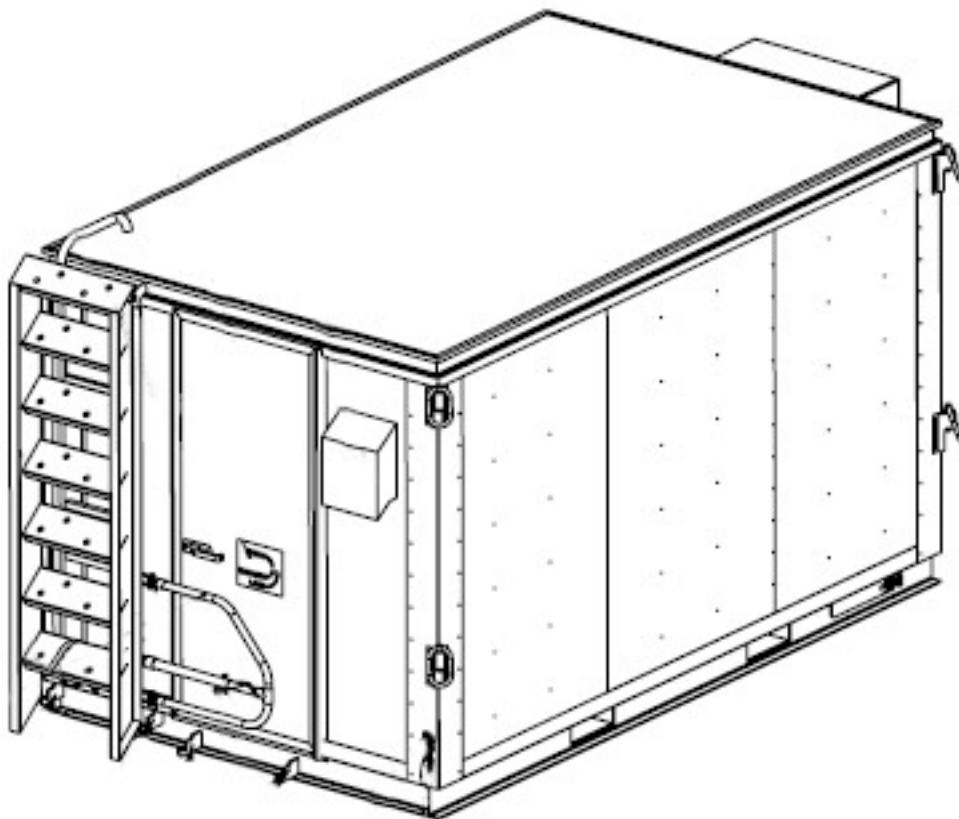
**PARTS SUPPORTING INFORMATION**

**FPU® SYSTEMS OPERATION MANUAL  
(INCLUDING REPAIR PARTS & SPECIAL TOOL LIST)  
BOH Modular Workshop Container (MWC)  
BOH FPU Field Pack-up Units**

**Exterior Repair Parts**

---

**MODULAR WORKSHOP CONTAINER (MWC)**



**FIGURES 01 to 06**

MODULAR WORKSHOP CONTAINER (MWC)

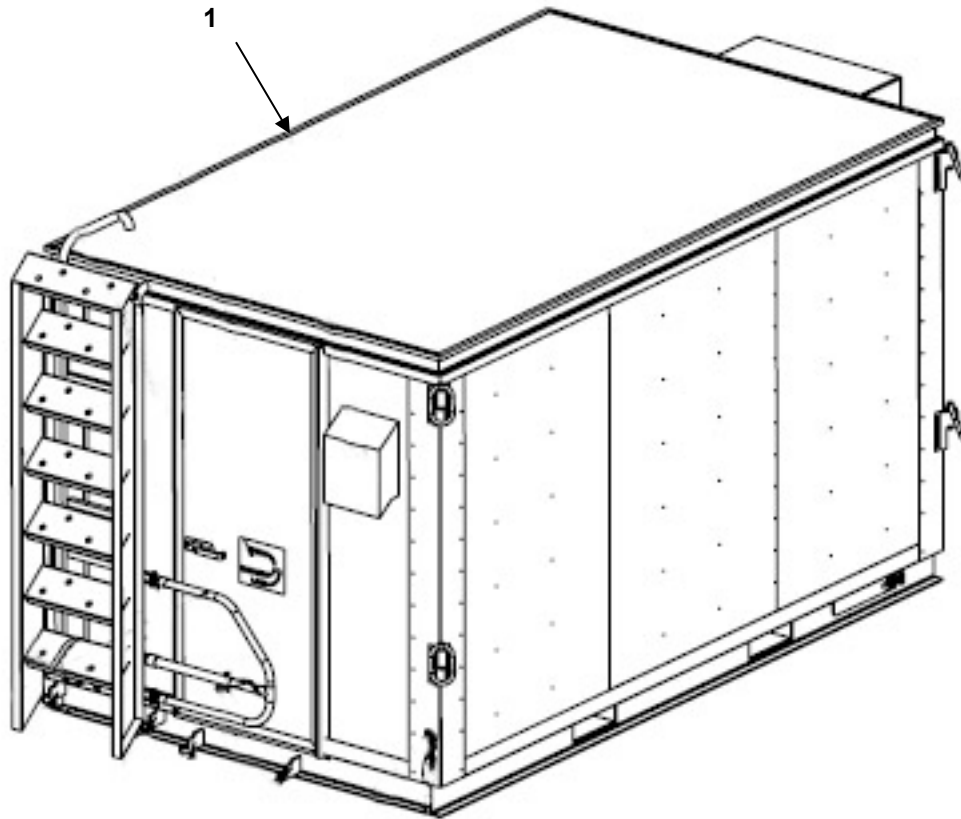


FIGURE 01 MODULAR WORKSHOP CONTAINER (MWC)

(1) ITEM NO.	(2) NSN	(3) CAGEC	(4) PART NUMBER	(5) DESCRIPTION AND USABLE ON CODE (UOC)	(6) QTY
				<b>GROUP 01 FIGURE 01 MODULAR WORKSHOP CONTAINER (MWC)</b>	
1	8145-01-524-4030	1NSG3	15002028-001	.MWC MODULAR WORKSHOP CONTAINER GREEN	1
1	8145-01-524-4030	1NSG3	15002028-002	.MWC MODULAR WORKSHOP CONTAINER TAN	1
<b>END OF FIGURE 01</b>					

HVAC, VINYL COVER AND EYE ASSEMBLIES

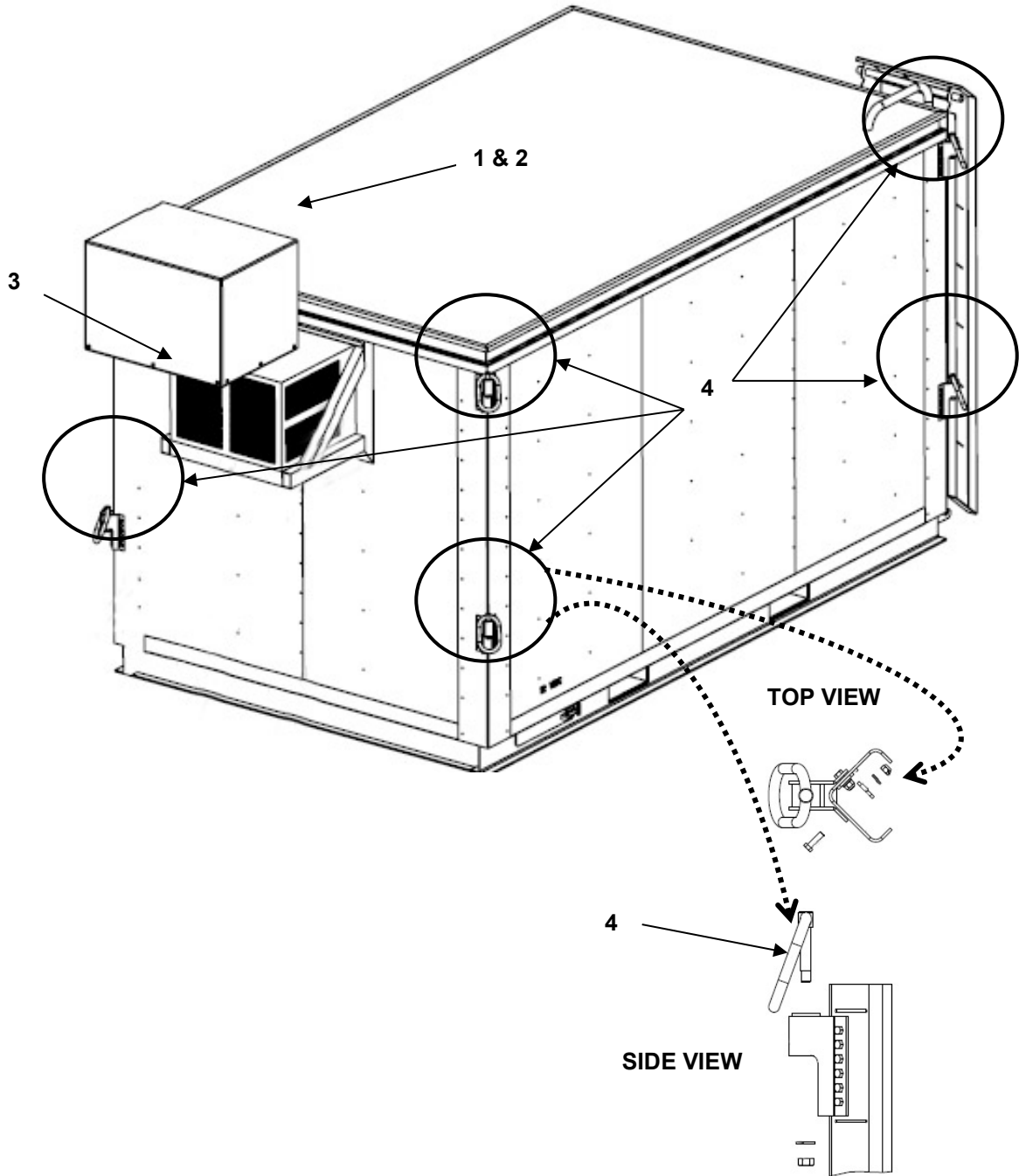


FIGURE 02 HVAC VINYL COVER AND EYE ASSEMBLIES

(1) ITEM NO.	(2) NSN	(3) CAGEC	(4) PART NUMBER	(5) DESCRIPTION AND USABLE ON CODE (UOC)	(6) QTY
				<b>GROUP 0101 FIGURE 02 HVAC VINYL COVER AND EYE ASSEMBIES</b>	
1	Not Assigned	1NSG3	15988273-001	.AIR CONDITIONER SOFT GOODS KIT GREEN	1
2	Not Assigned	1NSG3	16330142	..A/C DUST COVER BLACK	1
3	Not Assigned	1NSG3	15220819-001	.AIR CONDITIONER HVAC GREEN	1
4	Not Assigned	1NSG3	15988350-001	TIE-DOWN RING ASSY. GREEN	8
1	Not Assigned	1NSG3	15988273-002	.AIR CONDITIONER SOFT GOODS KIT TAN	1
2	Not Assigned	1NSG3	16330142	..A/C DUST COVER BLACK	1
3	Not Assigned	1NSG3	15220819-002	.AIR CONDITIONER HVAC TAN	1
4	Not Assigned	1NSG3	15988350-002	.TIE-DOWN RING ASSY. TAN	8
<b>END OF FIGURE 02</b>					

## STAIRWAY AND HANDRAIL ASSEMBLY

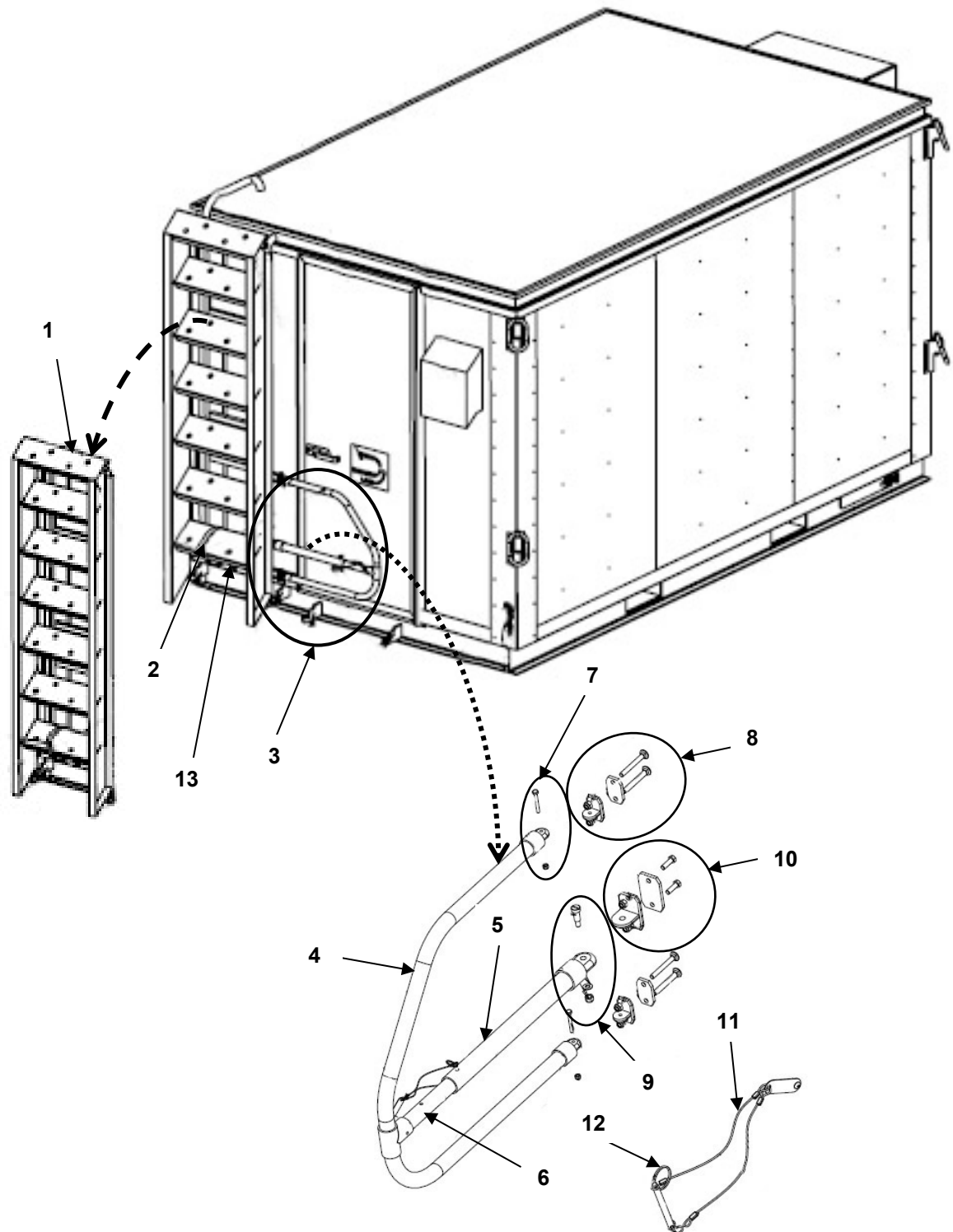


FIGURE 03 STAIRWAY AND HANDRAIL ASSEMBLY

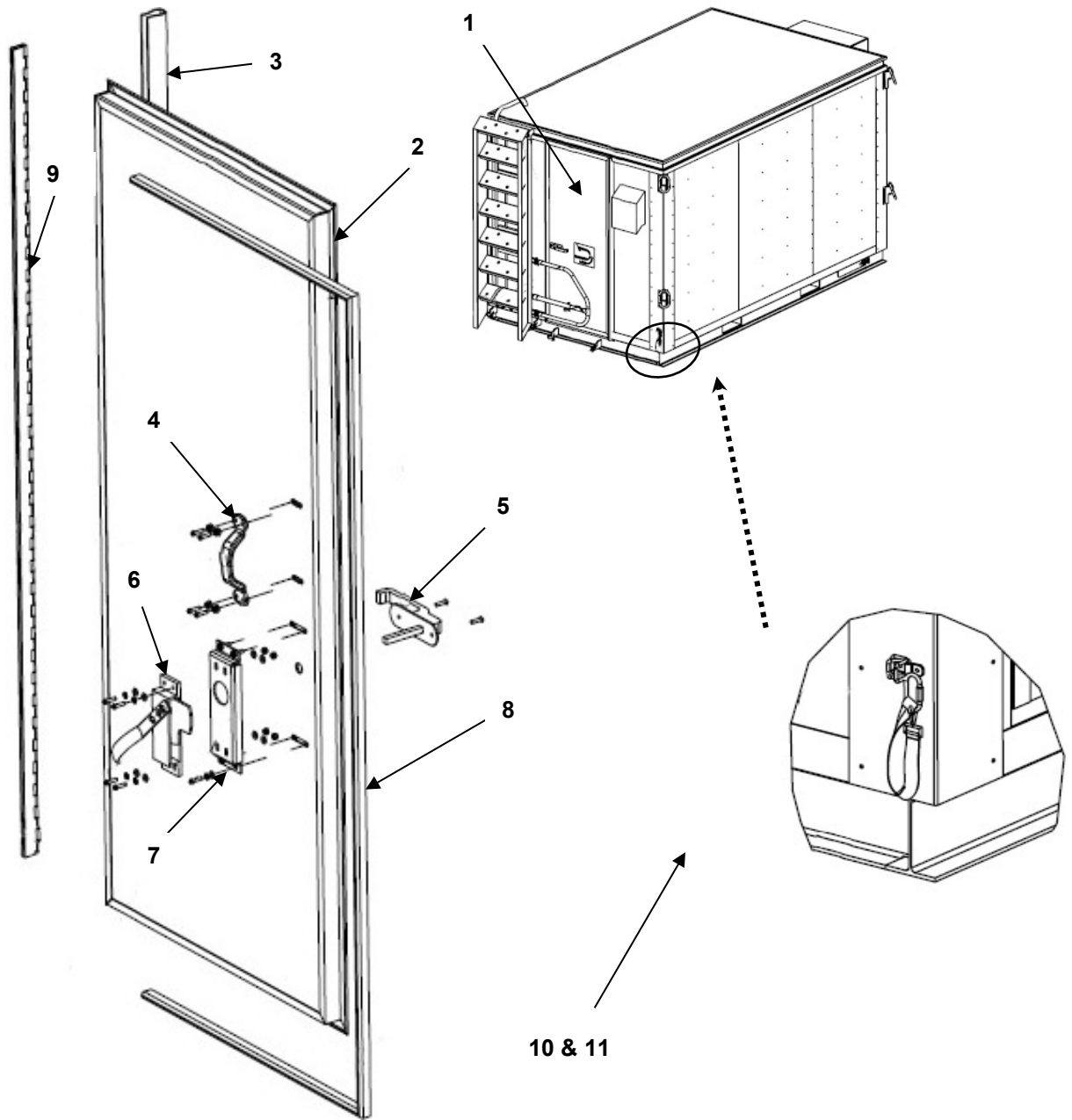


(1) ITEM NO.	(2) NSN	(3) CAGEC	(4) PART NUMBER	(5) DESCRIPTION AND USABLE ON CODE (UOC)	(6) QTY
				<b>GROUP 0102 FIGURE 03 STAIRWAY AND HANDRAIL ASSEMBLY GREEN</b>	
1	Not Assigned	1NSG3	16335051-001	.STAIRWAY GREEN	1
2	Not Assigned	1NSG3	16335055	.STAIR SECURING STRAP	1
3	Not Assigned	1NSG3	15988337-001	.HANDRAIL COMPLETE ASSY. W/HDWR GREEN	1
4	Not Assigned	1NSG3	16335035-001	..HANDRAIL TUBE ASSY. W/HDWR GREEN	1
5	Not Assigned	1NSG3	16330088-001	...HANDRAIL LOCK #1 GREEN	1
6	Not Assigned	1NSG3	16330089-001	...HANDRAIL LOCK #2 GREEN	1
7	Not Assigned	1NSG3	15988339-001	...END CAP #1 W/HDWR GREEN	2
8	Not Assigned	1NSG3	15988343-001	...END CAP BASE #1 W/HDWR GREEN	2
9	Not Assigned	1NSG3	15988341-001	...END CAP #2 W/HDWR GREEN	1
10	Not Assigned	1NSG3	15988345-001	...END CAP BASE #2 W/HDWR GREEN	1
11	Not Assigned	1NSG3	15988347	...LANYARD ASSY. W/HDWR	1
12	Not Assigned	1NSG3	15988348	....CLEVIS PIN ASSY.	1
13	Not Assigned	1NSG3	15940107-001	..STRAP D RING	1

(1) ITEM NO.	(2) NSN	(3) CAGEC	(4) PART NUMBER	(5) DESCRIPTION AND USABLE ON CODE (UOC)	(6) QTY
				<b>GROUP 0102 FIGURE 03 STAIRWAY AND HANDRAIL ASSEMBLY TAN</b>	
1	Not Assigned	1NSG3	16335051-002	.STAIRWAY TAN	1
2	Not Assigned	1NSG3	16335055	.STAIR SECURING STRAP	1
3	Not Assigned	1NSG3	15988337-002	.HANDRAIL COMPLETE ASSY. W/HDWR TAN	1
4	Not Assigned	1NSG3	16335035-002	..HANDRAIL TUBE ASSY. W/HDWR TAN	1
5	Not Assigned	1NSG3	16330088-002	...HANDRAIL LOCK #1 TAN	1
6	Not Assigned	1NSG3	16330089-002	...HANDRAIL LOCK #2 TAN	1
7	Not Assigned	1NSG3	15988339-002	...END CAP #1 W/HDWR TAN	2
8	Not Assigned	1NSG3	15988343-002	...END CAP BASE #1 W/HDWR TAN	2
9	Not Assigned	1NSG3	15988341-002	..END CAP #2 W/HDWR TAN	1
10	Not Assigned	1NSG3	15988345-002	...END CAP BASE #2 W/HDWR TAN	1
11	Not Assigned	1NSG3	15988347	...LANYARD ASSY W/HDWR	1
12	Not Assigned	1NSG3	15988348	....CLEVIS PIN ASSY.	1
13	Not Assigned	1NSG3	15940107-002	..STRAP D RING TAN	1
<b>END OF FIGURE 03</b>					

This page was intentionally left blank

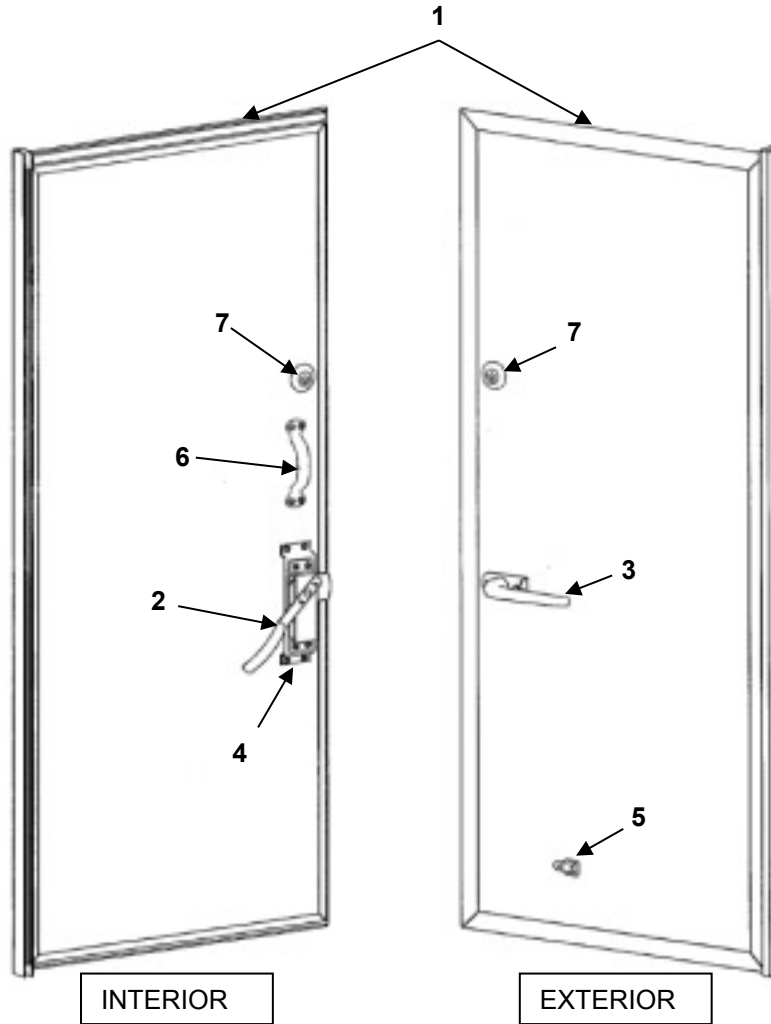
**OLDER STYLE MWC DOOR ASSEMBLY**  
Prior to MWC SERIAL # AC 15002028-4226



**FIGURE 04 OLDER STYLE MWC DOOR ASSEMBLY**

(1) ITEM NO.	(2) NSN	(3) CAGEC	(4) PART NUMBER	(5) DESCRIPTION AND USABLE ON CODE (UOC)	(6) QTY
				<b>GROUP 0103 FIGURE 04 OLDER STYLE MWC DOOR ASSEMBLY Prior to MWC SERIAL # AC 15002028-4226</b>	
1	Not Assigned	1NSG3	15988330-001	.COMPLETE DOOR ASSY W/HDWR GREEN	1
2	Not Assigned	1NSG3	15988274-001	..DOOR STRUCTURE ASSY GREEN	1
3	Not Assigned	1NSG3	15988334	..HINGE GASKET W/HDWR	1
4	Not Assigned	1NSG3	15988335	..INSIDE PULL HANDLE	1
5	Not Assigned	1NSG3	15988332-001	..OUTSIDE HANDLE KIT W/HDWR GREEN	1
6	Not Assigned	1NSG3	15988333	..INSIDE DOOR HANDLE W/HDWR KIT	1
7	Not Assigned	1NSG3	15988336	..INSIDE HANDLE LATCH PLATE KIT	1
8	Not Assigned	1NSG3	83020101	..DOOR SEAL KIT W/ADHESIVE	1
9	Not Assigned	1NSG3	15988331	..HINGE KIT	1
10	Not Assigned	1NSG3	16335037	.DOOR STRAP LINK ASSY.	1
11	Not Assigned	1NSG3	15940107-001	..STRAP D RING GREEN	1
1	Not Assigned	1NSG3	15988330-002	.COMPLETE DOOR ASSY W/HDWR TAN	1
2	Not Assigned	1NSG3	15988274-002	..DOOR STRUCTURE ASSY TAN	1
3	Not Assigned	1NSG3	15988334	..HINDGE GASKET W/HDWR	1
4	Not Assigned	1NSG3	15988335	..INSIDE PULL HANDLE	1
5	Not Assigned	1NSG3	15988332-002	..OUTSIDE HANDLE KIT W/HDWR TAN	1
6	Not Assigned	1NSG3	15988333	..INSIDE DOOR HANDLE W/HDWR KIT	1
7	Not Assigned	1NSG3	15988336	..INSIDE HANDLE LATCH PLATE KIT	1
8	Not Assigned	1NSG3	83020101	..DOOR SEAL KIT W/ADHESIVE	1
9	Not Assigned	1NSG3	15988331	..HINDGE KIT	1
10	Not Assigned	1NSG3	16335037	.DOOR STRAP LINK ASSY.	1
11	Not Assigned	1NSG3	15940107-002	..STRAP D RING TAN	1
<b>END OF FIGURE 04</b>					

**NEW MWC DOOR ASSEMBLY**  
**MWC SERIAL # AC 15002028-4226 and beyond**



**FIGURE 05 NEW MWC DOOR ASSEMBLY**

(1) ITEM NO.	(2) NSN	(3) CAGEC	(4) PART NUMBER	(5) DESCRIPTION AND USABLE ON CODE (UOC)	(6) QTY
				<b>GROUP 0103 FIGURE 05 NEW MWC DOOR MWC SERIAL # Prior to MWC SERIAL # AC 15002028-4226 and beyond</b>	
1	Not Assigned	1NSG3	16335031-001	.COMPLETE DOOR ASSY W/HDWR GREEN	1
2	Not Assigned	1NSG3	15100321	..DOOR DEAD BOLT LATCH	1
3	Not Assigned	1NSG3	15100324	..EXTERIOR DOOR HANDLE	1
4	Not Assigned	1NSG3	16330156	...LATCH BACK PLATE	1
5	Not Assigned	1NSG3	15940107	..D RING	1
6	Not Assigned	1NSG3	70490304	..PULL HANDLE	1
7	Not Assigned	1NSG3	70461244	..DEAD BOLT UPPER	1
1	Not Assigned	1NSG3	16335031-002	.COMPLETE DOOR ASSY W/HDWR TAN	1
2	Not Assigned	1NSG3	15100321	..DOOR DEAD BOLT LATCH	1
3	Not Assigned	1NSG3	15100324	..EXTERIOR DOOR HANDLE	1
4	Not Assigned	1NSG3	16330156	...LATCH BACK PLATE	1
5	Not Assigned	1NSG3	15940107	..D RING	1
6	Not Assigned	1NSG3	70490304	..PULL HANDLE	1
7	Not Assigned	1NSG3	70461244	..DEAD BOLT UPPER	1
<b>END OF FIGURE 05</b>					

L/R POWER CABLE STORAGE DOORS

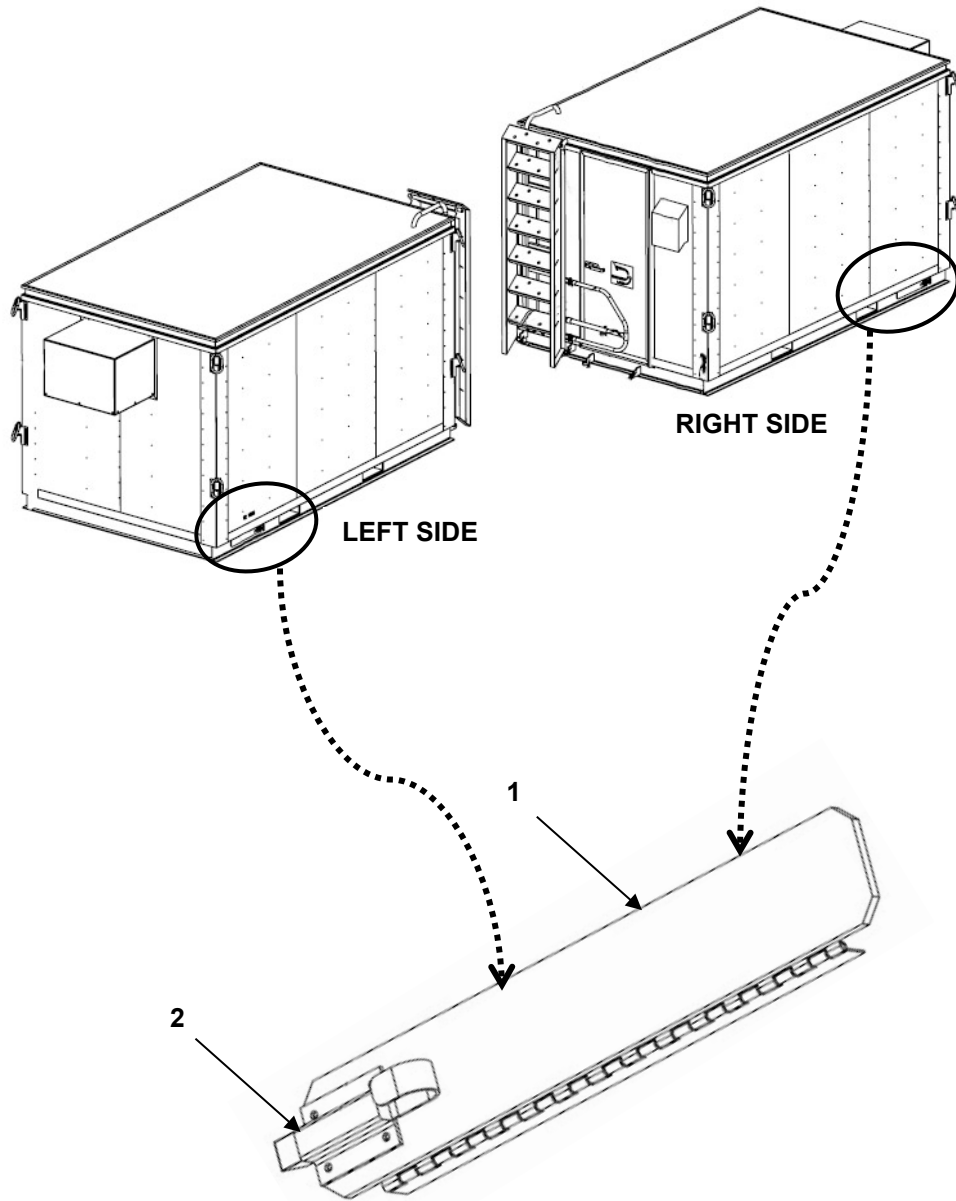


FIGURE 06 L/R POWER CABLE STORAGE DOORS



(1) ITEM NO.	(2) NSN	(3) CAGEC	(4) PART NUMBER	(5) DESCRIPTION AND USABLE ON CODE (UOC)	(6) QTY
				<b>GROUP 0104 FIGURE 06 L/R POWER CABLE STORAGE DOORS</b>	
1	Not Assigned	1NSG3	16332300-001	.L/R POWER CABLE STORAGE DOOR GREEN	2
2	Not Assigned	1NSG3	15988383-001	..SLAM LATCH W/HDWR GREEN	2
1	Not Assigned	1NSG3	16332300-002	.L/R POWER CABLE STORAGE DOOR TAN	2
2	Not Assigned	1NSG3	15988383-002	..SLAM LATCH W/HDWR TAN	2
<b>END OF FIGURE 06</b>					

**END OF WORK PACKAGE**

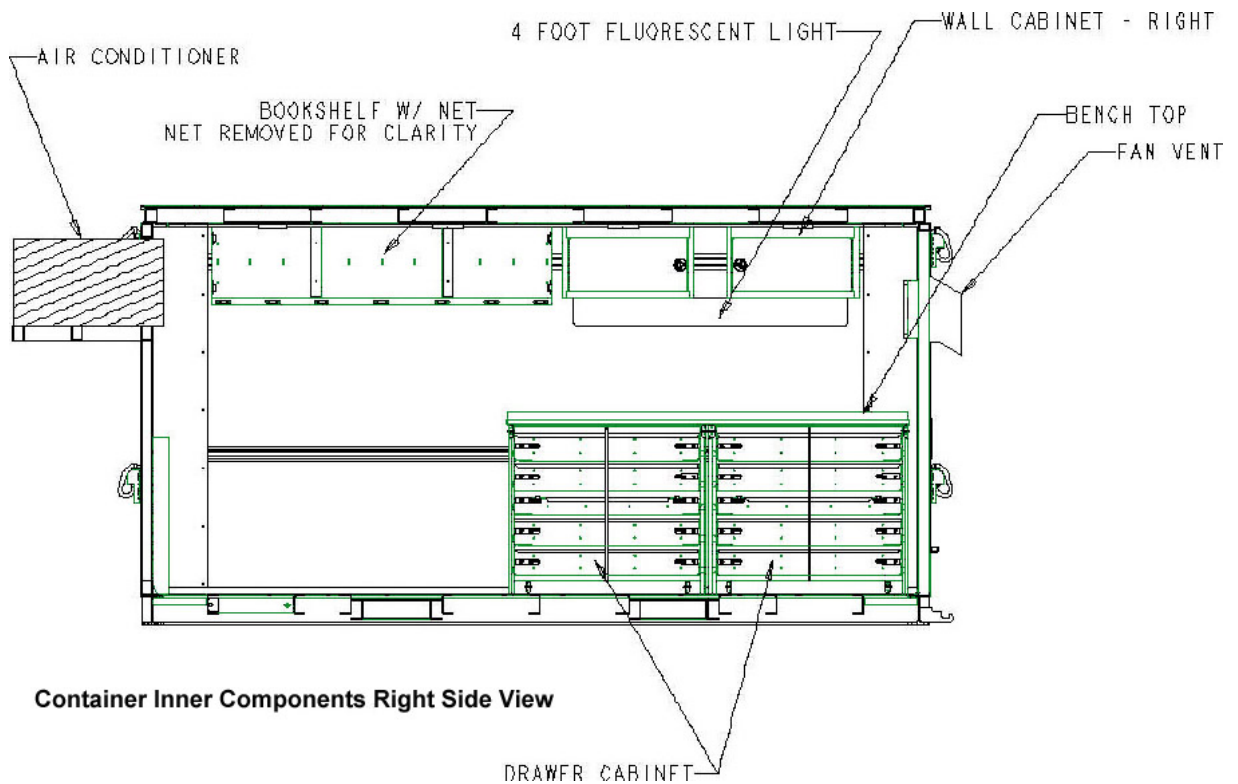
This page was intentionally left blank

**PARTS SUPPORTING INFORMATION**

**FPU® SYSTEMS OPERATION MANUAL  
(INCLUDING REPAIR PARTS & SPECIAL TOOL LIST)  
BOH Modular Workshop Container (MWC)  
BOH FPU Field Pack-up Units**

**Interior Cabinets**

**MWC INTERIOR CABINETS**



**Figure 07 to Figure 10**

RIGHT SIDE CABINET/WORK BENCH

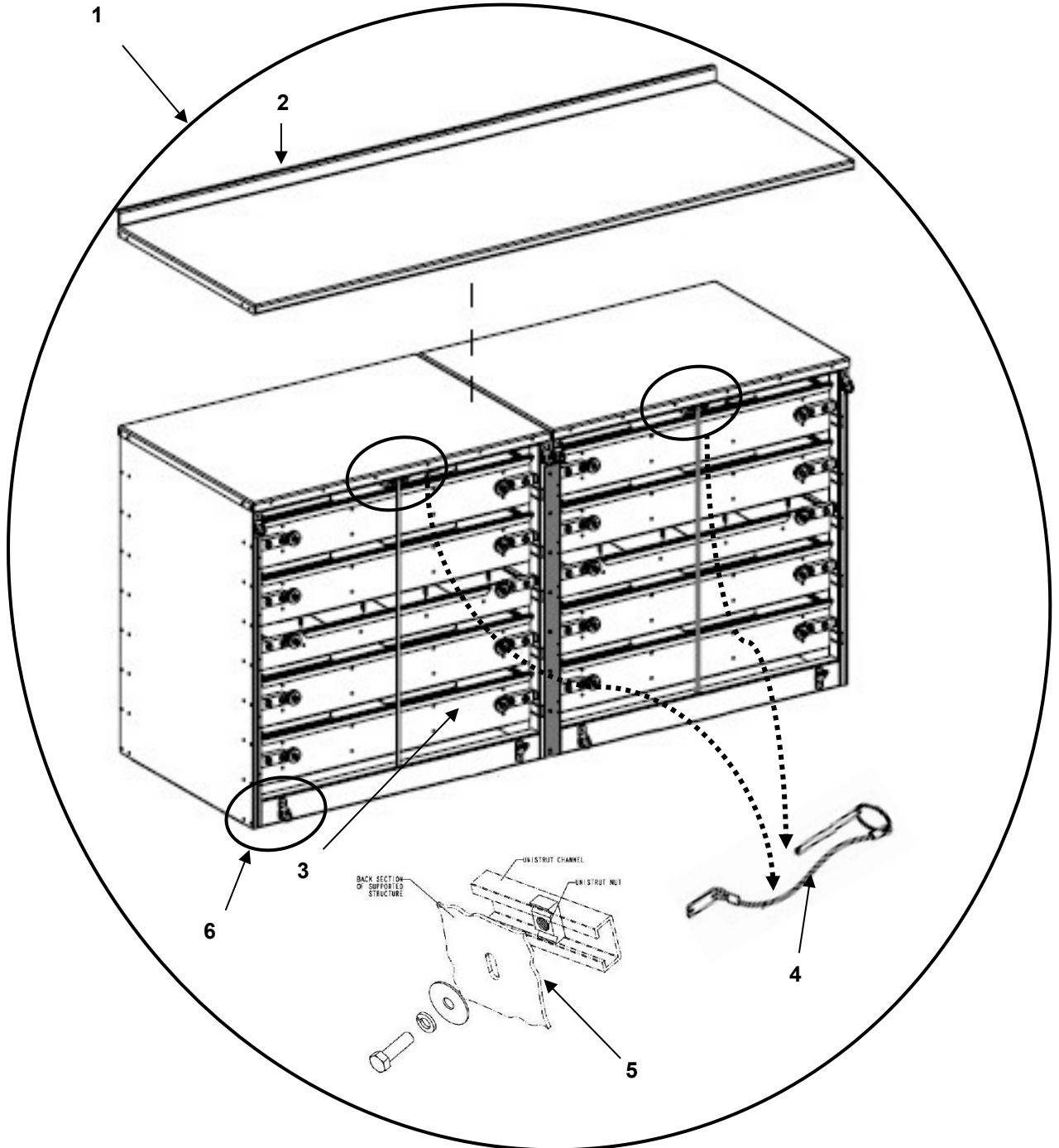


FIGURE 07 RIGHT SIDE CABINET/WORK BENCH

(1) ITEM NO.	(2) NSN	(3) CAGEC	(4) PART NUMBER	(5) DESCRIPTION AND USABLE ON CODE (UOC)	(6) QTY
				<b>GROUP 0201 FIGURE 07 RIGHT SIDE CABINET/ WORK BENCH</b>	
1	Not Assigned	1NSG3	16332520	..RIGHT SIDE DOUBLE CABINET SET 5 DRWAER W/HDWR	1
2	Not Assigned	1NSG3	15988364	..WORKBENCH TOP W/HDWR	1
3	Not Assigned	1NSG3	16332023	...DRAWER RETAINING BAR W/LANYARD	2
4	Not Assigned	1NSG3	15988366	....RETAINING PIN W/LANYARD	2
5	Not Assigned	1NSG3	15988830	....UNISTRUT MOUNTING HDWR KIT	AR
6	Not Assigned	1NSG3	15988367	D RING W/HDWR	4
<b>END OF FIGURE 07</b>					

RIGHT SIDE WORKBENCH DRAWERS

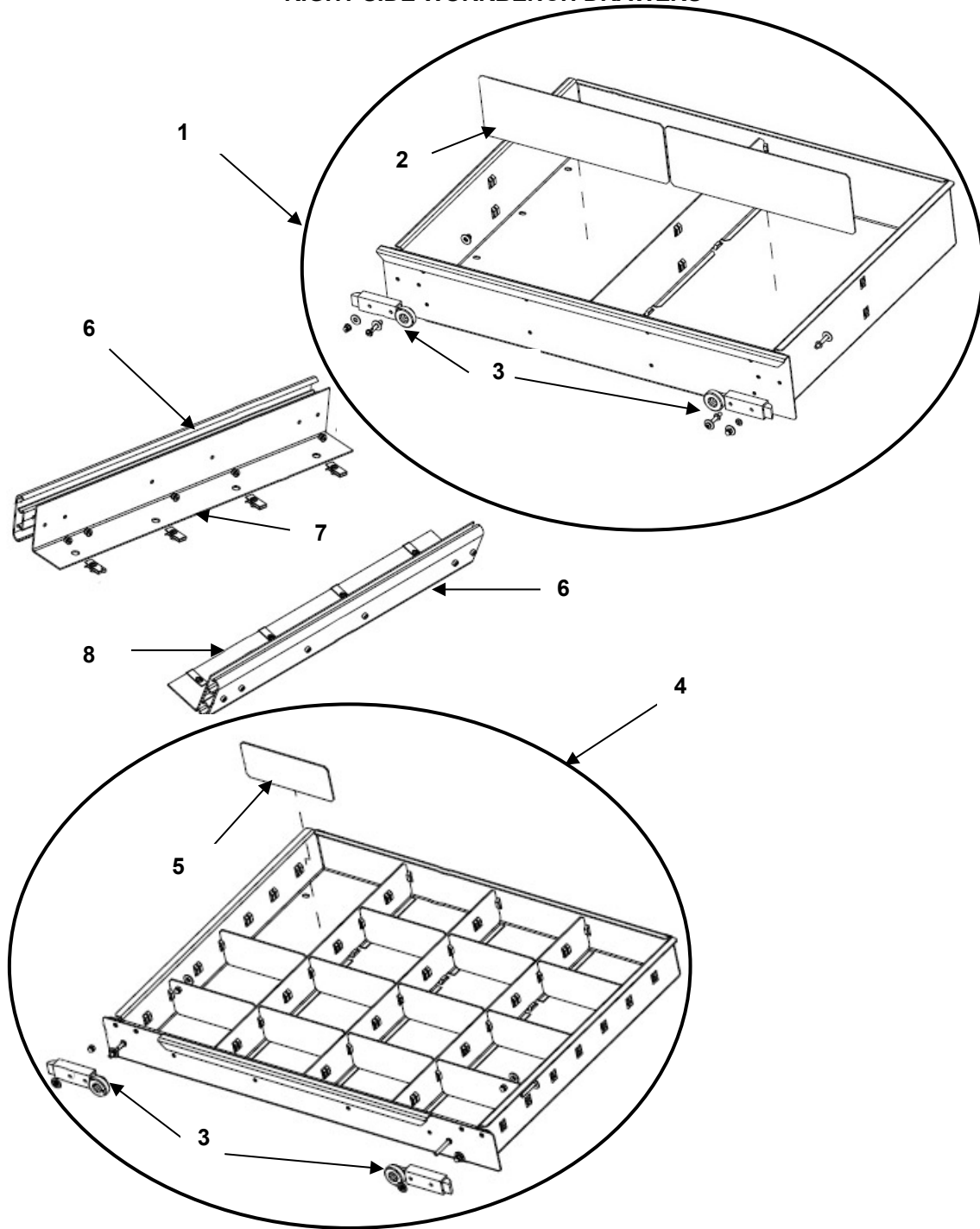


FIGURE 08 RIGHT SIDE WORKBENCH DRAWERS

(1) ITEM NO.	(2) NSN	(3) CAGEC	(4) PART NUMBER	(5) DESCRIPTION AND USABLE ON CODE (UOC)	(6) QTY
				<b>GROUP 020101 FIGURE 08 RIGHT SIDE WORK BENCH DRAWERS</b>	
1	Not Assigned	1NSG3	15988376	.6" CABINET DRAWER W/HDWR	8
2	Not Assigned	1NSG3	16332003	.. 6" DRAWER DIVIDERS	2
3	Not Assigned	1NSG3	15988356	..DRAWER LATCH W/HDWR	2
6	Not Assigned	1NSG3	15988372	..DRAWER SLIDE W/HDWR	2
7	Not Assigned	1NSG3	15988378	...DRAWER LEDGE LEFT	1
8	Not Assigned	1NSG3	15988379	...DRAWER LEDGE RIGHT	1
4	Not Assigned	1NSG3	15988377	.4" CABINET DRAWER W/HDWR	2
5	Not Assigned	1NSG3	16332007	.. 4" DRAWER DIVIDERS SHORT	12
3	Not Assigned	1NSG3	15988356	..DRAWER LATCH W/HDWR	2
6	Not Assigned	1NSG3	15988372	..DRAWER SLIDE W/HDWR	2
7	Not Assigned	1NSG3	15988378	...DRAWER LEDGE LEFT	1
8	Not Assigned	1NSG3	15988379	...DRAWER LEDGE RIGHT	1
<b>END OF FIGURE 08</b>					

RIGHT SIDE BOOK SHELF

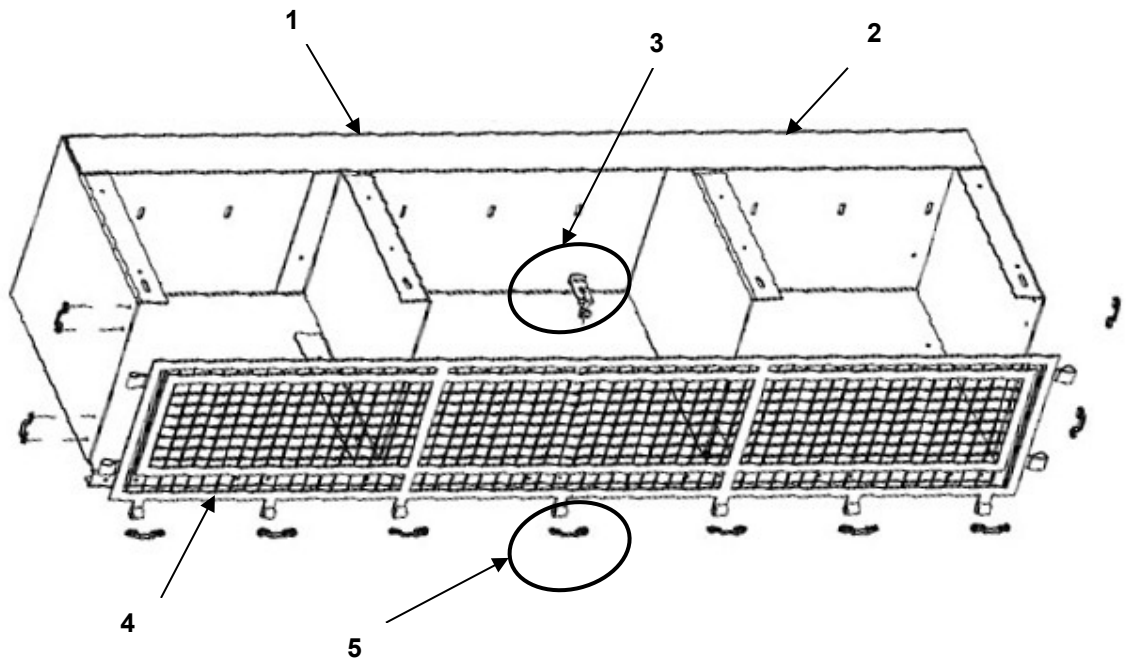


FIGURE 09 RIGHT SIDE BOOK SHELF



(1) ITEM NO.	(2) NSN	(3) CAGEC	(4) PART NUMBER	(5) DESCRIPTION AND USABLE ON CODE (UOC)	(6) QTY
				<b>GROUP 0202 FIGURE 09 RIGHT SIDE BOOK SHELF</b>	
1	Not Assigned	1NSG3	15988552	.BOOK SHELF ASSY W/HDWR	1
2	Not Assigned	1NSG3	16332032	..BOOK SHELF BODY	1
3	Not Assigned	1NSG3	15988362	...NET CENTER HOOK	1
4	Not Assigned	1NSG3	15988360	...NET W/HDWR	1
5	Not Assigned	1NSG3	15988361	...FOOTMAN LOOP	11
<b>END OF FIGURE 09</b>					

UPPER CABINET RIGHT AND LEFT OPEN DOOR

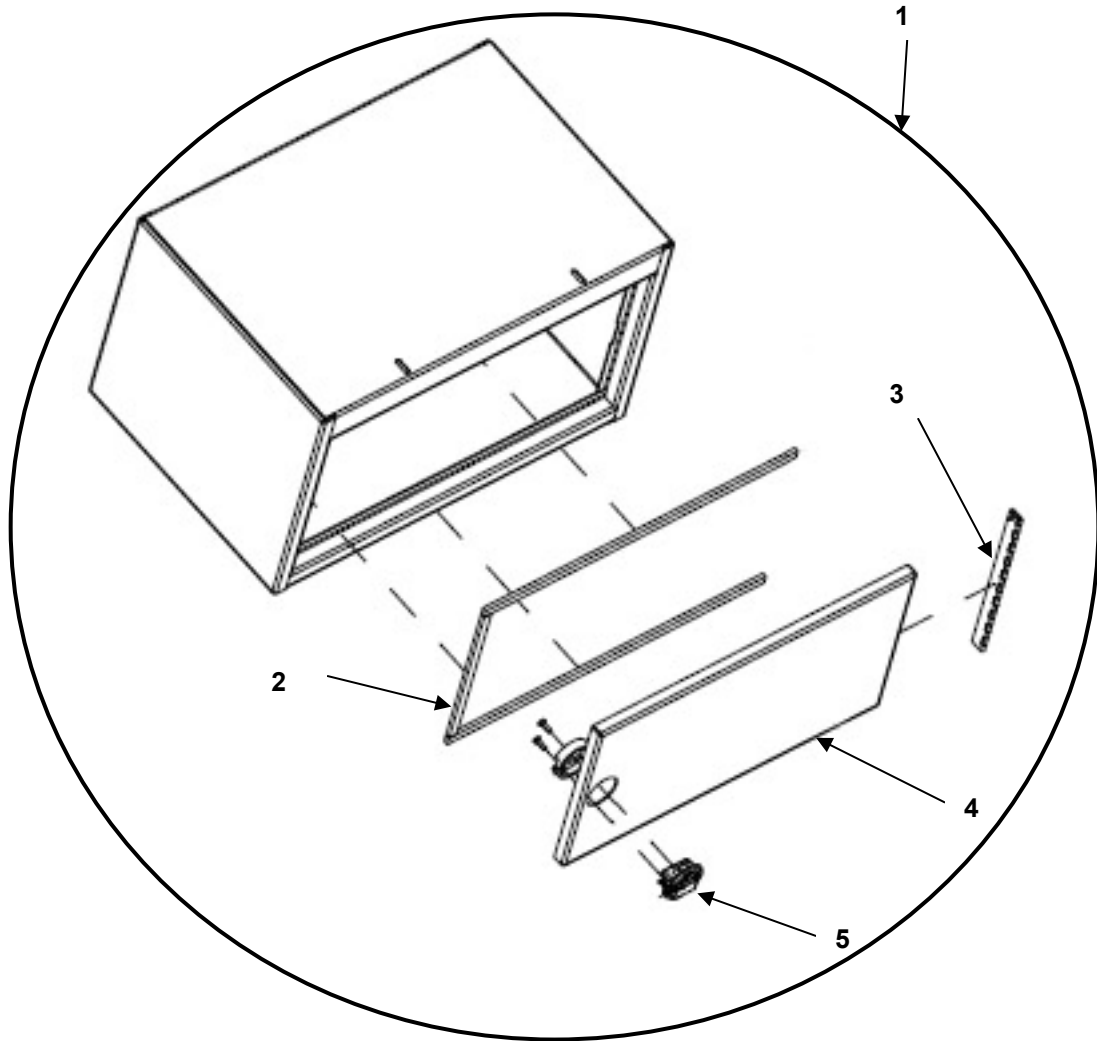
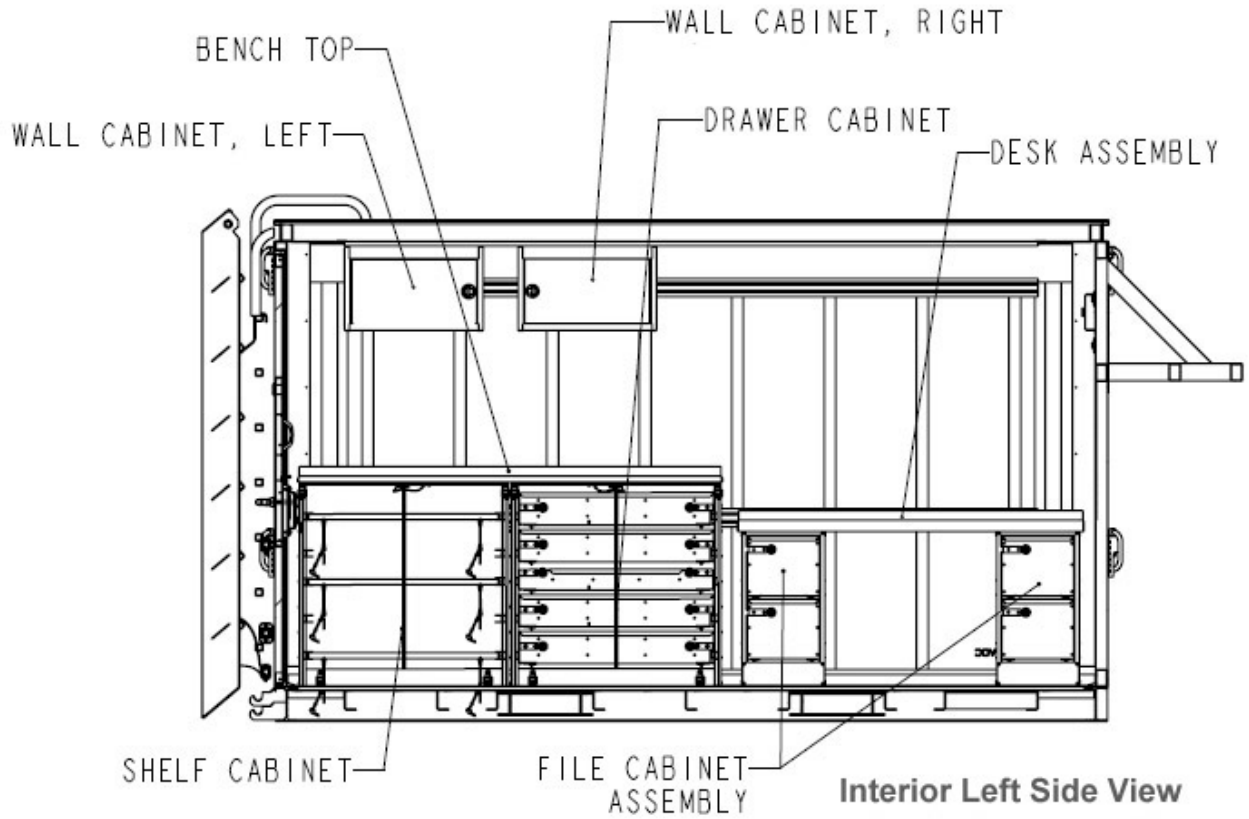


FIGURE 10 UPPER CABINET RIGHT AND LEFT OPEN DOOR

(1) ITEM NO.	(2) NSN	(3) CAGEC	(4) PART NUMBER	(5) DESCRIPTION AND USABLE ON CODE (UOC)	(6) QTY
				<b>GROUP 0203 FIGURE 10 UPPER CABINET LEFT AND RIGHT OPEN DOOR</b>	
1	Not Assigned	1NSG3	15988355	.UPPER CABINET ASSY RGHT OPEN DOOR	1
2	Not Assigned	1NSG3	15988499	..FOAM SEAL 1/4" X 1/2"	1
3	Not Assigned	1NSG3	15988358	..HINGE W/HDWR	1
4	Not Assigned	1NSG3	15988359	..DOOR W/HDWR	1
5	Not Assigned	1NSG3	74100402	Latch PUSH PULL W/HDWR	1
1	Not Assigned	1NSG3	15988503	.UPPER CABINET ASSY LEFT OPEN DOOR	1
2	Not Assigned	1NSG3	15988499	..FOAM SEAL 1/4" X 1/2"	1
3	Not Assigned	1NSG3	15988358	..HINGE W/HDWR	1
4	Not Assigned	1NSG3	15988359	..DOOR W/HDWR	1
5	Not Assigned	1NSG3	74100402	Latch PUSH PULL W/HDWR	1
<b>END OF FIGURE 10</b>					

This page was intentionally left blank

**MWC INTERIOR CABINETS**



**FIGURES 11 to 15**

LEFT SIDE WORK BENCH

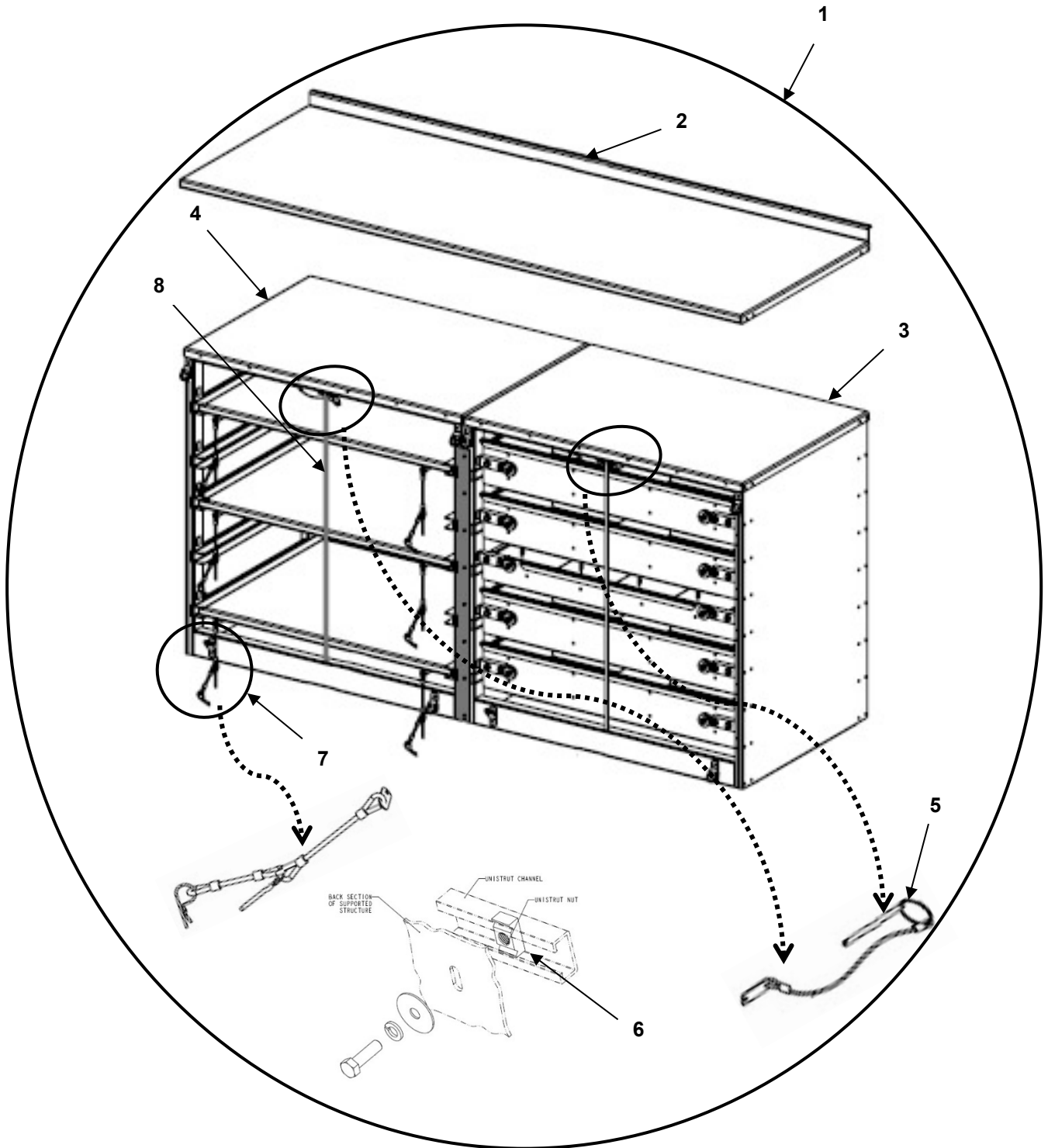


FIGURE 11 LEFT SIDE WORK BENCH

(1) ITEM NO.	(2) NSN	(3) CAGEC	(4) PART NUMBER	(5) DESCRIPTION AND USABLE ON CODE (UOC)	(6) QTY
				<b>GROUP 0204 FIGURE 11 LEFT SIDE CABINETS and WORK BENCH</b>	
1	Not Assigned	1NSG3	16332520	.LEFT SIDE DOUBLE CABINET SET 5 DRAWER AND 3 SHELF UNIT W/HDWR	1
2	Not Assigned	1NSG3	15988364	..WORKBENCH TOP W/HDWR	1
5	Not Assigned	1NSG3	15988366	....RETAINING PIN W/LANYARD	2
6	Not Assigned	1NSG3	15988830	....UNISTRUT MOUNTING HDWR KIT	AR
8	Not Assigned	1NSG3	16332023	...DRAWER RETAINING BAR W/LANYARD	2
3	Not Assigned	1NSG3	15988504	..LEFT SIDE 5 DRAWER CABINET W/HDWR	1
5	Not Assigned	1NSG3	15988366	....RETAINING PIN W/LANYARD	1
6	Not Assigned	1NSG3	15988380	....UNISTRUT MOUNTING HDWR KIT	AR
8	Not Assigned	1NSG3	16332023	...DRAWER RETAINING BAR W/LANYARD	1
4	Not Assigned	1NSG3	15988791	..LEFT SIDE 3 SHELF CABINET W/HDWR	1
5	Not Assigned	1NSG3	15988366	....RETAINING PIN W/LANYARD	1
6	Not Assigned	1NSG3	15988380	....UNISTRUT MOUNTING HDWR KIT	AR
7	Not Assigned	1NSG3	16332111	...PIN AND LANYARD	8
8	Not Assigned	1NSG3	16332023	...DRAWER RETAINING BAR W/LANYARD	1
<b>END OF FIGURE 11</b>					

LEFT SIDE WORKBENCH DRAWERS

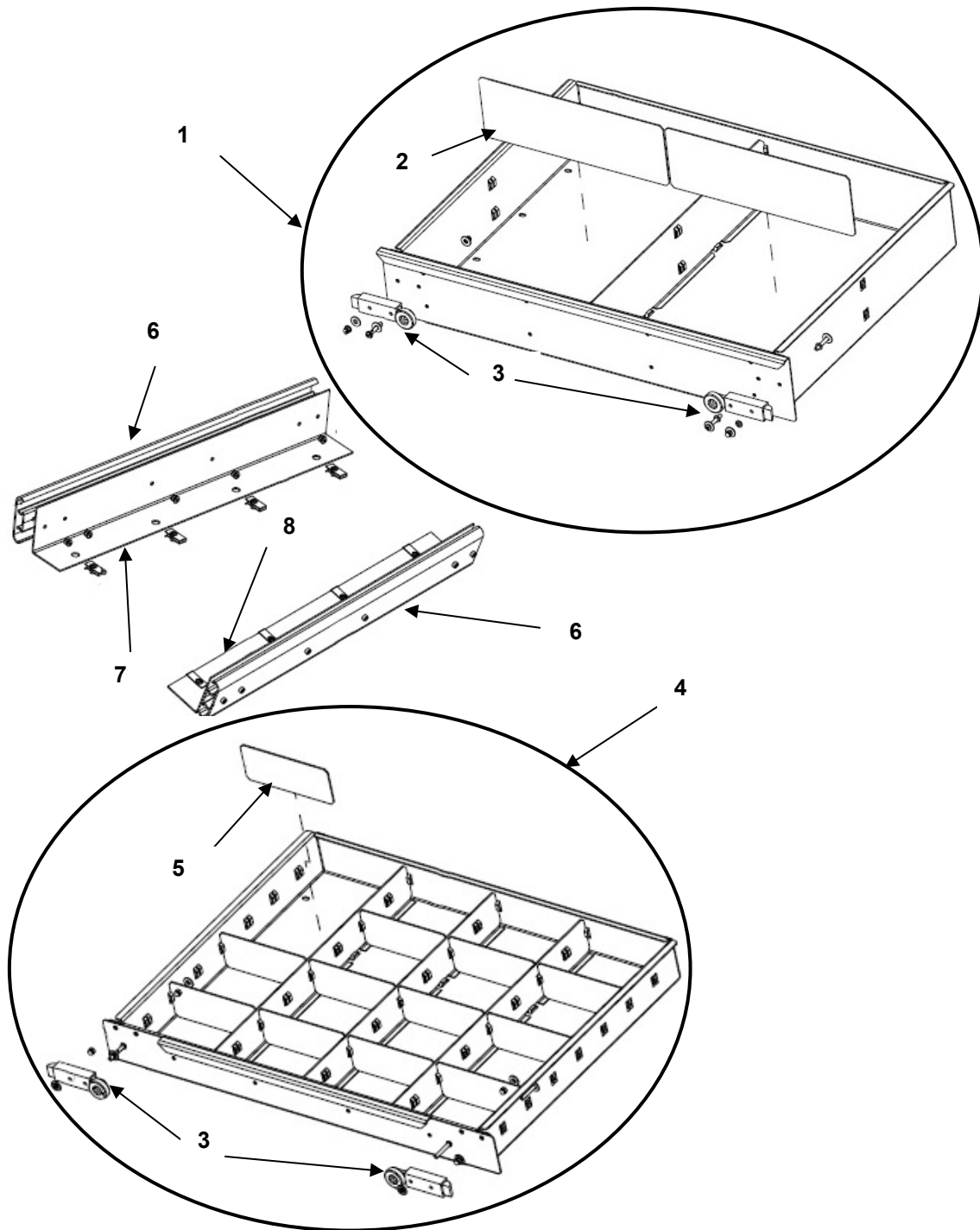


FIGURE 12 LEFT SIDE WORKBENCH DRAWERS



(1) ITEM NO.	(2) NSN	(3) CAGEC	(4) PART NUMBER	(5) DESCRIPTION AND USABLE ON CODE (UOC)	(6) QTY
				<b>GROUP 020401 FIGURE 12 LEFT SIDE WORK BENCH CABINET DRAWERS</b>	
1	Not Assigned	1NSG3	15988376	.6" CABINET DRAWER W/HDWR	8
2	Not Assigned	1NSG3	16332003	.. 6" DRAWER DIVIDERS	2
3	Not Assigned	1NSG3	15988356	..DRAWER LATCH W/HDWR	2
6	Not Assigned	1NSG3	15988372	..DRAWER SLIDE W/HDWR	2
7	Not Assigned	1NSG3	15988378	...DRAWER LEDGE LEFT	1
8	Not Assigned	1NSG3	15988379	...DRAWER LEDGE RIGHT	1
4	Not Assigned	1NSG3	15988377	.4" CABINET DRAWER W/HDWR	2
5	Not Assigned	1NSG3	16332007	.. 4" DRAWER DIVIDERS SHORT	12
3	Not Assigned	1NSG3	15988356	..DRAWER LATCH W/HDWR	2
6	Not Assigned	1NSG3	15988372	..DRAWER SLIDE W/HDWR	2
7	Not Assigned	1NSG3	15988378	...DRAWER LEDGE LEFT	1
8	Not Assigned	1NSG3	15988379	...DRAWER LEDGE RIGHT	1
<b>END OF FIGURE 12</b>					

LEFT SIDE SHELF CABINET

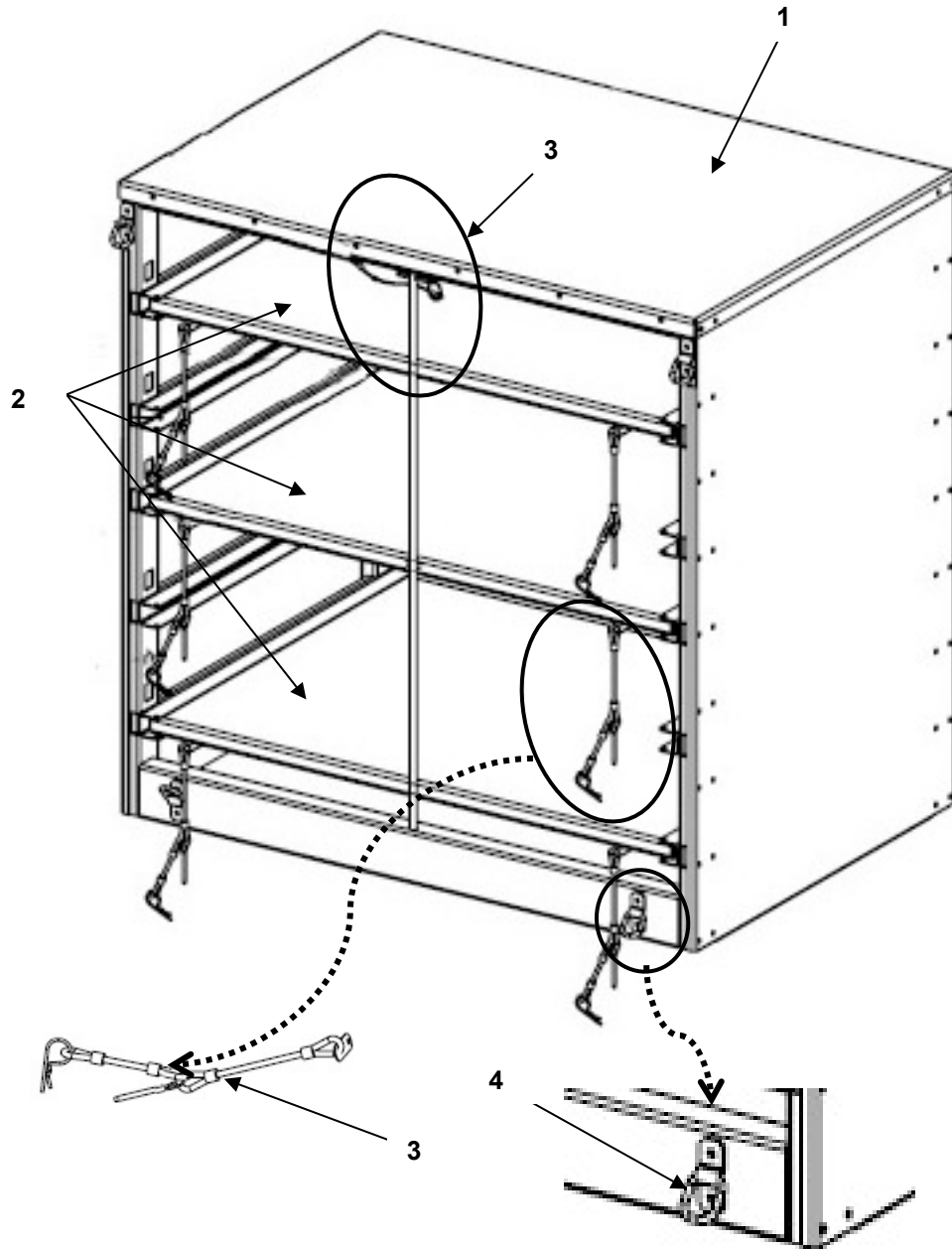


FIGURE 13 LEFT SIDE SHELF CABINET

(1) ITEM NO.	(2) NSN	(3) CAGEC	(4) PART NUMBER	(5) DESCRIPTION AND USABLE ON CODE (UOC)	(6) QTY
				<b>GROUP 0205 FIGURE 13 LEFT SIDE SHELF CABINET</b>	
1	Not Assigned	1NSG3	15988791	.LEFT SIDE 3 SHELF CABINET W/HDWR	1
2	Not Assigned	1NSG3	16332026	.. SHELF ASSY W/LANYARDS & PINS	3
3	Not Assigned	1NSG3	15988365	...RETAINING PIN W/LANYARD	6
4	Not Assigned	1NSG3	15988367	..TIEDOWN RING W/HDWR	2
<b>END OF FIGURE 13</b>					

LEFT SIDE DESK ASSEMBLY

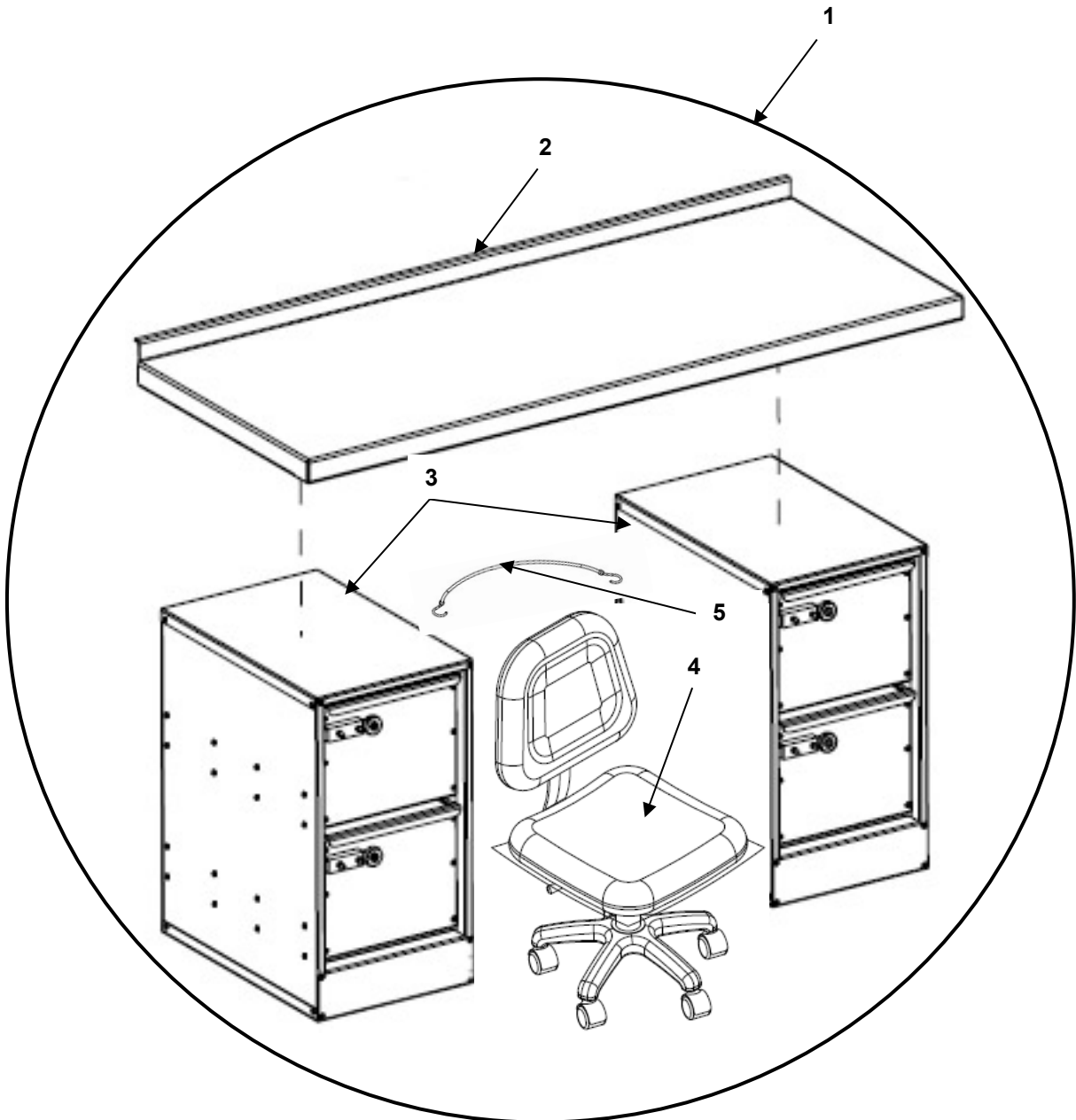


FIGURE 14 LEFT SIDE DESK ASSEMBLY

(1) ITEM NO.	(2) NSN	(3) CAGEC	(4) PART NUMBER	(5) DESCRIPTION AND USABLE ON CODE (UOC)	(6) QTY
				<b>GROUP 0206 FIGURE 14 LEFT SIDE DESK ASSEMBLY</b>	
1	Not Assigned	1NSG3	15988784	.COMPLETE DESK ASSY W/HDWR	1
2	Not Assigned	1NSG3	15988785	..DESK TOP	1
3	Not Assigned	1NSG3	15988783	..FILE CABINET W/HDWR	2
4	Not Assigned	1NSG3	91020102	.Swivel Chair	1
5	Not Assigned	1NSG3	46140142	.. Restraint Strap	1
<b>END OF FIGURE 14</b>					

DESK FILE DRAWERS

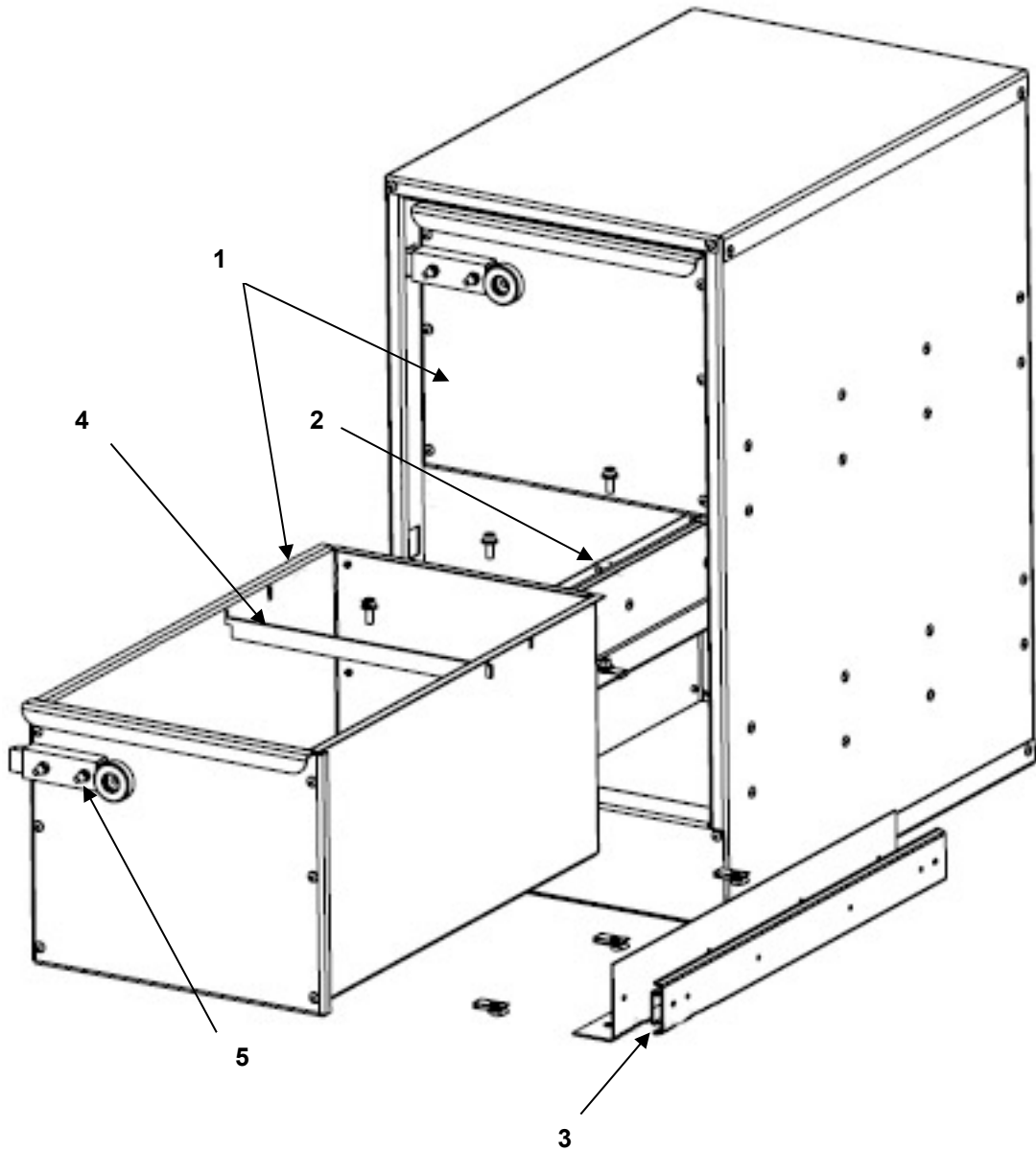


FIGURE 15 DESK FILE DRAWERS

(1) ITEM NO.	(2) NSN	(3) CAGEC	(4) PART NUMBER	(5) DESCRIPTION AND USABLE ON CODE (UOC)	(6) QTY
				<b>GROUP 020601 FIGURE 15 DESK FILE DRAWERS W/HDWR</b>	
1	Not Assigned	1NSG3	15988506	..DRAWER ASSY W/HDWR	2
2	Not Assigned	1NSG3	15988508	..LEFT DRAWER SLIDE W/HDWR	1
3	Not Assigned	1NSG3	15988507	..RIGHT DRAWER SLIDE W/HDWR	1
4	Not Assigned	1NSG3	16335615	..DRAWER CROSS BAR	2
5	Not Assigned	1NSG3	15988356	..SLAM LATCH	1
<b>END OF FIGURE 15</b>					

This page was intentionally left blank



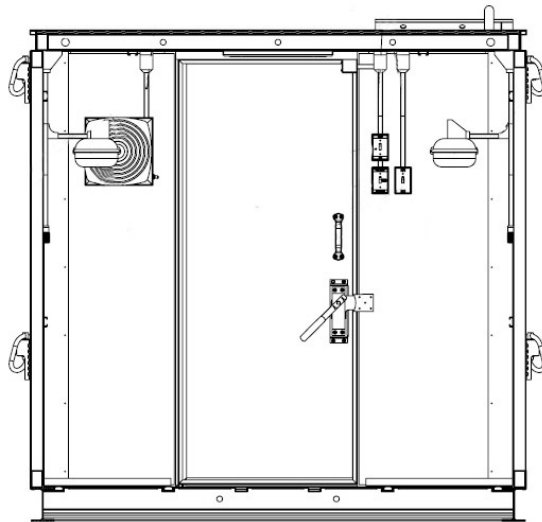
---

**PARTS SUPPORTING INFORMATION**

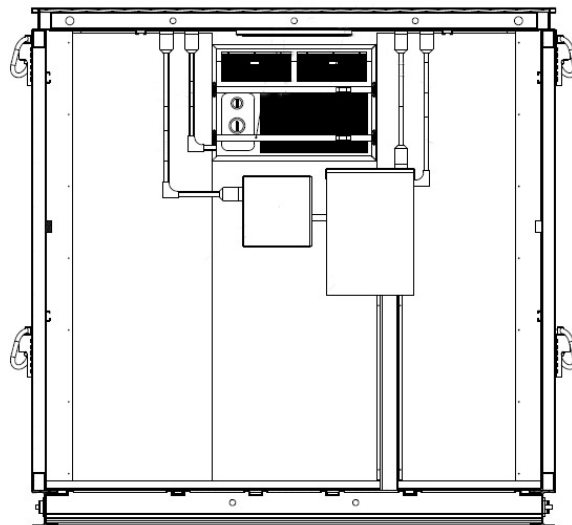
**FPU® SYSTEMS OPERATION MANUAL  
(INCLUDING REPAIR PARTS & SPECIAL TOOL LIST)  
BOH Modular Workshop Container (MWC)  
BOH FPU Field Pack-up Units**

**Electrical Repair Parts**

---

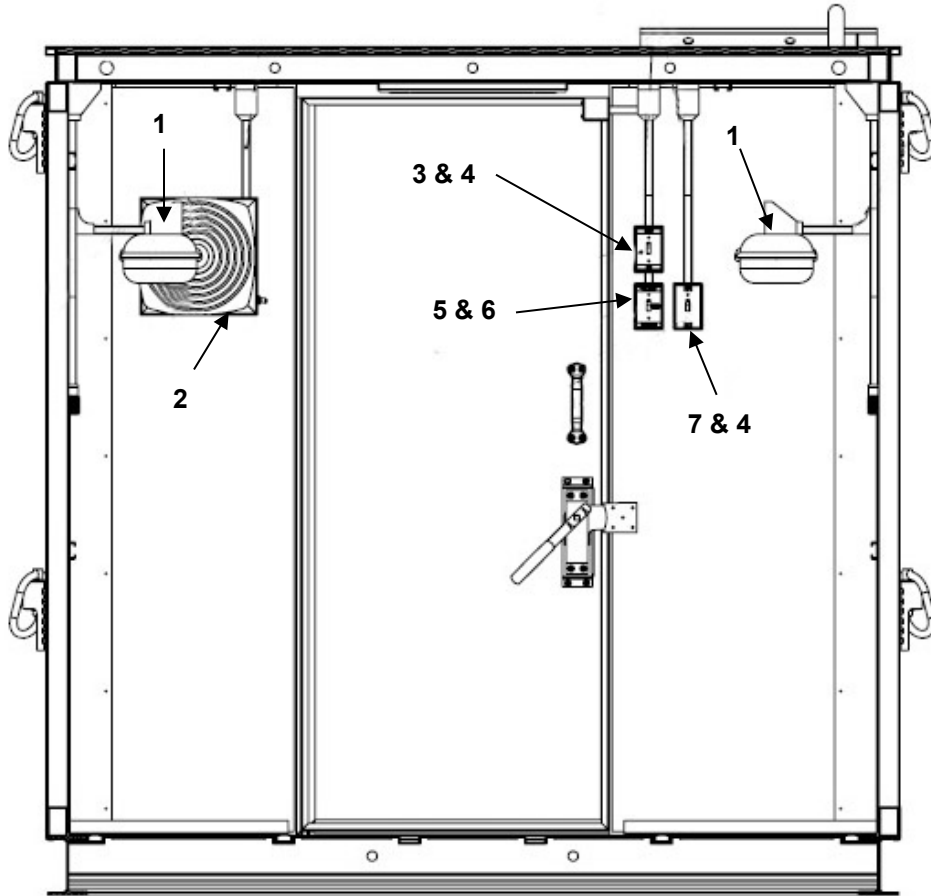


**INTERIOR COMPONENT LAYOUT FRONT AND REAR**



**Figure 16 to Figure 23**

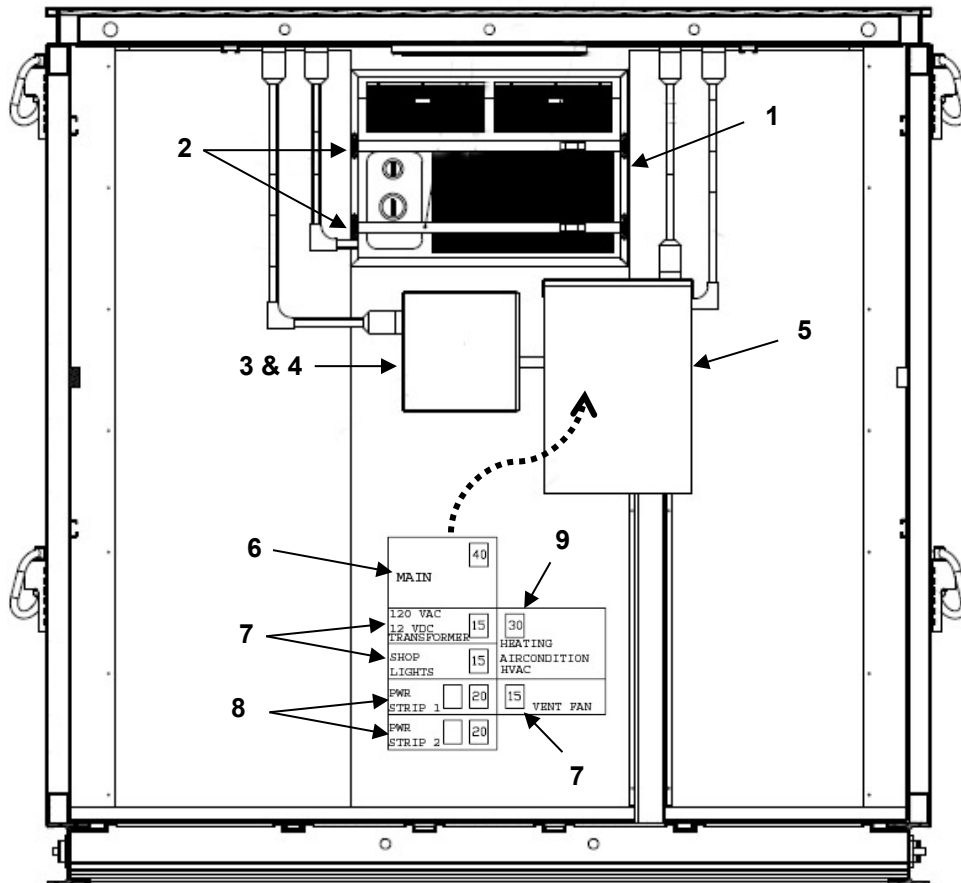
**OLDER INTERIOR FRONT ELECTRICAL COMPONENTS**



**FIGURE 16 OLDER INTERIOR ELECTRICAL COMPONENTS  
FRONT INTERIOR VIEW**

(1) ITEM NO.	(2) NSN	(3) CAGEC	(4) PART NUMBER	(5) DESCRIPTION AND USABLE ON CODE (UOC)	(6) QTY
				<b>GROUP 0301 FIGURE 16 INTERIOR ELECTRICAL COMPONENTS FRONT INTERIOR VIEW</b>	
1	Not Assigned	1NSG3	15988404	.WORKBENCH FLOURESCENT LIGHTS W/HDWR	2
2	Not Assigned	1NSG3	15988395	.EXHAUST FAN W/HDWR	1
3	Not Assigned	1NSG3	15988396	.LIGHT SWITCH COVER W/LABELS RED/WHITE	1
4	Not Assigned	1NSG3	72270101	..SINGLE POLE 15A/120V SWITCH	2
5	Not Assigned	1NSG3	15988397	.LIGHT SWITCH COVER W/LABELS DOOR ACTIVATED-OFF- CONTINUOUS	1
6	Not Assigned	1NSG3	72270133	..SINGLE POLE 20A/120V 3-WAY SWITCH	1
7	Not Assigned	1NSG3	15988398	.LIGHT SWITCH COVER W/LABELS ON-OFF	1
<b>END OF FIGURE 16</b>					

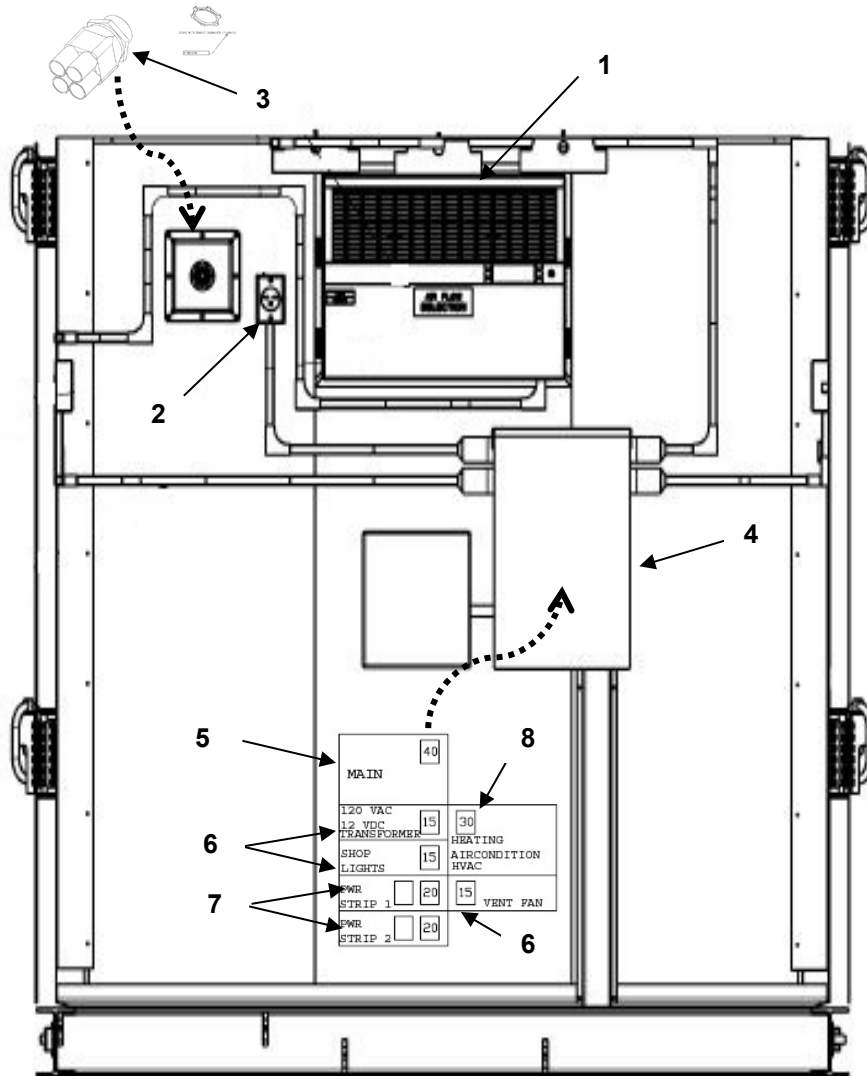
**OLDER INTERIOR REAR ELECTRICAL COMPONENTS**  
**Prior to MWC SERIAL # AC 15002028-4226**



**FIGURE 17 OLDER INTERIOR ELECTRICAL COMPONENTS**  
**REAR INTERIOR VIEW**

(1) ITEM NO.	(2) NSN	(3) CAGEC	(4) PART NUMBER	(5) DESCRIPTION AND USABLE ON CODE (UOC)	(6) QTY
				<b>GROUP 0302 FIGURE 17 INTERIOR ELECTRICAL COMPONENTS REAR INTERIOR VIEW Prior to MWC SERIAL # AC 15002028-4226</b>	
1	Not Assigned	1NSG3	15220802	.HVAC HEATER/ AIR CONDITIONER UNIT 18000 BTU EM18J34B *DISCONTINUED*	1
2	Not Assigned	1NSG3	15988450	..HVAC RETAINING STRAPS W/HDWR	2
3	Not Assigned	1NSG3	15312430	.TRANSFORMER PANEL BOX	1
4	Not Assigned	1NSG3	15220204	..TRANSFORMER 120 VAC to 12VDC	1
5	Not Assigned	1NSG3	72050203	..CIRCUIT BREAKER PANEL BOX	1
6	Not Assigned	1NSG3	72150401	..40 AMP MAIN CIRCUIT BREAKER	1
7	Not Assigned	1NSG3	72150215	..15 AMP CIRCUIT BREAKER	3
8	Not Assigned	1NSG3	72150204	..20 AMP CIRCUIT BREAKER	2
9	Not Assigned	1NSG3	72150302	..30 AMP CIRCUIT BREAKER	1
<b>END OF FIGURE 17</b>					

**NEW INTERIOR REAR VIEW ELECTRICAL COMPONENTS**  
 Beginning with MWC Serial Number AC 15002028-4226



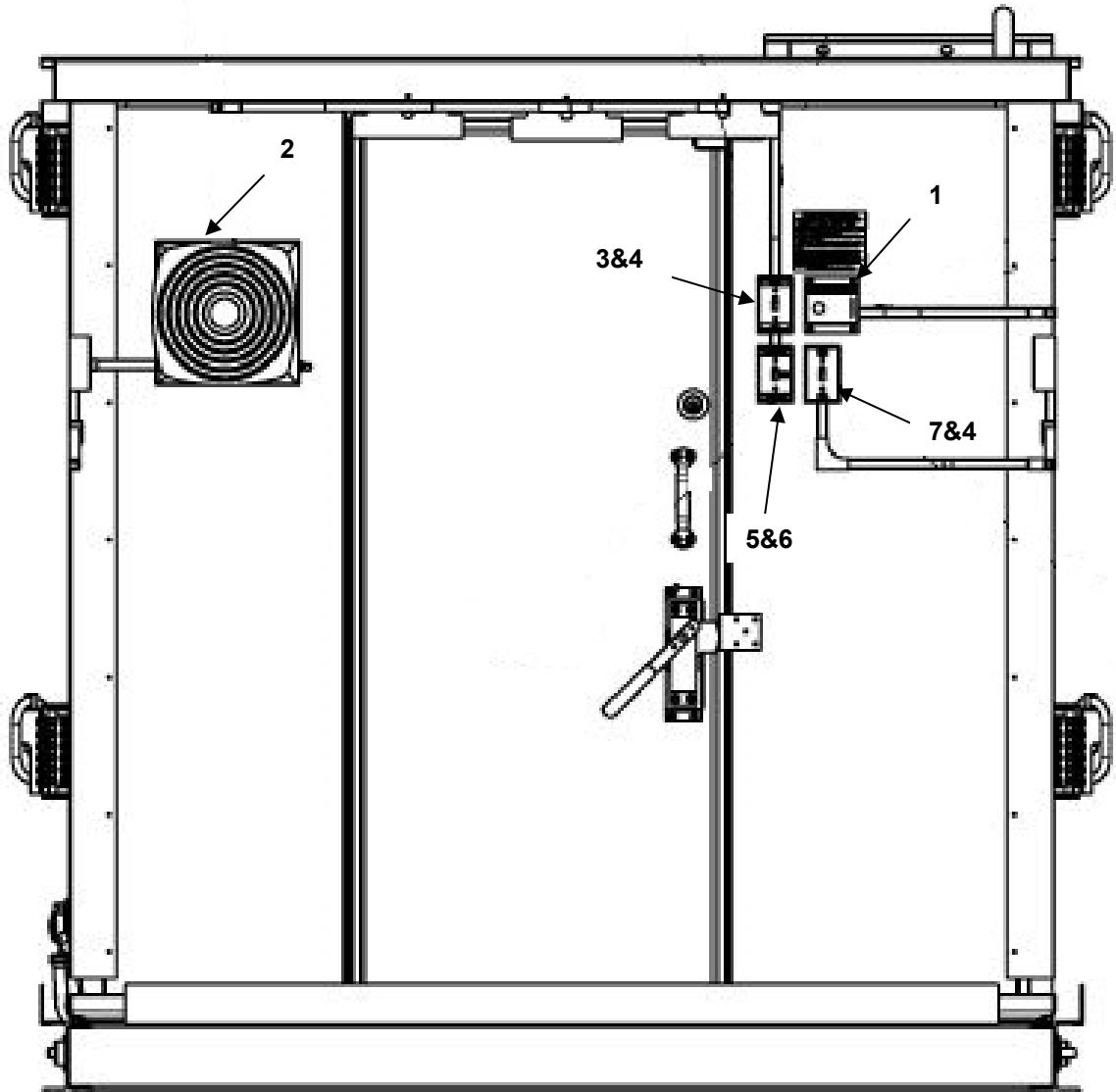
**FIGURE 18 NEW INTERIOR ELECTRICAL COMPONENTS**  
**REAR INTERIOR VIEW**

(1) ITEM NO.	(2) NSN	(3) CAGEC	(4) PART NUMBER	(5) DESCRIPTION AND USABLE ON CODE (UOC)	(6) QTY
				<b>GROUP 0302 FIGURE 18 INTERIOR ELECTRICAL COMPONENTS Beginning with MWC Serial Number AC 15002028-4226</b>	
1	Not Assigned	1NSG3	15220819	.HVAC HEATER/ AIR CONDITIONER UNIT 18000 BTU EM18M34 **DISCONTINUED**	1
1	Not Assigned	1NSG3	15220819	.HVAC HEATER/ AIR CONDITIONER UNIT 20000 BTU EM18N34 **CURRENT MODEL**	1
2	Not Assigned	1NSG3	72250106	.AC OUTLET 30/240 630R	1
3	Not Assigned	1NSG3	71241316	.COM CABLE PASSTHROUGH	1
4	Not Assigned	1NSG3	72050203	.CIRCUIT BREAKER PANEL BOX	1
5	Not Assigned	1NSG3	72150401	..40 AMP MAIN CIRCUIT BREAKER	1
6	Not Assigned	1NSG3	72150215	..15 AMP CIRCUIT BREAKER	3
7	Not Assigned	1NSG3	72150204	..20 AMP CIRCUIT BREAKER	2
8	Not Assigned	1NSG3	72150302	..30 AMP CIRCUIT BREAKER	1
<b>END OF FIGURE 18</b>					

**NOTE**

HVAC Model EM18M34 has been discontinued. The current version is model EM18N34 beginning after serial number AC 15002028-04297.

**NEW INTERIOR FRONT VIEW ELECTRICAL COMPONENTS**  
Beginning with MWC Serial Number AC 15002028-4226

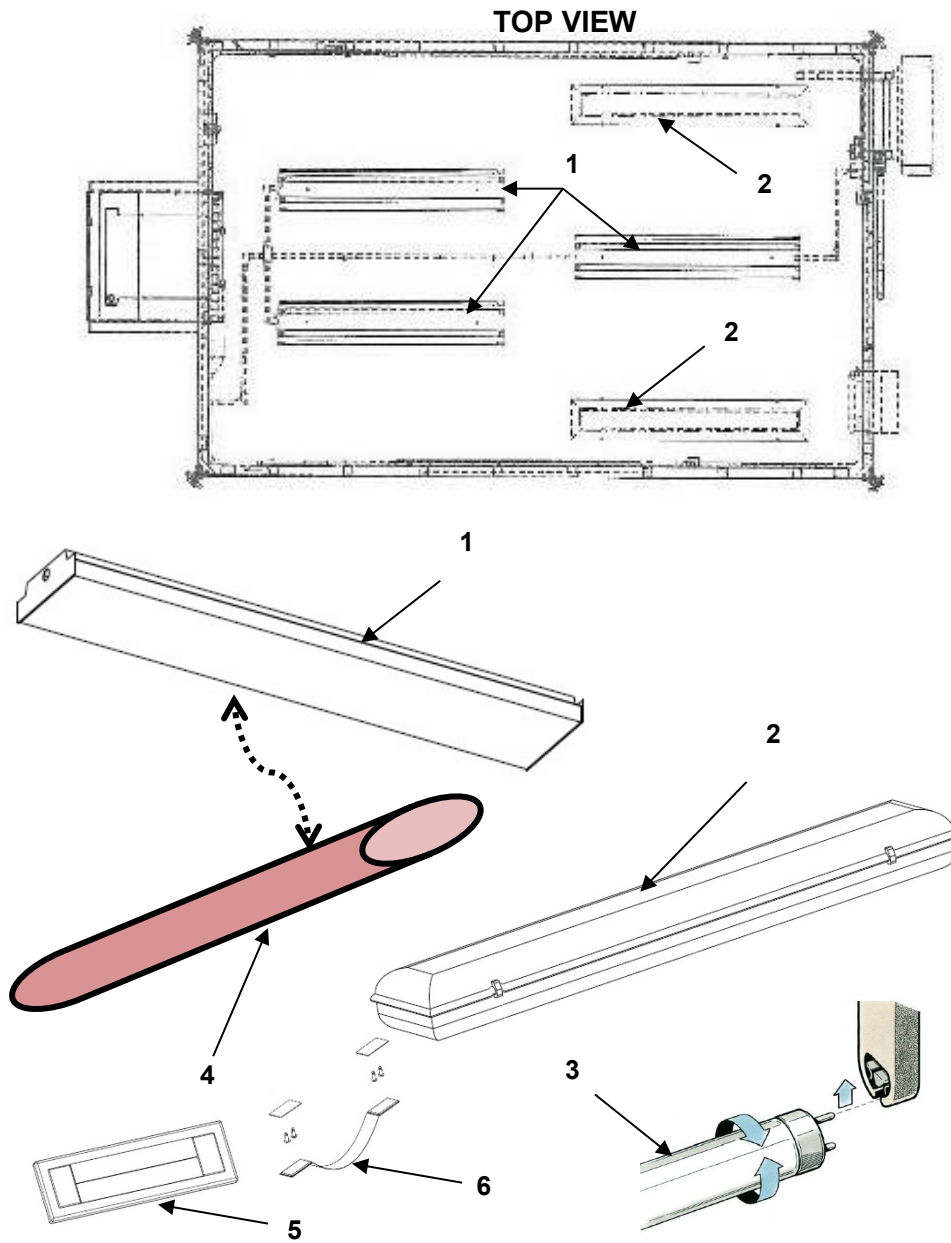


**FIGURE 19 NEW INTERIOR ELECTRICAL COMPONENTS**  
**FRONT INTERIOR VIEW**



(1) ITEM NO.	(2) NSN	(3) CAGEC	(4) PART NUMBER	(5) DESCRIPTION AND USABLE ON CODE (UOC)	(6) QTY
				<b>GROUP 0301 FIGURE 19 INTERIOR ELECTRICAL COMPONENTS Beginning with MWC Serial Number AC15002028-04207</b>	
1	Not Assigned	1NSG3	15980223	.THERMOSTAT WHITE ROGERS #1F58N-444	1
2	Not Assigned	1NSG3	15988395	.EXHAUST FAN W/HDWR	1
3	Not Assigned	1NSG3	15988396	.LIGHT SWITCH COVER W/LABELS RED/WHITE	1
4	Not Assigned	1NSG3	72270101	..SINGLE POLE 15A/120V SWITCH	2
5	Not Assigned	1NSG3	15988397	.LIGHT SWITCH COVER W/LABELS DOOR ACTIVATED-OFF- CONTINUOUS	1
6	Not Assigned	1NSG3	72270133	..SINGLE POLE 20A/120V 3-WAY SWITCH	1
7	Not Assigned	1NSG3	15988398	.LIGHT SWITCH COVER W/LABELS ON-OFF	1
<b>END OF FIGURE 19</b>					

**NEW OVERHEAD 120 VAC FLORESCENT LIGHTS**  
 Beginning with MWC Serial Number AC15002028-04207



**FIGURE 20 NEW OVERHEAD 120 VAC FLUORESCENT LIGHTS**

**NOTE**

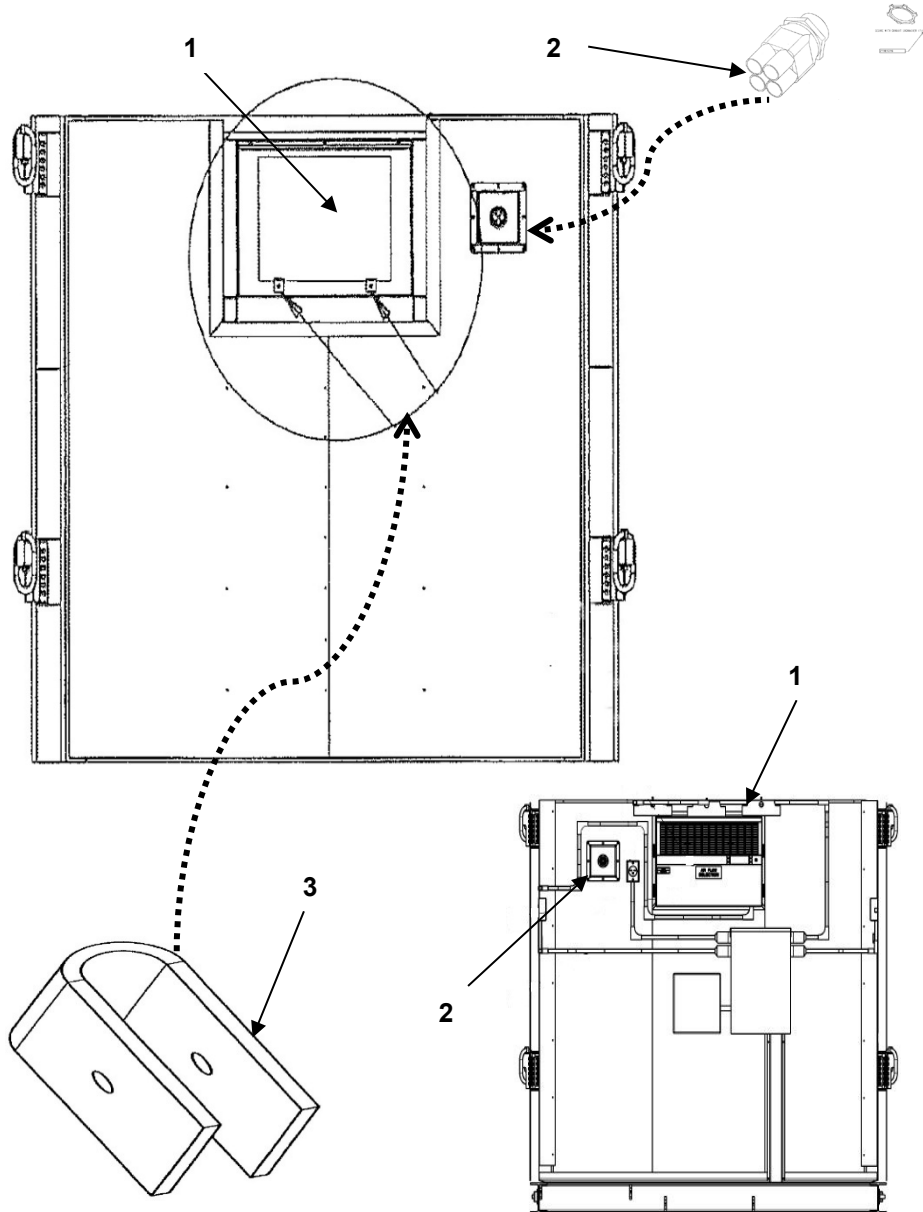
Items 5 & 6 are the older Red/White 12 VDC overhead light fixture prior to MWC Serial Number AC15002028-04207.

(1) ITEM NO.	(2) NSN	(3) CAGEC	(4) PART NUMBER	(5) DESCRIPTION AND USABLE ON CODE (UOC)	(6) QTY
				<b>GROUP 0303 FIGURE 20 New Overhead Lighting system Beginning with MWC Serial Number AC15002028-04207</b>	
1	Not Assigned	1NSG3	15980209	.OVERHEAD 120 VAC FLUORESCENT LIGHT FIXTURES	3
3	Not Assigned	1NSG3	70380134	..FLUORESCENT TUBE 4 FT	2
4	Not Assigned	1NSG3	70380100	...RED SLEEVE 4 FT	1
2	Not Assigned	1NSG3	15988404	.WORKBENCH 120 VAC FLUORESCENT LIGHT FIXTURES	2
3	Not Assigned	1NSG3	70380134	..FLUORESCENT tube	2
5	Not Assigned	1NSG3	15988751	.OLDER RED/WHITE 12 VDC LIGHT FIXTURE	1
6	Not Assigned	1NSG3	15988553	.OLDER WHITE/WHITE 12VDC LIGHT FIXTURE	1
<b>END OF FIGURE 20</b>					

**NOTE**

Items 5 & 6 are the older Red/White 12 VDC overhead light fixture prior to MWC Serial Number AC15002028-04207.

**NEW EXTERIOR REAR ELECTRICAL COMPONENTS**  
Beginning with MWC Serial Number AC 15002028-4226



**FIGURE 21 NEW EXTERIOR ELECTRICAL COMPONENTS**  
**REAR EXTERIOR VIEW**

(1) ITEM NO.	(2) NSN	(3) CAGEC	(4) PART NUMBER	(5) DESCRIPTION AND USABLE ON CODE (UOC)	(6) QTY
				<b>GROUP 0304 FIGURE 21 EXTERIOR ELECTRICAL COMPONENTS</b>	
1	Not Assigned	1NSG3	15220819	.HVAC HEATER/ AIR CONDITIONER UNIT 20,000 BTU EM18N34B **DISCONTINUED**	1
1	Not Assigned	1NSG3	15220819	.HVAC HEATER/ AIR CONDITIONER UNIT 20,000 BTU KEM18A34A **CURRENT MODEL**	1
2	Not Assigned	1NSG3	71241316	.COM CABLE PASSTHROUGH	1
3	Not Assigned	1NSG3	16330197	.HVAC MOUNTING CLIPS	2
<b>END OF FIGURE 21</b>					

LIGHTING INTERRUPTER DOOR SWITCH

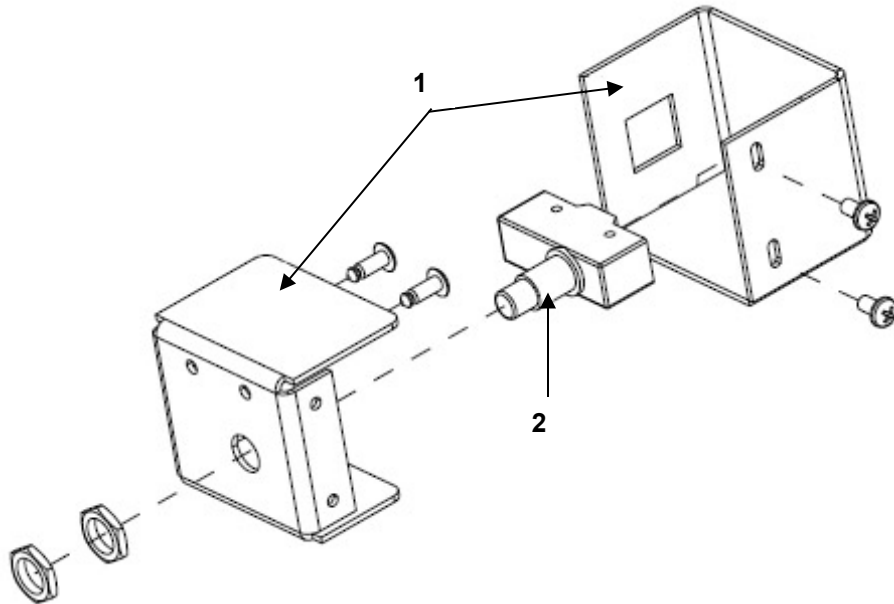


FIGURE 22 LIGHTING INTERRUPTER DOOR SWITCH

(1) ITEM NO.	(2) NSN	(3) CAGEC	(4) PART NUMBER	(5) DESCRIPTION AND USABLE ON CODE (UOC)	(6) QTY
				<b>GROUP 0305 FIGURE 22 LIGHTING INTERRUPTER DOOR SWITCH</b>	
1	Not Assigned	1NSG3	15988476	.DOOR SWITCH MOUNTING BRACKET W/HDWR KIT	2
2	Not Assigned	1NSG3	72270504	..SWITCH W/HDWR OMRON #20GQ-B	1
<b>END OF FIGURE 22</b>					

HVAC RETROFIT KIT

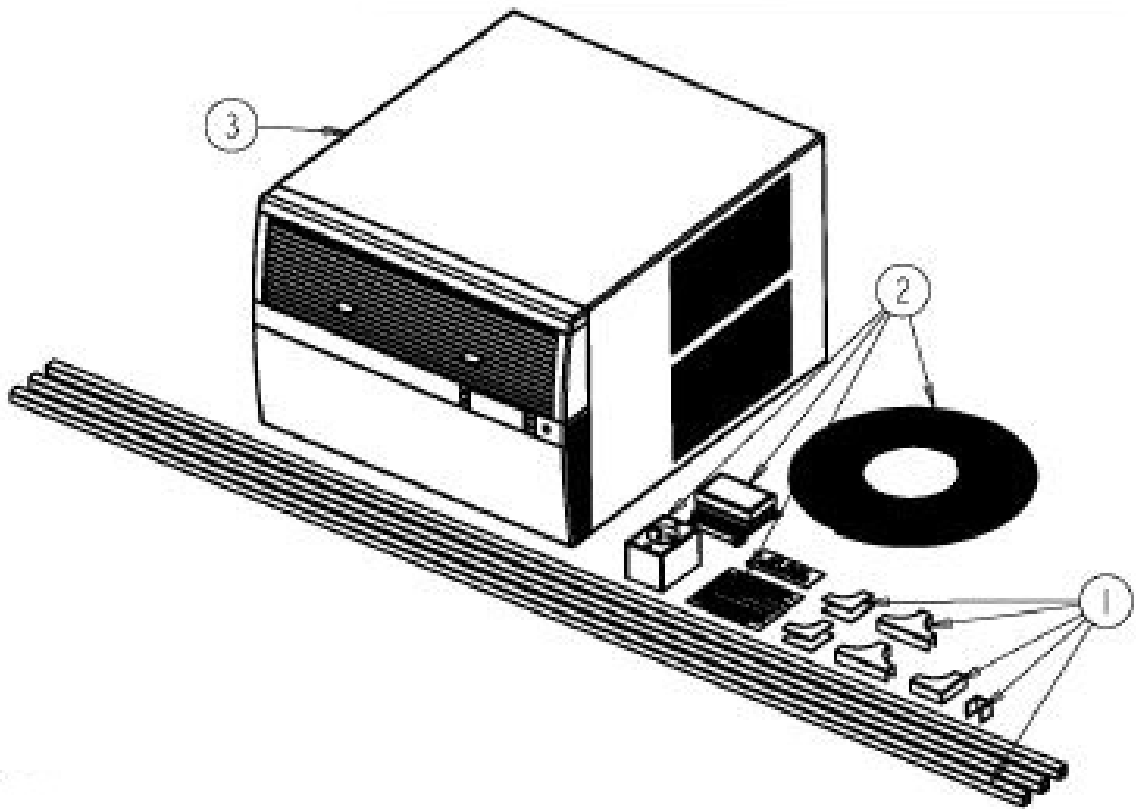


FIGURE 23 HVAC RETROFIT KIT



(1) ITEM NO.	(2) NSN	(3) CAGEC	(4) PART NUMBER	(5) DESCRIPTION AND USABLE ON CODE (UOC)	(6) QTY
				<b>GROUP 0306 FIGURE 23 HVAC RETROFIT KIT</b>	
NA	Not Assigned	1NSG3	15988451	..HVAC RETROFIT KIT	1
1	Not Assigned	1NSG3	15980303	..RACEWAY KIT 12VDC/120VAC	1
2	Not Assigned	1NSG3	15980223	..THERMOSTAT KIT	1
3	Not Assigned	1NSG3	15220819	..HVAC UNIT	1
<b>END OF FIGURE 23</b>					

**END OF WORK PACKAGE**

This page was intentionally left blank

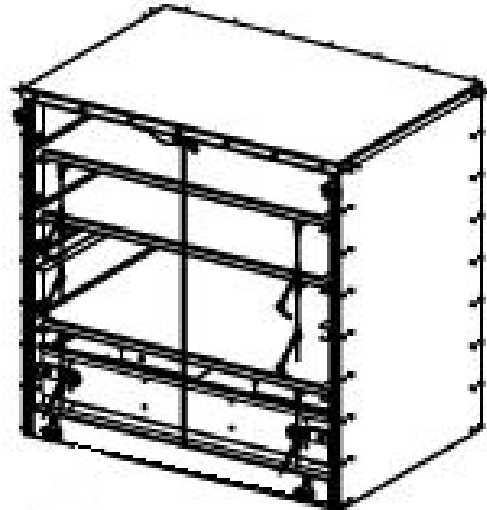
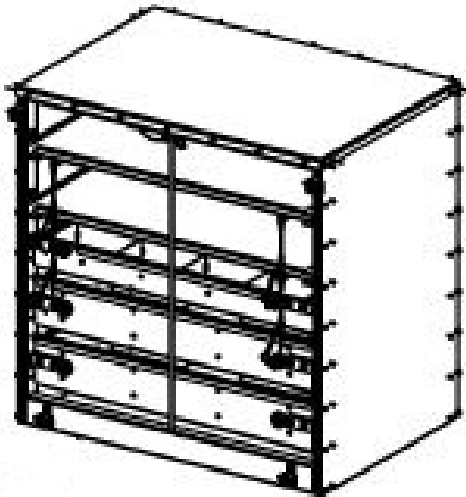
---

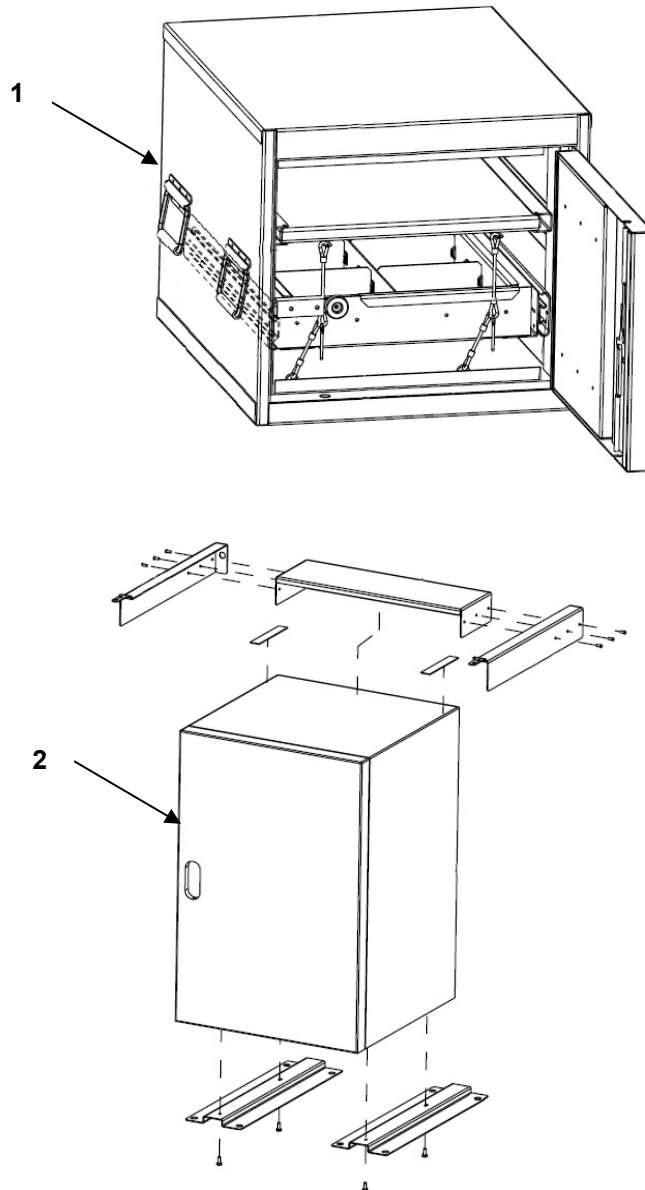
**PARTS SUPPORTING INFORMATION****FPU® SYSTEMS OPERATION MANUAL  
(INCLUDING REPAIR PARTS & SPECIAL TOOL LIST)  
BOH Modular Workshop Container (MWC)  
BOH FPU Field Pack-up Units****MWC OPTIONAL ACCESSORIES**

---

**NOTE**

The optional refrigerator and vault are factory installed and must be requested when ordering the MWC, to provide the installed supporting brackets. Additional cabinets can also be ordered.

**Figures 24 and 25**

**MWC OPTIONAL VAULT AND REFRIGERATOR****FIGURE 24 MWC OPTIONAL VAULT AND REFRIGERATOR****NOTE**

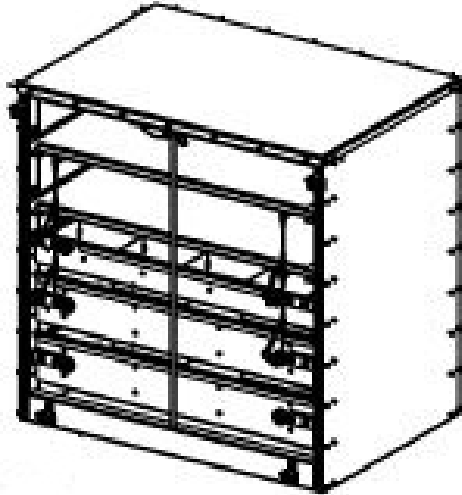
The optional refrigerator and vault are factory installed and must be requested when ordering the MWC, to provide the installed supporting brackets.

(1) ITEM NO.	(2) NSN	(3) CAGEC	(4) PART NUMBER	(5) DESCRIPTION AND USABLE ON CODE (UOC)	(6) QTY
				<b>GROUP 0401 FIGURE 24 Optional Vault and Refrigerator</b>	
1	Not Assigned	1NSG3	15525102	Optional Vault	1
2	Not Assigned	1NSG3	15525101	Optional Refrigerator	1
<b>END OF FIGURE 24</b>					

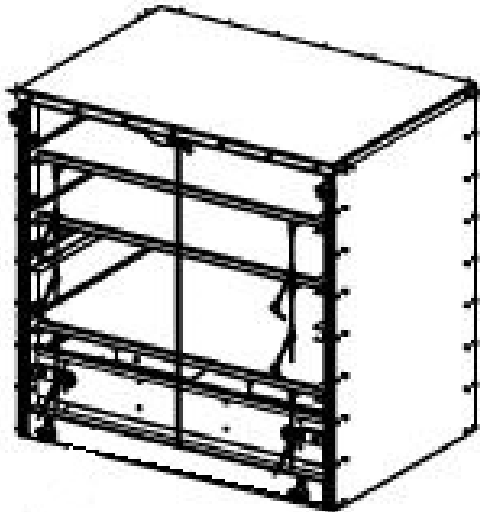
**NOTE**

The optional refrigerator and vault are factory installed and must be requested when ordering the MWC, to provide the installed supporting brackets.

**MWC OPTIONAL CABINETS**



**Cabinet Option 1**



**Cabinet Option 2**

**FIGURE 25 MWC OPTIONAL CABINETS**

(1) ITEM NO.	(2) NSN	(3) CAGEC	(4) PART NUMBER	(5) DESCRIPTION AND USABLE ON CODE (UOC)	(6) QTY
				<b>GROUP 0402 FIGURE 25 Optional Vault and Refrigerator</b>	
1	Not Assigned	1NSG3	16332120	Cabinet Option 1	1
2	Not Assigned	1NSG3	16332130	Cabinet Option 2	1
<b>END OF FIGURE 25</b>					

**END OF WORK PACKAGE**

This page was intentionally left blank



**PARTS SUPPORTING INFORMATION**

**FPU<sup>®</sup> SYSTEMS OPERATION MANUAL  
(INCLUDING REPAIR PARTS & SPECIAL TOOL LIST)  
BOH Modular Workshop Container (MWC)  
BOH FPU Field Pack-up Units**

**NSN INDEX**

<b>NSN</b>	<b>FIG.</b>	<b>ITEM</b>
8145-01-524-4030	1	1
<b>END OF NSN TABLE</b>		

**END OF WORK PACKAGE**

This page was intentionally left blank

**PARTS SUPPORTING INFORMATION**

**FPU® SYSTEMS OPERATION MANUAL  
(INCLUDING REPAIR PARTS & SPECIAL TOOL LIST)  
BOH Modular Workshop Container (MWC)  
BOH FPU Field Pack-up Units**

**PART NUMBER INDEX**

<b>PART NUMBER</b>	<b>FIGURE</b>	<b>ITEM</b>
15100321	5	2
15100324	5	3
15220204	17	4
15220802	17	1
15220819	18	1
15220819	21	1
15220819	23	3
15312430	17	3
15940107	5	5
15980209	20	1
15980223	19	1
15980223	23	2
15980303	23	1
15988331	4	9
15988333	4	6
15988334	4	3
15988335	4	4
15988336	4	7
15988347	3	11
15988348	3	12
15988355	10	1
15988356	8	3
15988356	12	3
15988356	15	5
15988358	10	3
15988359	10	4
15988360	9	4

<b>PART NUMBER</b>	<b>FIGURE</b>	<b>ITEM</b>
15988361	9	5
15988362	9	3
15988364	7	2
15988364	11	2
15988365	13	3
15988366	7	4
15988366	11	5
15988367	7	6
15988367	13	4
15988372	8	6
15988372	12	6
15988376	8	1
15988376	12	1
15988377	8	4
15988377	12	4
15988378	8	7
15988378	12	7
15988379	8	8
15988379	12	8
15988380	11	6
15988395	16	2
15988395	19	2
15988396	16	3
15988396	19	3
15988397	16	5
15988397	19	5
15988398	16	7

PART NUMBER	FIGURE	ITEM
15988398	19	7
15988404	16	1
15988404	20	2
15988450	17	2
15988451	23	NA
15988476	22	1
15988499	10	2
15988503	10	1
15988504	11	3
15988506	15	1
15988507	15	3
15988508	15	2
15988552	9	1
15988553	20	6
15988751	20	5
15988783	14	3
15988784	14	1
15988785	14	2
15988791	11	4
15988791	13	1
15988830	7	5
15988830	11	6
16330156	5	4
16330197	21	3
16332003	8	2
16332003	12	2
16332007	8	5
16332007	12	5
16332023	7	3
16332023	11	8
16332026	13	2
16332032	9	2
16332111	11	7
16332520	7	1
16332520	11	1

PART NUMBER	FIGURE	ITEM
16335037	4	10
16335055	3	2
16335615	15	4
46140142	14	5
70380100	20	4
70380134	20	3
70461244	5	7
70490304	5	6
71241316	18	3
71241316	21	2
72050203	17	5
72050203	18	4
72150204	17	8
72150204	18	7
72150215	17	7
72150215	18	6
72150302	17	9
72150302	18	8
72150401	17	6
72150401	18	5
72250106	18	2
72270101	16	4
72270101	19	4
72270133	16	6
72270133	19	6
72270504	22	2
74100402	10	5
83020101	4	8
91020102	14	4
15002028-001	1	1
15002028-002	1	1
15220819-001	2	3
15220819-002	2	3
15940107-001	3	13
15940107-001	4	11

PART NUMBER	FIGURE	ITEM
15940107-002	3	13
15940107-002	4	11
15988273-001	2	1
15988273-002	2	1
15988274-001	4	2
15988274-002	4	2
15988330-001	4	1
15988330-002	4	1
15988332-001	4	5
15988332-002	4	5
15988337-001	3	3
15988337-002	3	3
15988339-001	3	7
15988339-002	3	7
15988341-001	3	9
15988341-002	3	9
15988343-001	3	8
15988343-002	3	8
15988345-001	3	10
15988345-002	3	10
15988350-001	2	4
15988350-002	2	4
15988383-001	6	2
15988383-002	6	2
16330088-001	3	5
16330088-002	3	5
16330089-001	3	6
16330089-002	3	6
16330142	2	2
Omitted	-	-
16332300-001	6	1
16332300-002	6	1
16335031-001	5	1
16335031-002	5	1
16335035-001	3	4

PART NUMBER	FIGURE	ITEM
16335035-002	3	4
16335051-001	3	1
16335051-002	3	1

**END OF WORK PACKAGE**

This page was intentionally left blank

**Boh Environmental, LLC**

**MANUFACTURER'S LIMITED WARRANTY TERMS**

Boh Environmental, LLC (BOH) warrants that the Products offered, including the Field Pack-Up (FPU®) System, Containerized Mission Systems, Module Kits, and Bare Base Equipment, shall be free from defects in materials and workmanship for a period of twelve (12) months from date of purchase when normally used, maintained and operated by the Customer. Unused Product containing missing or defective components may be returned, within the warranty period, with proof of purchase, to BOH with transportation charges prepaid. BOH, at its option, shall supply a replacement item(s) or refund the purchase price of the Product. BOH shall in its sole discretion determine whether to replace the defective item(s) with identical items, or with items of identical quality and providing identical performance and functional capabilities. BOH will determine, at its sole discretion, whether or not the claim is a valid warranty item. If so, BOH will pay costs (actual transportation plus handling charge) for shipping of the replacement item, when this option is selected.

This warranty is void if Products have been damaged by the Customer as the result of improper or unreasonable use, or other causes not arising out of defects in material or workmanship. The warranty is also void if the Product has at any time been stored or used other than in accordance with the directions set out in the literature relating to the Product (e.g., user/operation manuals). BOH makes no other warranty or representation concerning the Products except that each will meet the performance specifications set forth in the literature relating to the Product. There are no further warranties, including any warranty of merchantability or fitness for a particular purpose covering the Product.

BOH will, at its option, either (1) credit user in the amount paid for any Product which does not perform to these specifications, or (2) replace or repair such Product, provided user so notifies BOH within twelve (12) months of the Products purchase date. BOH shall not be responsible for any consequential damages to user arising as a result of such performance. The Customer will return the item at their cost, if required. Boh may elect to have its representative inspect the item to validate the claim.

Other product components included in the fabrication of items purchased under contract (e.g., air conditioners and generators) that are not manufactured by Boh Environmental are warranted by their individual manufacturer. Copies of such warranties are supplied with the finished Product or are available through BOH.

Please contact BOH for other contract specific warranty terms

This page was intentionally left blank



## THE METRIC SYSTEM AND EQUIVALENTS

### Linear Measure

1 centimeter = 10 millimeters = .39 inch

1 decimeter = 10 centimeters = 3.94 inches

1 meter = 10 decimeters = 39.37 inches

1 decameter = 10 meters = 32.8 feet

1 hectometer = 10 decameters = 328.08 feet

1 kilometer = 10 hectometers = 3,280.8 feet

### Liquid Measure

1 centiliter = 10 milliliters = .34 fl. ounce

1 deciliter = 10 centiliters = 3.38 fl. ounces

1 liter = 10 deciliters = 33.81 fl. ounces

1 deciliter = 10 liters = 2.64 gallons

1 hectoliter = 10 deciliters = 26.42 gallons

1 kiloliter = 10 hectoliters = 264.18 gallons

### Weights

1 centigram = 10 milligrams = .15 grain

1 decigram = 10 centigrams = 1.54 grains

1 gram = 10 decigrams = .035 ounce

1 dekagram = 10 grams = .35 ounce

1 hectogram = 10 dekagrams = 3.52 ounces

1 kilogram = 10 hectograms = 2.2 pounds

1 quintal = 100 kilograms = 220.46 pounds

1 metric ton = 10 quintals = 1.1 short tons

### Square Measure

1 sq. centimeter = 100 sq. millimeters = .155 sq. inch

1 sq. decimeter = 100 sq. centimeters = 15.5 sq. inches

1 sq. meter (centare) = 100 sq. decimeters = 10.76 sq. feet

1 sq. decameter (are) = 100 sq. meters = 1,076.4 sq. feet

1 sq. hectometer (hectare) = 100 sq. decameters = 2.47 acres

1 sq. kilometer = 100 sq. hectometers = .386 sq. mile

### Cubic Measure

1 cu. centimeter = 1000 cu. millimeters = .06 cu. inch

1 cu. decimeter = 1000 cu. centimeters = 61.02 cu. inches

1 cu. meter = 1000 cu. decimeters = 35.31 feet

### Approximate Conversion Factors

To change	To	Multiply by	To change	To	Multiply by
Inches	centimeters	2.540	ounce/inches	Newton/meters	0.007062
feet	meters	0.305	centimeters	inches	0.394
yards	meters	0.914	meters	feet	3.280
miles	kilometers	1.609	meters	yards	1.094
square inches	square centimeters	6.451	kilometers	miles	0.621
square feet	square meters	0.093	square centimeters	square inches	0.155
square yards	square meters	0.836	square meters	square feet	10.764
square miles	square kilometers	2.590	square meters	square yards	1.196
acres	square hectometers	0.405	square kilometers	square miles	0.386
cubic feet	cubic meters	0.028	square hectometers	acres	2.471
cubic yards	cubic meters	0.765	cubic meters	cubic feet	35.315
fluid ounces	milliliters	29.573	cubic meters	cubic yards	1.308
pints	liters	0.473	milliliters	fluid ounces	0.034
quarts	liters	0.946	liters	pints	2.113
gallons	liters	3.785	liters	quarts	1.057
ounces	grams	28.349	liters	gallons	0.264
pounds	kilograms	0.454	grams	ounces	0.035
short tons	metric tons	0.907	kilograms	pounds	2.205
pound/feet	Newton/meters	1.356	metric tons	short tons	1.102
pound/inches	Newton /meters	0.11296			

### Temperature (Exact)

$$\frac{5}{9} (\text{after subtracting } 32) \text{ Celsius temperature } = \frac{1}{9} (\text{Fahrenheit temperature} - 32)$$