

**FPU® SYSTEMS OPERATION MANUAL  
(INCLUDING REPAIR PARTS & SPECIAL TOOL LIST)  
BOH QUADCON MODULES, ADAPTERS and RESTRAINT SYSTEM  
BOH FPU Field Pack-up Units**

**CHAPTER 6**

**PARTS SUPPORTING INFORMATION**

This page was intentionally left blank

---

## PARTS SUPPORTING INFORMATION

### FPU® SYSTEMS OPERATION MANUAL (INCLUDING REPAIR PARTS & SPECIAL TOOL LIST) BOH QUADCON MODULES, ADAPTERS and RESTRAINT SYSTEM BOH FPU Field Pack-up Units

#### INTRODUCTION TO MAINTENANCE ALLOCATION CHART (MAC)

---

##### The BOH Environmental LLC recommended MAC

This introduction provides a general explanation of all maintenance and repair functions authorized at various maintenance levels under the standard Army Maintenance System concept.

The MAC (WP 0020 00, Table 1, immediately following the introduction) designates overall authority and responsibility for the performance of maintenance functions on the BOH QUADCON Modules Adapters and Restraints.

The application of the maintenance functions to the BOH QUADCON Modules Adapters and Restraints shall be consistent with the capacities and capabilities of the designated maintenance levels, which are shown on the MAC in column (4) as:

Unit – includes two sub columns, C (operator/crew) and O (unit) maintenance.

Direct Support – includes an F sub column.

General Support – includes an H sub column.

Depot – includes a D sub column.

The tools and test equipment requirements (WP 0019 00, Special Tools List Table, immediately before the MAC) list the tools and test equipment (both special tools and common tool sets) required for each maintenance function as referenced from the MAC.

##### Maintenance Functions

Maintenance functions are limited to and defined as follows:

1. **Inspect:** To determine the serviceability of an item by comparing its physical and mechanical characteristics with established standards through examination (e.g., by sight, sound, or feel). This includes scheduled inspections.
2. **Test:** To verify serviceability by measuring the mechanical characteristics of an item and comparing those characteristics with prescribed standards on a scheduled basis, i.e., load testing of lift devices and hydrostatic testing of pressure hoses.
3. **Service:** Operations required periodically to keep an item in proper operating condition; e.g., to clean (includes decontaminate, when required), to preserve, to drain, to paint, or to replenish fuel, lubricants, chemical fluids, or gases.
4. **Adjust:** To maintain or regulate, within prescribed limits, by bringing into proper position, or by setting the operating characteristics to specific parameters.
5. **Align:** To adjust specified variable elements of an item to bring about optimum or desired performance.
6. **Calibrate:** To determine and cause corrections to be made or to be adjusted on instruments of test, measuring, and diagnostic equipment used in precision measurement. Consists of comparisons of two instruments, one of which is a certified standard of known accuracy, to detect and adjust any

discrepancy in the accuracy of the instrument being compared.

7. Remove/Install: To remove and install the same item when required to perform service or other maintenance functions. Install may be the act of emplacing, seating, or fixing into position a spare, repair part, or module (component or assembly) in a manner to allow the proper functioning of an equipment or system.
8. Replace: To remove an unserviceable item and install a serviceable counterpart in its place. "Replace" is authorized by the MAC and assigned maintenance level is shown as the third position code of the Source, Maintenance and Recoverability (SMR) code.
9. Repair: The application of maintenance services, including fault location/troubleshooting, removal/installation, disassembly/assembly procedures, and maintenance actions to identify troubles and restore serviceability to an item by correcting specific damage, fault, malfunction, or failure in a part, subassembly, module (component or assembly), end item, or system.

#### **NOTE**

The following definitions are applicable to the "REPAIR" maintenance functions of Service, Inspect, Test, Adjust, Align, Calibrate, and/or Replace:

Fault location/troubleshooting – The process of investigating and detecting the cause of equipment malfunctioning; the act of isolating a fault within a system or Unit Under Test (UUT).

Disassembly/Assembly – The step-by-step breakdown (taking apart) of a spare/functional group coded item to the level of its least component, that is assigned an SMR code for the level of maintenance under consideration (i.e., identified as maintenance significant).

Actions – Welding, grinding, riveting, straightening, facing, machining, and/or resurfacing.

10. Overhaul: That maintenance effort (service/action) prescribed to restore an item to a completely serviceable/operational condition as required by maintenance standards in appropriate technical publications. Overhaul is normally the highest degree of maintenance performed by the Army. Overhaul does not normally return an item to like new condition.
11. Rebuild: Consists of those services/actions necessary for the restoration of unserviceable equipment to a like new condition in accordance with original manufacturing standards. Rebuild is the highest degree of materiel maintenance applied to Army equipment. The rebuild operation includes the act of returning to zero those age measurements (e.g., hours/miles) considered in classifying Army equipment/components.

### Explanation of Columns in the MAC WP 0020 00

Column (1) – Group Number. Column (1) lists Functional Group Code (FGC) numbers, the purpose of which is to identify maintenance significant components, assemblies, subassemblies, and modules with the Next Higher Assembly (NHA).

Column (2) – Component/Assembly. Column (2) contains the item names of components, assemblies, subassemblies, and modules for which maintenance is authorized.

Column (3) – Maintenance Function. Column (3) lists the functions to be performed on the item listed in column (2). (For a detailed explanation of these functions refer to “Maintenance Functions” outlined above).

Column (4) – Maintenance Level. Column (4) specifies each level of maintenance authorized to perform each function listed in column (3), by indicating work time required (expressed as man-hours in whole hours or decimals) in the appropriate sub column. This work time figure represents the active time required to perform that maintenance function at the indicated level of maintenance. If the number or complexity of the tasks within the listed maintenance function varies at different maintenance levels, appropriate work time figures are to be shown for each level. The work time figure represents the average time required to restore an item (assembly, subassembly, component, module, end item, or system) to a serviceable condition under typical field operating conditions. This time includes preparation time (including any necessary disassembly/assembly time), troubleshooting/fault location time, and quality assurance time in addition to the time required to perform the specific tasks identified for the maintenance functions authorized in the MAC. The symbol designations for the various maintenance levels are as follows:

- **C – Operator or crew maintenance**
- **O– Unit maintenance**
- **F – Direct Support maintenance**
- **L – Specialized repair activity (SRA)**
- **H – General support maintenance**
- **D – Depot maintenance**

#### NOTE

The "L" maintenance level is not included in column (4) of the MAC. Functions to this level of maintenance are identified by a work time figure in the "H" column of column (4), and an associated reference code is used in the REMARKS column (6). This code is keyed to the remarks, and the SRA complete repair application is explained there.

Column (5) – Tools and Equipment Reference Code. Column (5) specifies, by code, those common tool sets (not individual tools), common Test, Measurement and Diagnostic Equipment (TMDE), and special tools, special TMDE and special support equipment required to perform the designated function. Codes are keyed to the entries in the tools and test equipment table

Column (6) – Remarks Code. When applicable, this column contains a letter code, in alphabetical order, which is keyed to the remarks table entries. See MAC Table page 0020 00-1 and 00-2.

### Explanation of Columns in the Special Tools List

Column (1) – Tool or Test Equipment Reference Code. The tool or test equipment reference code correlates with a code used in column (5) of the MAC.

Column (2) – Maintenance Level. The lowest level of maintenance authorized to use the tool or test equipment.

Column (3) – Nomenclature. Name or identification of the tool or test equipment.

Column (4) – National Stock Number (NSN). The NSN of the tool or test equipment.

Column (5) – Tool Number. The manufacturer's part number, model number, or type number.

### Explanation of Columns in the Remarks

Column (1) – Remarks Code. The code recorded in column (6) of the MAC.

Column (2) – Remarks. This column lists information pertinent to the maintenance function being performed as indicated in the MAC.

### Special Tools List

(1) Tools or Test Equipment Code	(2) Maintenance Level	(3) Nomenclature	(4) NSN	(5) Tool Number
N/A	C	ADJUSTMENT WRENCH GREEN	N/A	1NSG3 15988092- 001
N/A	C	ADJUSTMENT WRENCH TAN	N/A	1NSG3 15988092- 002
N/A	C	GAUGE BAR GREEN 1NSG3	N/A	1NSG3 15988099- 002
N/A	C	GAUGE BAR TAN	N/A	1NSG3 15988099- 002

**END OF WORK PACKAGE**

**PARTS SUPPORTING INFORMATION**

**FPU® SYSTEMS OPERATION MANUAL  
BOH QUADCON MODULES, ADAPTERS and RESTRAINT SYSTEM  
BOH FPU Field Pack-up Units  
(INCLUDING REPAIR PARTS & SPECIAL TOOL LIST)**

**MAINTENANCE ALLOCATION CHART (MAC)**

(1) Group Number	(2) Component/Assembly	(3) Maintenance Function	(4) Maintenance Level					(5) Tools and Equipment	(6) Remarks
			Unit		Direct Support	General Support	Depot		
			C	O	F	H	D		
00	QUADCON Module Systems								
01	QUADCON Modules	INSPECT	0.1	0.1					
		SERVICE		0.2					
		REPLACE		1					
		REPAIR			1				
0101	Drawer Assemblies	INSPECT	0.1	0.1					
		SERVICE		0.2					
		ALIGN			0.5				
		REPLACE		1					
0102	Drawer Slides	INSPECT	0.1	0.1					
		SERVICE		0.2					
		ALIGN			0.5				
		REPLACE		1					
0103	Drawer Dividers	INSPECT	0.1	0.1					
		SERVICE		0.2					
		ALIGN			0.2				
		REPLACE		1					

(1)	(2)	(3)	(4)					(5)	(6)
Group Number	Component/Assembly	Maintenance Function	Maintenance Level					Tools and Equipment	Remarks
			Unit		Direct Support	General Support	Depot		
			C	O	F	H	D		
02	QUADCON Floor Adapters Multi Use	INSPECT	0.1	0.1					
		SERVICE		0.2					
		ALIGN			0.5				
		REPLACE		0.1					
0201	QUADCON Floor Adapters A and B	INSPECT	0.1	0.1					
		SERVICE		0.2					
		ALIGN			0.5				
		REPLACE		1					
		REPAIR			1				
03	QUADCON Adapter Restraint System	INSPECT	0.5	0.5			1NSG3 15988099	Gage Bar	
		SERVICE	0.1	0.1			1NSG3 15988092	Adjustment wrench	
		ALIGN		1			1NSG3 15988092	Adjustment wrench	
		REPLACE		1			1NSG3 15988092	Adjustment wrench	
<b>END OF TABLE</b>									

**END OF WORK PACKAGE**



---

## PARTS SUPPORTING INFORMATION

### FPU® SYSTEMS OPERATION MANUAL (INCLUDING REPAIR PARTS & SPECIAL TOOL LIST) BOH QUADCON MODULES, ADAPTERS and RESTRAINT SYSTEM BOH FPU Field Pack-up Units

#### INTRODUCTION TO REPAIR PARTS & SPECIAL TOOL LIST

---

## INTRODUCTION

### SCOPE

This Repair Parts & Special Tools List (PARTS LIST ) lists and authorizes spares and repair parts; special tools; special test, measurement, and diagnostic equipment (TMDE); and other special support equipment required for performance of Operator, Unit, and Direct Support maintenance of the BOH QUADCON MODULES.

It authorizes the requisitioning, issue, and disposition of spares, repair parts, and special tools as indicated by the Source, Maintenance, and Recoverability (SMR) codes.

### GENERAL

In addition to the Introduction work package, this PARTS LIST is divided into the following work packages:

1. **Repair Parts List Work Packages.** Work packages containing lists of spares and repair parts authorized by this PARTS LIST for use in the performance of maintenance. These work packages also include parts which must be removed for replacement of the authorized parts. Parts lists are composed of functional groups in ascending alphanumeric sequence, with the parts in each group listed in ascending figure and item number sequence. Sending units, brackets, filters, and bolts are listed with the component they mount on. Bulk materials are listed by item name in FIG. BULK at the end of the work packages. Repair parts kits are listed separately in their own functional group and work package. Repair parts for reparable special tools are also listed in a separate work package. Items listed are shown on the associated illustrations. See WP 0022 00, WP 0023 00 and WP 0024 00
2. **Cross-Reference Indexes Work Packages.** There are two cross-reference indexes work packages in this PARTS LIST: the National Stock Number (NSN) Index work package and the Part Number (P/N) Index work package. The National Stock Number Index work package refers you to the figure and item number. The Part Number Index work package refers you to the figure and item number. See WP 0025 00 and WP 0026 00

---

**EXPLANATION OF COLUMNS IN THE REPAIR PARTS LIST AND SPECIAL TOOLS LIST WORK PACKAGES**

**ITEM NO.** (Column (1)). Indicates the number used to identify items called out in the illustration.

**NSN** (Column (2)). The NSN for the item is listed in this column.

**CAGEC** (Column (3)). The Commercial and Government Entity Code (CAGEC) is a five-digit code which is used to identify the manufacturer, distributor, or Government agency/activity that supplies the item.

**PART NUMBER** (Column (4)). Indicates the primary number used by the manufacturer (individual, company, firm, corporation, or Government activity), which controls the design and characteristics of the item by means of its engineering drawings, specifications, standards, and inspection requirements to identify an item or range of items.

**Note**

When you use an NSN to requisition an item, the item you receive may have a different P/N from the number listed.

**DESCRIPTION AND USABLE ON CODE (UOC)**

(Column (5)). This column includes the following information:

The ITEM Assembly Progression (**.Item or Assembly..Next Lower Item ...Next Lower Item**)

1. The federal item name, and when required, a minimum description to identify the item.
2. P/Ns of bulk materials are referenced in this column in the line entry to be manufactured or fabricated.
3. Hardness Critical Item (HCI). A support item that provides the equipment with special protection from electromagnetic pulse (EMP) damage during a nuclear attack.
4. The statement END OF FIGURE appears just below the last item description in column (6) for a given figure in both the repair parts list and special tools list work packages.

**QTY** (Column (6)). The QTY (quantity per figure) column indicates the quantity of the item used in the breakout shown on the illustration/figure, which is prepared for a functional group, sub-functional group, or an assembly. An "AR" (as required) appearing in this column instead of a quantity indicates that the quantity is variable and quantity may change from application to application.

## EXPLANATION OF CROSS-REFERENCE INDEXES WORK PACKAGES FORMAT AND COLUMNS.

### 1. National Stock Number (NSN) Index Work Package.

STOCK NUMBER Column. This column lists the NSN in National Item Identification Number (NIIN) sequence. The NIIN consists of the last nine digits of the NSN.

NSN  
(e.g., 5385-01-574-1476)

When using this column to locate an item, ignore the first four digits of the NSN. However, the complete NSN should be used when ordering items by stock number.

FIG. Column. This column lists the number of the figure where the item is identified/located. The figures are in numerical order in the repair parts list and special tools list work packages.

ITEM Column. The item number identifies the item associated with the figure listed in the adjacent FIG. Column. This item is also identified by the NSN listed on the same line.

### 2. Part Number (P/N) Index Work Package. P/Ns in this index are listed in ascending alphanumeric sequence (vertical arrangement of letter and number combinations which places the first letter or digit of each group in order A through Z, followed by the numbers 0 through 9 and each following letter or digit in like order).

PART NUMBER Column. Indicates the P/N assigned to the item.

FIG. Column. This column lists the number of the figure where the item is identified/located in the repair parts list and special tools list work packages.

ITEM Column. The item number is the number assigned to the item as it appears in the figure referenced in the adjacent figure number column.

## SPECIAL INFORMATION

UOC. The UOC appears in the lower left corner of the Description Column heading. Usable On Codes are shown as "UOC: . . ." in the Description Column (justified left) on the first line under the applicable item/nomenclature. None coded items are applicable to all models. Identification of the UOCs used in this PARTS LIST are:

F8A QUADCON Adapter A  
F8B QUADCON Adapter B  
F8C QUADCON MULTI Use Adapter

Index Numbers Column. This index number is a cross-reference between the NSN and P/N index work packages and the materiel list in the repair parts list work package.

**ILLUSTRATIONS LIST** The illustrations in this PARTS LIST contain unit and direct support

**0021 00-3**

authorized items. The tabular list in the repair parts list work package contains only those parts coded "O" and "F" in the third position of the SMR code, therefore, there may be a break in the item number sequence. See MAC Table page 0020 00-1 and 00-2.

### HOW TO LOCATE REPAIR PARTS

#### A. When NSNs or P/Ns Are Not Known.

1. Using the table of contents, determine the assembly group to which the item belongs. This is necessary since figures are prepared for assembly groups and subassembly groups, and lists are divided into the same groups.
2. Find the figure covering the functional group or the sub functional group to which the item belongs.
3. Identify the item on the figure and note the number(s).
4. Look in the repair parts list work packages for the figure and item numbers. The NSNs and part numbers are on the same line as the associated item numbers.

#### B. When NSN Is Known.

1. If you have the NSN, look in the STOCK NUMBER column of the NSN index work package. The NSN is arranged in NIIN sequence. Note the figure and item number next to the NSN.
2. Turn to the figure and locate the item number. Verify that the item is the one you are looking for.

#### C. When the P/N Is Known.

1. If you have the P/N and not the NSN, look in the PART NUMBER column of the P/N index work package. Identify the figure and item number.
2. Look up the item on the figure in the applicable repair parts list work package.

### ABBREVIATIONS

#### Abbreviation

AY  
KT  
FPU  
AR

#### Explanation

ASSEMBLY  
KIT  
FIELD PACK\_UP UNIT  
AS REQUIRED

### END OF WORK PACKAGE

---

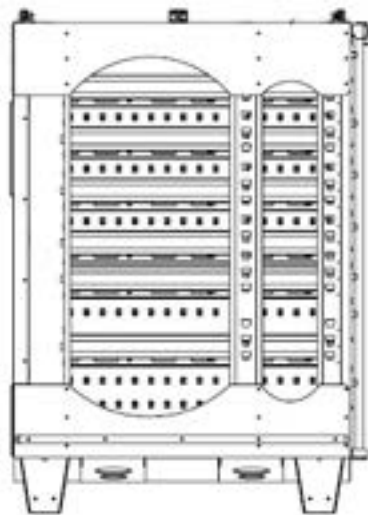
**PARTS SUPPORTING INFORMATION**

**FPU® SYSTEMS OPERATION MANUAL  
(INCLUDING REPAIR PARTS & SPECIAL TOOL LIST)  
BOH QUADCON MODULES, ADAPTERS and RESTRAINT SYSTEM  
BOH FPU Field Pack-up Units**

**QUADCON MODULE REPAIR PARTS LIST**

---

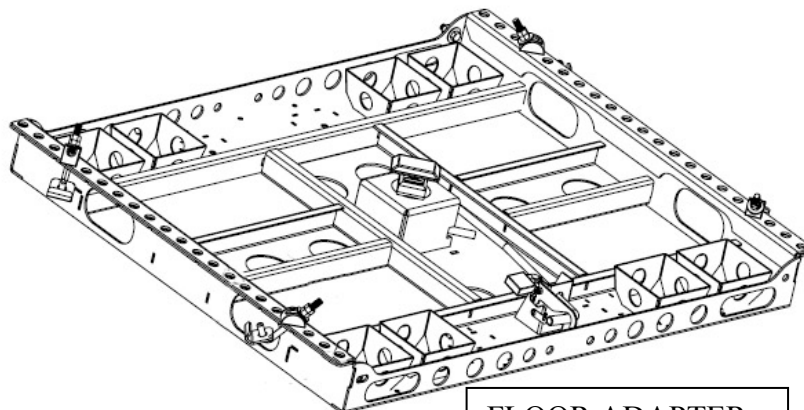
**BOH FPU QUADCON MODULES AND FLOOR ADAPTERS**



SIDE VIEW



FRONT VIEW



FLOOR ADAPTER

BOH FPU QUADCON MODULE KIT CONFIGURATION #1

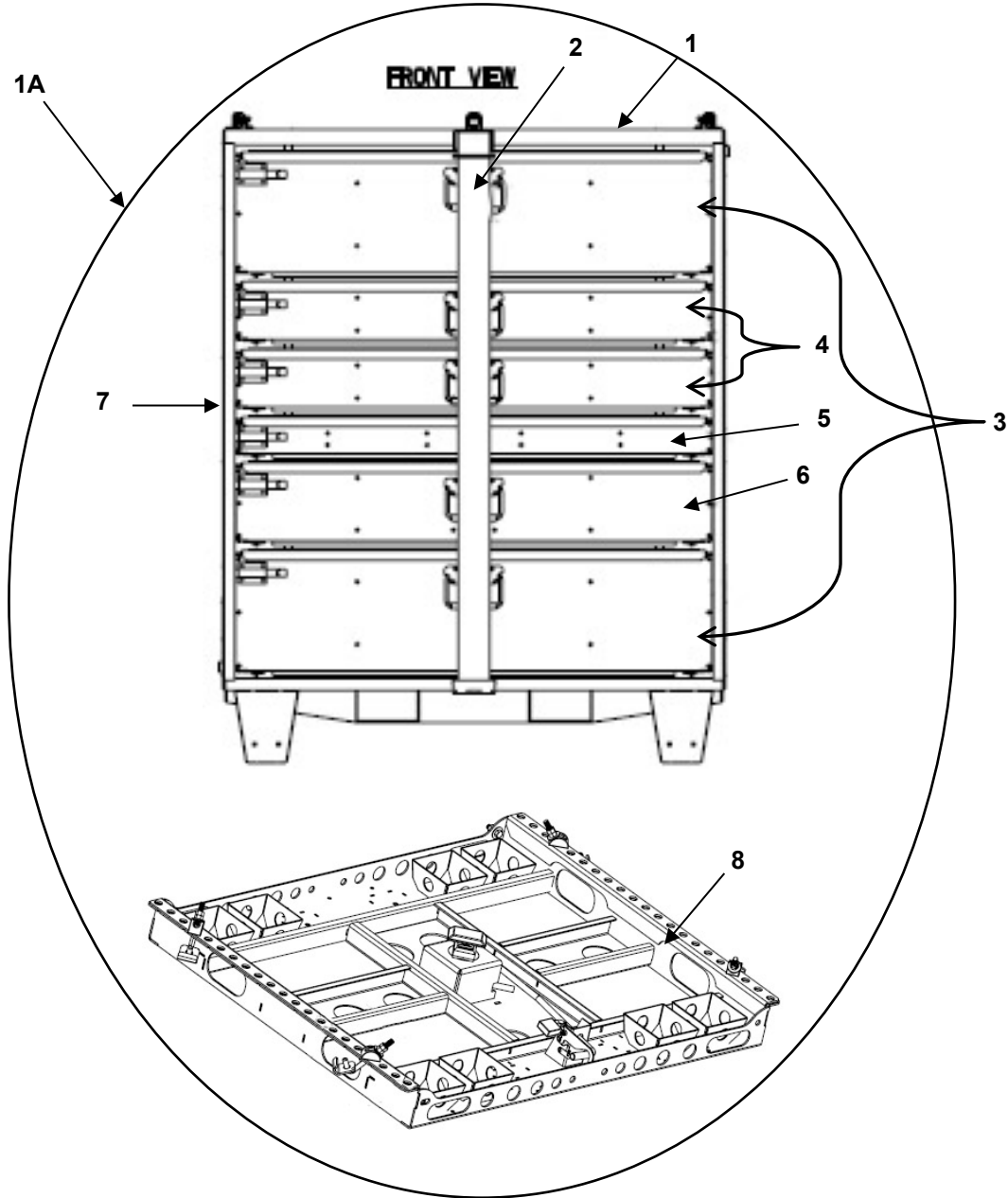


Figure 01 BOH FPU QUADCON MODULE KIT CONFIGURATION #1

ITEM NO.	(2) NSN	(3) CAGEC	(4) PART NUMBER	(5) DESCRIPTION AND USABLE ON CODE (UOC)	(6) QTY
				<b>GROUP 01 FIGURE 01 BOH FPU QUADCON MODULE KIT CONFIGURATION #1</b>	
1A	8145-01-606-2789	1NSG3	30000020G	.BOH FPU QUADCON MODULE KIT CONFIG #1 GREEN	1
1	8145-01-606-2565	1NSG3	15440001- 001	..BOH FPU QUADCON MODULE #1 GREEN	1
2	Not Assigned	1NSG3	16061032- 001	...3G BAR GREEN	1
3	Not Assigned	1NSG3	15440129- 001	...12" DRAWER GREEN	2
4	Not Assigned	1NSG3	15440166- 001	...6" DRAWER GREEN	2
5	Not Assigned	1NSG3	15440159- 001	...4" DRAWER GREEN	1
6	Not Assigned	1NSG3	15440173- 001	...8" DRAWER GREEN	1
7	Not Assigned	1NSG3	15440140- 001	...MODULE HULL GREEN	1
8	8145-01-606-2147	1NSG3	15441100- 001	..QUADCON FLOOR ADAPTER MULTI-USE GREEN	1
1A	8145-01-606-2784	1NSG3	30000020T	.BOH FPU QUADCON MODULE KIT CONFIG #1 TAN	1
1	8145-01-606-3447	1NSG3	15440001- 002	..BOH FPU QUADCON MODULE #1 TAN	1
2	Not Assigned	1NSG3	16061032- 002	...3G BAR TAN	1
3	Not Assigned	1NSG3	15440129- 002	...12" DRAWER TAN	2
4	Not Assigned	1NSG3	15440166- 002	...6" DRAWER TAN	2
5	Not Assigned	1NSG3	15440159- 002	...4" DRAWER TAN	1
6	Not Assigned	1NSG3	15440173- 002	...8" DRAWER TAN	1
7	Not Assigned	1NSG3	15440140- 002	...MODULE HULL TAN	1
8	8145-01-606-2131	1NSG3	15441100- 002	..QUADCON FLOOR ADAPTER MULTI-USE TAN	1
<b>END OF FIGURE 01</b>					

BOH FPU QUADCON MODULE KIT CONFIGURATION #2

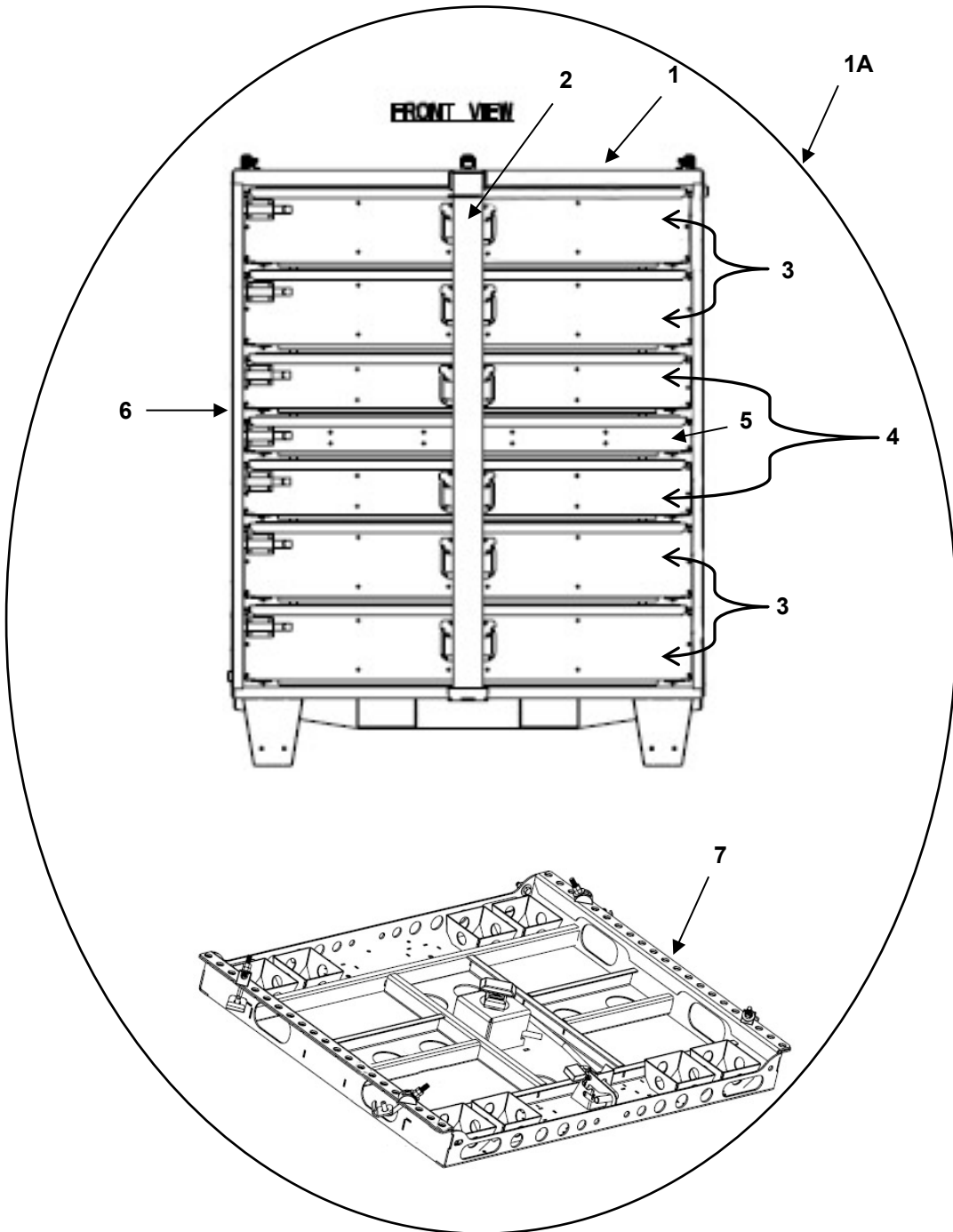


Figure 02 BOH FPU QUADCON MODULE KIT CONFIGURATION #2



(1) ITEM NO.	(2) NSN	(3) CAGEC	(4) PART NUMBER	(5) DESCRIPTION AND USABLE ON CODE (UOC)	(6) QTY
				<b>GROUP 01 FIGURE 02 BOH FPU QUADCON MODULE KIT CONFIGURATION #2</b>	
1A	8145-01-606-2779	1NSG3	30000021G	.BOH FPU QUADCON MODULE KIT CONFIG #2 GREEN	1
1	8145-01-606-2560	1NSG3	15440002- 001	..BOH FPU QUADCON MODULE CONFIG.#2 GREEN	1
2	Not Assigned	1NSG3	16061032- 001	...3G BAR GREEN	1
3	Not Assigned	1NSG3	15440173- 001	...8" DRAWER GREEN	4
4	Not Assigned	1NSG3	15440166- 001	...6" DRAWER GREEN	2
5	Not Assigned	1NSG3	15440159- 001	...4" DRAWER GREEN	1
6	Not Assigned	1NSG3	15440140- 001	...MODULE HULL GREEN	1
7	8145-01-606-2147	1NSG3	15441100- 001	..QUADCON FLOOR ADAPTER MULTI-USE GREEN	1
1A	8145-01-606-2678	1NSG3	30000021T	.BOH FPU QUADCON MODULE KIT CONFIG #2 TAN	1
1	8145-01-606-2824	1NSG3	15440002- 002	..BOH FPU QUADCON MODULE CONFIGURATION #2 TAN	1
2	Not Assigned	1NSG3	16061032- 002	...3G BAR TAN	1
3	Not Assigned	1NSG3	15440173- 002	...8" DRAWER TAN	4
4	Not Assigned	1NSG3	15440166- 002	...6" DRAWER TAN	2
5	Not Assigned	1NSG3	15440159- 002	...4" DRAWER TAN	1
6	Not Assigned	1NSG3	15440140- 002	...MODULE HULL TAN	1
7	8145-01-606-2131	1NSG3	15441100- 002	..QUADCON FLOOR ADAPTER MULTI-USE TAN	1
<b>END OF FIGURE 02</b>					

BOH FPU QUADCON MODULE KIT CONFIGURATION #3

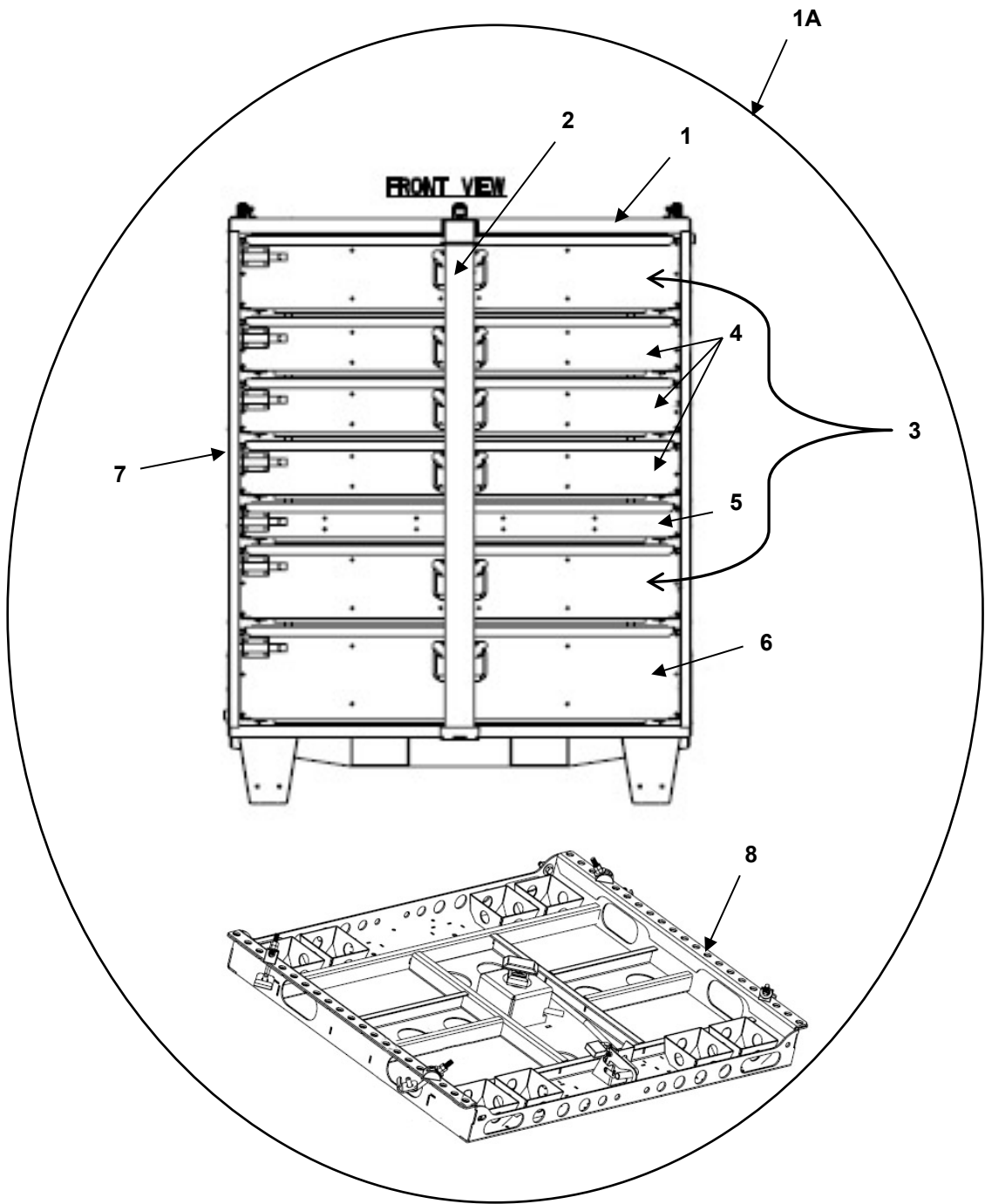


Figure 03 BOH FPU QUADCON MODULE KIT CONFIGURATION #3

(1) ITEM NO.	(2) NSN	(3) CAGEC	(4) PART NUMBER	(5) DESCRIPTION AND USABLE ON CODE (UOC)	(6) QTY
				<b>GROUP 01 FIGURE 03 BOH FPU QUADCON MODULE KIT CONFIGURATION #3</b>	
1A	8145-01-606-2698	1NSG3	30000022G	.BOH FPU QUADCON MODULE KIT CONFIG #3 GREEN	1
1	8145-01-606-2549	1NSG3	15440003-001	..BOH FPU QUADCON MODULE CONFIG.#3 GREEN	1
2	Not Assigned	1NSG3	16061032-001	...3G BAR GREEN	1
3	Not Assigned	1NSG3	15440173-001	...8" DRAWER GREEN	2
4	Not Assigned	1NSG3	15440166-001	...6" DRAWER GREEN	3
5	Not Assigned	1NSG3	15440159-001	...4" DRAWER GREEN	1
6	Not Assigned	1NSG3	15440180-001	...10" DRAWER GREEN	1
7	Not Assigned	1NSG3	15440140-001	...MODULE HULL GREEN	1
8	8145-01-606-2147	1NSG3	15441100-001	..QUADCON FLOOR ADAPTER MULTI-USE GREEN	1
1A	8145-01-606-2830	1NSG3	30000022T	.BOH FPU QUADCON MODULE KIT CONFIG #3 TAN	1
1	8145-01-606-2819	1NSG3	15440003-002	..BOH FPU QUADCON MODULE CONFIGURATION #3 TAN	1
2	Not Assigned	1NSG3	16061032-002	...3G BAR TAN	1
3	Not Assigned	1NSG3	15440173-002	...8" DRAWER TAN	2
4	Not Assigned	1NSG3	15440166-002	...6" DRAWER TAN	3
5	Not Assigned	1NSG3	15440159-002	...4" DRAWER TAN	1
6	Not Assigned	1NSG3	15440180-002	...10" DRAWER TAN	1
7	Not Assigned	1NSG3	15440140-002	...MODULE HULL TAN	1
8	8145-01-606-2131	1NSG3	15441100-002	..QUADCON FLOOR ADAPTER MULTI-USE TAN	1
<b>END OF FIGURE 03</b>					

BOH FPU QUADCON MODULE KIT CONFIGURATION #4

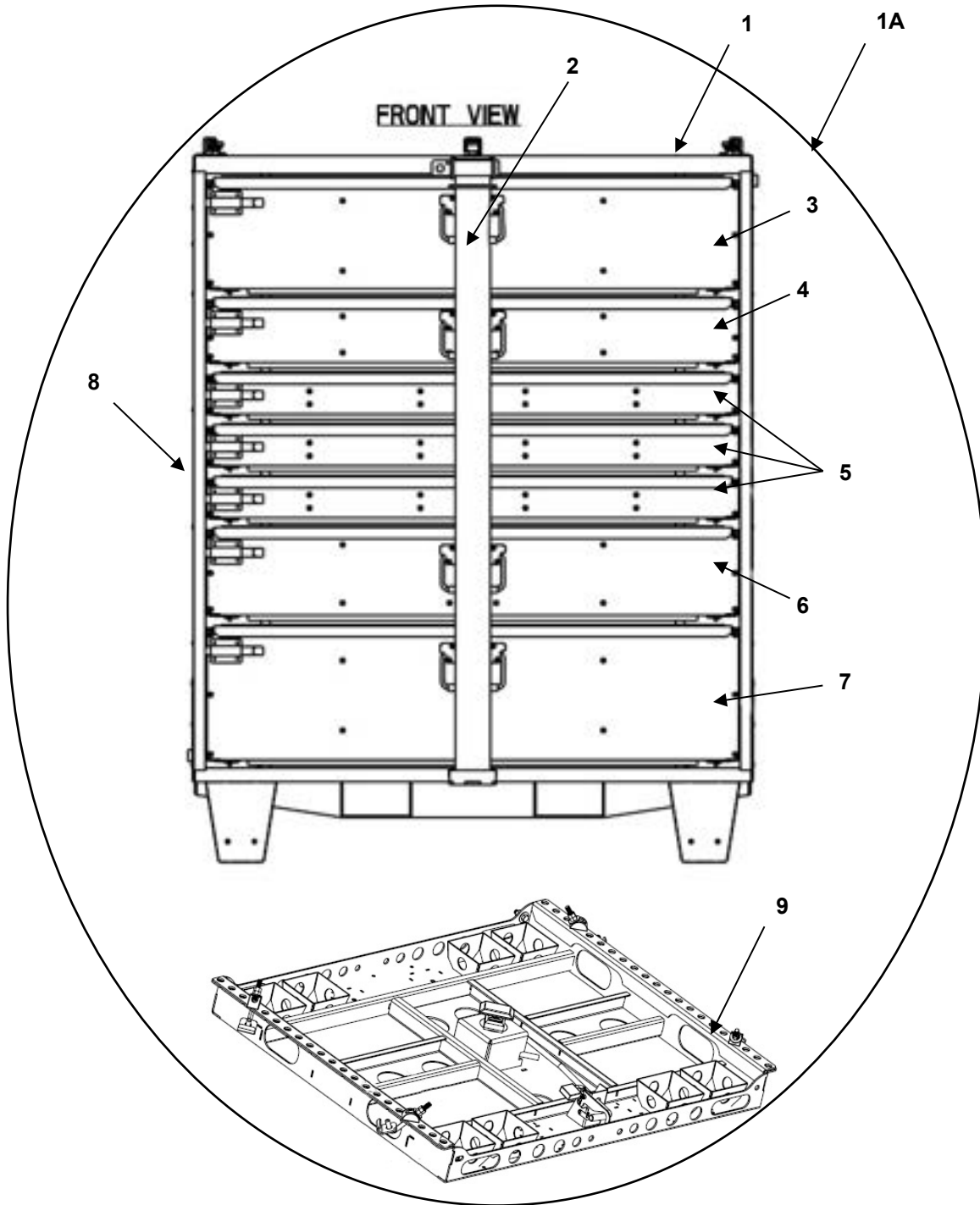


Figure 04 BOH FPU QUADCON MODULE KIT CONFIGURATION #4

(1) ITEM NO.	(2) NSN	(3) CAGEC	(4) PART NUMBER	(5) DESCRIPTION AND USABLE ON CODE (UOC)	(6) QTY
				<b>GROUP 01 FIGURE 04 BOH FPU QUADCON MODULE KIT CONFIGURATION #4</b>	
1A	8145-01-606-2524	1NSG3	30000023G	.BOH FPU QUADCON MODULE KIT CONFIG #4 GREEN	1
1	8145-01-606-2800	1NSG3	15440004-001	..BOH FPU QUADCON MODULE CONFIG.#4 GREEN	1
2	Not Assigned	1NSG3	16061032-001	...3G BAR GREEN	1
3	Not Assigned	1NSG3	15440180-001	...10" DRAWER GREEN	1
4	Not Assigned	1NSG3	15440166-001	...6" DRAWER GREEN	1
5	Not Assigned	1NSG3	15440159-001	...4" DRAWER GREEN	3
6	Not Assigned	1NSG3	15440173-001	...8" DRAWER GREEN	1
7	Not Assigned	1NSG3	15440129-001	...12" DRAWER GREEN	1
8	Not Assigned	1NSG3	15440140-001	...MODULE HULL GREEN	1
9	8145-01-606-2147	1NSG3	15441100-001	..QUADCON FLOOR ADAPTER MULTI-USE GREEN	1
1A	8145-01-606-2573	1NSG3	30000023T	.BOH FPU QUADCON MODULE KIT CONFIG #4 TAN	1
1	8145-01-606-2540	1NSG3	15440004-002	..BOH FPU QUADCON MODULE CONFIGURATION #4 TAN	1
2	Not Assigned	1NSG3	16061032-002	...3G BAR TAN	1
3	Not Assigned	1NSG3	15440180-002	...10" DRAWER TAN	1
4	Not Assigned	1NSG3	15440166-002	...6" DRAWER TAN	1
5	Not Assigned	1NSG3	15440159-002	...4" DRAWER TAN	3
6	Not Assigned	1NSG3	15440173-002	...8" DRAWER TAN	1
7	Not Assigned	1NSG3	15440129-002	...12" DRAWER TAN	1
8	Not Assigned	1NSG3	15440140-002	...MODULE HULL TAN	1
9	8145-01-606-2131	1NSG3	15441100-002	..QUADCON FLOOR ADAPTER MULTI-USE TAN	1
<b>END OF FIGURE 04</b>					

BOH FPU QUADCON MODULE KIT CONFIGURATION #5

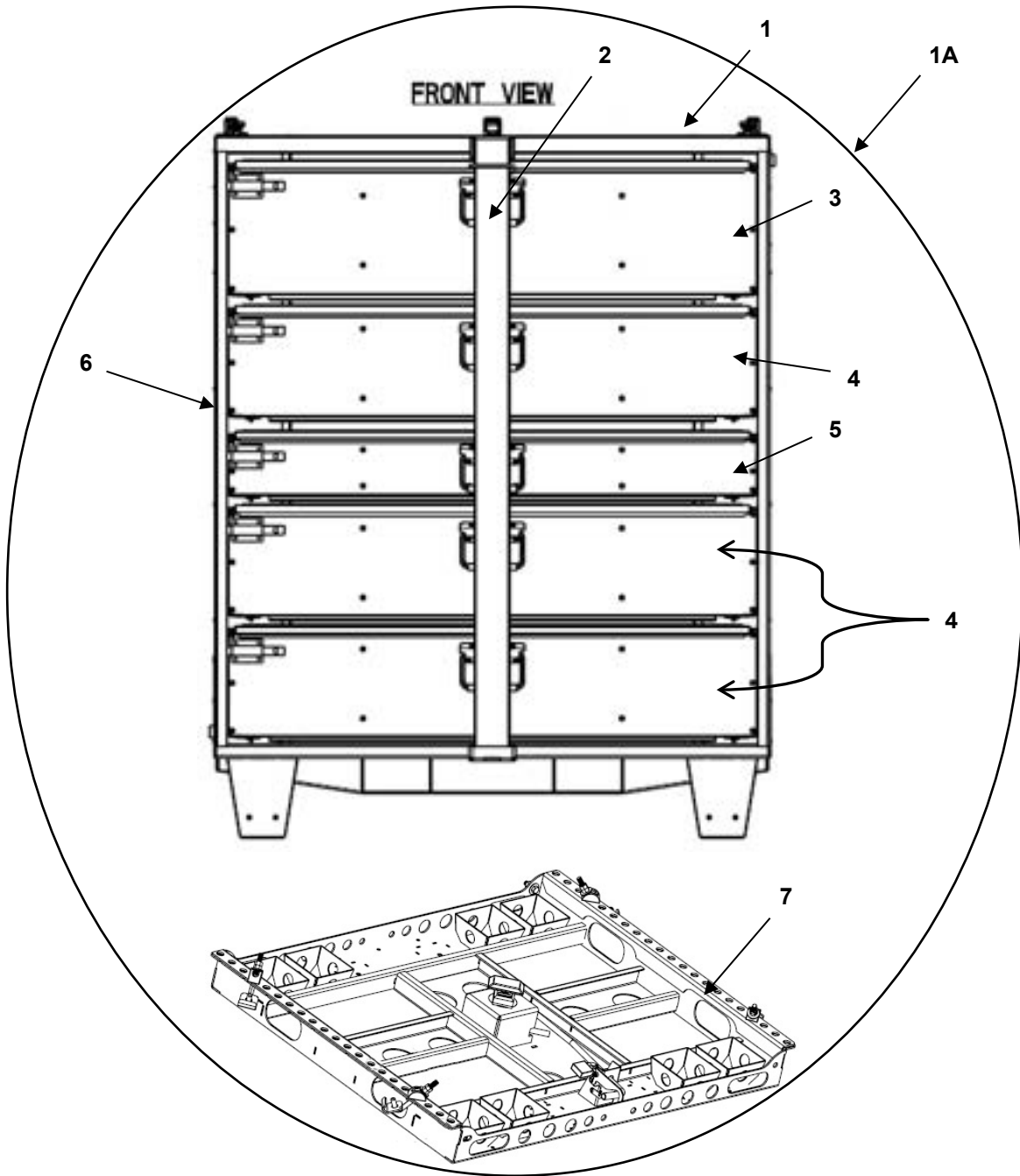
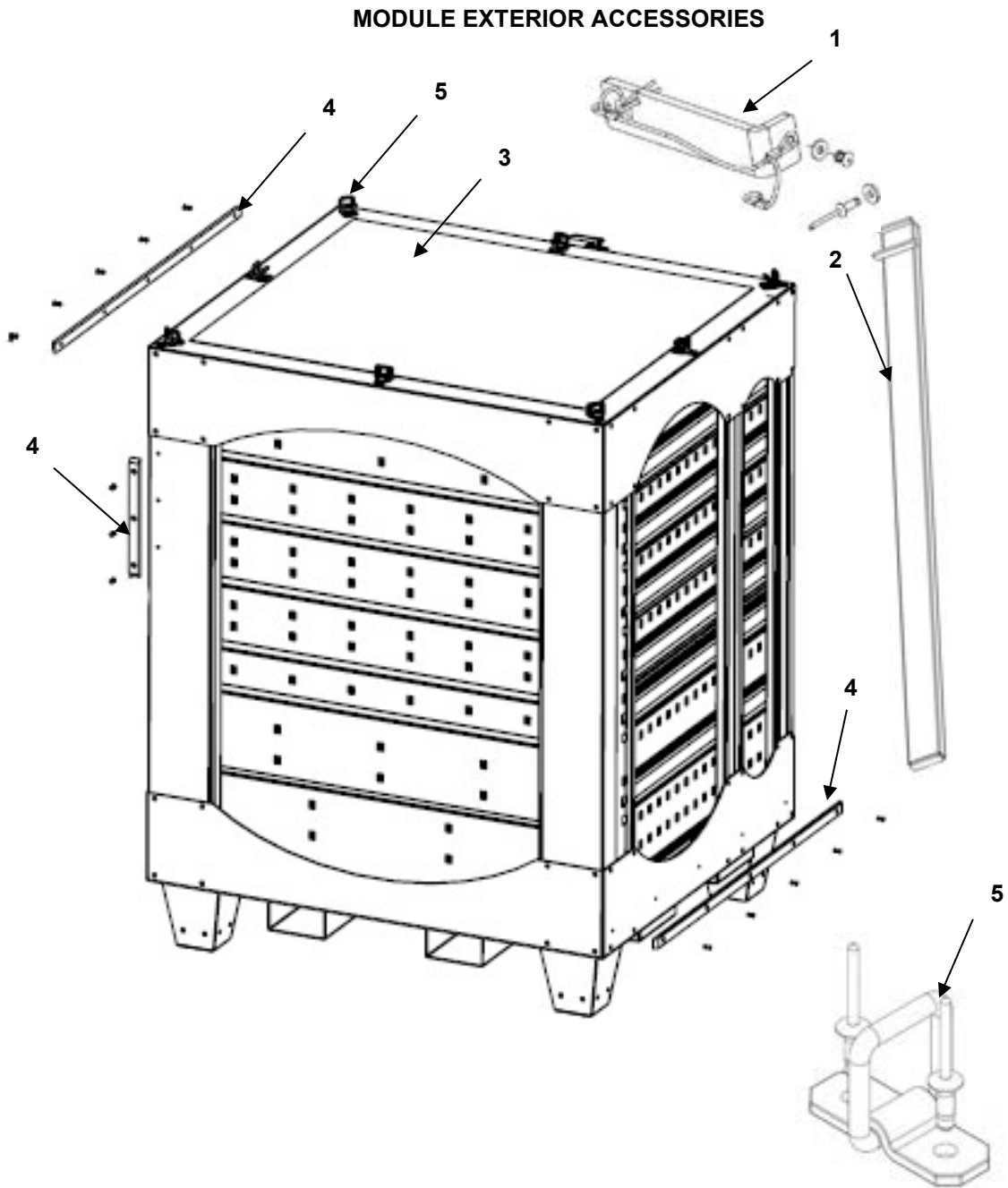


Figure 05 BOH FPU QUADCON MODULE KIT CONFIGURATION #5

(1) ITEM NO.	(2) NSN	(3) CAGEC	(4) PART NUMBER	(5) DESCRIPTION AND USABLE ON CODE (UOC)	(6) QTY
				<b>GROUP 01 FIGURE 05 BOH FPU QUADCON MODULE KIT CONFIGURATION #5</b>	
1A	8145-01-606-2833	1NSG3	30000024G	.BOH FPU QUADCON MODULE KIT CONFIG #5 GREEN	1
1	8145-01-606-2792	1NSG3	15440005-001	..BOH FPU QUADCON MODULE CONFIG.#5 GREEN	1
2	Not Assigned	1NSG3	16061032-001	...3G BAR GREEN	1
3	Not Assigned	1NSG3	15440129-001	...12" DRAWER GREEN	1
4	Not Assigned	1NSG3	15440180-001	...10" DRAWER GREEN	3
5	Not Assigned	1NSG3	15440166-001	...6" DRAWER GREEN	1
6	Not Assigned	1NSG3	15440140-001	...MODULE HULL GREEN	1
7	8145-01-606-2147	1NSG3	15441100-001	..QUADCON FLOOR ADAPTER MULTI-USE GREEN	1
1A	8145-01-606-2533	1NSG3	30000024T	.BOH FPU QUADCON MODULE KIT CONFIG #5 TAN	1
1	8145-01-606-2796	1NSG3	15440005-002	..BOH FPU QUADCON MODULE CONFIGURATION #5 TAN	1
2	Not Assigned	1NSG3	16061032-002	...3G BAR TAN	1
3	Not Assigned	1NSG3	15440129-002	...12" DRAWER TAN	1
4	Not Assigned	1NSG3	15440180-002	...10" DRAWER TAN	3
5	Not Assigned	1NSG3	15440166-002	...6" DRAWER TAN	1
6	Not Assigned	1NSG3	15440140-002	...MODULE HULL TAN	1
7	8145-01-606-2131	1NSG3	15441100-002	..QUADCON FLOOR ADAPTER MULTI-USE TAN	1
<b>END OF FIGURE 05</b>					

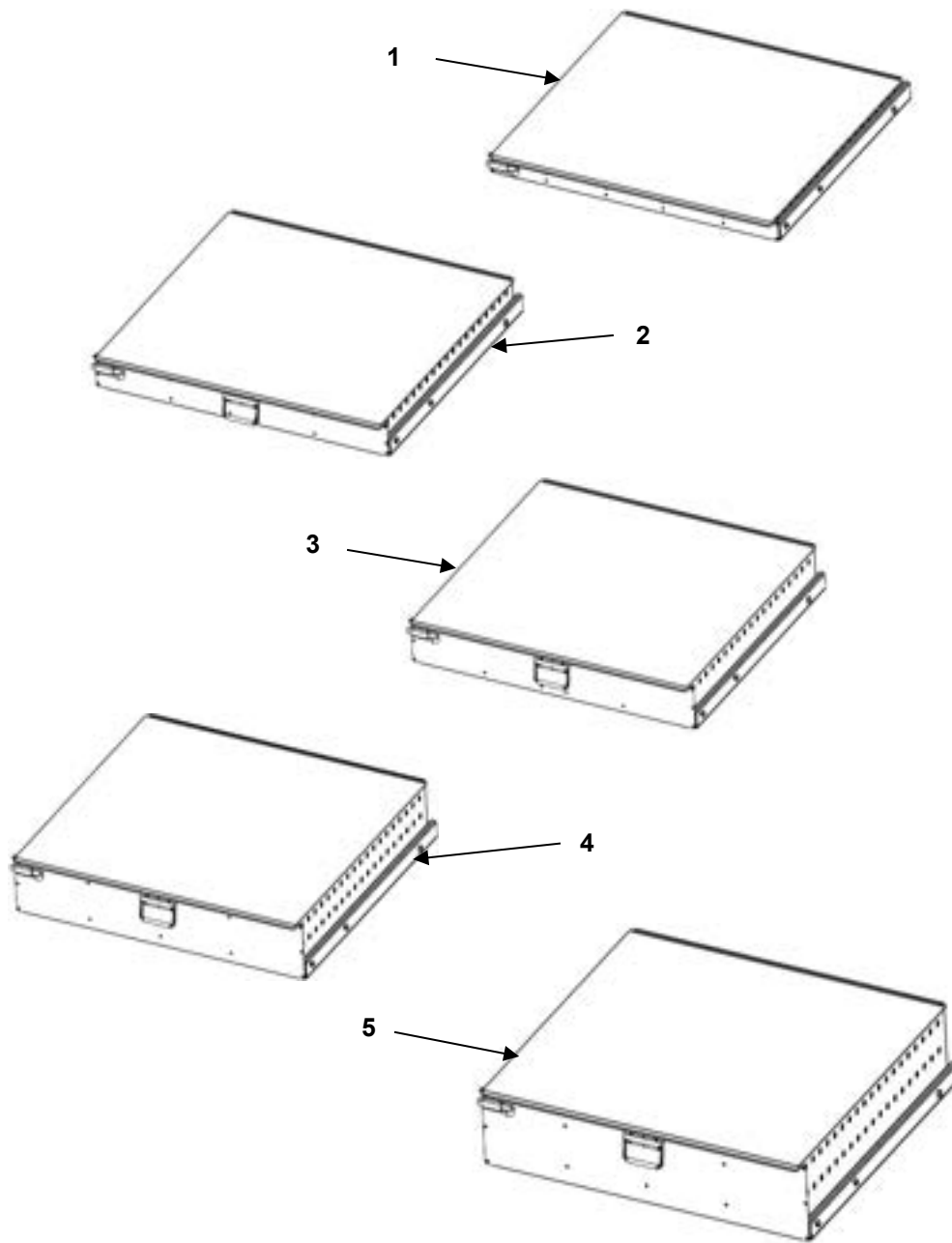


**FIGURE 06 MODULE ACCESSORIES**



(1) ITEM NO.	(2) NSN	(3) CAGEC	(4) PART NUMBER	(5) DESCRIPTION AND USABLE ON CODE (UOC)	(6) QTY
				<b>GROUP 01 FIGURE 06 MODULE ACCESSORIES</b>	
1	Not Assigned	1NSG3	15988248-001	.SECURITY BAR LOCK DEVICE GREEN	1
2	Not Assigned	1NSG3	15988953-001	.SECURITY BAR GREEN	1
1	Not Assigned	1NSG3	15988248-002	.SECURITY BAR LOCK DEVICE TAN	1
2	Not Assigned	1NSG3	15988953-002	.SECURITY BAR TAN	
3	Not Assigned	1NSG3	16061037	.MODULE MAT	1
4	Not Assigned	1NSG3	15988249	.MODULE BUMPER STRIP KIT	1
5	Not Assigned	1NSG3	15940112	.D-RING KIT	1
<b>END OF FIGURE 06</b>					

**MODULE DRAWER ASSEMBLIES**



**FIGURE 07 MODULE DRAWER ASSEMBLIES**

(1) ITEM NO.	(2) NSN	(3) CAGEC	(4) PART NUMBER	(5) DESCRIPTION AND USABLE ON CODE (UOC)	(6) QTY
				<b>GROUP 0101 FIGURE 07 MODULE DRAWER ASSEMBLIES</b>	
1	Not Assigned	1NSG3	15988953-001	.4" DAWER COMPLETE W/ SLIDES GREEN	1
2	Not Assigned	1NSG3	15988954-001	.6" DAWER COMPLETE W/ SLIDES GREEN	1
3	Not Assigned	1NSG3	15988955-001	.8" DAWER COMPLETE W/ SLIDES GREEN	1
4	Not Assigned	1NSG3	15988956-001	.10" DAWER COMPLETE W/ SLIDES GREEN	1
5	Not Assigned	1NSG3	15988957-001	.12" DAWER COMPLETE W/ SLIDES GREEN	1
1	Not Assigned	1NSG3	15988953-002	.4" DAWER COMPLETE W/ SLIDES TAN	1
2	Not Assigned	1NSG3	15988954-002	.6" DAWER COMPLETE W/ SLIDES TAN	1
3	Not Assigned	1NSG3	15988955-002	.8" DAWER COMPLETE W/ SLIDES TAN	1
4	Not Assigned	1NSG3	15988956-002	.10" DAWER COMPLETE W/ SLIDES TAN	1
5	Not Assigned	1NSG3	15988957-002	.12" DAWER COMPLETE W/ SLIDES TAN	1
<b>END OF FIGURE 07</b>					

UNIVERSAL DRAWER PARTS

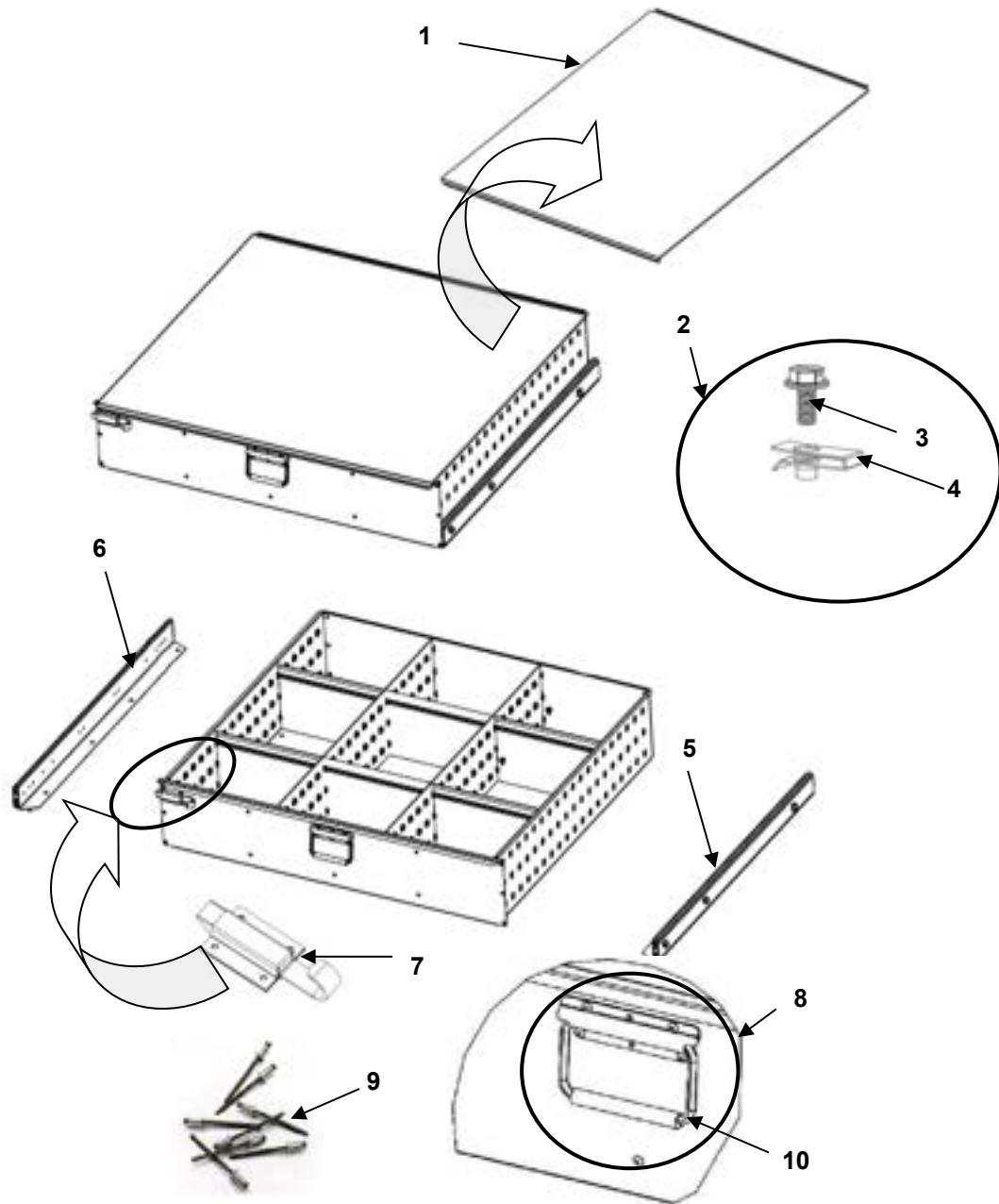


FIGURE 08 UNIVERSAL DRAWER PARTS

(1) ITEM NO.	(2) NSN	(3) CAGEC	(4) PART NUMBER	(5) DESCRIPTION AND USABLE ON CODE (UOC)	(6) QTY
				<b>GROUP 0102 FIGURE 08 UNIVERSAL DRAWER PARTS</b>	
1	Not Assigned	1NSG3	15440106	.DRAWER LID	1
2	Not Assigned	1NSG3	15988612	.DRAWER MOUNTING KIT	1
3	Not Assigned	1NSG3	15121065	..BOLT 1/4" -20 x 1/2 " WASHER HEAD SPINLOCK	8
4	Not Assigned	1NSG3	15121055	..AUVECO CLIP 1/4" - 20	8
5	Not Assigned	1NSG3	15981901	.SLIDE DRAWER RIGHT	1
6	Not Assigned	1NSG3	15981900	.SLIDE DRAWER LEFT	1
7	Not Assigned	1NSG3	74100502	.SLAM LATCH KIT	1
9	Not Assigned	1NSG3	15640406	..RIVET 3/16" x 3/8 GRIP STEEL, BLACK	4
8	Not Assigned	1NSG3	15988613	.DRAWER HANDLE KIT	1
10	Not Assigned	1NSG3	74090520	..DRAWER HANDLE, BLACK	1
9	Not Assigned	1NSG3	15640406	..RIVET 3/16" x 3/8 GRIP STEEL, BLACK	4
<b>END OF FIGURE 08</b>					

DRAWER DIVIDER SETS 4" and 6"

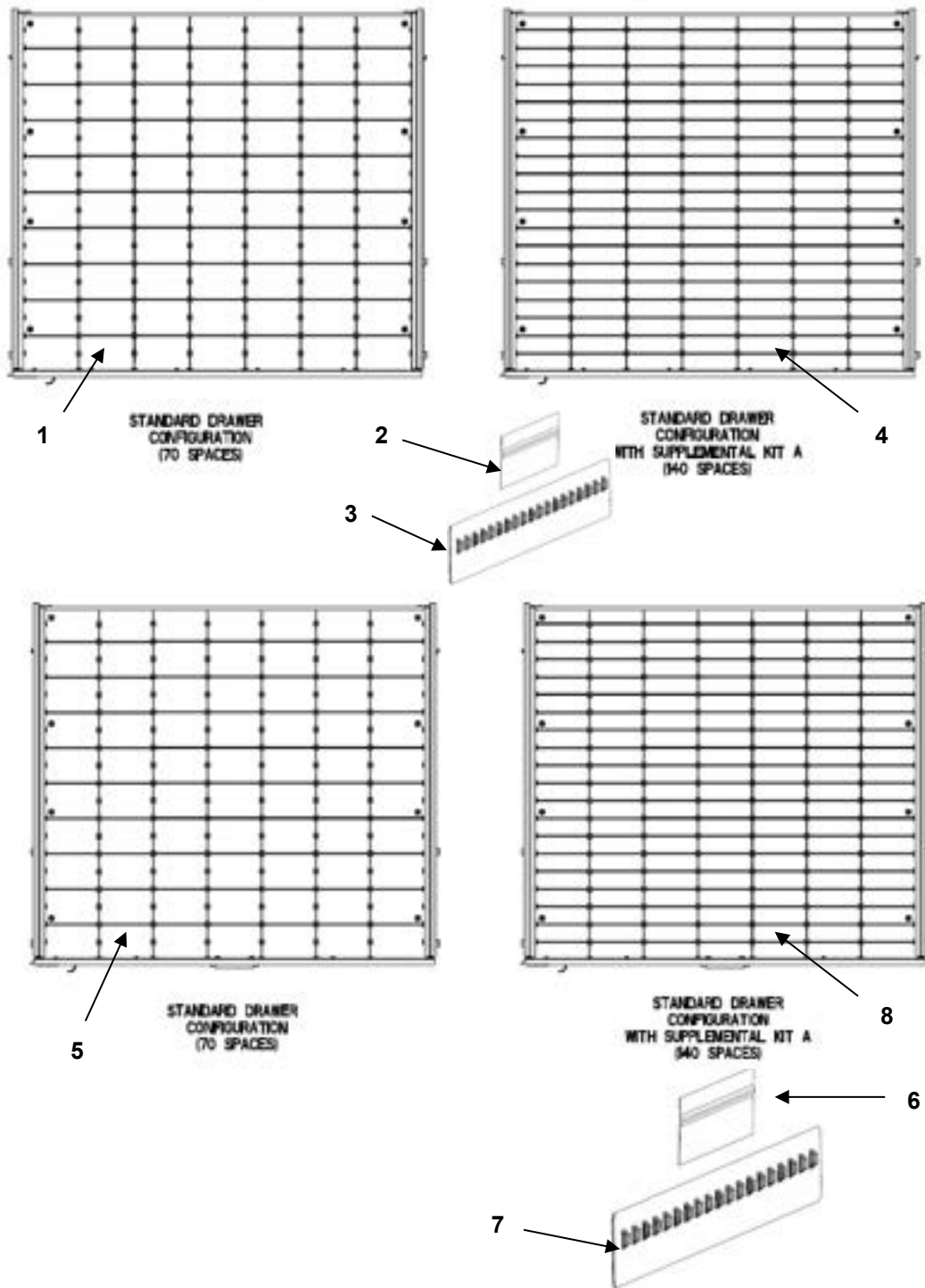


Figure 09 DRAWER DIVIDER SETS 4" and 6"

(1) ITEM NO.	(2) NSN	(3) CAGEC	(4) PART NUMBER	(5) DESCRIPTION AND USABLE ON CODE (UOC)	(6) QTY
				<b>GROUP 0103 FIGURE 09 DRAWER DIVIDER SETS 4" and 6"</b>	
1	Not Assigned	1NSG3	15988939	.DIVIDER SET STD 4"	1
2	Not Assigned	1NSG3	15440165	..DIVIDER STD 4"	63
3	Not Assigned	1NSG3	15440164	..SPINE DIVIDER 4"	6
4	Not Assigned	1NSG3	15988960	.DIVIDER KIT SUPPLEMENT A 4"	1
2	Not Assigned	1NSG3	15440165	..DIVIDER INSERT 4"	70
5	Not Assigned	1NSG3	15988940	.DIVIDER SET STD 6"	1
6	Not Assigned	1NSG3	15440172	..DIVIDER STD 6"	63
7	Not Assigned	1NSG3	15440171	..SPINE DIVIDER 6"	6
8	Not Assigned	1NSG3	15988961	.DIVIDER KIT SUPPLEMENT A 6"	1
6	Not Assigned	1NSG3	15440172	..DIVIDER INSERT 6"	70
<b>END OF FIGURE 09</b>					

DRAWER DIVIDER SETS 8" and 10"

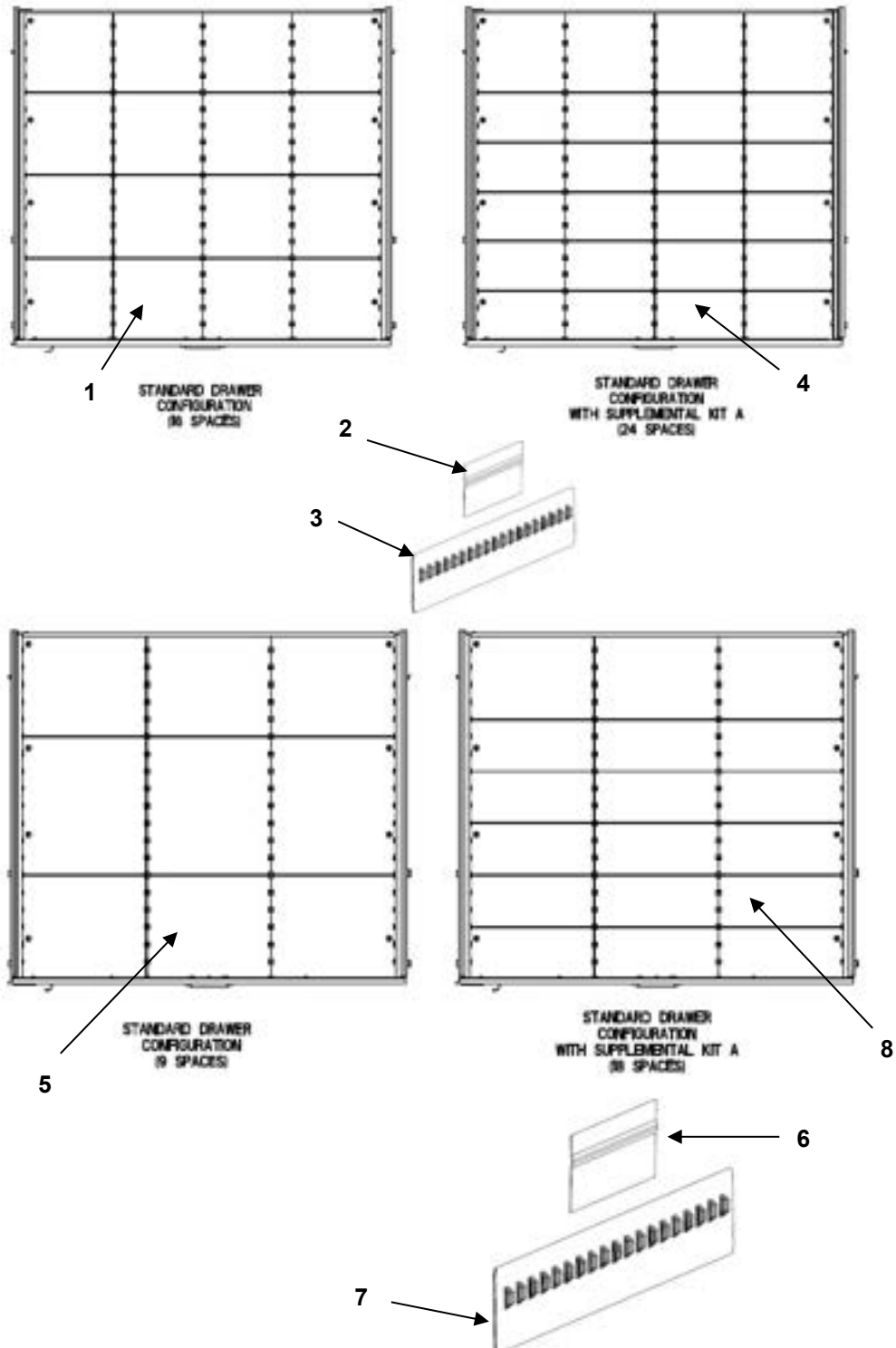


Figure 10 DRAWER DIVIDER SETS 8" and 10"



(1) ITEM NO.	(2) NSN	(3) CAGEC	(4) PART NUMBER	(5) DESCRIPTION AND USABLE ON CODE (UOC)	(6) QTY
				<b>GROUP 0103 FIGURE 10 DRAWER DIVIDER SETS 8" and 10"</b>	
1	Not Assigned	1NSG3	15988941	.DIVIDER SET STD 8"	1
2	Not Assigned	1NSG3	15440179	..DIVIDER STD 8"	12
3	Not Assigned	1NSG3	15440178	..SPINE DIVIDER 8"	3
4	Not Assigned	1NSG3	15988962	.DIVIDER KIT SUPPLEMENT A 8"	1
2	Not Assigned	1NSG3	15440179	..DIVIDER INSERT 8"	8
5	Not Assigned	1NSG3	15988942	.DIVIDER SET STD 10"	1
6	Not Assigned	1NSG3	15440186	..DIVIDER STD 10"	6
7	Not Assigned	1NSG3	15440185	..SPINE DIVIDER 10"	2
8	Not Assigned	1NSG3	15988963	.DIVIDER KIT SUPPLEMENT A 10"	1
6	Not Assigned	1NSG3	15440186	..DIVIDER INSERT 10"	9
<b>END OF FIGURE 10</b>					

DRAWER DIVIDER SETS 12"

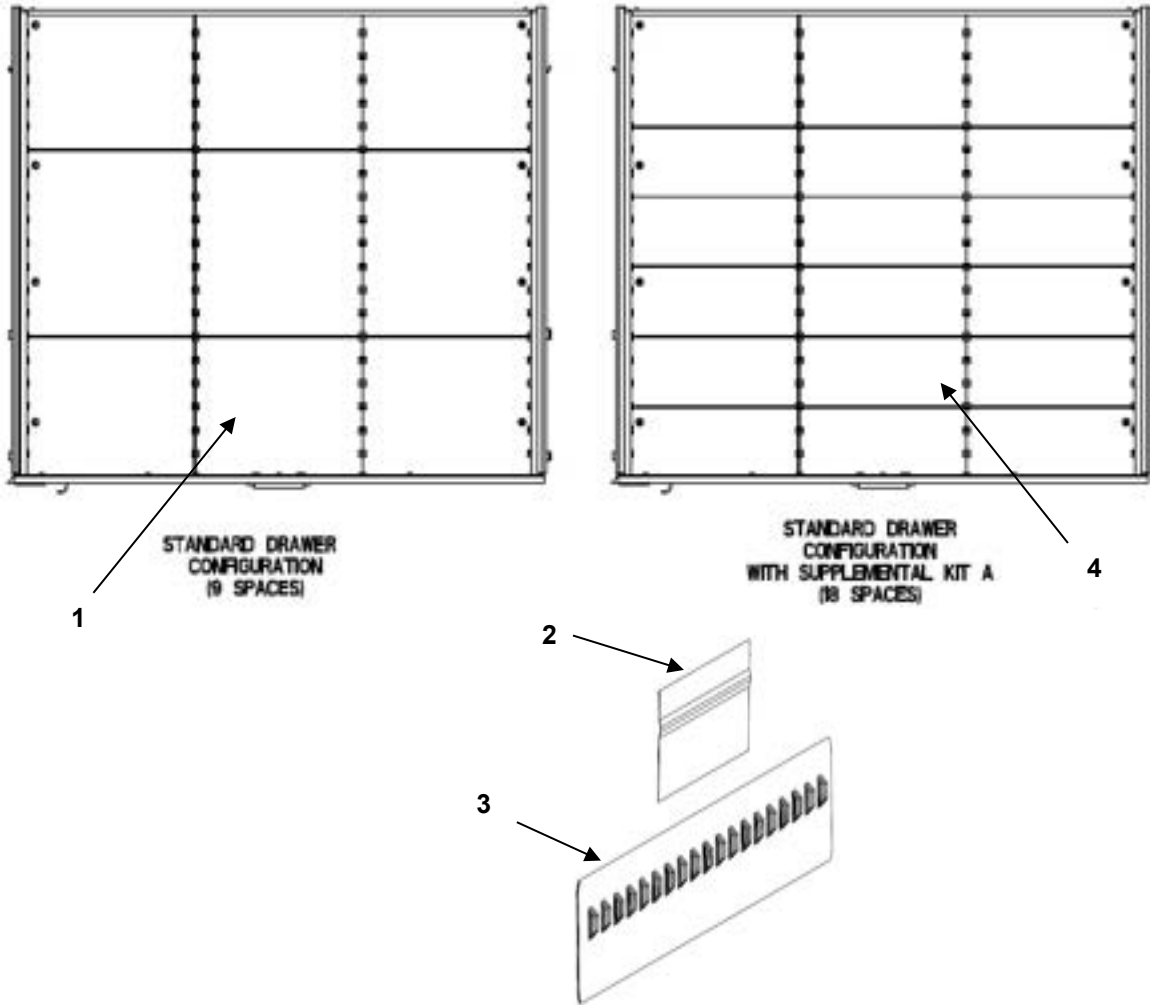


Figure 11 DRAWER DIVIDER SETS 12"

(1) ITEM NO.	(2) NSN	(3) CAGEC	(4) PART NUMBER	(5) DESCRIPTION AND USABLE ON CODE (UOC)	(6) QTY
				<b>GROUP 0103 FIGURE 11 DRAWER DIVIDER SETS 12"</b>	
1	Not Assigned	1NSG3	15988943	.DIVIDER SET STD 12"	1
2	Not Assigned	1NSG3	15440136	..DIVIDER STD 12"	6
3	Not Assigned	1NSG3	15400135	..SPINE DIVIDER 12"	2
4	Not Assigned	1NSG3	15988964	.DIVIDER KIT SUPPLEMENT A 12"	1
2	Not Assigned	1NSG3	15440136	..DIVIDER INSERT 12"	9
<b>END OF FIGURE 11</b>					

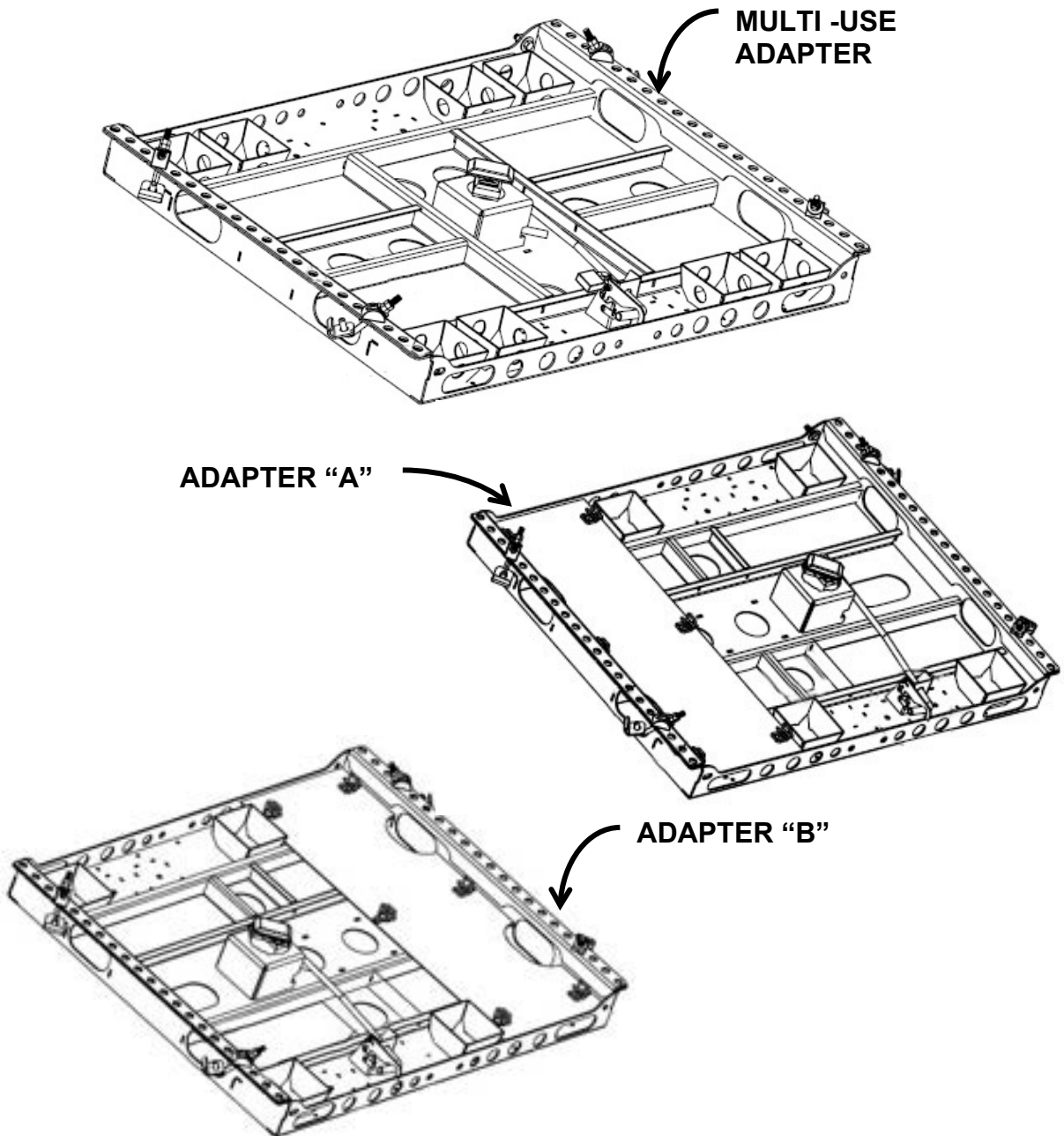
**END OF WORK PACKAGE**

This page was intentionally left blank

**PARTS SUPPORTING INFORMATION**

**FPU® SYSTEMS OPERATION MANUAL  
(INCLUDING REPAIR PARTS & SPECIAL TOOL LIST)  
BOH QUADCON MODULES, ADAPTERS and RESTRAINT SYSTEM  
BOH FPU Field Pack-up Units**

**QUADCON ADAPTERS REPAIR PARTS LIST**



QUADCON FLOOR ADAPTERS

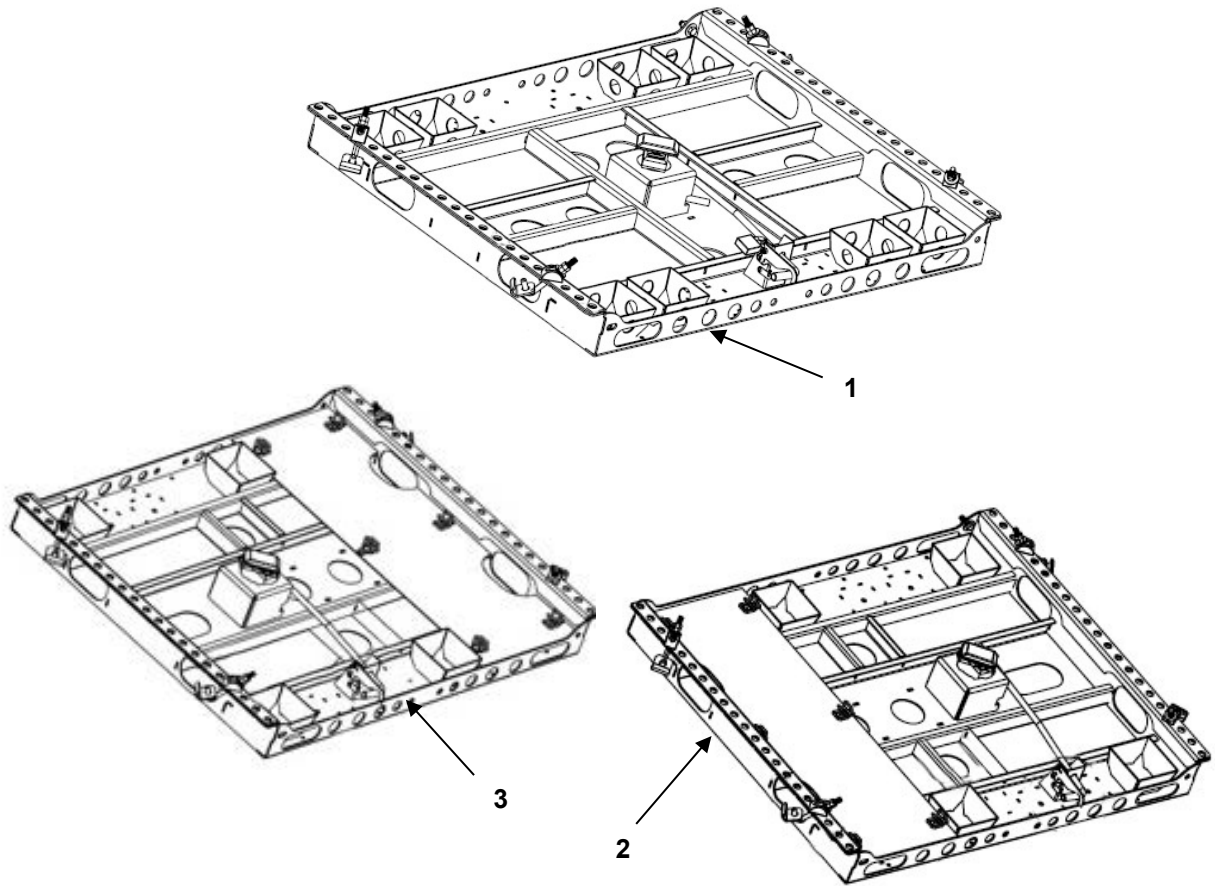


Figure 12 QUADCON FLOOR ADAPTERS

(1) ITEM NO.	(2) NSN	(3) CAGEC	(4) PART NUMBER	(5) DESCRIPTION AND USABLE ON CODE (UOC)	(6) QTY
				<b>GROUP 02 FIGURE 12 QUADCON FLOOR ADAPTERS</b>	
1	8145-01-606-2147	1NSG3	15441100-001	.QUADCON FLOOR ADAPTER MULTI USE GREEN	1
2	Not Assigned	1NSG3	15441120-001	.QUADCON FLOOR ADAPTER A GREEN	1
3	Not Assigned	1NSG3	15441130-001	.QUADCON FLOOR ADAPTER B GREEN	1
1	8145-01-606-2131	1NSG3	15441100-002	.QUADCON FLOOR ADAPTER MULTI USE TAN	1
2	Not Assigned	1NSG3	15441120-002	.QUADCON FLOOR ADAPTER A TAN	1
3	Not Assigned	1NSG3	15441130-002	.QUADCON FLOOR ADAPTER B TAN	1
<b>END OF FIGURE 12</b>					

QUADCON ADAPTER LOCK HANDLE AND HARDWARE

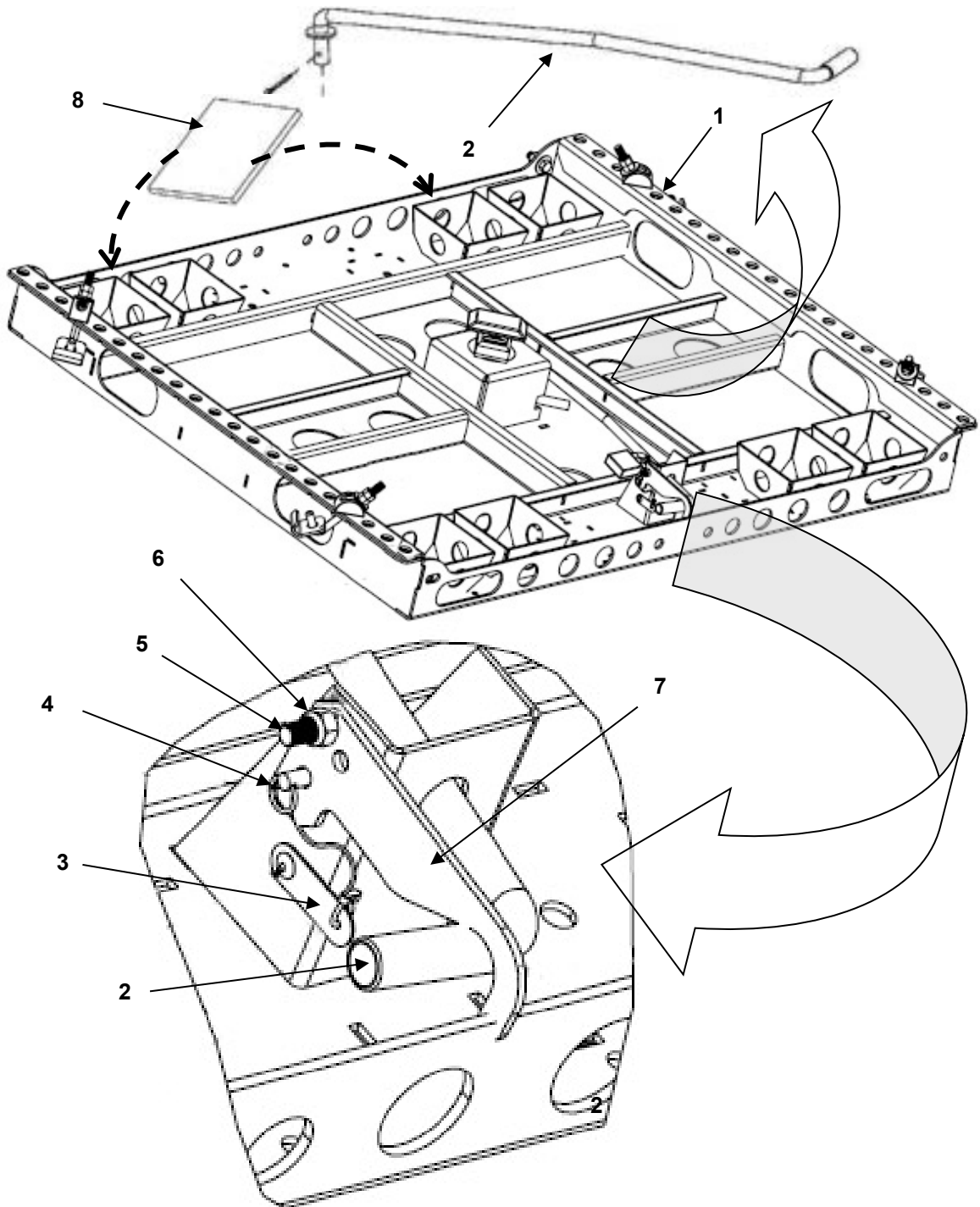


FIGURE 13 QUADCON ADAPTER LOCK HANDLE AND HARDWARE



(1) ITEM NO.	(2) NSN	(3) CAGEC	(4) PART NUMBER	(5) DESCRIPTION AND USABLE ON CODE (UOC)	(6) QTY
				<b>GROUP 02 FIGURE 13 QUADCON ADAPTER LOCK HANDLE AND HARDWARE</b>	
1	8145-01-606-2147	1NSG3	15441100-001	.QUADCON FLOOR ADAPTER MULTI USE GREEN	1
2	Not Assigned	1NSG3	16005001-001	..MODULE LOCK ARM GREEN	1
3	Not Assigned	1NSG3	15312267	..Lanyard 6 " w/eye	1
4	Not Assigned	1NSG3	15312266	..Pin Lock Ball 1/4 x 1	1
5	Not Assigned	1NSG3	78030516	..Bolt GR 8 5/16 x 1	1
6	Not Assigned	1NSG3	78100005	..Nut-Nylon Locknut 5/16- 18	1
7	Not Assigned	1NSG3	16070211	..Catch Lock Rod	1
8	Not Assigned	1NSG3	16501304	..MODULE FOOT PAD	8
1	8145-01-606-2131	1NSG3	15441100-002	.QUADCON FLOOR ADAPTER MULTI USE TAN	1
2	Not Assigned	1NSG3	16005001-002	..MODULE LOCK ARM ASSY TAN	1
3	Not Assigned	1NSG3	15312267	..Lanyard 6 " w/eye	1
4	Not Assigned	1NSG3	15312266	..Pin Lock Ball 1/4 x 1	1
5	Not Assigned	1NSG3	78030516	..Bolt GR 8 5/16 x 1	1
6	Not Assigned	1NSG3	78100005	..Nut-Nylon Locknut 5/16- 18	1
7	Not Assigned	1NSG3	16070211	..Catch Lock Rod	1
8	Not Assigned	1NSG3	16501304	..MODULE FOOT PAD	8
<b>END OF FIGURE 13</b>					

QUADCON ADAPTERS A and B HARDWARE

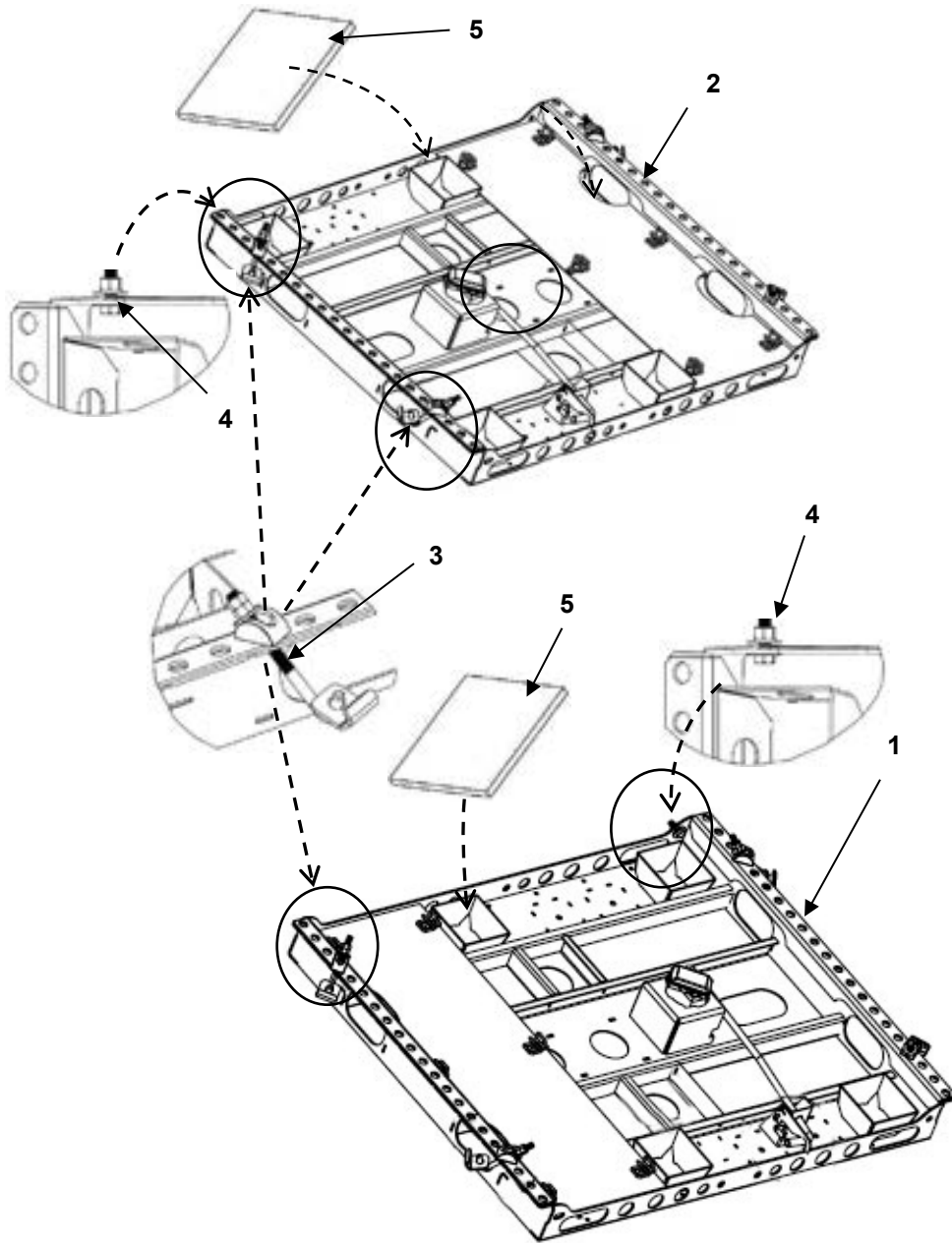


FIGURE 14 QUADCON ADAPTERS A and B HARDWARE

(1) ITEM NO.	(2) NSN	(3) CAGEC	(4) PART NUMBER	(5) DESCRIPTION AND USABLE ON CODE (UOC)	(6) QTY
				<b>GROUP 0201 FIGURE 14 QUADCON ADAPTER ATTACHMENT HARDWARE</b>	
1	8145-01-606-2145	1NSG3	15441120-001	.QUADCON FLOOR ADAPTER A GREEN	1
2	8145-01-606-2141	1NSG3	15441130-001	.QUADCON FLOOR ADAPTER B GREEN	1
3	Not Assigned	1NSG3	15988921-001	..HOOK BOLT HOOK PLATE KIT GREEN UOC F8A, F8B, F8C	4
4	Not Assigned	1NSG3	15988923	.. REAR ADAPTER HARDWARE KIT UOC F8A, F8B, F8C	1
5	Not Assigned	1NSG3	16501304	..MODULE FOOT PADS UOC F8A, F8B, F8C	4
1	8145-01-606-2138	1NSG3	15441120-002	.QUADCON FLOOR ADAPTER A TAN	1
2	8145-01-606-2135	1NSG3	15441130-002	.QUADCON FLOOR ADAPTER B TAN	1
3	Not Assigned	1NSG3	15988921-002	..HOOK BOLT HOOK PLATE KIT GREEN UOC F8A, F8B, F8C	4
4	Not Assigned	1NSG3	15988923	.. REAR ADAPTER HARDWARE KIT UOC F8A, F8B, F8C	1
5	Not Assigned	1NSG3	16501304	..MODULE FOOT PADS UOC F8A, F8B, F8C	4
<b>END OF FIGURE 14</b>					

QUADCON MULTI-USE ADAPTER HARDWARE

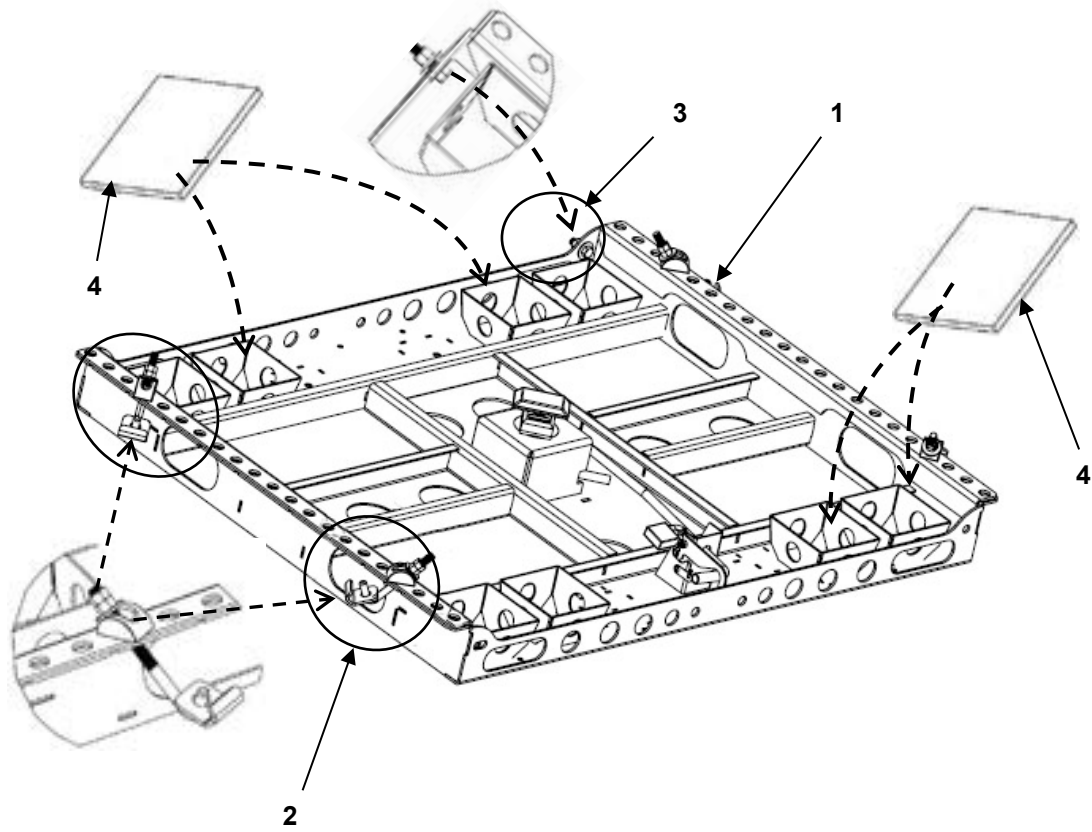


FIGURE 15 QUADCON MULTI-USE ADAPTER HARDWARE

(1) ITEM NO.	(2) NSN	(3) CAGEC	(4) PART NUMBER	(5) DESCRIPTION AND USABLE ON CODE (UOC)	(6) QTY
				<b>GROUP 0202 FIGURE 15 QUADCON MULTI-USE ADAPTER HARDWARE</b>	
1	8145-01-606-2147	1NSG3	15441100-001	.QUADCON FLOOR ADAPTERS MULTI USE GREEN	1
2	Not Assigned	1NSG3	15988921-001	..J BOLT HOOK PLATE KIT GREEN UOC F8A, F8B, F8C	4
3	Not Assigned	1NSG3	15988923	.. REAR ADAPTER HARDWARE KIT UOC F8A, F8B, F8C	1
4	Not Assigned	1NSG3	16501304	..MODULE FOOT PADS UOC F8A, F8B, F8C	8
1	8145-01-606-2131	1NSG3	15441100-002	.QUADCON FLOOR ADAPTERS MULTI USE TAN	1
2	Not Assigned	1NSG3	15988921-002	..J BOLT HOOK PLATE KIT TAN UOC F8A, F8B, F8C	4
3	Not Assigned	1NSG3	15988923	.. REAR ADAPTER HARDWARE KIT UOC F8A, F8B, F8C	1
4	Not Assigned	1NSG3	16501304	..MODULE FOOT PADS UOC F8A, F8B, F8C	8
<b>END OF FIGURE 15</b>					

HOOK BOLT AND PLATE KIT

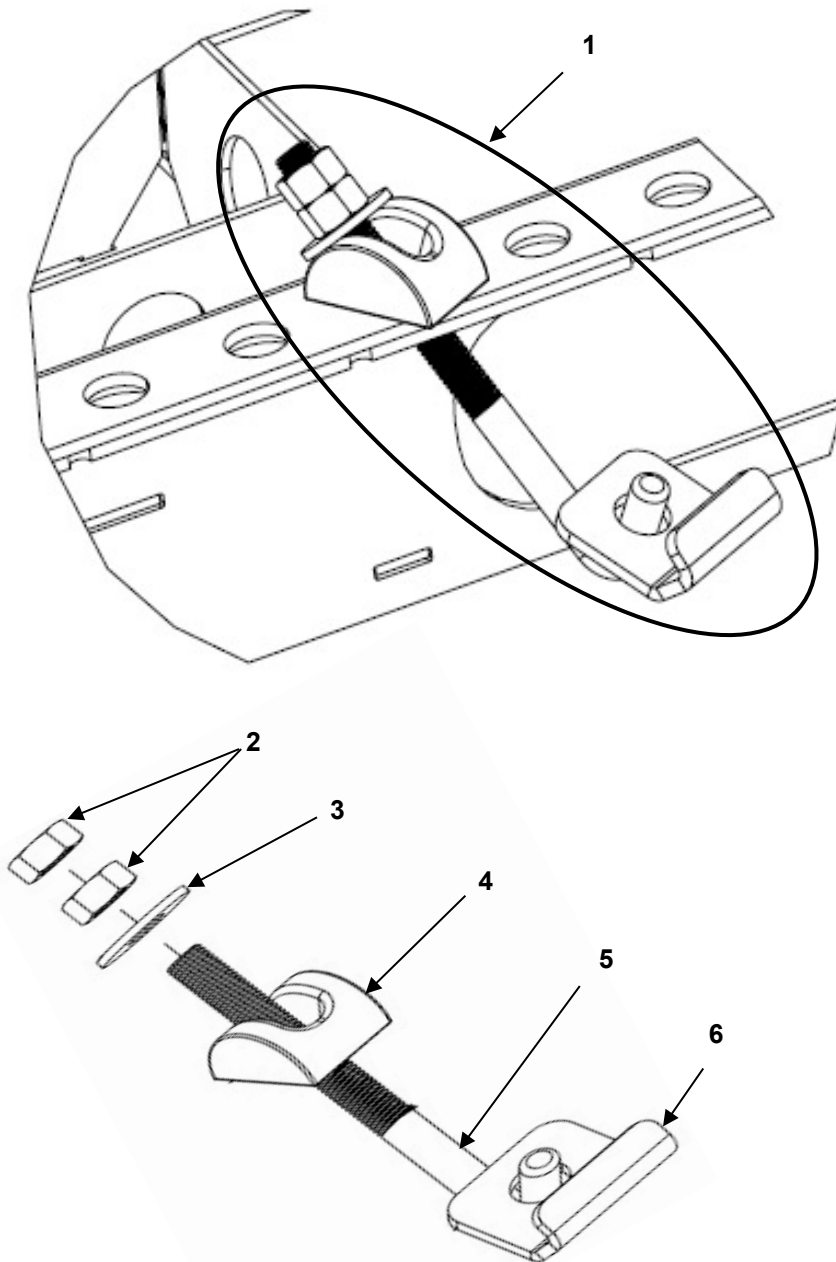


FIGURE 16 HOOK BOLT AND PLATE KIT

(1) ITEM NO.	(2) NSN	(3) CAGEC	(4) PART NUMBER	(5) DESCRIPTION AND USABLE ON CODE (UOC)	(6) QTY
				<b>GROUP 0203 FIGURE 16 HOOK BOLT AND PLATE KIT</b>	
1	Not Assigned	1NSG3	15988921-001	.HOOK BOLT HOOK PLATE KIT GREEN UOC F8A, F8B and F8C	1
1	Not Assigned	1NSG3	15988921-002	.HOOK BOLT HOOK PLATE KIT TAN UOC F8A, F8B and F8C	1
2	Not Assigned	1NSG3	78070308	.. NUT ZP GR8, 1/2 -13 UOC F8A, F8B and F8C	2
3	Not Assigned	1NSG3	78370308	..FLAT WASHER ZP, 1/2" UOC F8A, F8B and F8C	1
4	Not Assigned	1NSG3	15121042	.. HILLSIDE WASHER UOC F8A, F8B and F8C	1
5	Not Assigned	1NSG3	15121060	..ANCHOR J BOLT 1/2 -13x7" UOC F8A, F8B and F8C	1
6	Not Assigned	1NSG3	16070212	..HOOK PLATE UOC F8A, F8B and F8C	1
<b>END OF FIGURE 16</b>					

REAR ATTACHMENT HARDWARE KIT

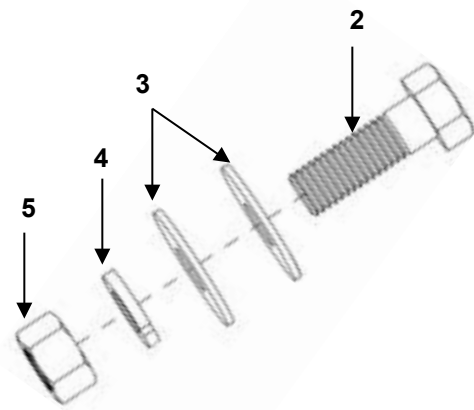
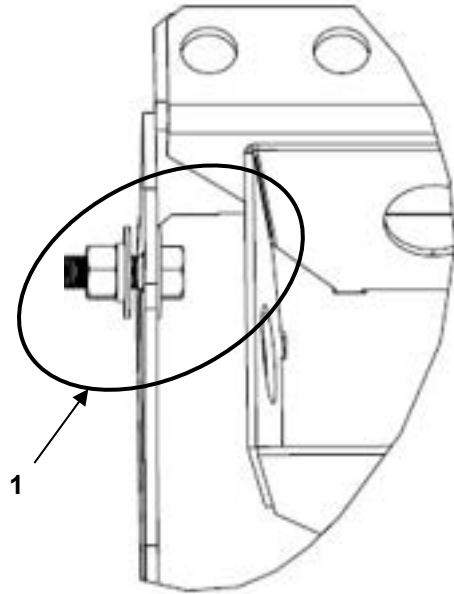


FIGURE 17 REAR ATTACHMENT HARDWARE KIT



(1) ITEM NO.	(2) NSN	(3) CAGEC	(4) PART NUMBER	(5) DESCRIPTION AND USABLE ON CODE (UOC)	(6) QTY
				<b>GROUP 0203 FIGURE 17 REAR ATTACHMENT HARDWARE KIT</b>	
1	Not Assigned	1NSG3	15988923	. REAR ADAPTER MOUNTING HARDWARE KIT UOC F8A, F8B and F8C	1
2	Not Assigned	1NSG3	78030824	..BOLT ZP, GD8, 1/2-13 x 1-1/2 " UOC F8A, F8B and F8C	1
3	Not Assigned	1NSG3	78370307	..FLAT WASHER ZP, 1/2 " UOC F8A, F8B and F8C	2
4	Not Assigned	1NSG3	78330308	..LOCK WASHER HEAVY ZP, 1/2 " UOC F8A, F8B and F8C	1
5	Not Assigned	1NSG3	78070308	.. NUT ZP GR8, 1/2 -13 UOC F8A, F8B and F8C	1
<b>END OF FIGURE 17</b>					

**END OF WORK PACKAGE**

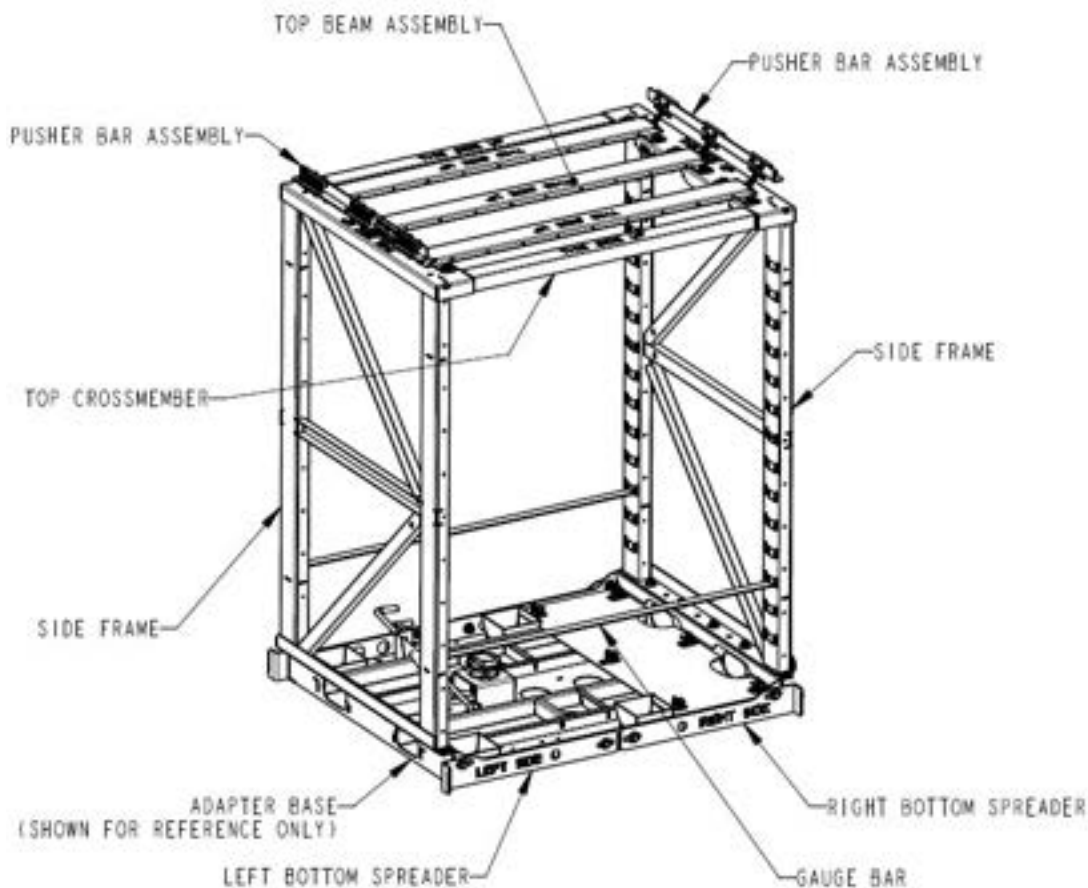
This page was intentionally left blank

## PARTS SUPPORTING INFORMATION

FPU® SYSTEMS OPERATION MANUAL  
(INCLUDING REPAIR PARTS & SPECIAL TOOL LIST)  
BOH QUADCON MODULES, ADAPTERS and RESTRAINT SYSTEM  
BOH FPU Field Pack-up Units

## QUADCON ADAPTER RESTRAINT SYSTEM REPAIR PARTS LIST

## QUADCON ADAPTER RESTRAINT SYSTEM

**Note**

The adapter is shown for reference only

0024 00-1

QUADCON ADAPTER RESTRAINT FRAME ASSEMBLY

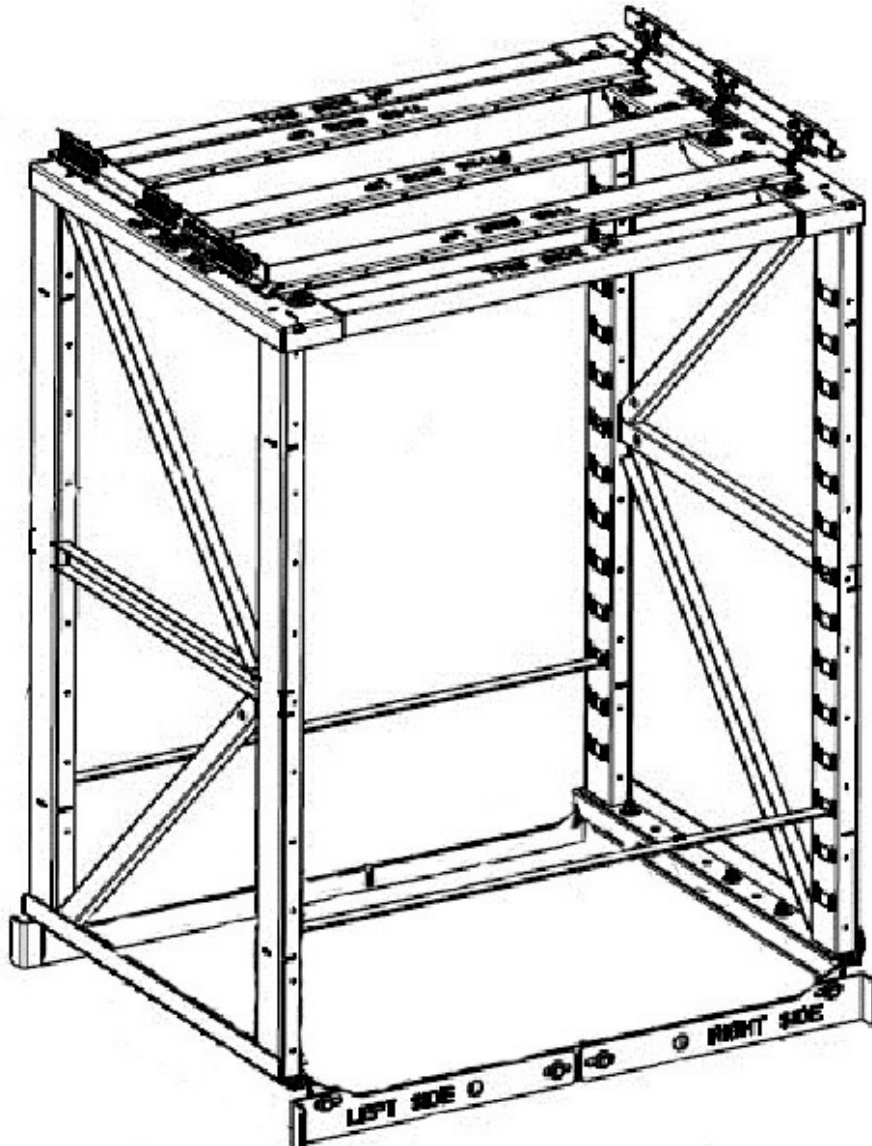


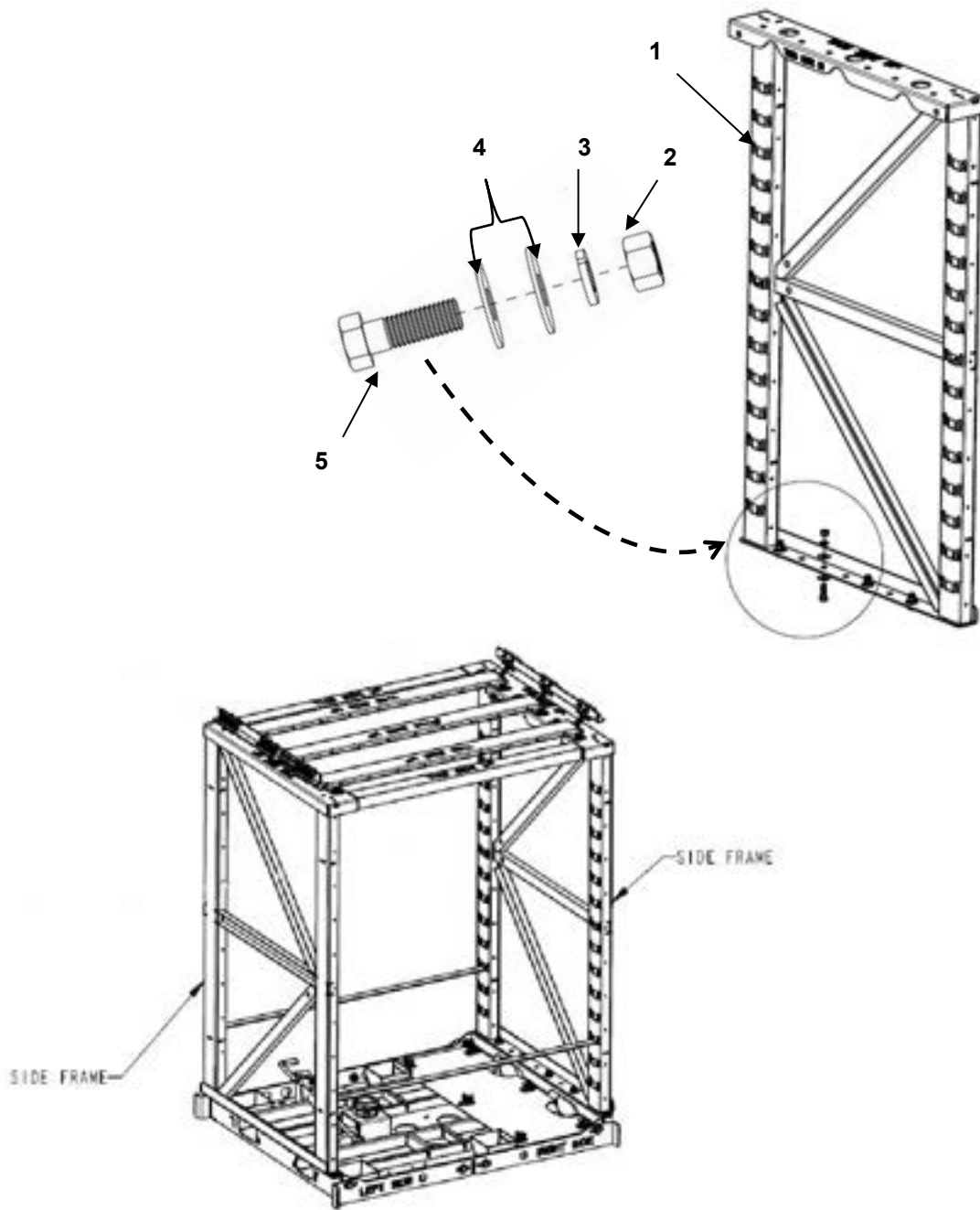
FIGURE 18 QUADCON ADAPTER RESTRAINT FRAME ASSEMBLY

0024 00-2

(1) ITEM NO.	(2) NSN	(3) CAGEC	(4) PART NUMBER	(5) DESCRIPTION AND USABLE ON CODE (UOC)	(6) QTY
				<b>GROUP 0301 FIGURE 18 QUADCON ADAPTER FRAME ASSEMBLY</b>	
1	8145-01-606-2125	1NSG3	15441141-001	.ADAPTER RESTRAINT FRAME ASSEMBLY GREEN	1
1	8145-01-606-2120	1NSG3	15441141-002	.ADAPTER RESTRAINT FRAME ASSEMBLY TAN	1
<b>END OF FIGURE 18</b>					

**SIDE FRAME ASSEMBLY**

0024 00-3



**FIGURE 19 Side Frame Assemblies  
Left or Right**

0024 00-4

(1) ITEM NO.	(2) NSN	(3) CAGEC	(4) PART NUMBER	(5) DESCRIPTION AND USABLE ON CODE (UOC)	(6) QTY
				<b>GROUP 0301 FIGURE 19 SIDE FRAME ASSEMBLIES Left or Right</b>	
1	Not Assigned	1NSG3	15988093-001	.SIDE FRAME WITH HARDWARE GREEN	2
1	Not Assigned	1NSG3	15988093-002	.SIDE FRAME WITH HARDWARE TAN	2
2	Not Assigned	1NSG3	78070308	..NUT HEX ZP GR8 1/2" x13 TPI	4
3	Not Assigned	1NSG3	78330308	..WASHER LOCK SPLIT ZP 1/2"	4
4	Not Assigned	1NSG3	78370307	..WASHER FLAT ZP 1/2"	8
5	Not Assigned	1NSG3	78303824	..BOLT HEX ZP 1/2 -13 x 1-1/2"	4
<b>END OF FIGURE 19</b>					

Right/Left Spreader Bars and Gauge Bar

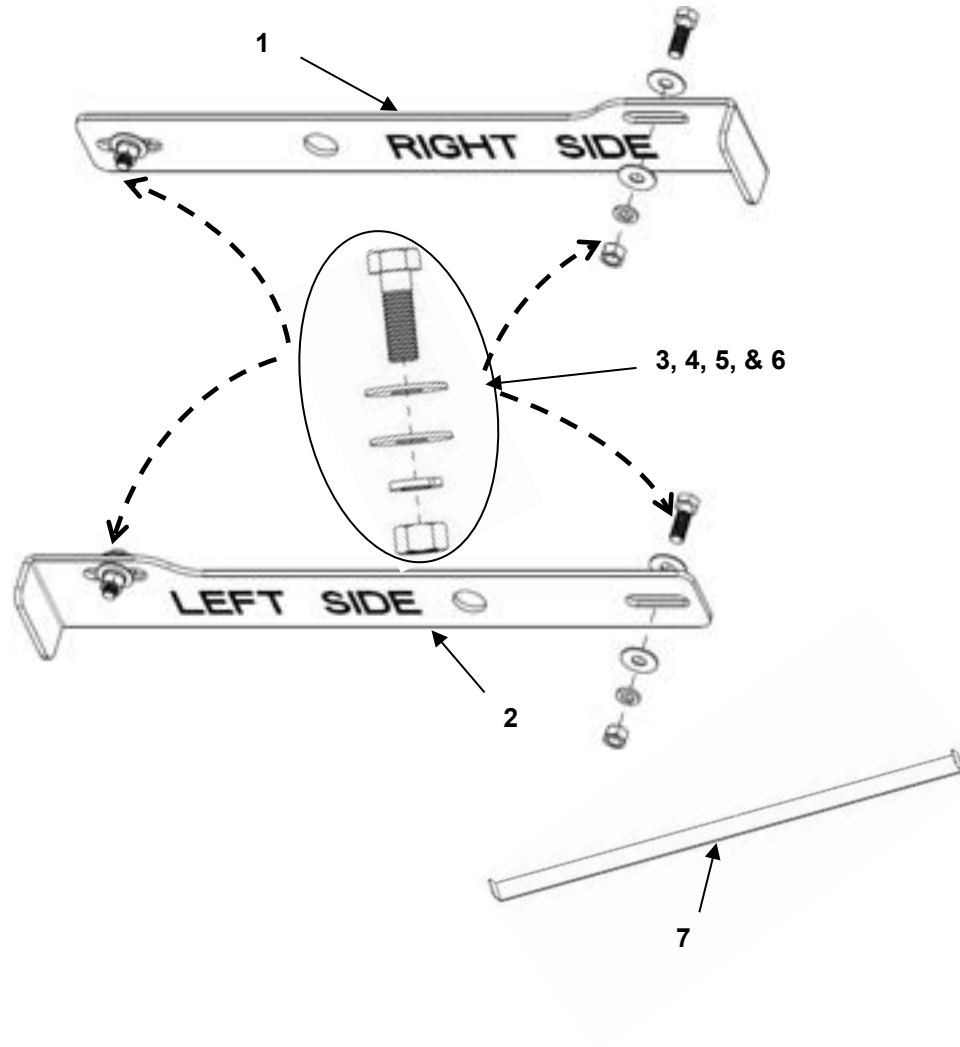


FIGURE 20 Right/Left Spreader Bars and Gauge Bar

0024 00-6



(1) ITEM NO.	(2) NSN	(3) CAGEC	(4) PART NUMBER	(5) DESCRIPTION AND USABLE ON CODE (UOC)	(6) QTY
				<b>GROUP 0301 FIGURE 20 Right/Left Spreader Bars and Gauge Bar</b>	
1	Not Assigned	1NSG3	15988096-001	.RIGHT SPREADER BAR KIT GREEN	1
1	Not Assigned	1NSG3	15988096-002	.RIGHT SPREADER BAR KIT TAN	1
3	Not Assigned	1NSG3	78070308	..NUT HEX ZP GR8 1/2" x13 TPI	2
4	Not Assigned	1NSG3	78330308	..WASHER LOCK SPLIT ZP 1/2"	2
5	Not Assigned	1NSG3	78370307	..WASHER FLAT ZP 1/2"	4
6	Not Assigned	1NSG3	78303824	..BOLT HEX ZP 1/2 -13 x 1-1/2"	2
2	Not Assigned	1NSG3	15988097-001	.LEFT SPREADER BAR KIT GREEN	1
2	Not Assigned	1NSG3	15988097-002	.LEFT SPREADER BAR KIT TAN	1
3	Not Assigned	1NSG3	78070308	..NUT HEX ZP GR8 1/2" x13 TPI	2
4	Not Assigned	1NSG3	78330308	..WASHER LOCK SPLIT ZP 1/2"	2
5	Not Assigned	1NSG3	78370307	..WASHER FLAT ZP 1/2"	4
6	Not Assigned	1NSG3	78303824	..BOLT HEX ZP 1/2 -13 x 1-1/2"	2
7	Not Assigned	1NSG3	15988099	.GAUGE BAR GREEN	2
7	Not Assigned	1NSG3	15988099	.GAUGE BAR TAN	2
<b>END OF FIGURE 20</b>					

0024 00-7

PUSH BAR ASSEMBLIES LEFT OR RIGHT and ADJUSTMENT WRENCH

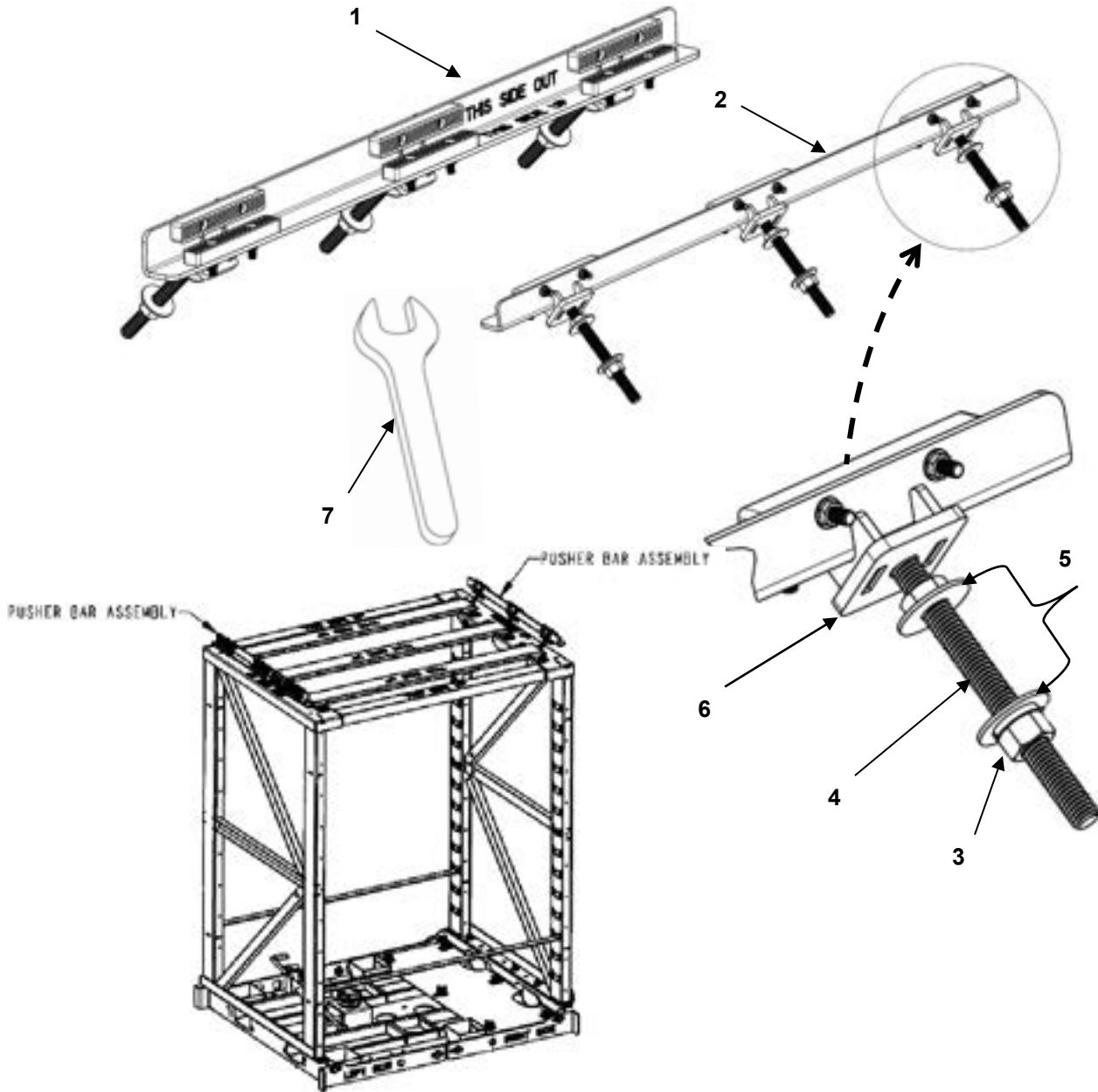


FIGURE 21 PUSH BAR ASSEMBLIES LEFT OR RIGHT and ADJUSTMENT WRENCH

(1) ITEM NO.	(2) NSN	(3) CAGEC	(4) PART NUMBER	(5) DESCRIPTION AND USABLE ON CODE (UOC)	(6) QTY
				<b>GROUP 0301 FIGURE 21 PUSH BAR ASSEMBLIES LEFT OR RIGHT AND ADJUSTMENT WRENCH</b>	
1	Not Assigned	1NSG3	15988095-001	.PUSH BAR ASSEMBLY LEFT OR RIGHT GREEN	2
1	Not Assigned	1NSG3	15988095-002	.PUSH BAR ASSEMBLY LEFT OR RIGHT TAN	2
2	Not Assigned	1NSG3	15441144	..PUSH BAR	1
3	Not Assigned	1NSG3	78070308	..NUT HEX ZP GR8 ½" x13 TPI	3
4	Not Assigned	1NSG3	78330308	..WASHER LOCK SPLIT ZP ½"	3
5	Not Assigned	1NSG3	78370307	..WASHER FLAT ZP ½"	6
6	Not Assigned	1NSG3	78070508	..NUT JAM ZP GR8 ½" x13 TPI	3
7	Not Assigned	1NSG3	15988092-001	.ADJUSTMENT WRENCH GREEN	1
7	Not Assigned	1NSG3	15988092-002	.ADJUSTMENT WRENCH TAN	1
<b>END OF FIGURE 21</b>					

**NOTE**Adjustment Wrench is not part of the **Assembly**

TOP CROSS BEAMS and TOP CROSSMEMBER

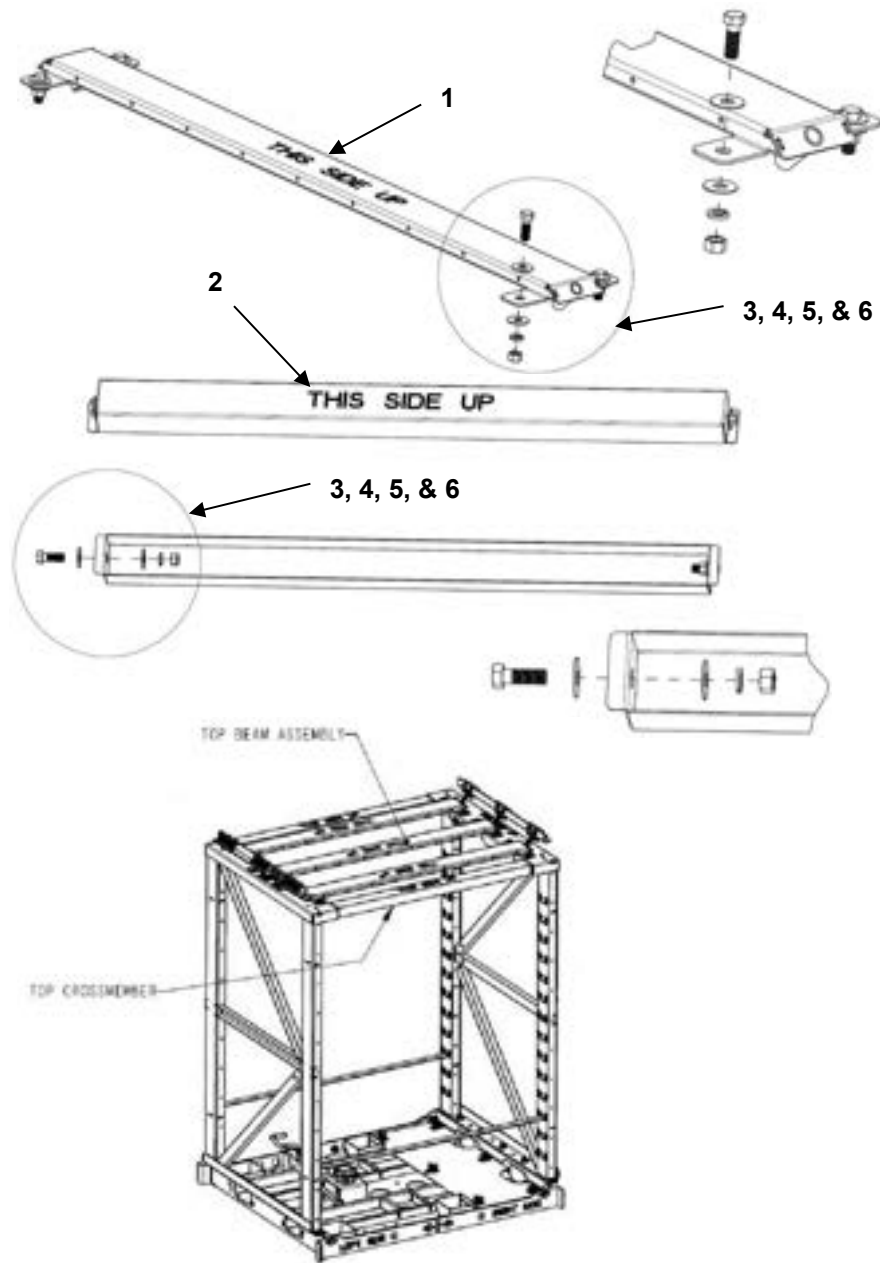


FIGURE 22 TOP CROSS BEAMS and TOP CROSSMEMBER

(1) ITEM NO.	(2) NSN	(3) CAGEC	(4) PART NUMBER	(5) DESCRIPTION AND USABLE ON CODE (UOC)	(6) QTY
				<b>GROUP 0301 FIGURE 22 TOP CROSS BEAMS AND TOP CROSSMEMBER</b>	
1	Not Assigned	1NSG3	15988094-001	.TOP CROSS BEAM GREEN	3
1	Not Assigned	1NSG3	15988094-002	.TOP CROSS BEAM TAN	3
3	Not Assigned	1NSG3	78070308	..NUT HEX ZP GR8 1/2 " x13 TPI	4
4	Not Assigned	1NSG3	78330308	..WASHER LOCK SPLIT ZP 1/2 "	4
5	Not Assigned	1NSG3	78370307	..WASHER FLAT ZP 1/2 "	8
6	Not Assigned	1NSG3	78303824	..BOLT HEX ZP 1/2 -13 x 1-1/2 "	4
2	Not Assigned	1NSG3	15988098-001	.TOP CROSSMEMBER GREEN	2
2	Not Assigned	1NSG3	15988098-002	.TOP CROSSMEMBER TAN	2
3	Not Assigned	1NSG3	78070308	..NUT HEX ZP GR8 1/2 " x13 TPI	2
4	Not Assigned	1NSG3	78330308	..WASHER LOCK SPLIT ZP 1/2 "	2
5	Not Assigned	1NSG3	78370307	..WASHER FLAT ZP 1/2 "	4
6	Not Assigned	1NSG3	78303824	..BOLT HEX ZP 1/2 -13 x 1-1/2 "	2
<b>END OF FIGURE 22</b>					

**END OF WORK PACKAGE**

**0024 00-11**

This page was intentionally left blank

## PARTS SUPPORTING INFORMATION

**FPU® SYSTEMS OPERATION MANUAL  
(INCLUDING REPAIR PARTS & SPECIAL TOOL LIST)  
BOH QUADCON MODULES, ADAPTERS and RESTRAINT SYSTEM  
BOH FPU Field Pack-up Units**

## NSN INDEX

NSN	FIG.	ITEM
8145-01-606-2120	18	1
8145-01-606-2125	18	1
8145-01-606-2131	12	1
8145-01-606-2131	13	1
8145-01-606-2131	15	1
8145-01-606-2131	1	8
8145-01-606-2131	2	7
8145-01-606-2131	3	8
8145-01-606-2131	4	9
8145-01-606-2131	5	7
8145-01-606-2135	14	2
8145-01-606-2138	14	1
8145-01-606-2141	14	2
8145-01-606-2145	14	1
8145-01-606-2147	12	1
8145-01-606-2147	13	1
8145-01-606-2147	15	1
8145-01-606-2147	1	8
8145-01-606-2147	2	7
8145-01-606-2147	3	8
8145-01-606-2147	4	9
8145-01-606-2147	5	7
8145-01-606-2524	4	1A
8145-01-606-2533	5	1A
8145-01-606-2540	4	1

NSN	FIG.	ITEM
8145-01-606-2549	3	1
8145-01-606-2560	2	1
8145-01-606-2565	1	1
8145-01-606-2573	4	1A
8145-01-606-2678	2	1A
8145-01-606-2698	3	1A
8145-01-606-2779	2	1A
8145-01-606-2784	1	1A
8145-01-606-2789	1	1A
8145-01-606-2792	5	1
8145-01-606-2796	5	1
8145-01-606-2800	4	1
8145-01-606-2819	3	1
8145-01-606-2824	2	1
8145-01-606-2830	3	1A
8145-01-606-2833	5	1A
8145-01-606-3447	1	1

**END OF WORK PACKAGE****0025 00-1**

This page was intentionally left blank



**PARTS SUPPORTING INFORMATION**  
**FPU® SYSTEMS OPERATION MANUAL**  
**(INCLUDING REPAIR PARTS & SPECIAL TOOL LIST)**  
**BOH QUADCON MODULES, ADAPTERS and RESTRAINT SYSTEM**  
**BOH FPU Field Pack-up Units**

**PART NUMBER INDEX**

<b>PART NUMBER</b>	<b>FIG.</b>	<b>ITEM</b>
15121042	16	4
15121065	8	3
15121055	8	4
15121060	16	5
15312266	13	4
15312267	13	3
15400135	11	3
15440106	8	1
15440136	11	2
15440164	9	3
15440165	9	2
15440171	9	7
15440172	9	6
15440178	10	3
15440179	10	2
15440185	10	7
15440186	10	6
15640406	8	9
15940112	6	5
15981900	8	6
15981901	8	5
15988099	20	7
15988249	6	4
15988612	8	2
15988613	8	8
15988613	8	8

<b>PART NUMBER</b>	<b>FIG.</b>	<b>ITEM</b>
15988923	14	4
15988923	15	3
15988923	16	1
15988939	9	1
15988940	9	5
15988942	10	5
15988943	11	1
15988951	10	4
15988960	9	4
15988961	9	8
15988962	10	4
15988963	10	8
15988964	11	4
16061037	6	3
16070211	13	7
16070212	16	6
16501304	13	8
16501304	15	4
16501304	14	5
74090520	8	10
74100502	8	7
78030516	13	5
78030824	17	2
78070308	16	2
78070308	17	5

PART NUMBER	FIG.	ITEM
78070308	22	3
78070308	22	5
78070308	21	3
78070308	20	3
78070308	19	2
78070508	21	6
78100005	13	6
78303824	22	6
78303824	19	5
78330308	17	4
78330308	22	4
78330308	19	3
78370307	17	3
78370307	22	5
78370307	19	4
78370308	16	3
78370308	19	2
15440001-001	1	1
15440001-002	1	1
15440002-001	2	1
15440002-002	2	1
15440003-001	3	1
15440003-002	3	1
15440004-001	4	1
15440004-002	4	2
15440005-001	5	1
15440005-002	5	1
15440129-001	1	3
15440129-001	4	7
15440129-001	5	3
15440129-002	1	3
15440129-002	5	3
15440140-001	1	7

PART NUMBER	FIG.	ITEM
15440140-001	2	6
15440140-001	3	7
15440140-001	4	1
15440140-001	5	7
15440140-002	1	7
15440140-002	2	6
15440140-002	3	7
15440140-002	5	7
15440159-001	1	5
15440159-001	2	5
15440159-001	3	5
15440159-001	4	5
15440159-002	1	5
15440159-002	2	5
15440159-002	3	5
15440159-002	4	6
15440166-001	1	4
15440166-001	2	4
15440166-001	3	4
15440166-001	4	4
15440166-001	5	5
15440166-002	1	4
15440166-002	2	4
15440166-002	3	4
15440166-002	4	5
15440166-002	5	5
15440173-001	1	6
15440173-001	2	3
15440173-001	3	3
15440173-001	4	6
15440173-001	5	6
15440173-002	1	6
15440173-002	2	3

PART NUMBER	FIG.	ITEM
15440173-002	3	3
15440173-002	4	7
15440173-002	5	6
15440180-001	3	6
15440180-001	4	3
15440180-001	5	4
15440180-002	3	6
15440180-002	4	4
15440180-002	5	4
15441100-001	15	1
15441100-001	12	1
15441100-001	13	1
15441100-001	14	6
15441100-001	1	8
15441100-001	3	8
15441100-001	4	9
15441100-001	5	7
15441100-002	15	1
15441100-002	12	1
15441100-002	13	1
15441100-002	14	6
15441100-002	1	8
15441100-002	2	7
15441100-002	3	8
15441100-002	4	9
15441100-002	5	7
15441100-001	2	7
15441120-001	12	2
15441120-001	14	1
15441120-002	14	1
15441120-002	12	2
15441130-001	12	3
15441130-001	14	2

PART NUMBER	FIG.	ITEM
15441130-002	14	2
15441130-002	12	3
15441141-001	18	1
15441141-002	18	1
15988092-001	21	7
15988092-002	21	7
15988094-001	22	1
15988094-002	22	1
15988095-001	21	1
15988095-002	21	1
15988098-001	22	2
15988098-002	22	2
15988248-001	6	1
15988248-002	6	1
15988921-001	14	3
15988921-001	15	2
15988921-002	14	3
15988921-002	15	2
15988953-001	6	2
15988953-001	7	1
15988953-002	6	2
15988953-002	7	1
15988954-001	7	2
15988954-002	7	2
15988955-001	7	3
15988955-002	7	3
15988956-001	7	4
15988956-002	7	4
15988957-001	7	5
15988957-002	7	5
16005001-001	13	2
16005001-002	13	2
16061032-001	1	2

<b>PART NUMBER</b>	<b>FIG.</b>	<b>ITEM</b>
16061032-001	2	2
16061032-001	3	2
16061032-001	4	2
16061032-001	5	2
16061032-002	1	2
16061032-002	2	2
16061032-002	3	2
16061032-002	4	3
16061032-002	5	2
30000020G	1	1A
30000020T	1	1A
30000021G	2	1A
30000021T	2	1A
30000022G	3	1A
30000022T	3	1A
30000023G	4	1A
30000023T	4	1A
30000024G	5	1A
30000024T	5	1A

**END OF WORK PACKAGE**

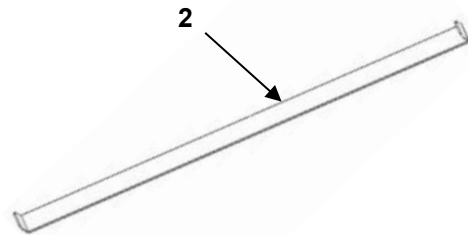
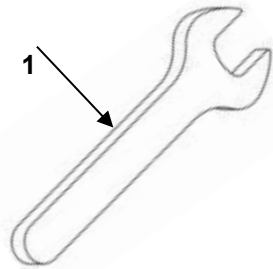
## PARTS SUPPORTING INFORMATION

**FPU® SYSTEMS OPERATION MANUAL  
(INCLUDING REPAIR PARTS & SPECIAL TOOL LIST)  
BOH QUADCON MODULES, ADAPTERS and RESTRAINT SYSTEM  
BOH FPU Field Pack-up Units**

## SPECIAL TOOL LIST

Table 1 Special Tools List

(1) ILLUS NUMBER	(2) NATIONAL STOCK NUMBER	(3) DESCRIPTION, (CAGEC) AND PART NUMBER	(4) USABLE ON CODE	(5) UNIT OF MEASURE	(6) QTY RQR
1	Not Assigned	. ADJUSTMENT WRENCH GREEN 1NSG3 P/N15988092-001	n/a	ea	1
1	Not Assigned	. ADJUSTMENT WRENCH TAN 1NSG3 P/N15988092-002	n/a	ea	1
2	Not Assigned	GAUGE BAR GREEN 1NSG3 P/N15988099-001	n/a	ea	2
2	Not Assigned	GAUGE BAR TAN 1NSG3 P/N15988099-002	n/a	ea	2



END OF WORK PACKAGE

0027 00-1

This page was intentionally left blank

**Boh Environmental, LLC**

**MANUFACTURER'S LIMITED WARRANTY TERMS**

Boh Environmental, LLC (BOH) warrants that the Products offered, including the Field Pack-Up (FPU<sup>®</sup>) System, Containerized Mission Systems, Module Kits, and Bare Base Equipment, shall be free from defects in materials and workmanship for a period of twelve (12) months from date of purchase when normally used, maintained and operated by the Customer. Unused Product containing missing or defective components may be returned, within the warranty period, with proof of purchase, to BOH with transportation charges prepaid. BOH, at its option, shall supply a replacement item(s) or refund the purchase price of the Product. BOH shall in its sole discretion determine whether to replace the defective item(s) with identical items, or with items of identical quality and providing identical performance and functional capabilities. BOH will determine, at its sole discretion, whether or not the claim is a valid warranty item. If so, BOH will pay costs (actual transportation plus handling charge) for shipping of the replacement item, when this option is selected.

This warranty is void if Products have been damaged by the Customer as the result of improper or unreasonable use, or other causes not arising out of defects in material or workmanship. The warranty is also void if the Product has at any time been stored or used other than in accordance with the directions set out in the literature relating to the Product (e.g., user/operation manuals). BOH makes no other warranty or representation concerning the Products except that each will meet the performance specifications set forth in the literature relating to the Product. There are no further warranties, including any warranty of merchantability or fitness for a particular purpose covering the Product.

BOH will, at its option, either (1) credit user in the amount paid for any Product which does not perform to these specifications, or (2) replace or repair such Product, provided user so notifies BOH within twelve (12) months of the Products purchase date. BOH shall not be responsible for any consequential damages to user arising as a result of such performance. The Customer will return the item at their cost, if required. Boh may elect to have its representative inspect the item to validate the claim.

Other product components included in the fabrication of items purchased under contract (e.g., air conditioners and generators) that are not manufactured by Boh Environmental are warranted by their individual manufacturer. Copies of such warranties are supplied with the finished Product or are available through BOH.

Please contact BOH for other contract specific warranty terms

This page was intentionally left blank



## THE METRIC SYSTEM AND EQUIVALENTS

### Linear Measure

1 centimeter = 10 millimeters = .39 inch

1 decimeter = 10 centimeters = 3.94 inches

1 meter = 10 decimeters = 39.37 inches

1 decameter = 10 meters = 32.8 feet

1 hectometer = 10 decameters = 328.08 feet

1 kilometer = 10 hectometers = 3,280.8 feet

### Liquid Measure

1 centiliter = 10 milliliters = .34 fl. ounce

1 deciliter = 10 centiliters = 3.38 fl. ounces

1 liter = 10 deciliters = 33.81 fl. ounces

1 deciliter = 10 liters = 2.64 gallons

1 hectoliter = 10 deciliters = 26.42 gallons

1 kiloliter = 10 hectoliters = 264.18 gallons

### Weights

1 centigram = 10 milligrams = .15 grain

1 decigram = 10 centigrams = 1.54 grains

1 gram = 10 decigrams = .035 ounce

1 dekagram = 10 grams = .35 ounce

1 hectogram = 10 dekagrams = 3.52 ounces

1 kilogram = 10 hectograms = 2.2 pounds

1 quintal = 100 kilograms = 220.46 pounds

1 metric ton = 10 quintals = 1.1 short tons

### Square Measure

1 sq. centimeter = 100 sq. millimeters = .155 sq. inch

1 sq. decimeter = 100 sq. centimeters = 15.5 sq. inches

1 sq. meter (centare) = 100 sq. decimeters = 10.76 sq. feet

1 sq. decameter (are) = 100 sq. meters = 1,076.4 sq. feet

1 sq. hectometer (hectare) = 100 sq. decameters = 2.47 acres

1 sq. kilometer = 100 sq. hectometers = .386 sq. mile

### Cubic Measure

1 cu. centimeter = 1000 cu. millimeters = .06 cu. inch

1 cu. decimeter = 1000 cu. centimeters = 61.02 cu. inches

1 cu. meter = 1000 cu. decimeters = 35.31 feet

## Approximate Conversion Factors

To change	To	Multiply by	To change	To	Multiply by
Inches	centimeters	2.540	ounce/inches	Newton/meters	0.007062
feet	meters	0.305	centimeters	inches	0.394
yards	meters	0.914	meters	feet	3.280
miles	kilometers	1.609	meters	yards	1.094
square inches	square centimeters	6.451	kilometers	miles	0.621
square feet	square meters	0.093	square centimeters	square inches	0.155
square yards	square meters	0.836	square meters	square feet	10.764
square miles	square kilometers	2.590	square meters	square yards	1.196
acres	square hectometers	0.405	square kilometers	square miles	0.386
cubic feet	cubic meters	0.028	square hectometers	acres	2.471
cubic yards	cubic meters	0.765	cubic meters	cubic feet	35.315
fluid ounces	milliliters	29.573	cubic meters	cubic yards	1.308
pints	liters	0.473	milliliters	fluid ounces	0.034
quarts	liters	0.946	liters	pints	2.113
gallons	liters	3.785	liters	quarts	1.057
ounces	grams	28.349	liters	gallons	0.264
pounds	kilograms	0.454	grams	ounces	0.035
short tons	metric tons	0.907	kilograms	pounds	2.205
pound/foot	Newton/meters	1.356	metric tons	short tons	1.102
pound/inches	Newton /meters	0.11296			

## Temperature (Exact)

$\frac{5}{9} (F - 32) = C$   
 \_F Fahrenheit temperature      5/9 (after subtracting 32) Celsius temperature      \_C