

BOH Solutions

# PRODUCT CATALOG

---



## BOH Solutions

P. (985) 674-0725  
E. [info@bohsolutions.com](mailto:info@bohsolutions.com)  
W. [bohsolutions.com](http://bohsolutions.com)



DESIGNED & BUILT  
IN THE USA



ISO 9001:2015  
CERTIFIED

# TABLE OF CONTENTS

<b>Capabilities Overview</b>	<b>3</b>
<b>BOH Value</b>	<b>4</b>
<b>Expeditionary Container Systems</b>	<b>5</b>
ECASL Configuration #1	5
ECASL Configuration #2	6
ECASL Configuration #3	7
ECASL Configuration #4	8
ECASL Configuration #5	9
ABRAMS M1 ECASL Configuration	10
Expeditionary Bulk Storage System (EBSS)	11
<b>ISO Configured Containers</b>	<b>12</b>
FPU-8-2 Container	12
BOH Cargo-12 Container	12
Horizontal Interconnector	13
<b>Bolt-in Storage Aids</b>	<b>14</b>
Parts Storage Aid	14
Bulk Storage Aid	14
Tie-Down Ring	15
<b>Standard FPU® Modules</b>	<b>16</b>
Module #21	17
Module #22	17
Module #23	18
Module #24	18
Module #25	19
Module #26	19
Standard FPU® Module Accessories	20
<b>Bulk FPU® Modules</b>	<b>21</b>
Bulk Module #1	21
Bulk Module #2	21
Bulk Module #3	22
Bulk Module #4	22
Single Floor Plate	23
Double Floor Plate	23
<b>FPU® Portable Drawer Modules</b>	<b>24</b>
Portable Drawer Module #1	25
Portable Drawer Module #2	25
Portable Drawer Module #3	26
Portable Drawer Module #4	26

<b>Specialized FPU® Storage Modules</b>	<b>27</b>
Short / Helo Module	27
HazMat Module	27
Weapons Module Hull	28
Weapons Module Drawers	29
<b>FPU® Module Adapter (TRICON I / II)</b>	<b>30-31</b>
<b>FPU® QUADCON Module Kits</b>	<b>32</b>
QUADCON Module Kit #1	33
QUADCON Module Kit #2	33
QUADCON Module Kit #3	34
QUADCON Module Kit #4	34
QUADCON Module Kit #5	35
QUADCON Restraint System	35
<b>Light Expeditionary Modules (LEM)</b>	<b>36</b>
LEM 36" Configuration #1	37
LEM 36" Configuration #5	37
LEM 70" Configuration #2	38
LEM 70" Configuration #4	38
LEM 70" Configuration #5	39
LEM 70" Configuration #6	39
LEM 70" Configuration #7	40
LEM 70" Configuration #8	40
LEM 70" Configuration #9	41
LEM 70" Configuration #10	41
LEM 70" Configuration #11	42
LEM 70" Configuration #12	42
LEM 1-POS Mounting Plate	43
LEM 2-POS Mounting Plate	43
LEM 3-POS Mounting Plate	43
<b>Multi-platform Module (MPM)</b>	<b>44-45</b>
<b>Mission Systems</b>	<b>46</b>
Expeditionary Joint Operations Center (EJOC®)	46
Expandable Wall Command Center (EWCC)	47
Containerized Command Center (CCC)	48
Modular Workshop Container (MWC)	49
<b>Tailored Solutions</b>	<b>50</b>
<b>How To Purchase BOH Products</b>	<b>51</b>
<b>Product Support and Maintenance</b>	<b>52</b>

# CAPABILITIES OVERVIEW



## Company Overview

BOH is a privately held, ISO 9001:2015 Certified Business that has supported the U.S. Joint Force around the globe since 1998 with our American-designed and built expeditionary logistics solutions. BOH's commitment to the Joint Force is to lead with integrity and first-class customer support to help shape the Expeditionary Force for 2030 and beyond.

## Product Capabilities

**BOH Expeditionary Mobility System:** A side-loading, modular expeditionary warehouse that reduces container footprint by 57% - thus reducing the number of transportation assets required for deployment and reducing troop time packing and unpacking essential supplies needed to sustain combat operations in an expeditionary environment. Soldiers, Sailors, Airmen and Marines "Work Smarter, Not Harder". The FPU Systems features 3 different ISO-certified container systems (8', 12' & 20' L), including a bail bar-equipped Type 1C container; and modular inserts interchangeable between FPU-8 & FPU-20 series.

**Logistics Kits (Drawer/Cabinet Module/Specialized Container):** Providing modular containment for Spare/ Repair Parts, ASL, Shop Stock, General/Special Tools, Medical Supplies, Disaster Relief, POL.

**Mission Systems:** Containerized Mission Systems ideal for command and control, tactical operations and global combat support missions.

## Customer Service

BOH offers free new equipment training and initial stand-up support for our customers in CONUS once the order has been delivered. Training is either done on-site or remotely and includes:

- Best load-out to achieve **MAXIMUM CONTAINER FOOTPRINT REDUCTION**
- How to use BOH's inherent **SYSTEM ADAPTABILITY**
- How to optimize **EFFECTIVE** and **EFFICIENT USE OF BOH SYSTEMS**

## Proven System Benefits....

- **REDUCES CONTAINER FOOTPRINT BY 57%**
- **REDUCE PRIME MOVERS, STRATEGIC AIRFRAMES & FUEL CONSUMPTION**
- **ELIMINATE BLOCKING, BRACING AND FLATRACK REQUIREMENTS**
- **IMPROVES OPERATIONAL EFFICIENCY & INVENTORY ACCOUNTABILITY**
- **DELIVERS STRONGER DURABILITY ON DEPLOYMENT**

**...that deliver SIGNIFICANT COST SAVINGS from the first day of use**

## Manufacturing

BOH products are designed and fabricated in two state-of-the-art, ISO-Certified manufacturing facilities located in Houston, TX and Ft. Worth, TX (approximately 750,000 SF combined capacity). Significant investments in the latest technology and automation allow BOH to manufacture products at a greater rate and with greater efficiencies, while ensuring a consistent, quality, and durable product that brings significant value to our customers.

**DLA Contract No: SPE8ED-19-D-0001**

**Cage Code: 1NSG3, 6GBG2**

**NAICS Code: 332311, 332439**

**DUNS: 115457215**

## BOH Saves the US Joint Force Significant Cost by Reducing ISO Container Footprint by an Average of 57%

### GARRISON / HOME STATION



### PRE-DEPLOYMENT / TRAINING



**Before**



**AFTER**

### RETROGRADE / RESET

REDUCE  
INVENTORY  
TIME &  
SIMPLIFIES  
CUSTOMS  
INSPECTIONS

ENHANCE  
PROPERTY  
ACCOUNTABILITY  
& REDUCE  
PILFERAGE

#### Traditional ISO Containers



VS.

#### FPU® System



REDUCE  
CONTAINER AND  
MATERIAL REPAIR &  
REPLACEMENT

ELIMINATE  
BLOCKING, BRACING  
AND FLATRACK  
REQUIREMENTS

REDUCE  
DAMAGE TO  
CONTAINERIZED  
MATERIEL

REDUCE PRIME  
MOVERS,  
STRATEGIC  
AIRFRAMES & FUEL  
CONSUMPTION

REDUCE  
CONVOY  
SECURITY &  
MAINTENANCE



### DEPLOYMENT / THEATER

*"FPUs allow Troops to work smarter not harder"*



# EXPEDITIONARY CONTAINER SYSTEMS

	Component Description	Component Part #	QTY	U/I
1	FPU 20-3 (With Bail Bar)	15002003	1	EA
2	Bulk Storage Aid	15310022-1POS	1	
3	Tie-Down Rings	16509501	8	
4	Bulk Module #3 (3 Bins)	15410203	2	
5	Removable Cradle	15530122	2	

**Targeted Application: Palletized Bulk, floor-loaded Bulk and Battery/POL Bulk Material**

## Key Features:

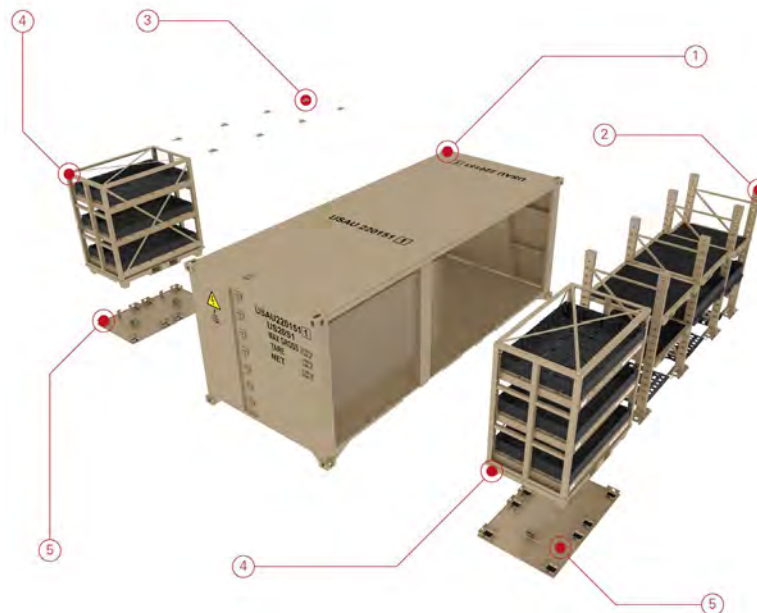
Fully configured FPU-20-3 System that can be purchased by a single NSN or Part Number (System components listed above)

- 8'W x 8'H x 20'L ISO-certified and CSC safety approved, Special Container with side load doors and bail bar
- Tare Weight: 12,750 lbs.; Maximum Capacity: 37,000 lbs.
- Fully compatible with the HEMTT-LHS, PLS, ECHU attachment, M-1076 PLS Trailer and LVSR.

## FPU-20-3 ECASL Config. #1

NSN: 8145-01-654-0925  
P/N: 75000001-001  
(Green)

NSN: 8145-01-654-0930  
P/N: 75000001-002  
(Tan)



# EXPEDITIONARY CONTAINER SYSTEMS

	Component Description	Component Part #	QTY	U/I
1	FPU 20-3 (With Bail Bar)	15002003	1	EA
2	Bulk Storage Aid	15310022-1POS	2	
3	Bulk Storage Aid (Rear)	15310034	2	

## Targeted Application: Palletized Bulk

### Key Features:

- Fully configured FPU-20-3 System that can be purchased by a single NSN or Part Number (System components listed above)
- 8'W x 8'H x 20'L ISO-certified and CSC safety approved, Special Container with side load doors and bail bar
- Tare Weight: 11,700 lbs.; Maximum Capacity: 37,000 lbs.
- Fully compatible with the HEMTT-LHS, PLS, ECHU attachment, M-1076 PLS Trailer and LVSR.

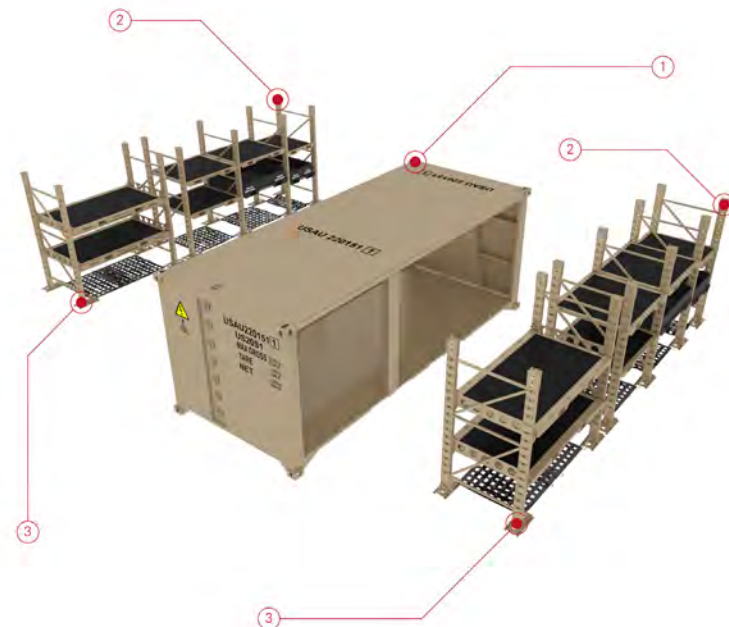
## FPU-20-3 ECASL Config. #2

NSN: 8145-01-654-0588

P/N: 75000002-001  
(Green)

NSN: 8145-01-654-0593

P/N: 75000002-002  
(Tan)



# EXPEDITIONARY CONTAINER SYSTEMS

	Component Description	Component Part #	QTY	U/I
1	FPU 20-3 (With Bail Bar)	15002003	1	EA
2	Parts Storage Aid	15310023-1POS	1	
3	Tie-Down Rings	16509501	8	
4	Module #21	15700021	1	
5	Module #22	15700022	1	
6	Module #23	15700023	1	
7	Module #26	15700026	1	
8	Removable Cradle	15530122	2	
	4" Drawer Divider	15524001	4	
	6" Drawer Divider	15524004	2	
	8" Drawer Divider	15524005	1	
	10" Drawer Divider	15524006	2	
	12" Drawer Divider	15524007	1	
	16" Drawer Divider	15524008	2	

\* Drawer Dividers not pictured in Configuration diagram

**Targeted Application: Small, medium, medium/large Parts and Bulk floor-loaded material**

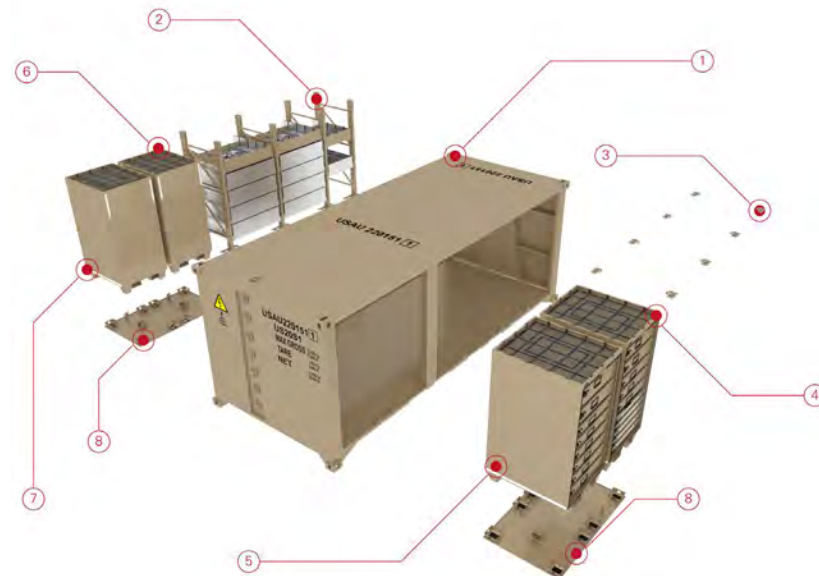
## Key Features:

- Fully configured FPU-20-3 System that can be purchased by a single NSN or Part Number (System components listed above)
- 8'W x 8'H x 20'L ISO-certified and CSC safety approved, Special Container with side load doors and bail bar
- Tare Weight: 16,974 lbs.; Maximum Capacity: 37,000 lbs.
- Fully compatible with the HEMTT-LHS, PLS, ECHU attachment, M-1076 PLS Trailer and LVSR.

## FPU-20-3 ECASL Config. #3

NSN: 8145-01-654-0914  
P/N: 75000003-001  
(Green)

NSN: 8145-01-654-0919  
P/N: 75000003-002  
(Tan)



# EXPEDITIONARY CONTAINER SYSTEMS

	Component Description	Component Part #	QTY	U/I
1	FPU 20-3 (With Bail Bar)	15002003	1	EA
2	Bulk Storage Aid	15310022-1POS	1	
3	Parts Storage Aid	15310023-1POS	1	
4	Module #21	15700021	1	
5	Module #22	15700022	2	
6	Module #23	15700023	1	
7	Removable Cradle	15530122	2	
	4" Drawer Divider	15524001	2	
	6" Drawer Divider	15524004	4	
	8" Drawer Divider	15524005	2	
	10" Drawer Divider	15524006	4	
	12" Drawer Divider	15524007	1	
	16" Drawer Divider	15524008	1	

\* Drawer Dividers not pictured in Configuration diagram

**Targeted Application: Palletized Bulk, small, medium and medium/large Parts material**

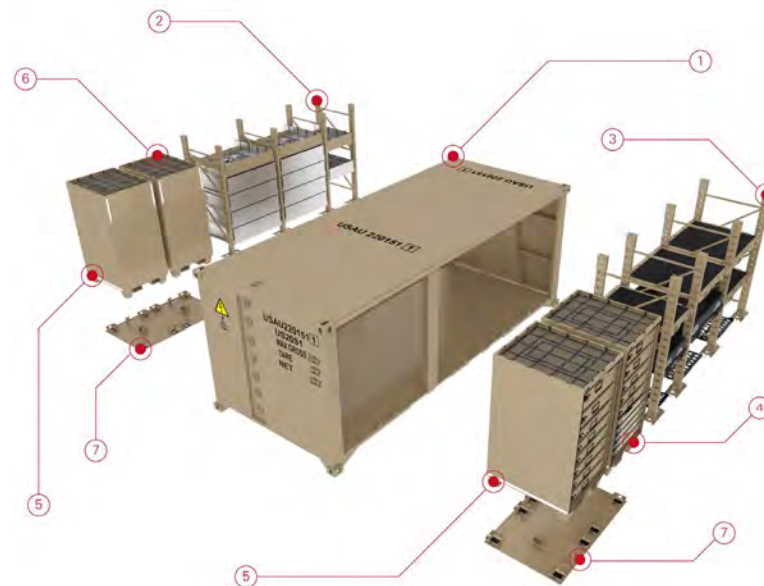
## Key Features:

- Fully configured FPU-20-3 System that can be purchased by a single NSN or Part Number (System components listed above)
- 8'W x 8'H x 20'L ISO-certified and CSC safety approved, Special Container with side load doors and bail bar
- Tare Weight: 18,218 lbs.; Maximum Capacity: 37,000 lbs.
- Fully compatible with the HEMTT-LHS, PLS, ECHU attachment, M-1076 PLS Trailer and LVSR.

## FPU-20-3 ECASL Config. #4

NSN: 8145-01-654-0942  
P/N: 75000004-001  
(Green)

NSN: 8145-01-654-0943  
P/N: 75000004-002  
(Tan)





# EXPEDITIONARY CONTAINER SYSTEMS

	Component Description	Component Part #	QTY	U/I
1	FPU 20-3 (With Bail Bar)	15002003	1	EA
2	Bulk Storage Aid	15310022-1POS	1	
3	Parts Storage Aid	15310023-1POS	1	
4	Module #21	15700021	1	
5	Module #22	15700022	1	
6	Module #23	15700023	1	
7	Module #26	15700026	1	
8	Removable Cradle	15530122	2	
	4" Drawer Divider	15524001	4	
	6" Drawer Divider	15524004	2	
	8" Drawer Divider	15524005	1	
	10" Drawer Divider	15524006	2	
	12" Drawer Divider	15524007	1	
	16" Drawer Divider	15524008	2	

\* Drawer Dividers not pictured in Configuration diagram

**Targeted Application: Palletized bulk, small, medium and medium/large Parts material**

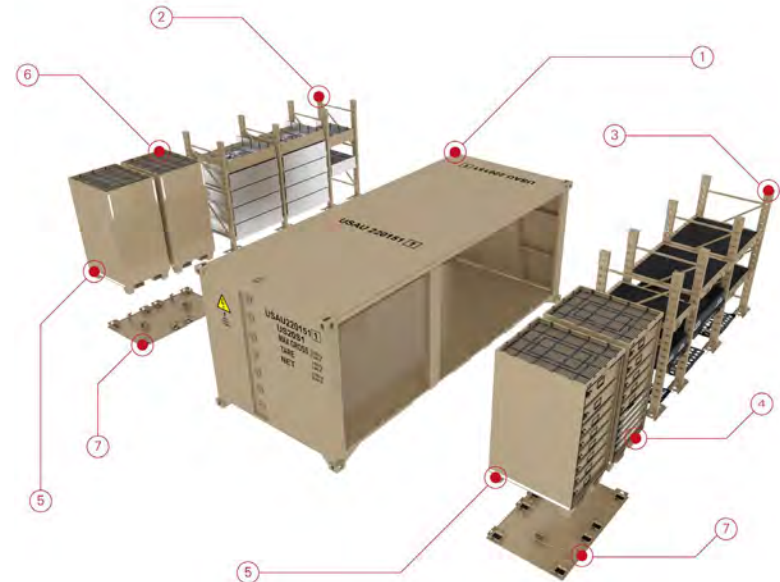
## Key Features:

- Fully configured FPU-20-3 System that can be purchased by a single NSN or Part Number (System components listed above)
- 8'W x 8'H x 20'L ISO-certified and CSC safety approved, Special Container with side load doors and bail bar
- Tare Weight: 17,988 lbs.; Maximum Capacity: 37,000 lbs.
- Fully compatible with the HEMTT-LHS, PLS, ECHU attachment, M-1076 PLS Trailer and LVSR.

## FPU-20-3 ECASL Config. #5

NSN: 8145-01-654-0963  
P/N: 75000005-001  
(Green)

NSN: 8145-01-654-0968  
P/N: 75000005-002  
(Tan)



# EXPEDITIONARY CONTAINER SYSTEMS

	Component Description	Component Part #	QTY	U/I
1	FPU 20-3 (With Bail Bar)	15002003	1	EA
2	48" Parts Storage Aid	15980003	2	
3	Tie-Down Ring	15700021	8	
4	Module #26	15700026	1	
5	Module #23	15700023	1	
6	Bulk Module #3	15530122	2	
7	Removable Cradle	15530122	2	

**Targeted Application: Medium, medium/large Parts, Bulk floor-loaded material and specialized tools/ equipment**

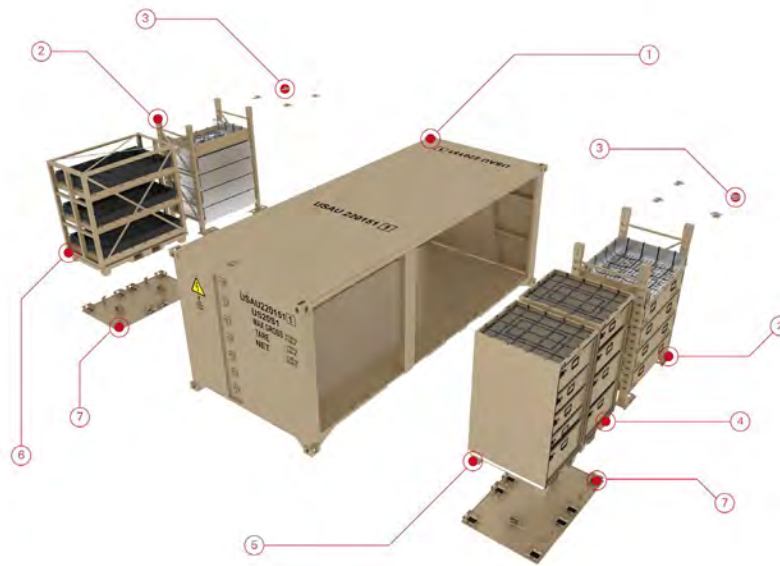
## Key Features:

- Fully configured FPU-20-3 System that can be purchased by a single NSN or Part Number (System components listed above)
- 8'W x 8'H x 20'L ISO-certified and CSC safety approved, Special Container with side load doors and bail bar
- Tare Weight: 14,450 lbs.; Maximum Capacity: 37,000 lbs.
- Fully compatible with the HEMTT-LHS, PLS, ECHU attachment, M-1076 PLS Trailer and LVSR.

## FPU-20-3 ECASL Config. #6

NSN: 8150-01-690-2881  
P/N: 15980004-001  
(Green)

NSN: 8150-01-691-8687  
P/N: 15980004-002  
(Tan)



# EXPEDITIONARY CONTAINER SYSTEMS

Expeditionary Bulk Storage System (EBSS) is a 20' ISO-Certified and CSC Safety ISO-certified for 9-high stacking and CSC Safety Approved side-load special container with an intergraded bail bar.

The EBSS comes with 20 tie-down rings recessed into the container floor and two tie-down locations on each corner post for a total of 28 tie-down points to secure bulk material.

The EBSS is designed to better mobilize and protect bulk material.

## Targeted Application: Floor-load Bulk

### Key Features:

- 8'W x 8'H x 20'L Side-load Special Container System with bi-folding doors
- Fully compatible with the HEMTT-LHS, PLS, ECHU attachment, M-1076 PLS Trailer and LVSR.
- Tare weight 7,700 lbs.; Maximum capacity 37,000 lbs.
- ISO-certified for 9-high stacking and CSC Safety Approved
- Built with Corten weathering steel for corrosion resistance
- Provides storage for Class I, II, III(P), IV, VII, VIII, IX and MTOE
- 20 Tie-Down Rings recessed into the container floor with 2 tie-down points located on each corner post (28 total tie-down points)

## Expeditionary Bulk Storage System (EBSS)

NSN: 8145-01-695-4547  
P/N: 15002005-001  
(Green)

NSN: 8145-01-695-4674  
P/N: 15002005-002  
(Tan)



# ISO CONFIGURED CONTAINERS



**FPU-8 Container**

**NSN:** 8150-01-473-1213

**P/N:** 15000802G

(Green)

**NSN:** 8150-01-518-8749

**P/N:** 15000802T

(Tan)

## Key Features:

- 8'W x 7.6'H x 7'L Container ISO-Certified and CSC safety approved when linked together with a Boh-Cargo-12-1 using ISO Lock Connectors (NSN – 8145-01-523-4120).
- Tare Weight: 3,550 lbs.; Maximum Capacity: 18,000 lbs.
- Side Load with Recessing Pocket Doors
- Accepts 4 storage / shipping / life support modules
- Approved for air transport aboard USAF C-130, C-5, and C-17 aircraft
- PLS / Flatrack compatible



**BOH CARGO-12 Container**

**NSN:** 8150-01-502-0581

**P/N:** 15001201G

(Green)

**NSN:** 8150-01-518-8859

**P/N:** 15001201T

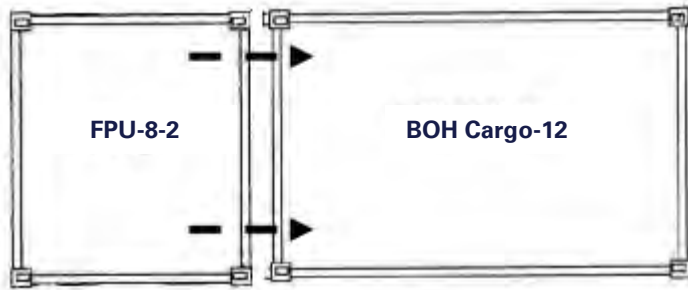
(Tan)

## Key Features:

- 153"L x 96"W x 92"H Container ISO Certified and CSC safety approved when linked together with a Boh-Cargo-12 using ISO connectors (NSN – 8145-01-523-4120)
- Tare Weight: 5,000 lbs.; Maximum Capacity: 18,000 lbs.
- Side Load with bi-fold doors
- Accepts a series of pallet and drawer storage aids and or tie-down rings for storage of bulk and parts



# ISO CONFIGURED CONTAINERS



**Horizontal Interconnector**

NSN: 8145-01-523-4120 P/N: 15150108

The FPU-8 and Boh-Cargo-12 Container's link with the use of the ISO Horizontal Interconnectors to form a 20-foot, ISO envelope for deployment (can be de-linked in theater). Meets requirements of the International Convention for Safe Containers (CSC).

- Certified CSC 1CX in accordance with ISO 668 and ISO 1496-1
- Approved by U.S. Air Force for transport on C-130, C-5 and C-17 aircraft.
- CSC Safety Approval Testing performed by American Bureau of Shipping, 5 August 2005

FPU-8-2/ BOH-Cargo-12 on  
board the USS Bob Hope LMSR



FPU-8-2/ BOH-Cargo-12 being  
loaded into a C-17

# BOLT-IN STORAGE AIDS



**Parts Storage Aid**

**NSN:** 8145-01-524-0249

**P/N:** 15310023-1POS

(Green or Tan)

## Parts Storage Aid fills half of the BOH CARGO-12 container

4 fully adjustable vertical rack stanchions with all slide assemblies and installation hardware. The parts set includes:

- 8 each 12" deep extending drawers
- 1 each 2" (small) extending drawers w/ cargo netting
- 1 each 8" (small) extending drawers w/ cargo netting
- 2 each 2" (medium) extending drawers w/ cargo netting

All drawers are fully extending, equipped with rotating lock-in / lock-out handles and adjustable dividers. The small/medium 2" drawers are also equipped with cargo netting.



**Bulk Storage Aid**

**NSN:** 8145-01-524-0244

**P/N:** 15310022-1POS

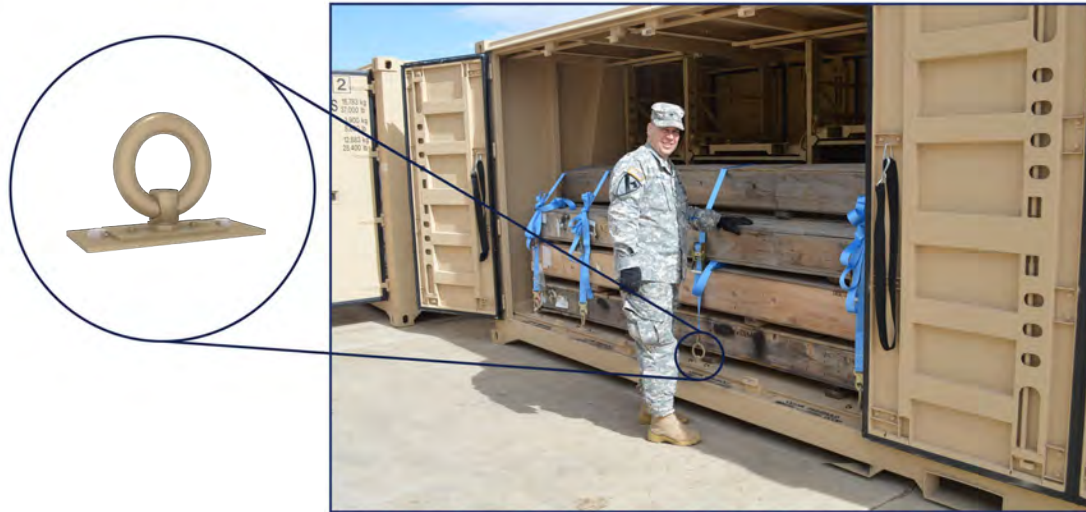
(Green or Tan)

## Bulk Storage Aid fills half of the BOH CARGO-12 container

4 fully adjustable vertical rack stanchions with all slide assemblies, installation hardware with an over-center pallet locking and securing feature for rough terrain stability. The pallet set includes:

- 3 each 48" wide, individually locking cargo pallets
- 1 each 30" wide, individually locking cargo pallets
- 1 each 48" wide HAZMAT pallet with cargo netting
- 1 each 30" wide HAZMAT pallet with cargo netting
- 3 floor position cargo nets

All pallets are fitted with D-rings inserted around the edge for use with a quantity of 4 supplied 2" cargo ratchet straps. All Hazmat pallets are TOFF-coated and equipped with cargo netting.



## Tie-Down Ring

**NSN:** 8145-01-513-6262

**P/N:** 16509501

(Green or Tan)

**8 qty Tie-Down Rings (sold individually) fill half of the BOH-CARGO-12 container Doesn't include cargo straps.**

Tie-down locations provide storage for bulk floor-load material. Each Tie-Down Ring is rated at 5,000 lbs. and is tested against MIL-STD-209.

The FPU® Standard Storage Modules comes in various configurations and are designed to accommodate small and medium material. Module drawers come in 4-inch with retention lid to secure small loose parts in individual compartments, 6-inch, 8-inch, 10-inch, 12-inch and 16-inch. The drawers have internal drawer dividers that are adjustable every 2-inches front to back and vary side to side depending on drawer size.

The bulk drawers have nets that secure the loose material. These modules are extremely rugged and were designed for the dynamics realized during mobile application. 4", 6", 8" and 10" have a maximum capacity of 200 lbs. 12" and 16" Drawers have a maximum capacity of 400 lbs.

Modules are secured to the FPU container with our twist lock system. Using a forklift and the forklift pockets located at the bottom of the module, they can be easily removed by pulling the locking arm outward to release the module from the twist lock. Modules consist of a removable locking bar to secure drawers during transport, individual drawer locks, a front vinyl dust cover to resist water and dust from penetrating the drawers when operating outside the FPU container. BOH Standard Storage Modules are approved for airlift with or without the FPU container.



Standard FPU Module Moved by Forklift

## PRODUCT OVERVIEW

- Dimensions: 35" Length, 43" Width, 74" Height
- Tare Weight: 800 lb. – 1700 lb.
- Standard Module Configurations for small to intermediate parts storage are available in 4", 6", 8", 10", 12", and 16" deep drawers.
- Maximum drawer capacity ranges from 200 to 400 lb.
- BOH's FPU Module Quick Release/Lock Down System Integrated into each Module
- Compatible with FPU-8 and FPU-20 Series of Containers and the BOH FPU® Module Adapter Plate for TRICON I/II Containers



Standard FPU Modules Utilized for Warehouse Modernization



Standard FPU Modules Inside an FPU-8-2



Standard FPU Module being Inventoried



# STANDARD FPU® MODULES



**Module #21**

**NSN:** 8145-01-502-2494

**P/N:** 15700021

(Green or Tan)

## Key Features:

- Dimensions: 35"W x 43"D x 74"H
- Tare Weight: 1,676 lb.
- 10 Drawers
- Top mounted, adjustable net
- 308 Standard compartments
- Expandable to 920 compartments
- Removable lid on 4" drawer
- High Security Locking Bar
- Accommodates 5200 and 5300 series locks



**Module #22**

**NSN:** 8145-01-523-4040

**P/N:** 15700022

(Green or Tan)

## Key Features:

- Dimensions: 35"W x 43"D x 74"H
- Tare Weight: 1,440 lb.
- 8 Drawers
- Top mounted, adjustable net
- 192 Standard compartments
- Expandable to 720 compartments
- High Security Locking Bar
- Accommodates 5200 and 5300 series locks

# STANDARD FPU® MODULES



**Module #23**

**NSN:** 8145-01-523-4011  
**P/N:** 15700023  
(Green or Tan)

## Key Features:

- Dimensions: 35"W x 43"D x 74"H
- Tare Weight: 1,275 lb.
- 5 Drawers
- Top mounted, adjustable net
- 48 Standard compartments
- Expandable to 262 compartments
- High Security Locking Bar
- Accommodates 5200 and 5300 series locks



**Module #24**

**NSN:** 8145-01-501-0892  
**P/N:** 15700024  
(Green or Tan)

## Key Features:

- Dimensions: 35"W x 43"D x 74"H
- Tare Weight: 1,343 lb.
- 5 Drawers
- Top mounted, adjustable net
- 36 Standard compartments
- Expandable to 220 compartments
- High Security Locking Bar
- Accommodates 5200 and 5300 series locks

# STANDARD FPU® MODULES



**Module #25**

**NSN:** 8145-01-501-0896  
**P/N:** 15700025  
(Green or Tan)

## Key Features:

- Dimensions: 35"W x 43"D x 74"H
- Tare Weight: 807 lb.
- 4 Bulk Drawers with adjustable net
- Top mounted, adjustable net
- High Security Locking Bar
- Accommodates 5200 and 5300 series locks



**Module #26**

**NSN:** 8145-01-501-0900  
**P/N:** 15700026  
(Green or Tan)

## Key Features:

- Dimensions: 35"W x 43"D x 74"H
- Tare Weight: 1,240 lb.
- 4 Drawers
- Top mounted, adjustable net
- 30 Standard compartments
- Expandable to 186 compartments
- High Security Locking Bar
- Accommodates 5200 and 5300 series locks

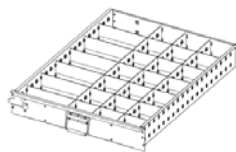
## Additional Divider Sets for Standard FPU® Modules

Divider Set	NSN	Part Number	Description
4" Drawer Divider Option #1	8145-01-523-4068	15524001	1 ea - Longitudinal & 50 ea - Cross.
4" Drawer Divider Option #2	8145-01-523-4592	15524002	30 ea - 6" Cross & 10 ea - 12" Cross..
6" Drawer Divider Option #1	8145-01-523-4591	15524003	3 ea - 12" Cross & 12 ea - 6" Cross
6" Drawer Divider Option #2	8145-01-523-4149	15524004	1 ea - Longitudinal & 30 ea - 6" Cross
8" Drawer Divider Option	8145-01-523-4145	15524005	12 ea - 10" Cross
10" Drawer Divider Option	8145-01-523-4142	15524006	12 ea - 10" Cross
12" Drawer Divider Option	8145-01-523-4140	15524007	6 ea - 15" Cross
16" Drawer Divider Option	8145-01-523-4138	15524008	6 ea - 15" Cross



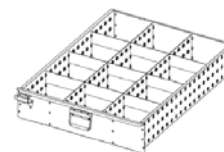
### 4" Drawer

40 Standard Compartments  
(Expandable to 100 Compartments with  
Additional Divider Set)



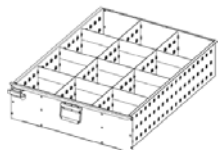
### 6" Drawer

28 Standard Compartments  
(Expandable to 100 Compartments with  
Additional Divider Set)



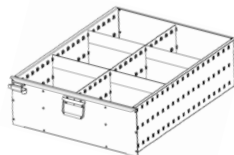
### 8" Drawer

12 Standard Compartments  
(Expandable to 60 Compartments with  
Additional Divider Set)



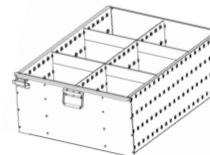
### 10" Drawer

12 Standard Compartments  
(Expandable to 60 Compartments with  
Additional Divider Set)



### 12" Drawer

6 Standard Compartments  
(Expandable to 40 Compartments with  
Additional Divider Set)



### 16" Drawer

6 Standard Compartments  
(Expandable to 40 Compartments with  
Additional Divider Set)

## Caster Set for BOH Modules



NSN: 8145-01-473-3024  
P/N: 15510000

Module Casters come in sets of 4 ea.  
Compatible with all FPU® Modules and  
BOH's Multi-platform Module (MPM™)





**Bulk Module #1**

**NSN:** 8145-01-588-3689  
**P/N:** 15410201  
(Green or Tan)

**Key Features:**

- Dimensions: 72"W x 43"D x 74"H
- Tare Weight: 1060 lbs.
- 3 extendable trays to assist with securing multiple medium sized items.
- Integrated with BOH's FPU Module Quick Release/ Lock Down system.
- Compatible with FPU-8 and FPU-20 Series of Containers and the BOH FPU® Module Adapter Plate for TRICON I/II Containers



**Bulk Module #2**

**NSN:** 8145-01-588-3690  
**P/N:** 15410202  
(Green or Tan)

**Key Features:**

- Dimensions: 72"W x 43"D x 74"H
- Tare Weight: 833 lbs.
- 2 extendable trays to assist with securing multiple medium sized items.
- Integrated with BOH's FPU Module Quick Release/ Lock Down system.
- Compatible with FPU-8 and FPU-20 Series of Containers and the BOH FPU® Module Adapter Plate for TRICON I/II Containers



**Bulk Module #3**

**NSN:** 8145-01-588-3691

**P/N:** 15410203

(Green or Tan)

**Key Features:**

- Dimensions: 72"W x 43"D x 74"H
- Tare Weight: 1342 lbs.
- 3 extendable battery shelf bins with 8" high sides to assist with securing multiple medium sized items.
- The bins are coated with a special petroleum and acid resistant compound that provides secondary containment and prevents metal to metal contact when storing hazardous materials.
- Compatible with FPU-8 and FPU-20 Series of Containers and the BOH FPU® Module Adapter Plate for TRICON I/II Containers



**Bulk Module #4**

**NSN:** 8145-01-588-3692

**P/N:** 15410202

(Green or Tan)

**Key Features:**

- Dimensions: 72"W x 43"D x 74"H
- Tare Weight: 1021 lbs.
- 2 extendable battery shelf bins with 8" high sides to assist with securing multiple medium sized items.
- The bins are coated with a special petroleum and acid resistant compound that provides secondary containment and prevents metal to metal contact when storing hazardous materials.
- Compatible with FPU-8 and FPU-20 Series of Containers and the BOH FPU® Module Adapter Plate for TRICON I/II Containers



## Single Floor Plate

**NSN:** 8145-01-473-3026

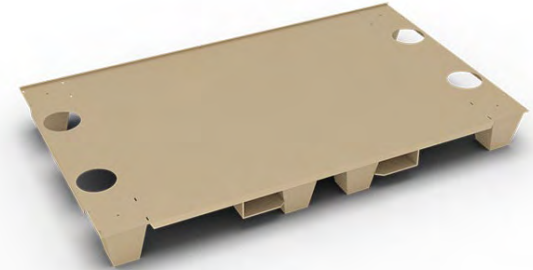
**P/N:** 15530101

(Green or Tan)

### Key Features:

- Dimensions: 35"W x 43"D x 9"H
- Tare Weight: 225 lbs.
- Compatible with FPU-8 and FPU-20 Series of Containers and the BOH FPU® Module Adapter Plate for TRICON I/II Containers

The Single Floor Plate takes up one module position and is interchangeable between the FPU-8 and FPU-20 series containers. The Single Floor Plate allow for storage and shipment of bulk commodities that do not fit in any of our shipping / storage modules and racks.



## Double Floor Plate

**NSN:** 8145-01-473-3032

**P/N:** 15530102

(Green or Tan)

### Key Features:

- Dimensions: 72"W x 43"D x 9"H
- Tare Weight: 440 lbs.
- Compatible with FPU-8 and FPU-20 Series of Containers and the BOH FPU® Module Adapter Plate for TRICON I/II Containers

The Double Floor Plate takes up two module positions and is interchangeable between the FPU-8 and FPU-20 series containers. The Double Floor Plate allow for storage and shipment of bulk commodities that do not fit in any of our shipping / storage modules and racks.

# FPU® PORTABLE DRAWER MODULES



BOH's FPU® Portable Drawer Module (PDM) is designed to store and ship class I, II, III(P), IV, VII, VIII, IX and MTOE. The PDM can also be utilized on the move within our FPU® containers as well as for warehouse modernization.

The PDM is made entirely out of steel and is available in 4 configurations. The PDM consists of skeletal cases of various sizes, a pallet base, drawer trays that slide, and drawer divider sets for small to large material storage configurations. The PDM cases nest on top of one another and are fixed to the PDM Base Plate with ratchet straps. The ratchet straps can be removed and the PDM cases can be assembled by hand into any configuration that best suits your mission.

The PDM drawers can be completely removed from the PDM case allowing you to take only the material you need. The PDM drawers come with a standard set of drawer dividers and an attached water-resistant lid to protect your material while in the field.



## PRODUCT OVERVIEW

- Dimensions: 35" Length, 43" Width, 74" Height
- Tare Weight: 1030 lb. – 1425 lb.
- 4 Portable Drawer Module Configurations
- Drawers can be completely removed from the Module
- The PDM can be reconfigured in the field to adapt to any mission
- BOH's FPU Module Quick Release/Lock Down System Integrated into each Bulk Module
- Compatible with FPU-8 and FPU-20 Series of Containers and the BOH FPU® Module Adapter Plate for TRICON I/II and QUADCON Containers







## Portable Drawer Module (PDM) #1

**NSN:** 8145-01-588-3672

**P/N:** 15003201

(Green or Tan)

### Key Features:

- Dimensions: 35"W x 43"D x 68"H
- Tare Weight: 1038 lbs.
- 30 Standard compartments

Provides storage for small, medium and large parts. Consists of a PDM Base Plate with Straps and 4ea PDM Cases with Drawers.



## Portable Drawer Module (PDM) #2

**NSN:** 8145-01-588-3677

**P/N:** 15003202

(Green or Tan)

### Key Features:

- Dimensions: 35"L x 43"D x 70"H
- Tare Weight: 1421 lbs.
- 220 Standard compartments

Provides storage for small, medium and large parts. Consists of a PDM Base Plate with Straps and 7ea PDM Cases with Drawers.



## Portable Drawer Module (PDM) #3

**NSN:** 8145-01-588-3678

**P/N:** 15003203

(Green or Tan)

### Key Features:

- Dimensions: 35"W x 43"D x 70"H
- Tare Weight: 1171 lbs.
- 92 Standard compartments

Provides storage for small, medium and large parts. Consists of a PDM Base Plate with Straps and 5ea PDM Cases with Drawers.



## Portable Drawer Module (PDM) #4

**NSN:** 8145-01-588-3688

**P/N:** 15003204

(Green or Tan)

### Key Features:

- Dimensions: 35"W x 43"D x 69"H
- Tare Weight: 1240 lbs.
- 116 Standard compartments

Provides storage for small, medium and large parts. Consists of a PDM Base Plate with Straps and 6ea PDM Cases with Drawers.

# SPECIALIZED FPU® STORAGE MODULES



## Short/ Helo Module

**NSN:** 8145-01-502-0591

**P/N:** 15700201

(Green or Tan)

### Key Features:

- Dimensions: 35"W x 43"D x 74"H
- Tare Weight: 1080 lb.
- Removable top cage
- 1 qty 4" drawer, 3 qty 6" drawer and 1 qty 8" drawer
- Integrated with BOH's FPU Module Quick Release/Lock Down.
- Compatible with FPU-8 and FPU-20 Series of Containers and the BOH FPU® Module Adapter Plate for TRICON I/II and QUADCON Containers (without top cage)



## HazMat Module

**NSN:** 8145-01-473-1288

**P/N:** 15500101

(Green or Tan)

### Key Features:

- Dimensions: 35"W x 43"D x 74"H
- Tare Weight: 975 lb.
- Consists of an aluminum interior and the drawer slides use an Ultra High Molecular Weight material to prevent sparks
- Approved for air transport aboard USAF C-130, C-5, and C-17 aircraft
- Compatible with FPU-8 and FPU-20 Series of Containers and the BOH FPU® Module Adapter Plate for TRICON I/II Containers

# ***SPECIALIZED FPU® STORAGE MODULES***



The FPU® Weapons Module Hull is constructed with a dual wall, all-steel exterior / interior and accommodates 5 weapons or security drawers (sold separately). There are currently three different weapons drawers to select from to fill the five drawer positions. The drawers include the M16A2/M4 drawer designed to store M16A2, M16A4 and M4 weapons, the 9MM drawer is designed to store 9MM weapons and the 8-inch security drawer is designed to provide storage for sensitive or pilferable items that require additional security.

The FPU® Weapons Module Hull is an interchangeable component of the FPU® System and may be inserted into any of our FPU-8 and FPU-20 series containers using BOH's Quick Release/Lock Down System

## **Weapons Module, Hull**

**NSN:** 8145-01-502-2593  
**P/N:** 15500003  
(Green or Tan)

- Dimensions: 35"W x 43"D x 74"H
- Tare Weight: 1020 lb. (without Weapons Drawers)
- Accommodates up to 5 of BOH's weapons or security drawers
- Can stores up to 280 qty 9MM pistols or up to 35 qty M4 or M16A2 rifles
- Compatible with FPU-8 and FPU-20 Series of Containers and the BOH FPU® Module Adapter Plate for TRICON I/II Containers



**4 qty Weapons Modules Used Inside an FPU-8-2 to  
Create an Expeditionary Arms Room**

# SPECIALIZED FPU® STORAGE MODULES



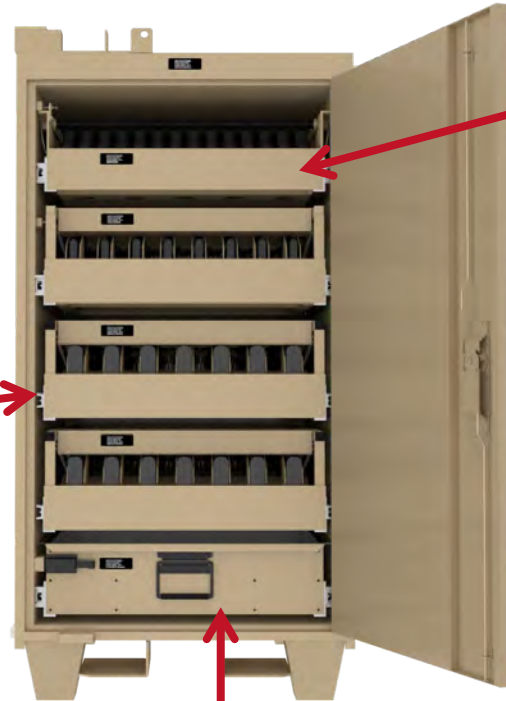
## FPU® Weapons Module Drawers



### M4 / M16 Drawer

**NSN:** 8145-01-586-8128  
**P/N:** 15500104  
(Green or Tan)

The M4 - M16A2 weapons drawer accommodates 7 rifles and has 100% extension slides for easy access and inventory. The drawers are adjustable to accommodate the M4 with Long Barrel, M4 with Short Barrel and Standard M16A2 Rifles. Drawers have a swing-down locking device to secure items during storage and transport.



### 9MM Drawer

**NSN:** 8145-01-502-2611  
**P/N:** 15500102  
(Green or Tan)

The 9MM weapons drawer accommodates 56 pistols and has 100% extension slides for easy access. Pistols are stored horizontally to maximize space and improve the issue, turn-in and inventory processes. Drawers have a swing-down locking device to secure items during storage and transport.



### 8" Security Drawer

**NSN:** 8145-01-528-2853  
**P/N:** 15520860  
(Green or Tan)

The 8" Security / weapons Drawer is available for storage of weapons accessories, like scopes, night vision goggles, repair kits and larger weapon systems like 50 Cal's and Grenade Launchers.



# FPU® MODULE ADAPTER (TRICON I / II)



## BOH Module Adapter provides proven modular FPU® System benefits into the TRICON I/II container:

- Provide CL I, II, III(P), IV, VII, VIII, IX and M&TOE move / store capability
- Material in FPU Modules stays uploaded in garrison...inside or outside the TRICON I or II container
- FPU Module inserts provide significant container footprint reduction
- Enable immediate access to stored material without unpacking/repacking
- No blocking or bracing required
- Offer scalable mission configuration using 6 BOH Module Kit options

## Installs in Government-owned TRICON I/II Containers in minutes...



Government-owned TRICON I/II



Easy 2-person Installation (15-minute task)



Use only hand tools to install. No drilling, welding, blocking or bracing



Quick release / lock-down system



Accommodates all standard, specialty & bulk FPU® Modules



## BOH FPU Module Adapter (TRICON I / II)

**NSN:** 8145-01-606-1142  
**P/N:** 15530128-001  
(Green)

**NSN:** 8145-01-606-0505  
**P/N:** 15530128-002  
(Tan)

**BOH Module Adapter (TRICON I / II) Plates are sold as one each. Two BOH Module Adapter (TRICON I / II) Plates are required to secure FPU Modules into TRICON I/II Containers**

- Dimensions: 42" Length, 36" Width, 8" Height
- Tare Weight: 140 lbs.
- Easy two-person installation (15-minute task)
- Installation requires no drilling, welding, blocking or bracing
- Installation requires no MHE
- Installed using only a 3/4" socket with ratchet and a 3/4" wrench
- Designed to secure FPU modules under mobile conditions
- Designed with BOH's FPU Module Quick Release/Lock Down System
- Accommodates all FPU standard and specialized modules

## BOH Module Kits provide proven modular FPU® System benefits into the QUADCON container:

- BOH QUADCON Modules provide storage for small, medium and large material and are offered in five standard drawer configurations.
- The QUADCON Module has 127 to 321 standard compartments and is expandable to 230 to 632 compartments depending on configuration (Supplemental divider kits are required for expandability).
- The QUADCON Modules has top storage equipped with D-rings.
- BOH's QUADCON Multi-Use Adapter Plate allows for integration of BOH's module locking system into QUADCON containers without drilling, cutting or welding.
- For QUADCON containers not equipped with tie-down provisions BOH's QUADCON Adapter Restraint System can be used to secure BOH's QUADCON Module.



Government-owned  
QUADCON Container



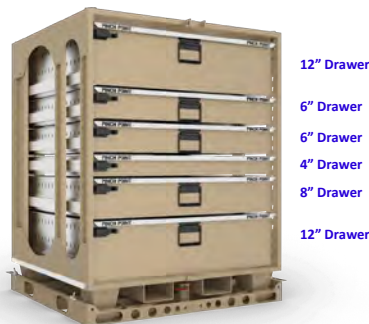
BOH Module Multi-use Adapter Plate for  
QUADCON



BOH QUADCON Modules



BOH QUADCON Module Secured in  
Government-owned QUADCON with  
BOH Adapter



## QUADCON Module Kit #1

**NSN:** 8145-01-606-2789  
**P/N:** 30000020G  
(Green)

**NSN:** 8145-01-606-2784  
**P/N:** 30000020T  
(Tan)

### Key Features:

- Dimensions: 50"W x 44"D x 62"H
- Tare Weight: 1,703 lb.
- Kit is designed for government-owned QUADCON containers with tie-down provisions that do not have a roll-up door.
- Easy two-person installation (15-minute task), requires no drilling, welding, blocking or bracing
- 6 Drawers (12", 6", 6", 4", 8", 12") with standard divider sets
- 244 standard storage compartments, expandable to 480 compartments with additional divider sets
- High security 3-G locking bar that accommodates 5200 and 5300 series locks
- Integrated with BOH's quick connect / discount twist-locking system



## QUADCON Module Kit #2

**NSN:** 8145-01-606-2779  
**P/N:** 30000021G  
(Green)

**NSN:** 8145-01-606-2678  
**P/N:** 30000021T  
(Tan)

### Key Features:

- Dimensions: 50"W x 44"D x 62"H
- Tare Weight: 1,622 lb.
- Kit is designed for government-owned QUADCON containers with tie-down provisions that do not have a roll-up door.
- Easy two-person installation (15-minute task), requires no drilling, welding, blocking or bracing
- 7 Drawers (8", 8", 6", 4", 6", 8", 8") with standard divider sets
- 274 standard storage compartments, expandable to 516 compartments with additional divider sets
- High security 3-G locking bar that accommodates 5200 and 5300 series locks
- Integrated with BOH's quick connect / discount twist-locking system



8" Drawer  
8" Drawer  
6" Drawer  
6" Drawer  
4" Drawer  
8" Drawer  
10" Drawer

## QUADCON Module Kit #3

**NSN:** 8145-01-606-2698  
**P/N:** 30000022G  
(Green)

**NSN:** 8145-01-606-2830  
**P/N:** 30000022T  
(Tan)

### Key Features:

- Dimensions: 50"W x 44"D x 62"H
- Tare Weight: 1,846 lb.
- Kit is designed for government-owned QUADCON containers with tie-down provisions that do not have a roll-up door.
- 7 Drawers (8", 8", 6", 6", 4", 8", 10") with standard divider sets
- 328 standard storage compartments, expandable to 632 compartments with additional divider sets
- Easy two-person installation (15 minute task), requires no drilling, welding, blocking or bracing
- High security 3-G locking bar that accommodates 5200 and 5300 series locks
- Integrated with BOH's quick connect / discount twist-locking system



10" Drawer  
6" Drawer  
4" Drawer  
4" Drawer  
4" Drawer  
8" Drawer  
12" Drawer

## QUADCON Module Kit #4

**NSN:** 8145-01-606-2524  
**P/N:** 30000023G  
(Green)

**NSN:** 8145-01-606-2573  
**P/N:** 30000023T  
(Tan)

### Key Features:

- Dimensions: 50"W x 44"D x 62"H
- Tare Weight: 1,827 lb.
- Kit is designed for government-owned QUADCON containers with tie-down provisions that do not have a roll-up door.
- 7 Drawers (10", 6", 4", 4", 4", 8", 12") with standard divider sets
- 321 standard storage compartments, expandable to 626 compartments with additional divider sets
- Easy two-person installation (15-minute task), requires no drilling, welding, blocking or bracing
- High security 3-G locking bar that accommodates 5200 and 5300 series locks
- Integrated with BOH's quick connect / discount twist-locking system





## QUADCON Module Kit #5

**NSN:** 8145-01-606-2833  
**P/N:** 30000024G  
(Green)

**NSN:** 8145-01-606-2533  
**P/N:** 30000024T  
(Tan)

### Key Features:

- Dimensions: 50"W x 44"D x 62"H
- Tare Weight: 1,098 lb.
- Kit is designed for government-owned QUADCON containers with tie-down provisions that do not have a roll-up door.
- 5 Drawers (12", 10", 6", 10", 10") with standard divider sets
- 127 standard storage compartments, expandable to 230 compartments with additional divider sets
- Easy two-person installation (15-minute task), requires no drilling, welding, blocking or bracing
- High security 3-G locking bar that accommodates 5200 and 5300 series locks
- Integrated with BOH's quick connect / discount twist-locking system



## QUADCON Restraint System

**NSN:** 8145-01-606-2120  
**P/N:** 15441141T  
(Tan)

**NSN:** 8145-01-606-2125  
**P/N:** 15441141G  
(Green)

### Key Features:

- Dimensions: 53"W x 45"D x 69"H
- Tare Weight: 200 lbs.
- Designed to be installed in Government-owned QUADCON I/II containers without tie-down provisions
- Provides BOH's Quick Release/Lock Down system for BOH QUADCON Modules, Portable Drawer Modules and Short/ Helo Modules (without top cage).
- This system is installed without the requirement to drill or weld by utilizing the QUADCON's primary wall, ceiling, floor structures and a series of pressure plates. It consists of side frames, top beams and pusher plate mechanisms.

**FOR QUADCON CONTAINERS WITHOUT  
TIE-DOWN PROVISIONS**

# ***LIGHT EXPEDITIONARY MODULES (LEM)***

The BOH LEM can deliver proven value to any organization that must deploy and operate in remote locations or within disaster relief/recovery sites.

LEM consists of light-weight steel structure and all-aluminum drawers / drawer dividers. LEM comes in two standard heights of 36" and 70". The 36" consists of 2 sections and the 70" consists of 4 sections to facilitate assembly / disassembly by two people.

The LEM can store and move a wide variety of material to include Spare /repair parts; tools; medical supplies and provisions; and special tools/equipment for first responders.

Every component of the LEM is designed for optimum efficiency and safety in the field, the warehouse or in between.



**70" Light Expeditionary Module (LEM)**



**36" Light Expeditionary Module (LEM)**

## **PRODUCT OVERVIEW**

- 36" LEM configurations (35"W x 29"D x 36"H). Each LEM 36" Configuration comes with a 30" Hull and Lock-down Base
- 70" LEM configurations (35"W x 29"D x 70"H). Each LEM 70" Configuration comes with a Top Cage, 30" and 18" Hull and Lock-down Base
- Maximum payload capacity of each drawer is 100 lbs.
- Removable without need for tools
- Weather resistant
- Accommodate adjustable drawer dividers
- Come with removable lids
- Portable drawers and drawer dividers are made from aluminum.
- LEM can be moved by 2-wheel hand truck, pallet jack, forklift or be broken down and moved by hand.
- The LEM's 1-position, 2-position and 3-position mounting plates allow it to be installed in multiple platforms such as ISO containers, MIL-VANS, and M129 Vans.



**Light Expeditionary Module (LEM) Man Portable**



**Light Expeditionary Module (LEM) Moved by Pallet Jack**

# ***LIGHT EXPEDITIONARY MODULES (LEM)***



## **LEM 36" Configuration #1**

**NSN:** 8145-01-611-3931  
**P/N:** 17100001-003  
(Gray)

### **Key Features:**

- Dimensions: 35"W x 29"D x 36"H
- Tare Weight: 400 lb.
- 3 removable / portable aluminum drawers
- 49 Standard compartments
- Forklift base plate (not pictured) used to secure LEM to LEM Mounting plate (sold separately) using BOH's twist-locking system.



## **LEM 36" Configuration #5**

**NSN:** 8145-01-611-3928  
**P/N:** 17100005-003  
(Gray)

### **Key Features:**

- Dimensions: 35"W x 29"D x 36"H
- Tare Weight: 348 lb.
- 2 removable / portable aluminum drawers
- 18 Standard compartments
- Forklift base plate (not pictured) used to secure LEM to LEM Mounting plate (sold separately) using BOH's twist-locking system.

# ***LIGHT EXPEDITIONARY MODULES (LEM)***



**LEM 70" Configuration #2**

**NSN:** 8145-01-611-3863  
**P/N:** 17000002-003  
(Gray)

## **Key Features:**

- Dimensions: 35"W x 29"D x 70"H
- Tare Weight: 643 lb.
- 4 removable / portable aluminum drawers and 1 removable top cage
- 68 Standard compartments
- Forklift base plate (not pictured) used to secure LEM to LEM Mounting plate (sold separately) using BOH's twist-locking system.



**LEM 70" Configuration #4**

**NSN:** 8145-01-611-3861  
**P/N:** 17000004-003  
(Gray)

## **Key Features:**

- Dimensions: 35"W x 29"D x 70"H
- Tare Weight: 643 lb.
- 4 removable / portable aluminum drawers and 1 removable top cage
- 55 Standard compartments
- Forklift base plate (not pictured) used to secure LEM to LEM Mounting plate (sold separately) using BOH's twist-locking system.

# ***LIGHT EXPEDITIONARY MODULES (LEM)***



**LEM 70" Configuration #5**

NSN: 8145-01-611-3857  
P/N: 17000005-003  
(Gray)

## **Key Features:**

- Dimensions: 35"W x 29"D x 70"H
- Tare Weight: 594 lb.
- 3 removable / portable aluminum drawers and 1 removable top cage
- 27 Standard compartments
- Forklift base plate (not pictured) used to secure LEM to LEM Mounting plate (sold separately) using BOH's twist-locking system.



**LEM 70" Configuration #6**

NSN: 8145-01-611-3854  
P/N: 1700006-003  
(Gray)

## **Key Features:**

- Dimensions: 35"W x 29"D x 70"H
- Tare Weight: 700 lb.
- 5 removable / portable aluminum drawers and 1 removable top cage
- 99 Standard compartments
- Forklift base plate (not pictured) used to secure LEM to LEM Mounting plate (sold separately) using BOH's twist-locking system.



# ***LIGHT EXPEDITIONARY MODULES (LEM)***



**LEM 70" Configuration #7**

NSN: 8145-01-611-3849  
P/N: 17000007-003  
(Gray)

## **Key Features:**

- Dimensions: 35"W x 29"D x 70"H
- Tare Weight: 694 lb.
- 5 removable / portable aluminum drawers and 1 removable top cage
- 109 Standard compartments
- Forklift base plate (not pictured) used to secure LEM to LEM Mounting plate (sold separately) using BOH's twist-locking system.



**LEM 70" Configuration #8**

NSN: 8145-01-611-3843  
P/N: 17000008-003  
(Gray)

## **Key Features:**

- Dimensions: 35"W x 29"D x 70"H
- Tare Weight: 699 lb.
- 5 removable / portable aluminum drawers and 1 removable top cage
- 109 Standard compartments
- Forklift base plate (not pictured) used to secure LEM to LEM Mounting plate (sold separately) using BOH's twist-locking system.

# ***LIGHT EXPEDITIONARY MODULES (LEM)***



**LEM 70" Configuration #9**

**NSN:** 8145-01-611-3832  
**P/N:** 17000009-003  
(Gray)

## **Key Features:**

- Dimensions: 35"W x 29"D x 70"H
- Tare Weight: 699 lb.
- 5 removable / portable aluminum drawers and 1 removable top cage
- 96 Standard compartments
- Forklift base plate (not pictured) used to secure LEM to LEM Mounting plate (sold separately) using BOH's twist-locking system.



**LEM 70" Configuration #10**

**NSN:** 8145-01-611-3926  
**P/N:** 1700010-003  
(Gray)

## **Key Features:**

- Dimensions: 35"W x 29"D x 70"H
- Tare Weight: 648 lb.
- 5 removable / portable aluminum drawers and 1 removable top cage
- 58 Standard compartments
- Forklift base plate (not pictured) used to secure LEM to LEM Mounting plate (sold separately) using BOH's twist-locking system.

# ***LIGHT EXPEDITIONARY MODULES (LEM)***



**LEM 70" Configuration #11**

**NSN:** 8145-01-611-3872  
**P/N:** 17000011-003  
(Gray)

**Key Features:**

- Dimensions: 35"W x 29"D x 70"H
- Tare Weight: 700 lb.
- 5 removable / portable aluminum drawers and 1 removable top cage
- 86 Standard compartments
- Forklift base plate (not pictured) used to secure LEM to LEM Mounting plate (sold separately) using BOH's twist-locking system.



**LEM 70" Configuration #12**

**NSN:** 8145-01-611-3867  
**P/N:** 1700012-003  
(Gray)

**Key Features:**

- Dimensions: 35"W x 29"D x 70"H
- Tare Weight: 697 lb.
- 5 removable / portable aluminum drawers and 1 removable top cage
- 96 Standard compartments
- Forklift base plate (not pictured) used to secure LEM to LEM Mounting plate (sold separately) using BOH's twist-locking system.

# ***LIGHT EXPEDITIONARY MODULES (LEM)***

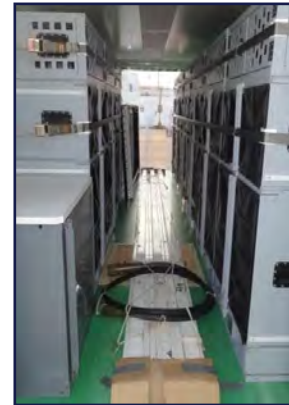
## **Light Expeditionary Modules (LEM) Mounting Plates allow LEMs to be secured into Government-owned containers.**

The BOH LEM features our twist-lock technology that work in conjunction with the LEM Mounting Plates. The LEM Mounting Plates can be permanently installed inside MILVANS, M-129 Vans & ISO containers and on-board military ships to provide a deployable warehouse operation.

The LEM Mounting Plates consists of an all-steel plate with female receiver that accepts the male twist lock located on the LEM base. The twist lock secures the cabinet base and can be connected / disconnected without the use of tools. Mounting plate must be installed by the user on the container that will house the LEM Cabinets.



**LEM Base Plate being lifted on to LEM Mounting Plate**



**LEMs Secured on Mounting Plates in MILVANS**



**Light Expeditionary Module (LEM)  
1-Position Mounting Plate**

**NSN:** 8145-01-611-3941  
**P/N:** 17000500-003

**Dimensions:** 38"W x 29"D x 3"H

**Description:** Secures one LEM and is Gray in color.



**Light Expeditionary Module (LEM)  
2-Position Mounting Plate**

**NSN:** 8145-01-611-3939  
**P/N:** 17000501-003

**Dimensions:** 71"W x 29"D x 3"H

**Description:** Secures two LEMs and is Gray in color.



**Light Expeditionary Module (LEM)  
3-Position Mounting Plate**

**NSN:** 8145-01-611-3936  
**P/N:** 17000502-003

**Dimensions:** 106.5"W x 29"D x 3"H

**Description:** Secures three LEMs and is Gray in color.

# MULTI-PLATFORM MODULE (MPM™)

The Multi-Platform Module (MPM™) combines high strength steel and aluminum alloy materials to provide an industry leading lightweight, tailorable, corrosion resistant solution.

The MPM™ is an agile system of drawers and cases designed to easily meet all mission scenarios. End user configuration of the stack yields an efficiently tailored solution that meets specific operational requirements while minimizing excess equipment.

It easily integrates within the common core set of existing Government-owned containers (JMIC, QUADCON and 463L Container) while enhancing the overall container storage capacity.

The MPM™ cases and drawers come in a variety of heights and can be paired together to form an MPM™ stack, up to 75" high.

## Enhance the Storage Capacity of Government-Owned Containers



**JMIC Containers**



**QUADCON Containers**



**463L Containers**

### Product Features:

- Durable, Lightweight, Hand Portable
- Modular - 4", 6", 8", 10", 12", 16" Case and Drawer assemblies
- Scalable assemblies are user added or removed for mission requirements
- Field integrated w/in Government-owned JMIC, QUADCON and 463L Containers
- Drawer dividers and hood for bulk materials
- Store and ship all classes (except class V) of supplies and MTOE



# MULTI-PLATFORM MODULE (MPM™)



## 4" MPM Case & Drawer

P/N: BH00018-M6

Dim: 39"W x 39"L x 8"H

Weight: 101 lb.

36 Compartments

## 6" MPM Case & Drawer

P/N: BH00018-M5

Dim: 39"W x 39"L x 10"H

Weight: 111 lb.

36 Compartments

## 8" MPM Case & Drawer

P/N: BH00018-M4

Dim: 39"W x 39"L x 12"H

Weight: 118 lb.

16 Compartments

## 10" MPM Case & Drawer

P/N: BH00018-M3

Dim: 39"W x 39"L x 14"H

Weight: 130 lb.

16 Compartments

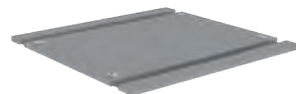
## 12" MPM Case & Drawer

P/N: BH00018-M2

Dim: 39"W x 39"L x 16"H

Weight: 135 lb.

9 Compartments



## 12" Bulk MPM Case & Drawer

P/N: BH00018-M8

Dim: 39"W x 39"L x 16"H

Weight: 105 lb.

1 Bulk Compartment w/ Net

## 16" MPM Case & Drawer

P/N: BH00018-M1

Dim: 39"W x 39"L x 120"H

Weight: 152 lb.

9 Compartments

## 16" Bulk MPM Case & Drawer

P/N: BH00018-M7

Dim: 39"W x 39"L x 20"H

Weight: 114 lb.

1 Bulk Compartment w/ Net

## MPM Base Plate w/ Straps

P/N: BH00018-F7

Dim: 41.5"W x 40"L x 8"H

Weight: 125 lb.

2 Ratchet Straps

## MPM Hood (Bulk Top Load)

P/N: BH00018-F6

Dim: 39"W x 39"L x 1"H

Weight: 13 lb.

4 Mounted D-rings

## Expeditionary Joint Operations Center (EJOC®)

**P/N:** 15002007  
(Green or Tan)

**Dimensions:** 8'H x 8'W x 20'L  
**Tare Weight:** 11,880 lbs.



BOH's EJOC System is a bail bar-equipped, rapidly deployable, tactical operations center tailorable for multiple mission operations and needs. The EJOC allows for simple and easy integration of communications, computing and networking equipment. The MIL-STD 810H system is readily available to support a variety of mission set applications such as Global Combat Support System (GCSS), Command and Control (C2), Tactical Operations Center (TOC), and Maintenance.

Built inside of an ISO and CSC certified container platform (8'x8'x20'), it is approved for 9-high stacking, primary load aboard vessels and strategic airlift. The all-steel design and ruggedized interior can support operations in any environment. The integrated bail-bar provides grab-and-go capability with the HEMTT-LHS and PLS without the need for a flatrack.



### Features:

- MIL-STD 810H tested
- ISO and CSC certified by American Bureau of Shipping
- 4 Workstations with Continuous Desktop and CAT V connectivity
- Retractable 22,000 BTU HVAC for additional protection during system transit
- NEC 2020 Compliant integrated electrical power
- 12 available 120V outlets (GFCI-Protected) for accessories
- All-Steel construction with Ruggedized Filing Cabinets
- 16 roof tie-down points
- Non-Slip Flooring throughout Container
- LED Lighting, Red/ White
- Rifle Storage Compartments and heavy-duty hooks for hanging combat gear
- Bail bar-equipped; Fully Compatible with the HEMTT-LHS, PLS (with or w/out ECHU) & M-1076 PLS Trailer (PLST)
- Accepts 60 Hz, 120/208v, 3-phase power



## Expandable Wall Command Center (EWCC)

NSN: 8145-01-502-3927

P/N: EWCC208

(Green or Tan)

Dimensions: 8'H x 8'W x 20'L

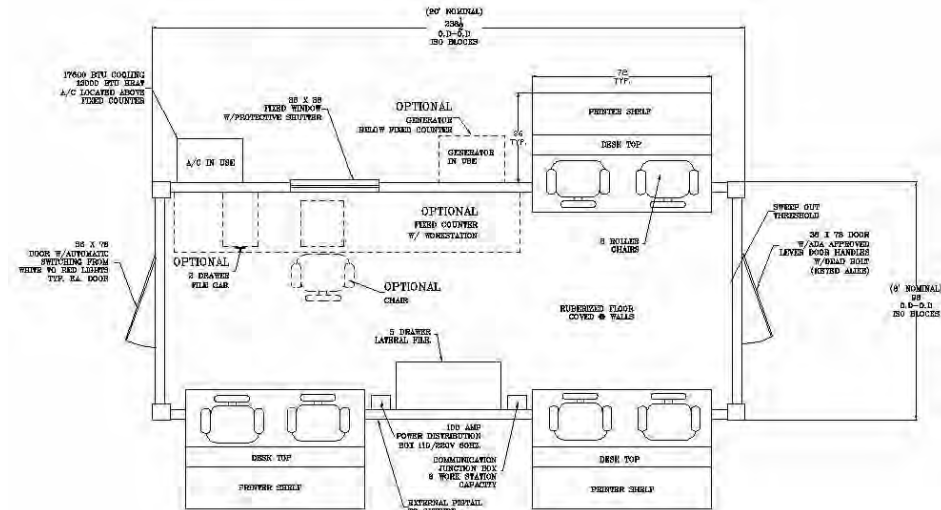
Tare Weight: 11,880 lbs.

Note: The Expandable Wall Command Center (EWCC) is NOT an ISO-certified or CSC Safety-approved container and should not be stacked.

The BOH Expandable Wall Command Center is an all-steel container that has three two-position slide out workstations. Designed for use as a self-contained disaster response, expeditionary command or logistics support facility. This very rugged unit has coved walls and sweep out thresholds for ease cleaning during inclement weather. It has two end-located doors and a single fixed observation window equipped with a protective shutter. 220v 60Hz power distribution box is also included.

### Features:

- Frame constructed of tubular steel with ISO corner blocks
- May be sling-loaded
- Two entry/exit doors
- Retractable HVAC (220v60hz)
- 120v Fluorescent lighting
- Expandable sides (3 push-out 2-person workstations)
- Six desk/computer workstations with five drawer file cabinet (lockable)
- Exit doors equipped with automatic switch to switch from white light to red light when door is opened
- Phone & CAT 5 connection at each workstation
- Interior walls and ceiling constructed of FRP
- Insulated to R19
- Sprayed on rubberized floor for easy cleaning and long durability
- GFCI receptacles
- Shore power connection for generators
- Unit complies with National Electrical Code 2020



## Containerized Command Center (CCC)

**NSN: 8145-01-502-3930**

**P/N: CCC208**  
(Green or Tan)

**Dimensions:** 8'H x 8'W x 20'L  
**Tare Weight:** 8,770 lbs.

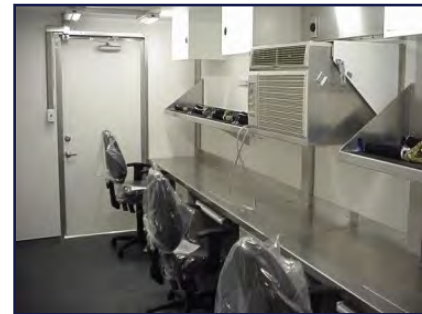
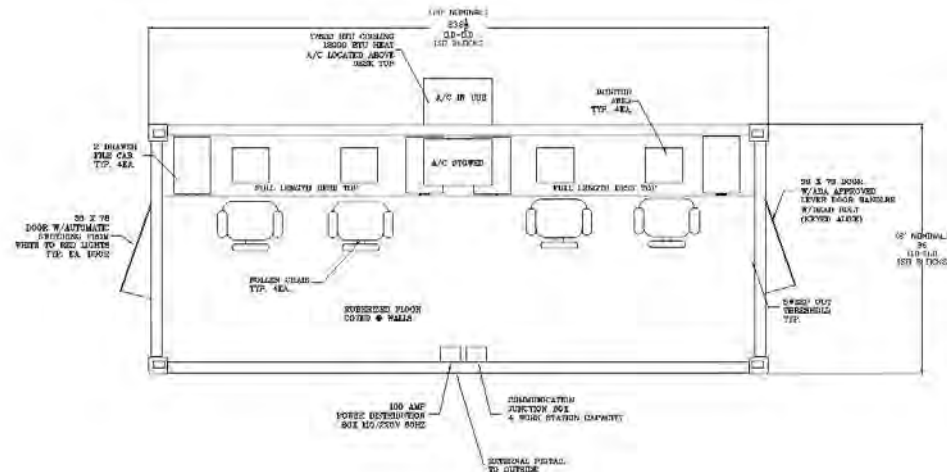
**Note: The Containerized Command Center (CCC) is NOT an ISO-certified or CSC Safety-approved container and should not be stacked.**



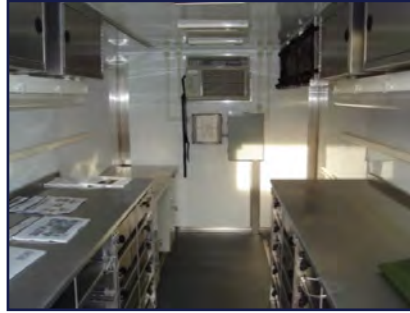
The BOH Containerized Command Center is an all-steel container designed for use as a self-contained disaster response, expeditionary command or logistics support facility supporting four computer stations. This very rugged unit has coved walls and sweep out thresholds for ease of cleaning during inclement weather. It has two end located doors and a 220v 60Hz power distribution box.

### Features:

- Can be sling-loaded
- Two entry/exit doors
- Retractable HVAC (220v 60Hz)
- 120v fluorescent lighting package
- Exit doors equipped with automatic switch to switch from white light to red light when door is opened (includes on/off switch to engage/disengage)
- Four desk/computer workstations
- Phone connections at each workstation
- CAT 5 line at each workstation
- Interior walls and ceiling constructed of FRP
- Insulated to R19
- GFCI receptacles
- Shore power connection for generators
- Unit complies with National Electrical Code 2020







## Modular Workshop Container (MWC)

**NSN:** 8145-01-524-4030

**P/N:** 15002028

(Green or Tan)

The BOH Modular Workshop Container (MWC) is a fully self-contained modular system. Featured uses include:

- Workshop
- Bench Stock Storage Room
- Receiving & Issue Center
- Maintenance Facility
- Office and Command & Control Center

MWC offers a variety of modular storage aids and operational components that bolt to the floor using the container's "Unistrut" track system. Modular aids that secure to and move within this track system include:

- Parts Storage Cabinet Modules (w/full-extension drawers, drawer dividers, and drawer securing devices)
- Extractable Shelf Storage Cabinet Modules
- Desk (w/ drawers)

The MWC is a 12'L x 8'W x 8'H container with a tare weight of 3,300 lbs. allowing it to be able to fit on the bed of the M1078 Truck without interfering with pulling other equipment using the truck's pintle hook. MWC features 8 tie-down rings that enable it to be secured to M1078 cargo bed or sling-lifted. Other MWC features include folding steps on rear exterior end wall, switchable white/red interior lighting, dome lights and 4 each 110v work lights inside; 208v / Single-phase / 60-amp distribution panel, HVAC unit, power strip w/ AC connectors, fork pockets; and sprayed-on rubberized floor. Aluminum wall construction enables the MWC to deliver a payload of 1,700 lbs.; GW capacity is 5,000 lbs. **Note: The Containerized Command Center (CCC) is NOT an ISO-certified or CSC Safety-approved container and should not be stacked.**



Every mission requires a unique storage solution. BOH's inherent modular storage system can fit any requirement for missions of all size, material, and mobility needs. Our expert logisticians will tailor a solution for your needs. BOH's Veteran-based team has over 300 years of collective military service and understand the value in having the right equipment for the mission. BOH has created thousands of custom solutions for vehicle and aviation maintenance, common core ASL, weapons, construction, water and fuel systems, medical and disaster response.

One of the great benefits of BOH modular systems is the interoperability of the products. Looking for custom configurations? Let a BOH logistician provide you with a no-cost, no obligation survey. The survey includes the following to develop a proposed solution tailored to your mission requirements:

- Examining container and storage requirements
- Addressing the overall goal of the mission
- Defining the deployment concept and assets



Survey of Customer Material



BOH Customer Service Manager  
Supporting Product Integration



Material Loaded, Organized, Accessible  
and Ready to Move in BOH Systems

# HOW TO PURCHASE BOH PRODUCTS



## How to purchase BOH Solutions Products

1. Submit a Military Interdepartmental Purchase Request (MIPR) for your requirements and the Finance Division at DLA will accept the money. You need to send a list of your actual requirements (list of items on the Requirement Estimate) and DLA will use the money from the MIPR to finance the Delivery Orders.
2. Submit funded requisitions through the normal FEDLOG supply system for your requirements and DLA will issue Delivery Orders.
3. Direct contract with BOH Solutions.

**For help with DLA Purchases please  
contact DLA's Customer Account  
Specialists at (877) 352-2255**

**For urgent requirements please contact  
BOH at (985) 674-0725 to connect with  
your local Customer Service Manager**

## How to Procure AIDPMO Asset Tracking Numbers for BOH Containers

Your unit must appoint a Container Control Officer (CCO). This CCO must obtain access to Joint Container Management (JCM).

Request ISO serial numbers from SDDC/Army Intermodal Distribution and Platform Management Office (AIDPMO) when purchasing new containers, tactical shelters, and other ISO-configured equipment; when re-stenciling containers that are commercially marked but owned by the DoD; or when re-stenciling because of changes in ownership between services. (1) To request numbers for new containers or to register existing numbers, contact AIDPMO. AIDPMO can be contacted by phone at 618-220-6833 or DSN 770-6833, or via e-mail at [usarmy.scott.sddc.mbx.g3-aidpmo-inventory@army.mil](mailto:usarmy.scott.sddc.mbx.g3-aidpmo-inventory@army.mil). (2) Information required when requesting numbers includes the requisition, contract or delivery order number covering the containers, ISO asset type, National Stock Number, quantity, accountable owner Department of Defense Activity Address Code (DoDAAC), DoDAAC of the location where the new containers will be delivered or used containers are currently, and the end delivery date of the containers.

**[Usarmy.scott.sddc.mbx.g6-jcm-helpdesk@army.mil](mailto:Usarmy.scott.sddc.mbx.g6-jcm-helpdesk@army.mil)**

**Contract or Requisition #**

**Size and Type of container**

**Quantity**

**Price**

**Owner DODAAC, Requesting DODAAC, & Delivery DODAAC**

**CCO (Container Control Officer) Need to make sure the unit has one.**

**NSN of the container**

**Delivery POC**

**Lift Capability at destination? Yes or No?**

**Certified Funds? Yes or No?**

**Condition? New or Used?**

**BOH offers free new equipment training and initial stand-up support for our customers in CONUS once the order has been delivered. Training is either done on-site or remotely and includes:**

- Best load-out to achieve **CONTAINER FOOTPRINT REDUCTION of 57%** on average... and realize **SIGNIFICANT COST SAVINGS** during operation
- How to use **BOH's** inherent **SYSTEM ADAPTABILITY** to your advantage
- How to optimize **EFFECTIVE** and **EFFICIENT USE OF FPU SYSTEM** especially in areas of **INVENTORY ACCOUNTABILITY**

**BOH Solutions Operation Manuals.** BOH provides and maintains operation manuals for all of our products which contain instructions for Set-Up, Operation, Troubleshooting, Preventive Maintenance and Repair with illustrated parts breakdown and Special Tools (when applicable). These manuals were designed and published to be similar to military technical manuals to which our customers are accustomed. The current version of each operation manual can be found on our website using the following steps;



**For Spare or Repair Part Inquiries Please Contact BOH Solutions at:**

**(985) 674-0725**  
**info@bohsolutions.com**





143 Terra Bella Blvd. Covington, LA 70433

P. (985) 674-0725

E. [info@bohsolutions.com](mailto:info@bohsolutions.com)

W. [bohsolutions.com](http://bohsolutions.com)